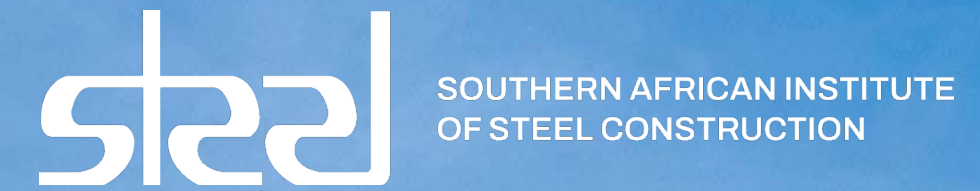


Steel Awards 2023



SVA International

NMU OSC Extensions



# THE PROJECT BRIEF

CLIENT: Nelson Mandela University

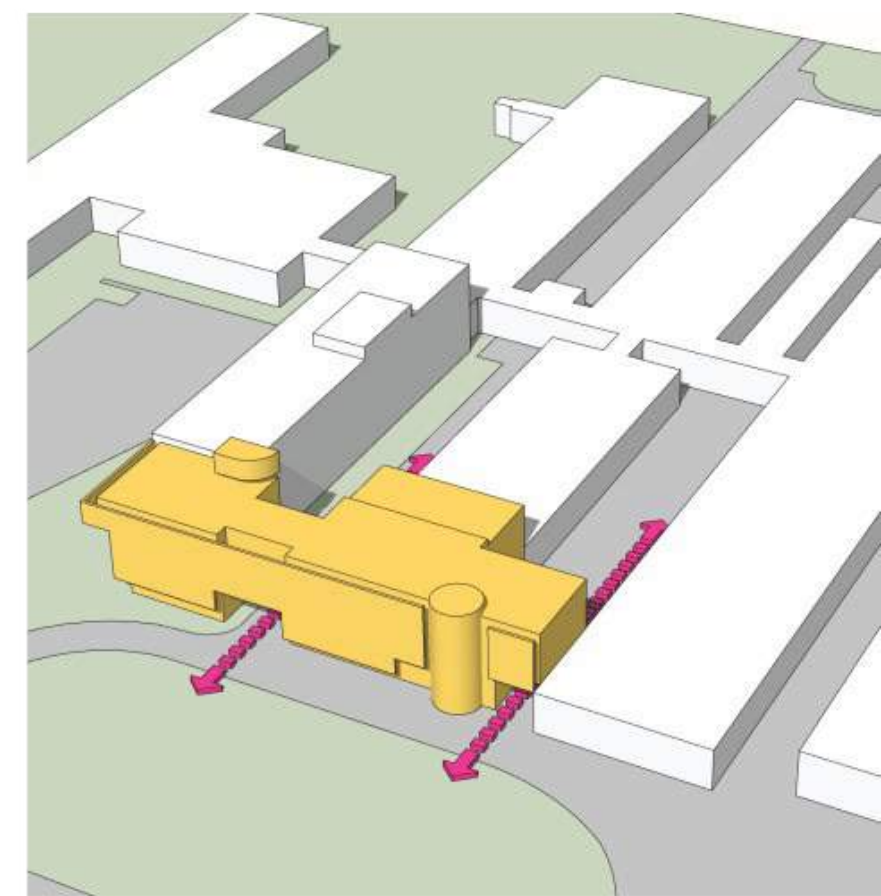
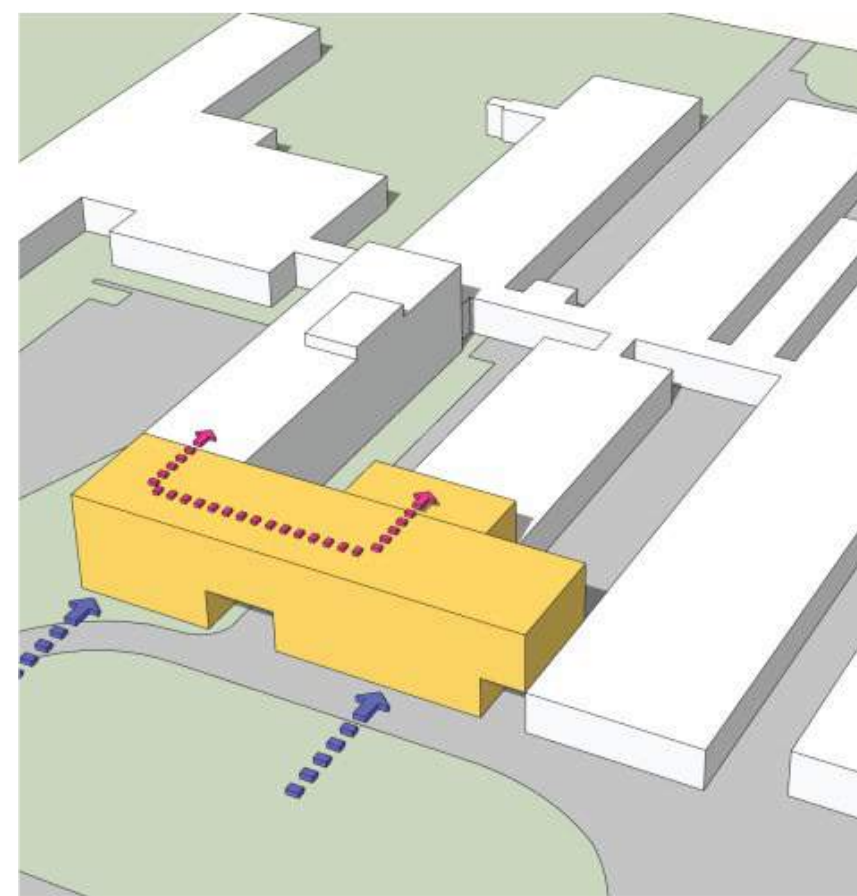
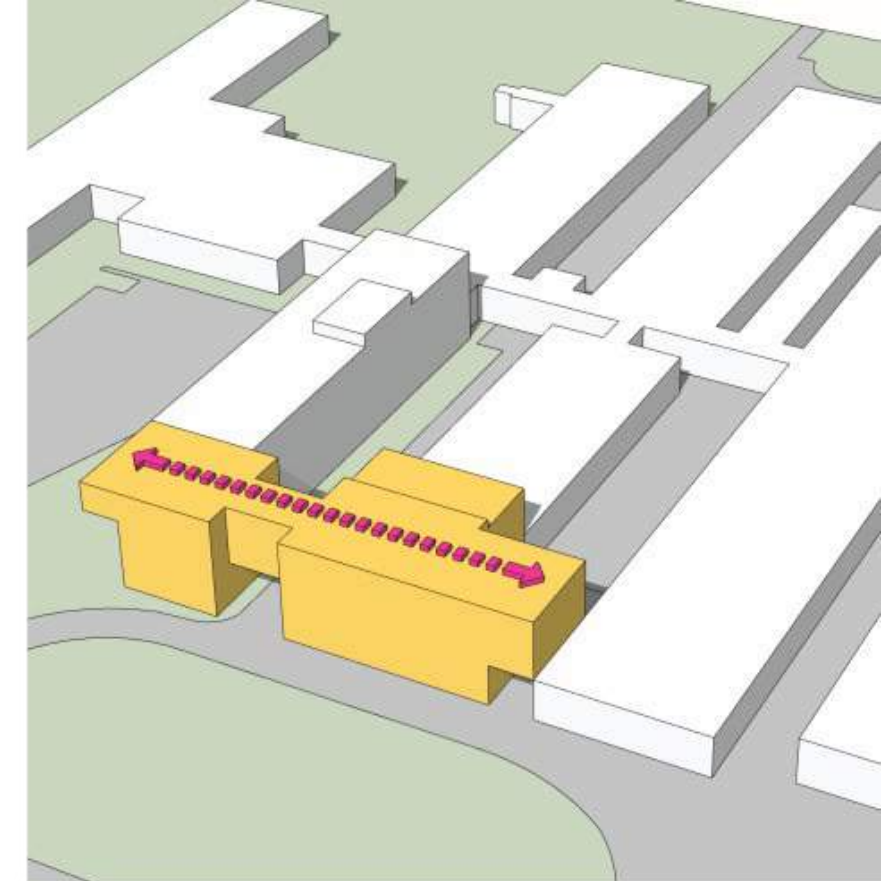
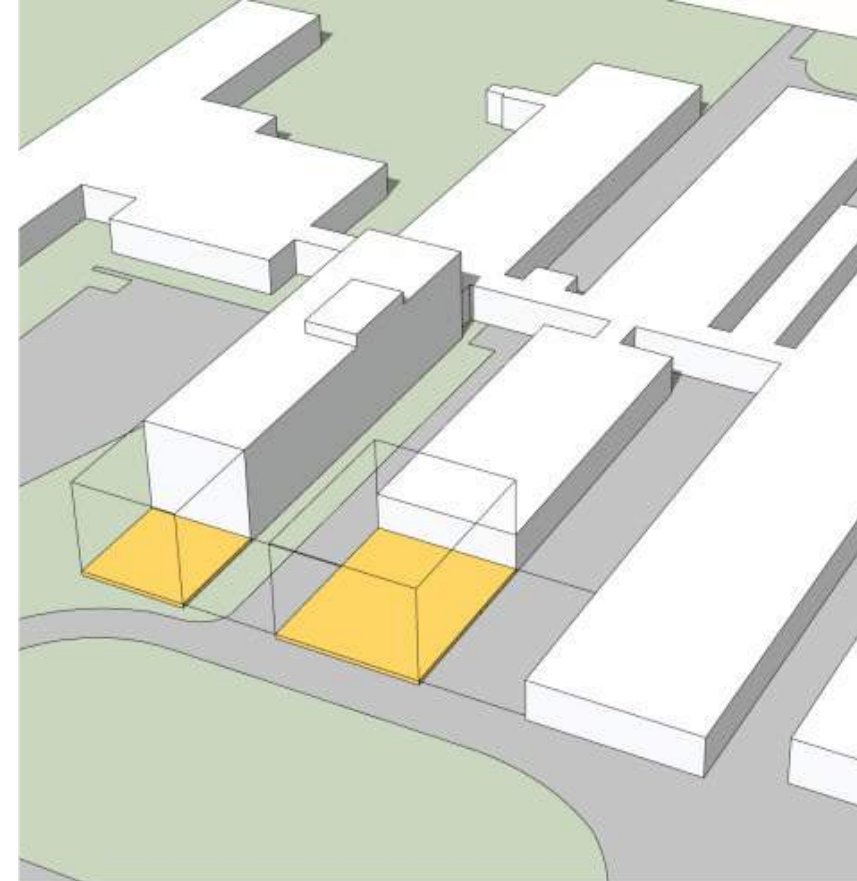
ARCHITECTS: SVA International

MAIN CONTRACTOR: WBHO Construction

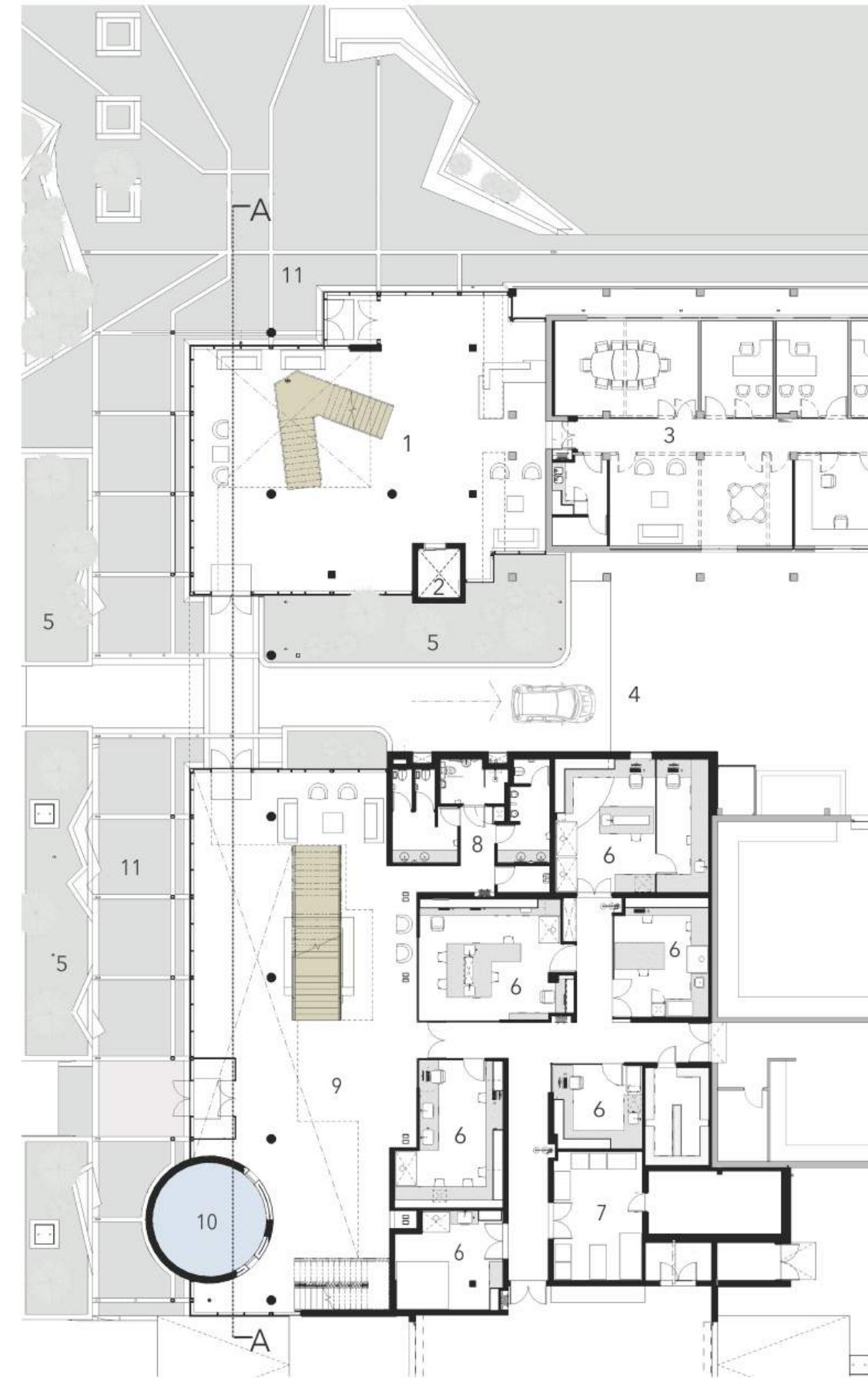
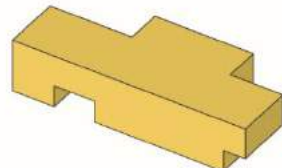
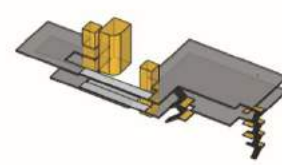
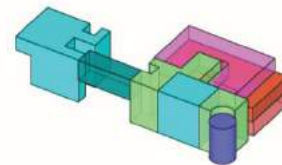
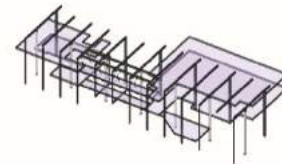
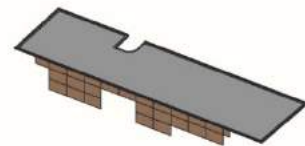
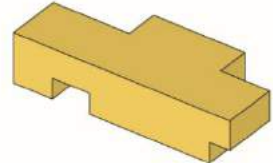
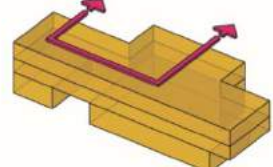
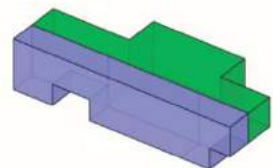
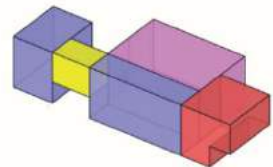
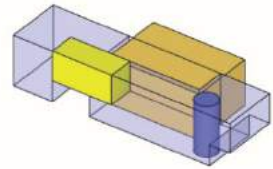
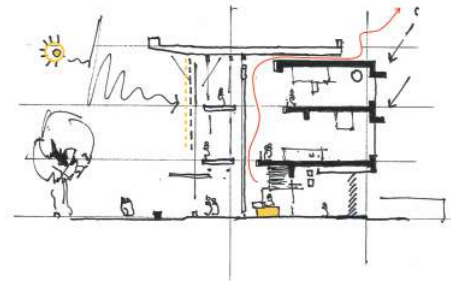
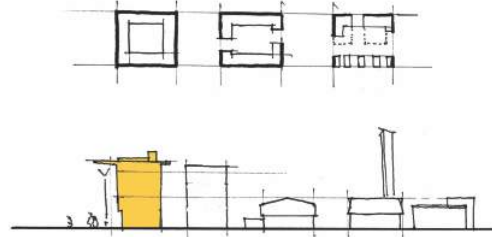
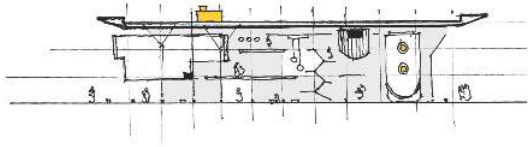
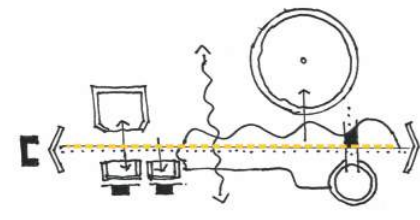
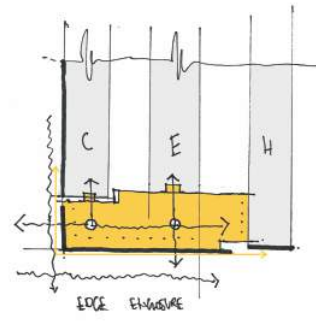
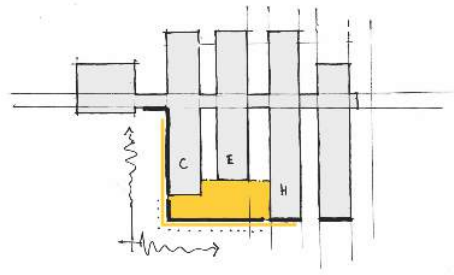




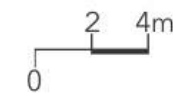








GROUND FLOOR PLAN



#### LEGEND

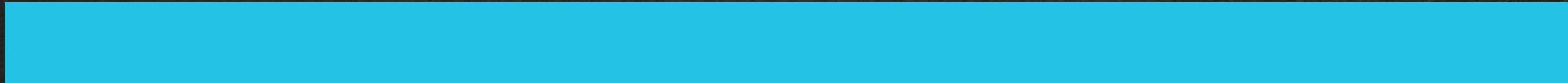
1. Foyer 01
2. Passenger Lift
3. General Offices
4. Service Yard
5. Planter
6. Research Laboratories
7. Cold Room
8. Ablutions
9. Foyer 02
10. Dive Tank
11. Public Area







# THE PROJECT OVERVIEW





# PROJECT OVERVIEW

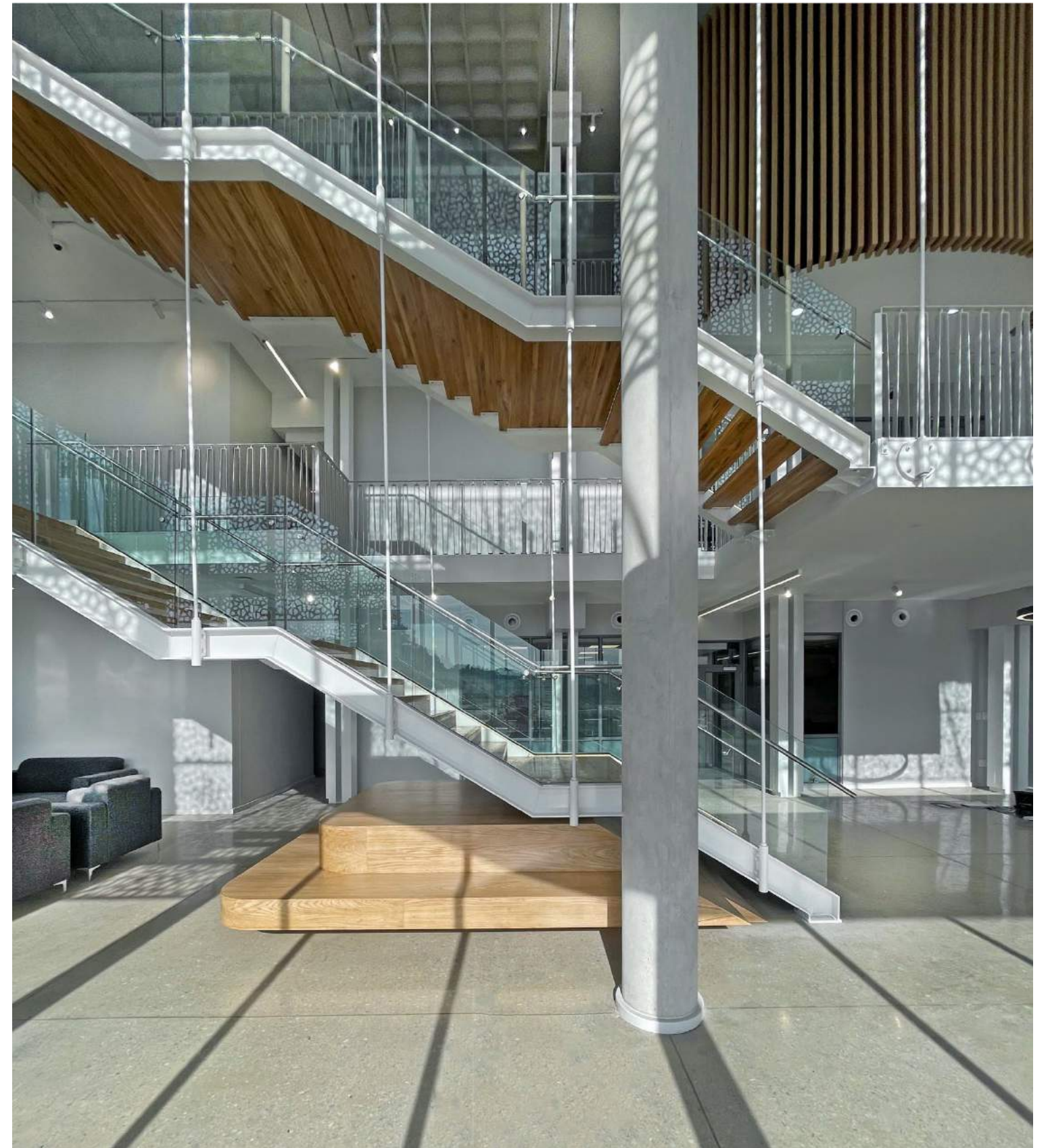
## STRUCTURAL STEELWORK

Project Completed: September 2022

Steelwork Completed: July 2022

Tonnage: ±80 tons

Profiles used: Various





# PROJECT OVERVIEW

## STRUCTURAL STEELWORK

Structural Engineer: BVI Consulting Engineers

Steelwork Contractor: USS

Steel Detailer: Tekla Structures

Steel Merchant/s:





# PROJECT OVERVIEW

## METAL CLADDING AND ROOFING

Project Completed: September 2022

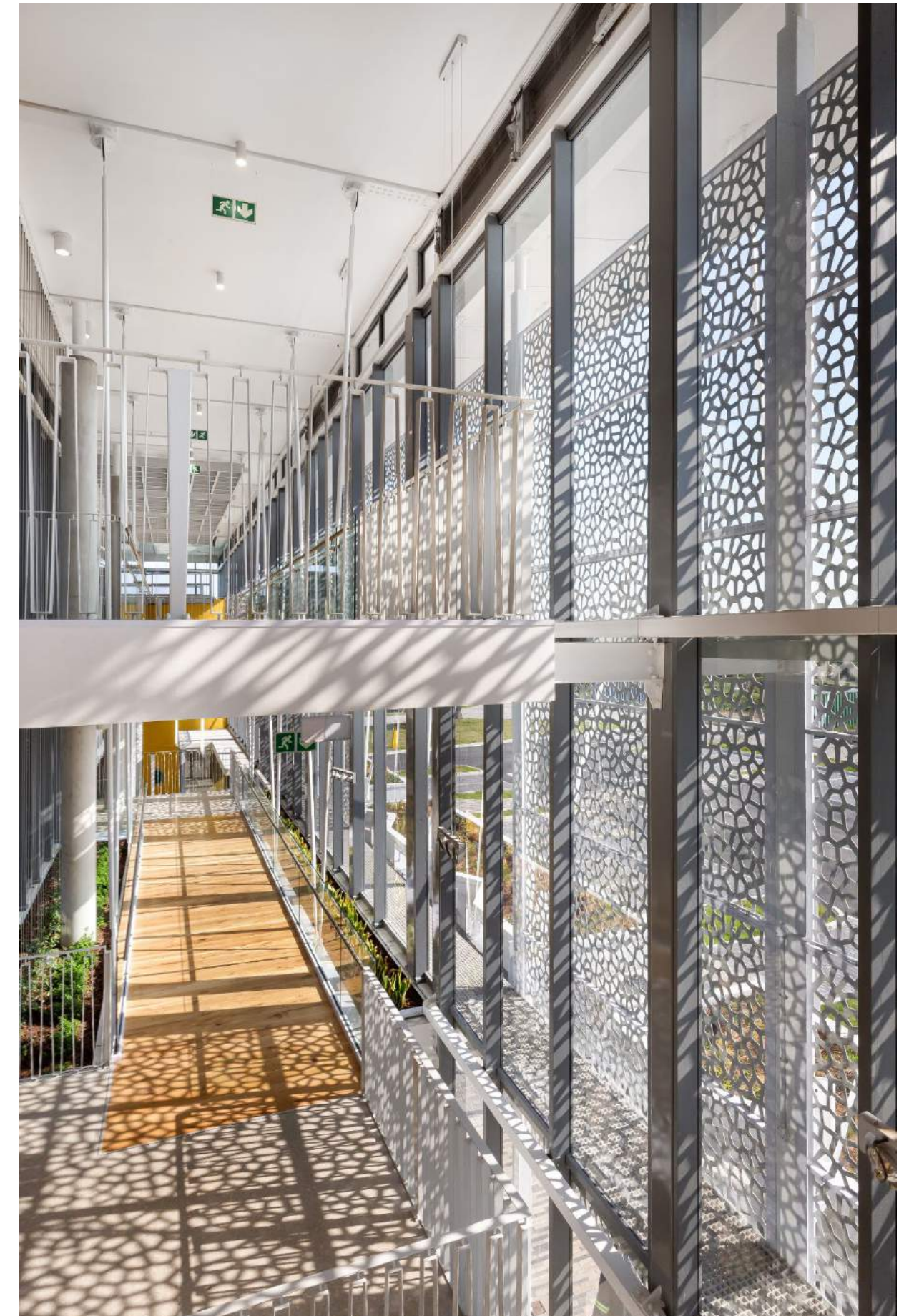
Cladding Completed: July 2022

Cladding Material Used: Aluminum 0.8mm, Coated G4 / 4mm ACM panels

Cladding Profile: GRS 'Klip-Lok 406' Concealed Fix

Cladding Area Coverage:  $\pm 1\,000\text{ m}^2$  roofing /  $\pm 450\text{ m}^2$  – façade ACM screen

Cladding Tonnage:





# STRUCTURAL FRAMING

STRUCTURAL ENGINEER: BVI CONSULTING ENGINEERS

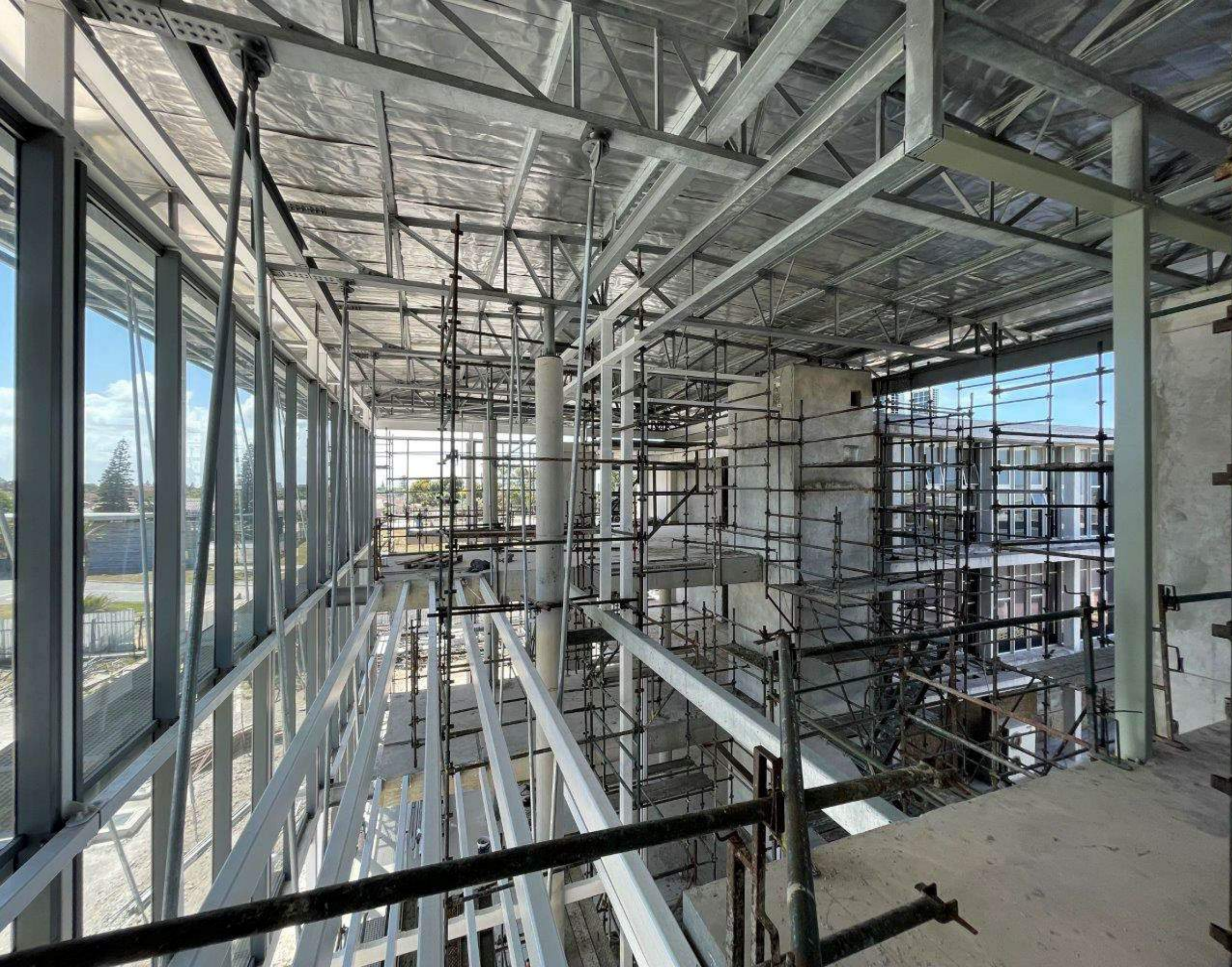
STEELWORKS CONTRACTOR: USS

STEEL DETAILER: USS - TEKLA STRUCTURES

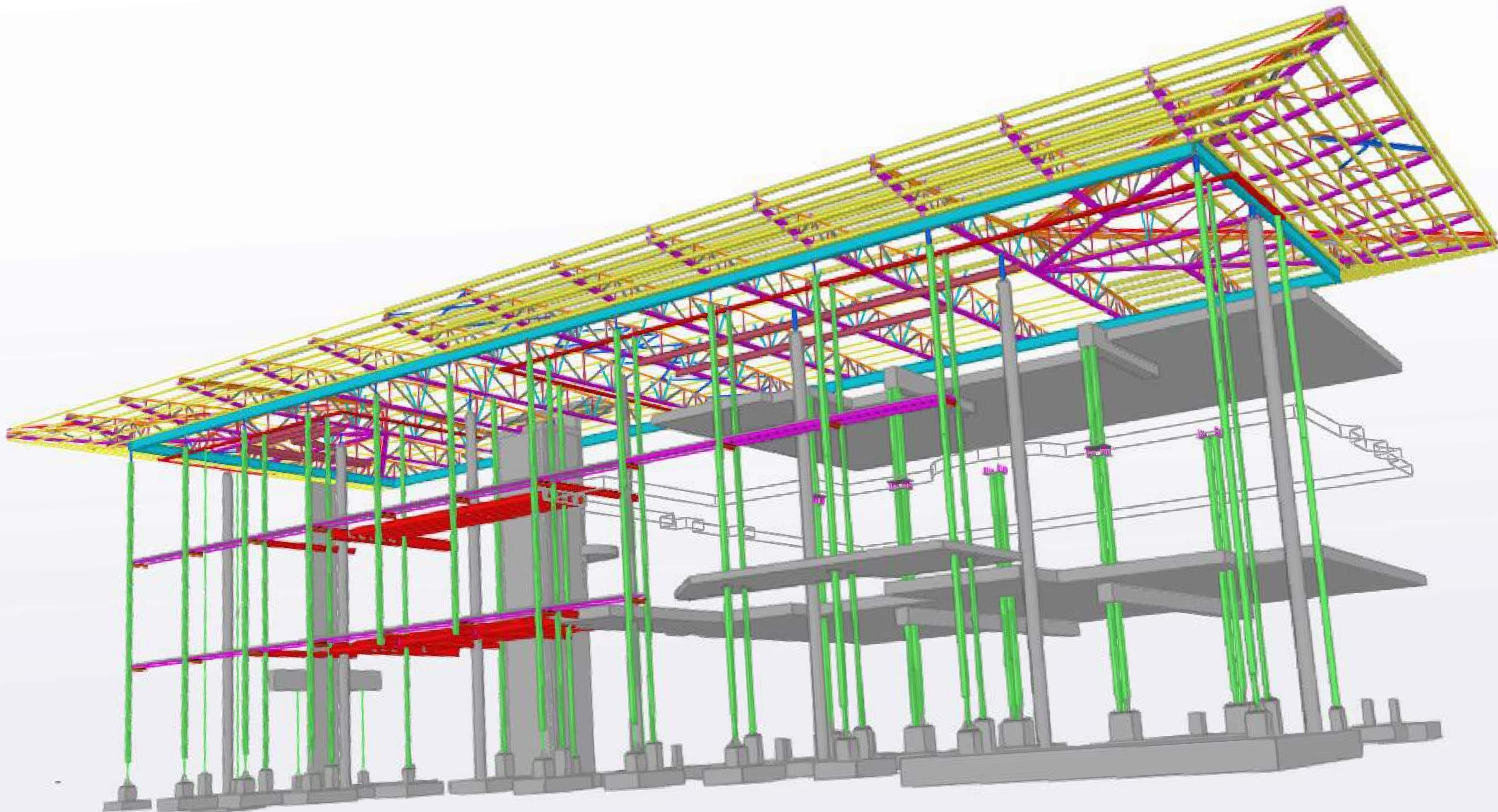




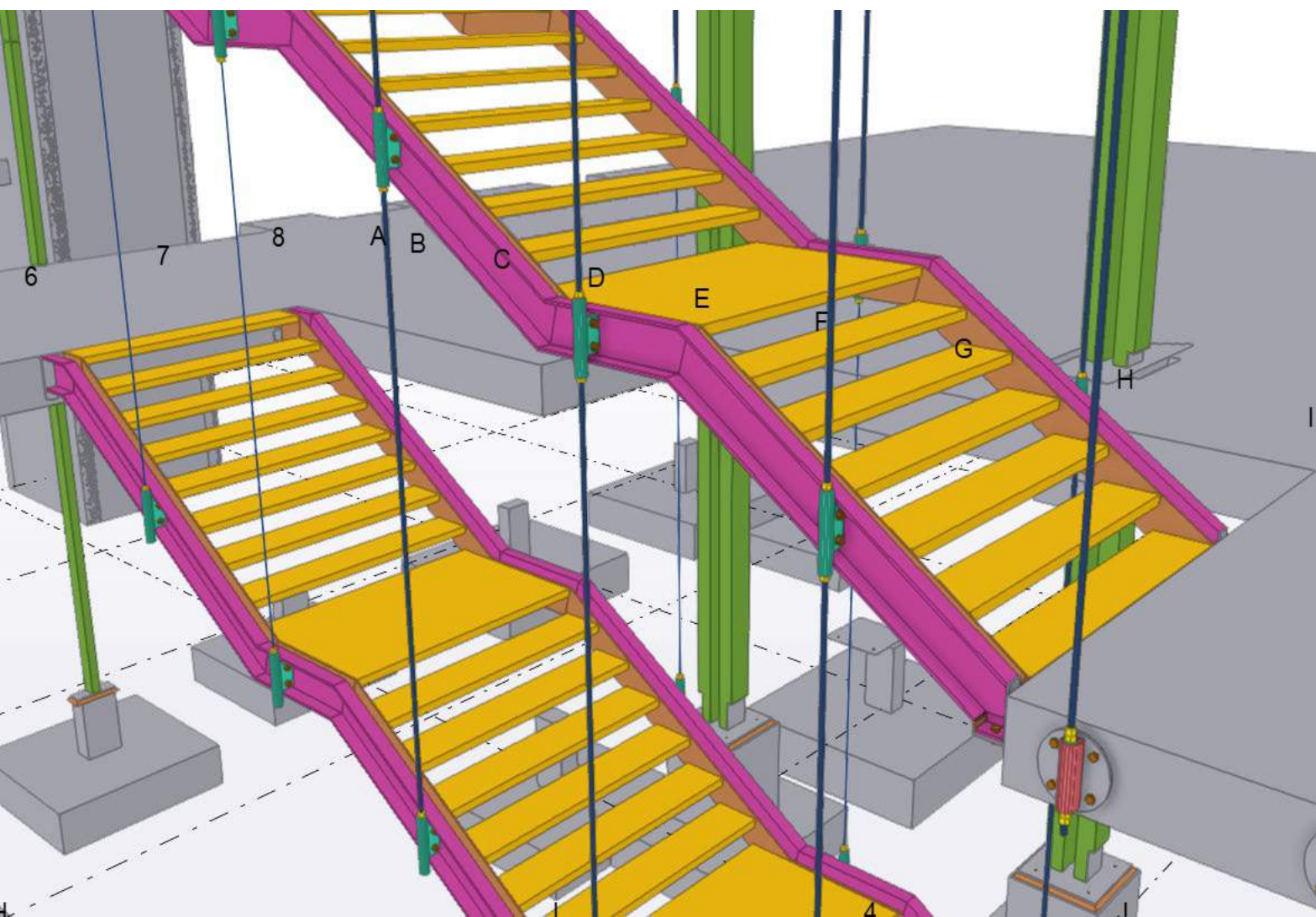
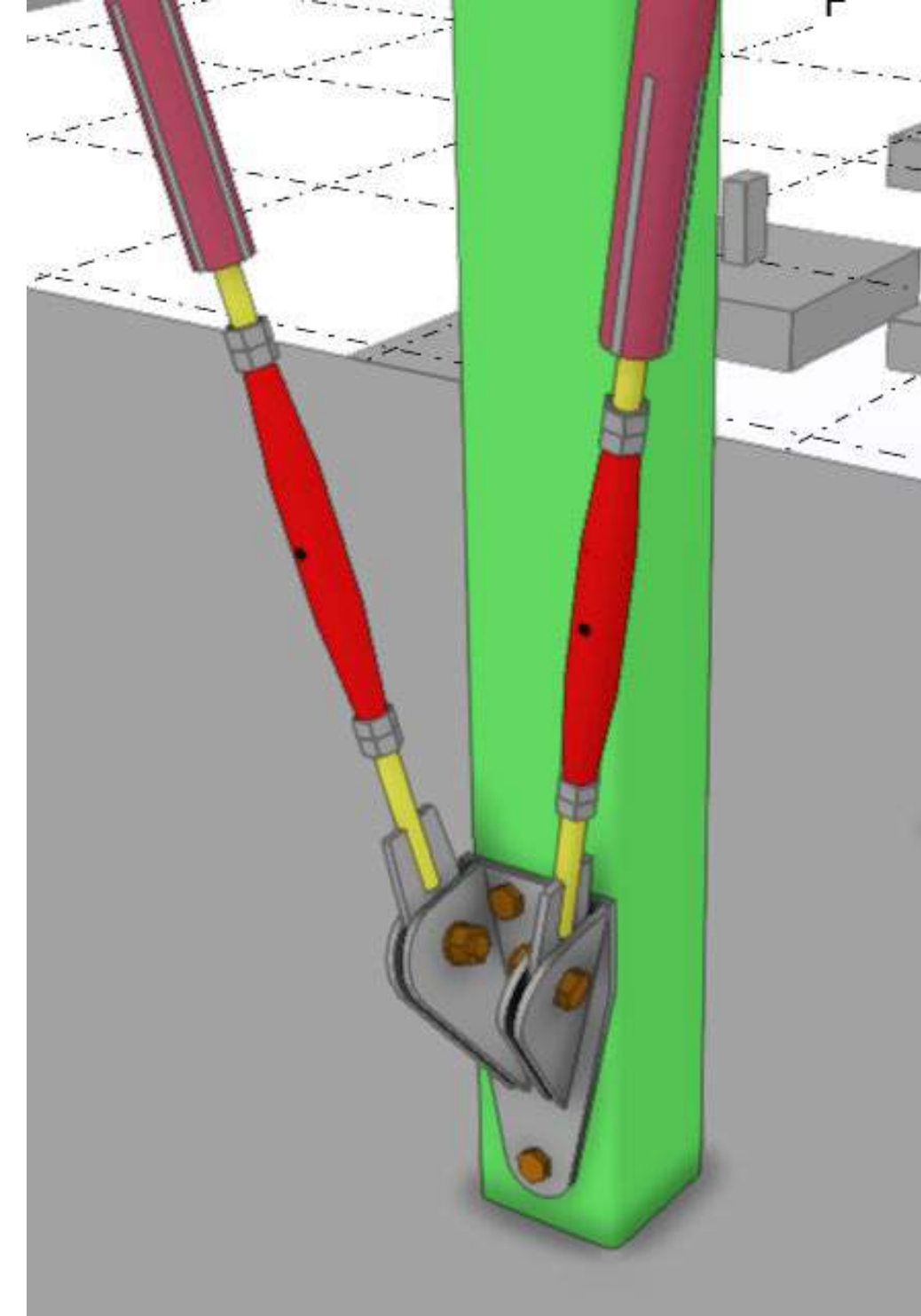
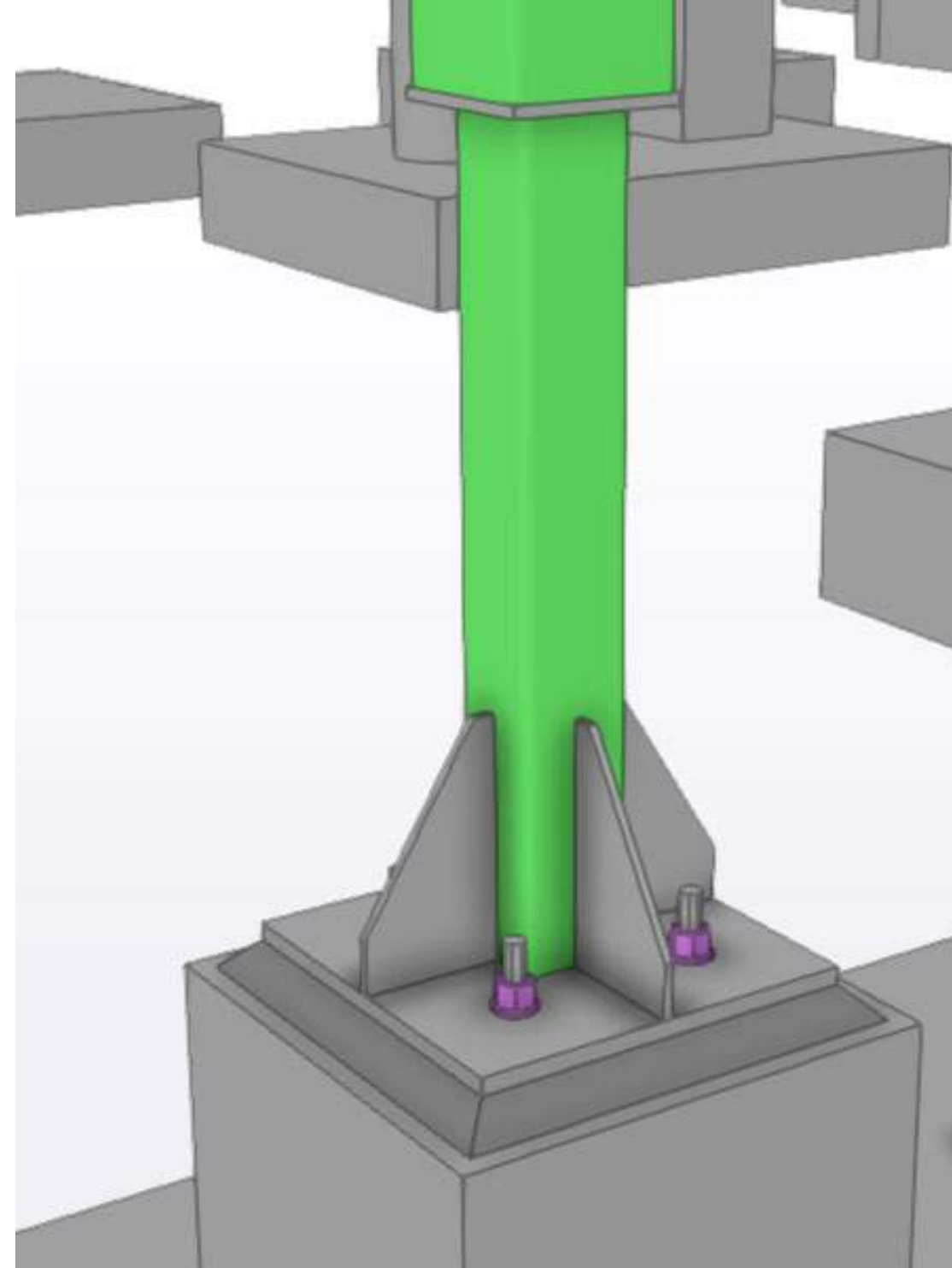
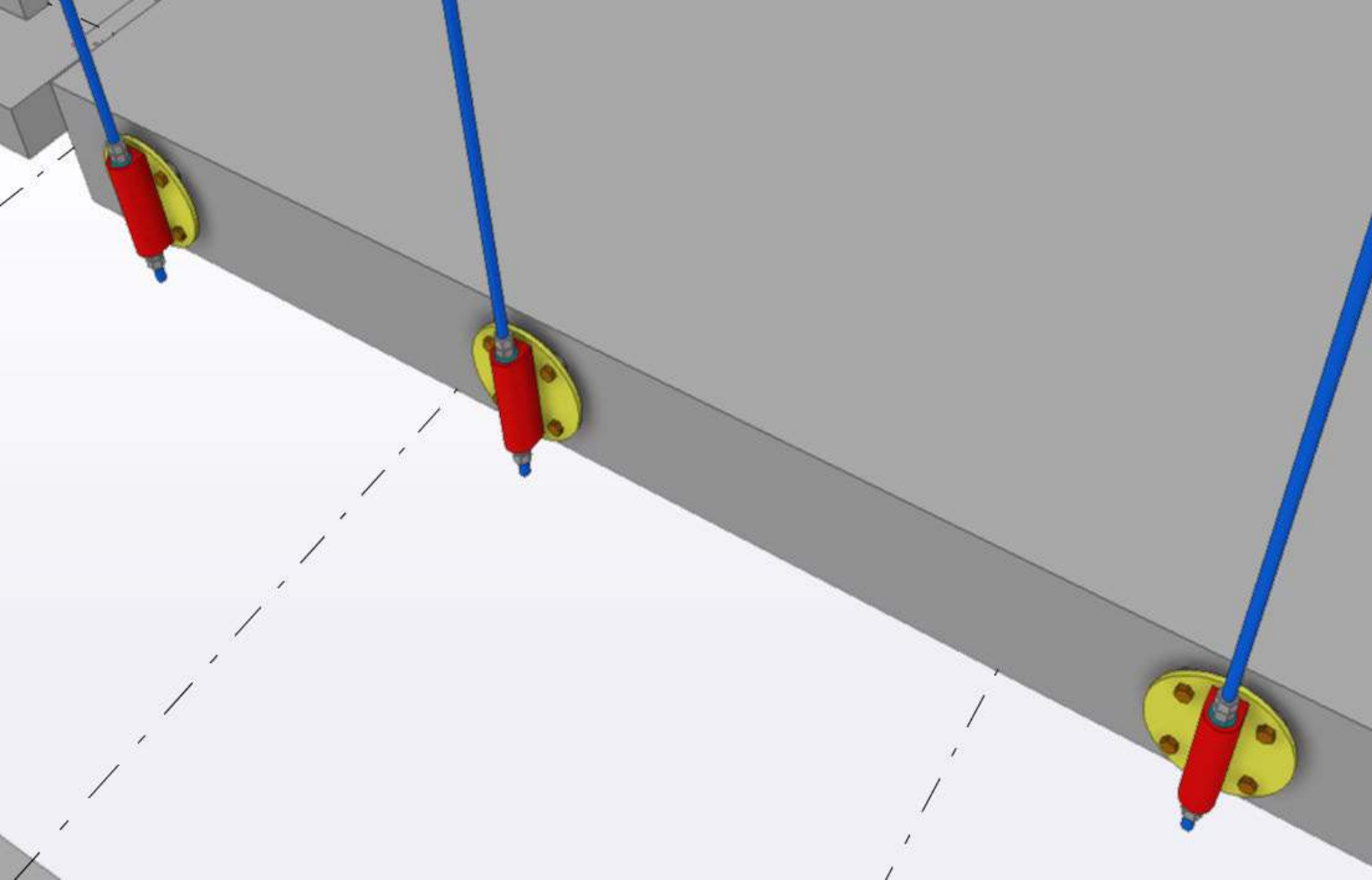












- Various connection details



# METAL CLADDING/ ROOFING

CLADDING MANUFACTURER: Global Roofing Solutions / Hulabond

CLADDING ROLL FORMER / PROFILER: GRS / Likusasa

CLADDING/ ROOFING SUPPLIER: Global Roofing Solutions / Hulabond

CLADDING/ ROOFING CONTRACTOR: Likusasa / Ceiling Master

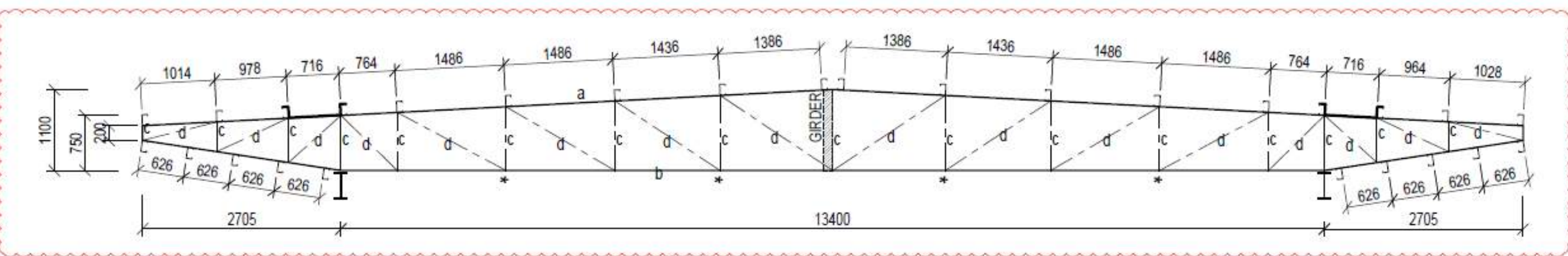
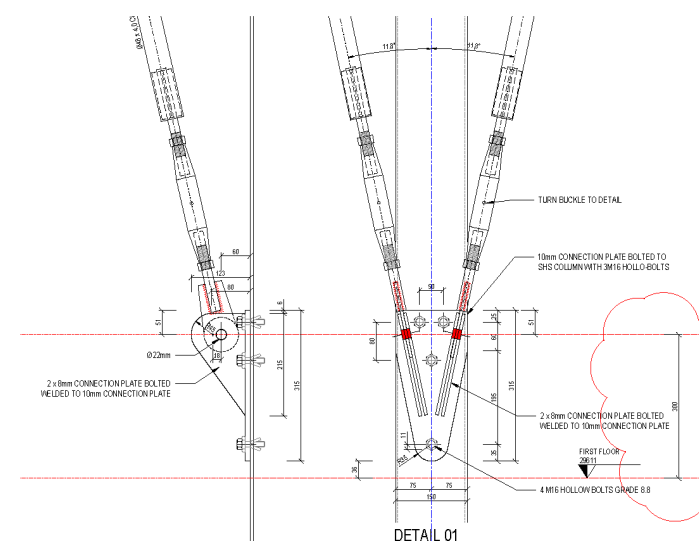
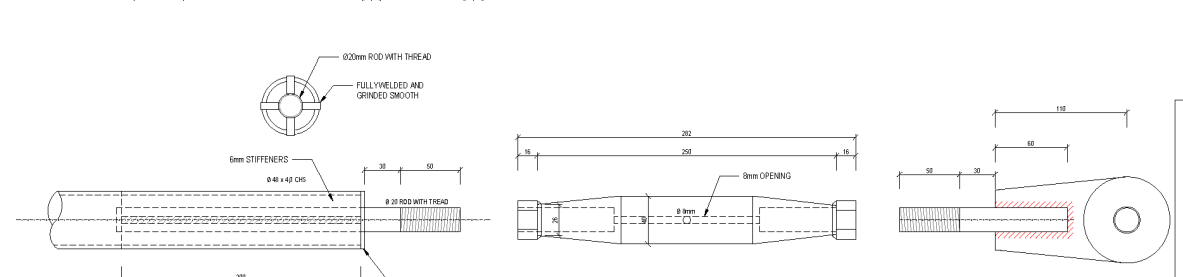
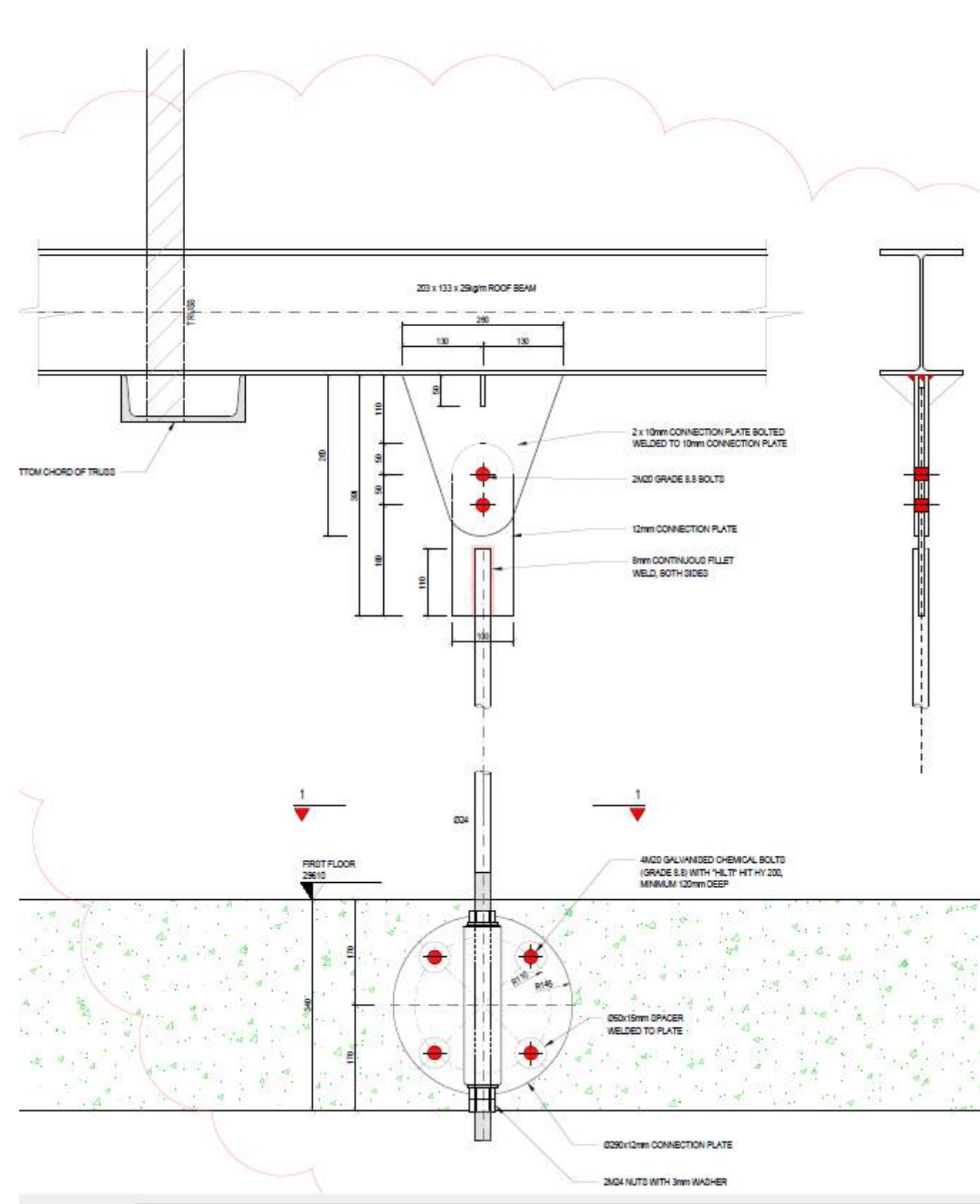
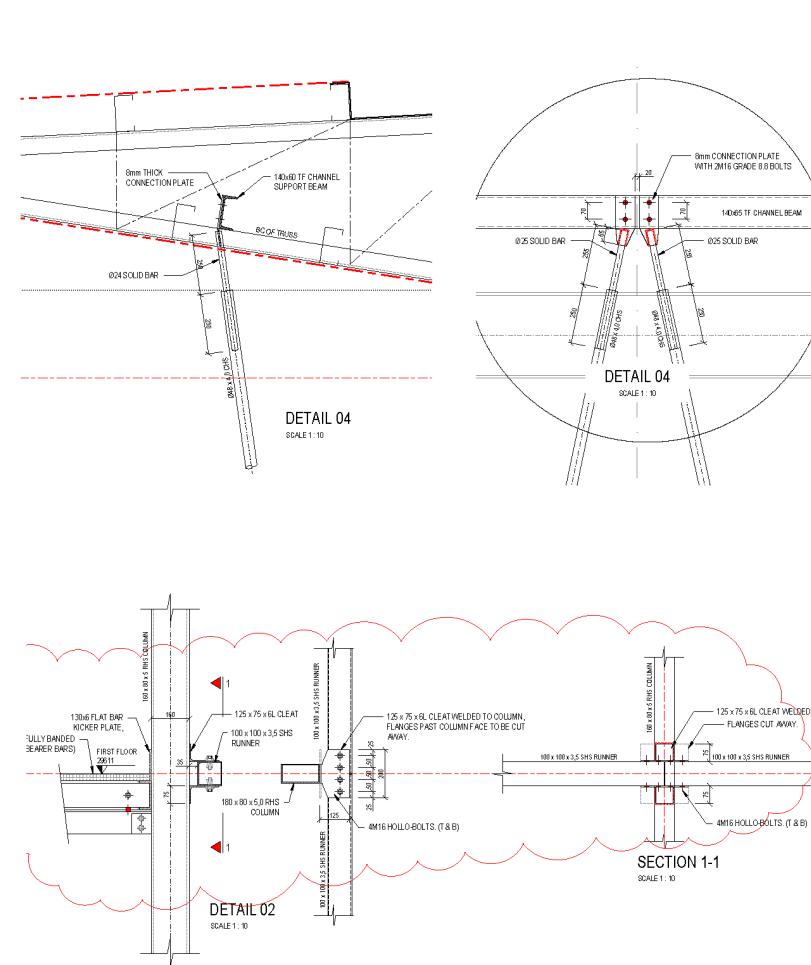
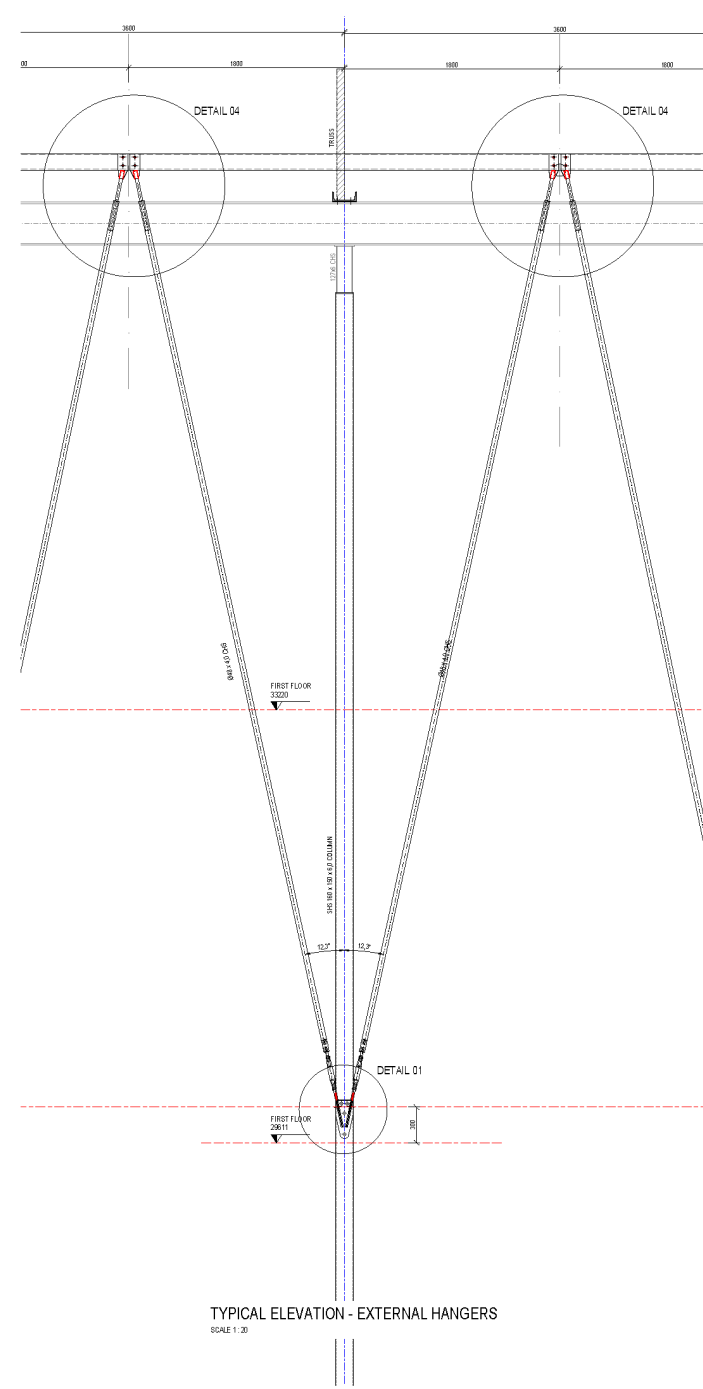
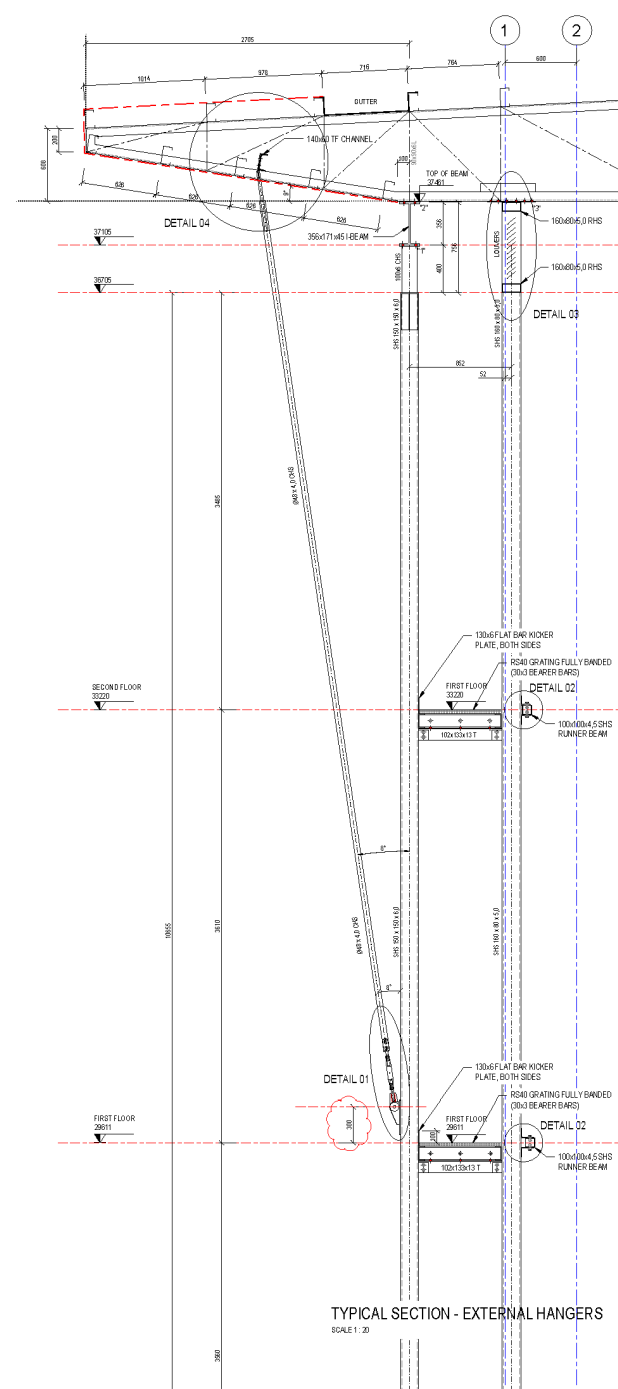








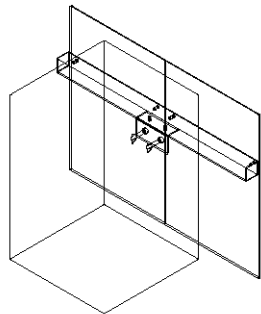












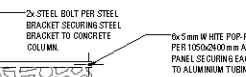
300x300mm RC COLUMN @ 4200mm O.C. SPACING

50x200x4000mm WHITE POWDER COINGAL STEEL BRACKET BOLT CONCRETE COLUMN USING CASTING TO BE CONFIRMED

1050x400mm ACI M PERFORATED SUNSCREEN PANEL FIXED TO ALUMINUM SQUARE TUBING USING 20mm DIA AND 24mm WHITE PUP-BOLTS PER PANEL

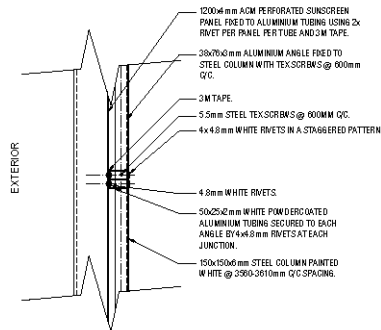
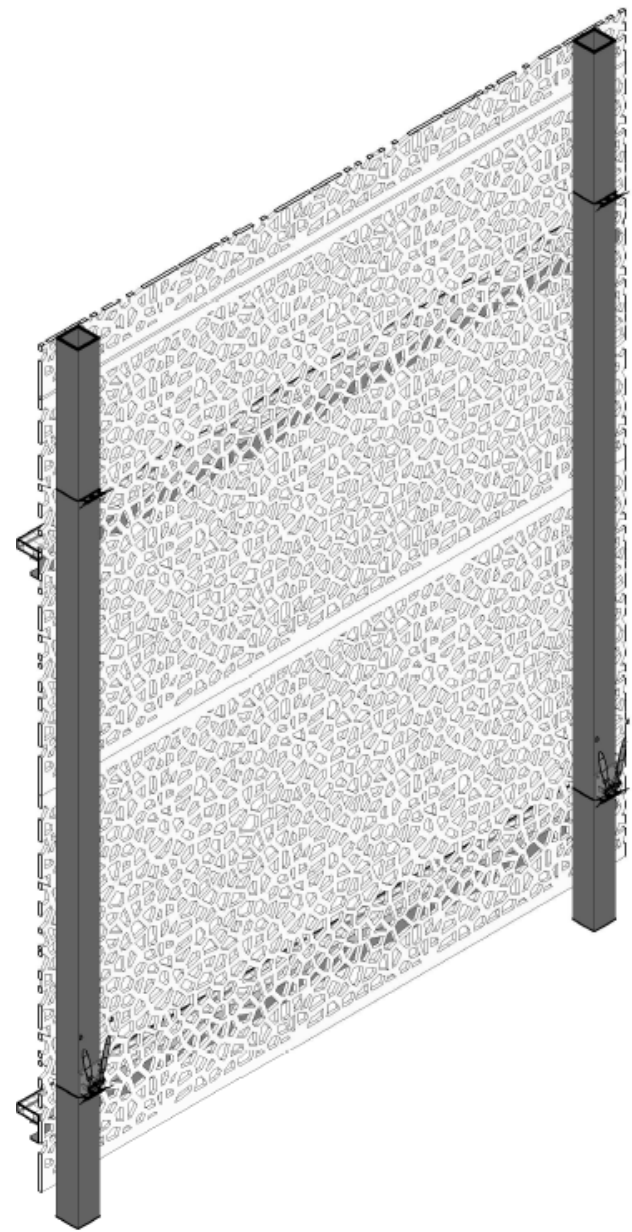
50x200x400mm WHITE POWDER COINGAL ALUMINUM TUBING TO BE FIXED BRACKET USING 50mm WHITE PUP-BOLTS

FACADE TO RC COLUMN DETAIL PLAN  
SCALE 1:10  
FACADE DETAILS



Technical drawing of a wall section showing a cross-section of a wall with a textured surface. The wall is 3000 units wide and 2500 units high. It features a 5mm white pop rivet at the top and bottom, and a 4.8mm white pop rivet in the middle. The wall is divided into three vertical sections, each 1133 units wide. The wall is labeled "5mm STEEL TEX SURF" on the right side.

**IF IN DOUBT,  
PLEASE ASK**



EXTERIOR

1200mm A/CW PERFORATED SUNSCREEN PANEL FIXED TO ALUMINUM TUBING USING CORSET PER PANEL TEST TUBE AND 10MM W/PE

3M T/PE

5.5mm STEEL TDX SCREWS @ 600mm O/C

39x760mm ALUMINUM ANGLE FIXED TO STEEL COLUMN WITH TDX SCREWS @ 600mm O/C

150x150mm STEEL COLUMN PAINTED WHITE @ 2800-3010mm O/C SPACING

2x 4.8mm WHITE POP PIVETS PER PANEL PER TUBE

3410-3460

1460

1433

1433

1433

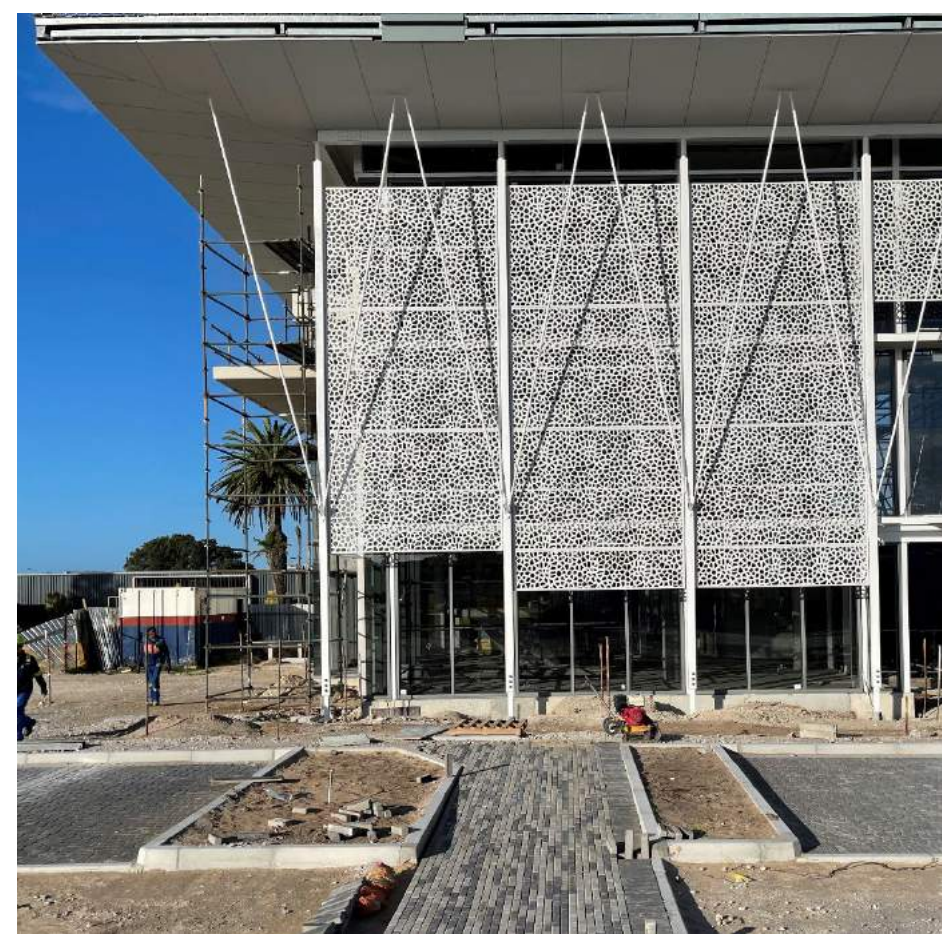
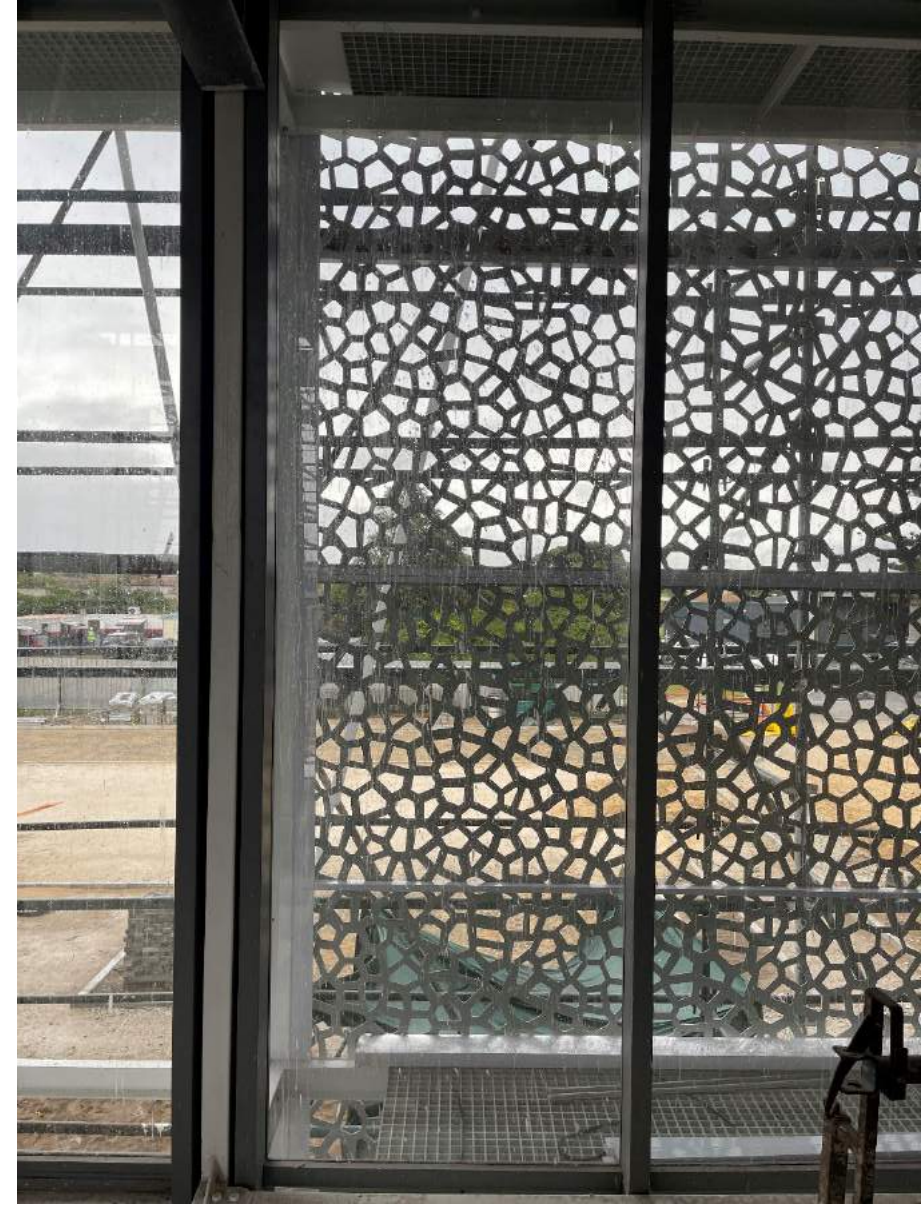
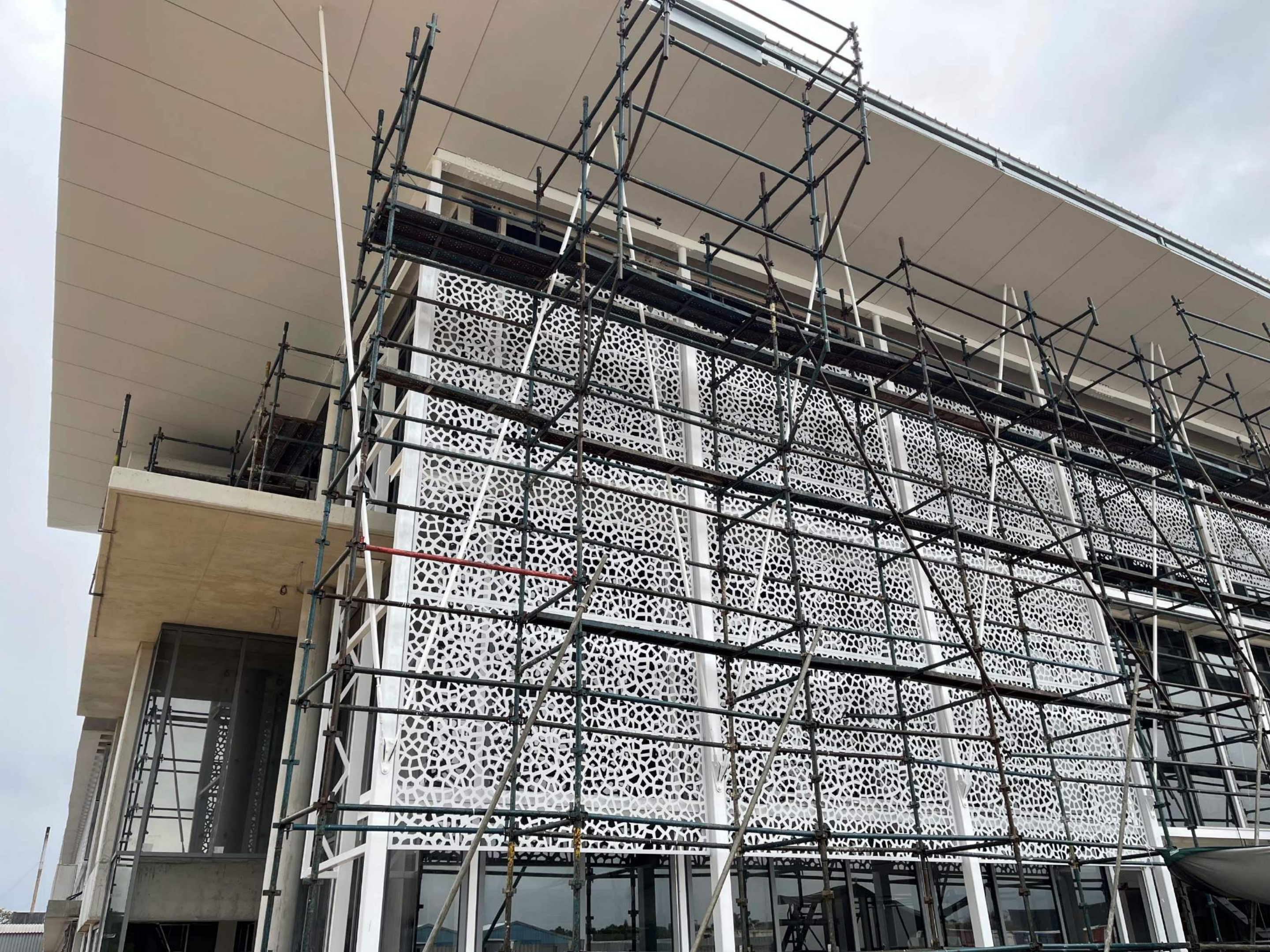
2x 62x2mm WHITE POWDER COATED ALUMINUM TUBING FASTENED TO ANGLE

4x 4.8mm WHITE POP PIVETS

FACADE TO STEEL COLUMN DETAIL SECTION  
SCALE 1:10  
FACADE DETAILS

**IMPORTANT NOTE:**  
ALL METALS SCREWS, BRACKETS  
AND WASHERS TO BE STAINLESS  
STEEL, GALVANIZED OR  
ALUMINIUM TO SUIT CONDITION.  
INCLUDE NEOPRENE WASHERS TO  
PREVENT "BIMETALLIC  
CORROSION" OF METALS. ALL  
FIXING METHODS AS PER  
SPECIALIST DESIGN.











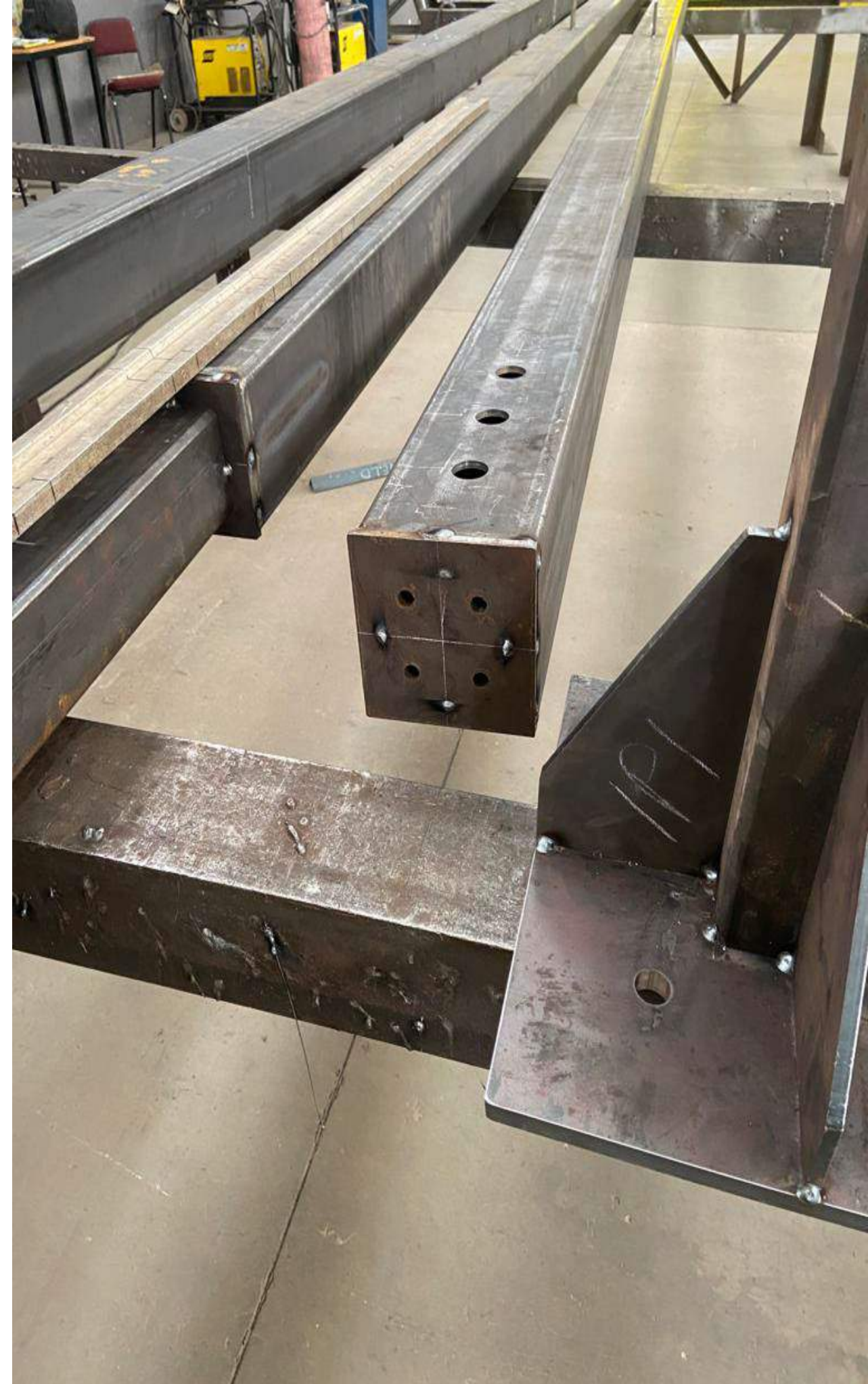




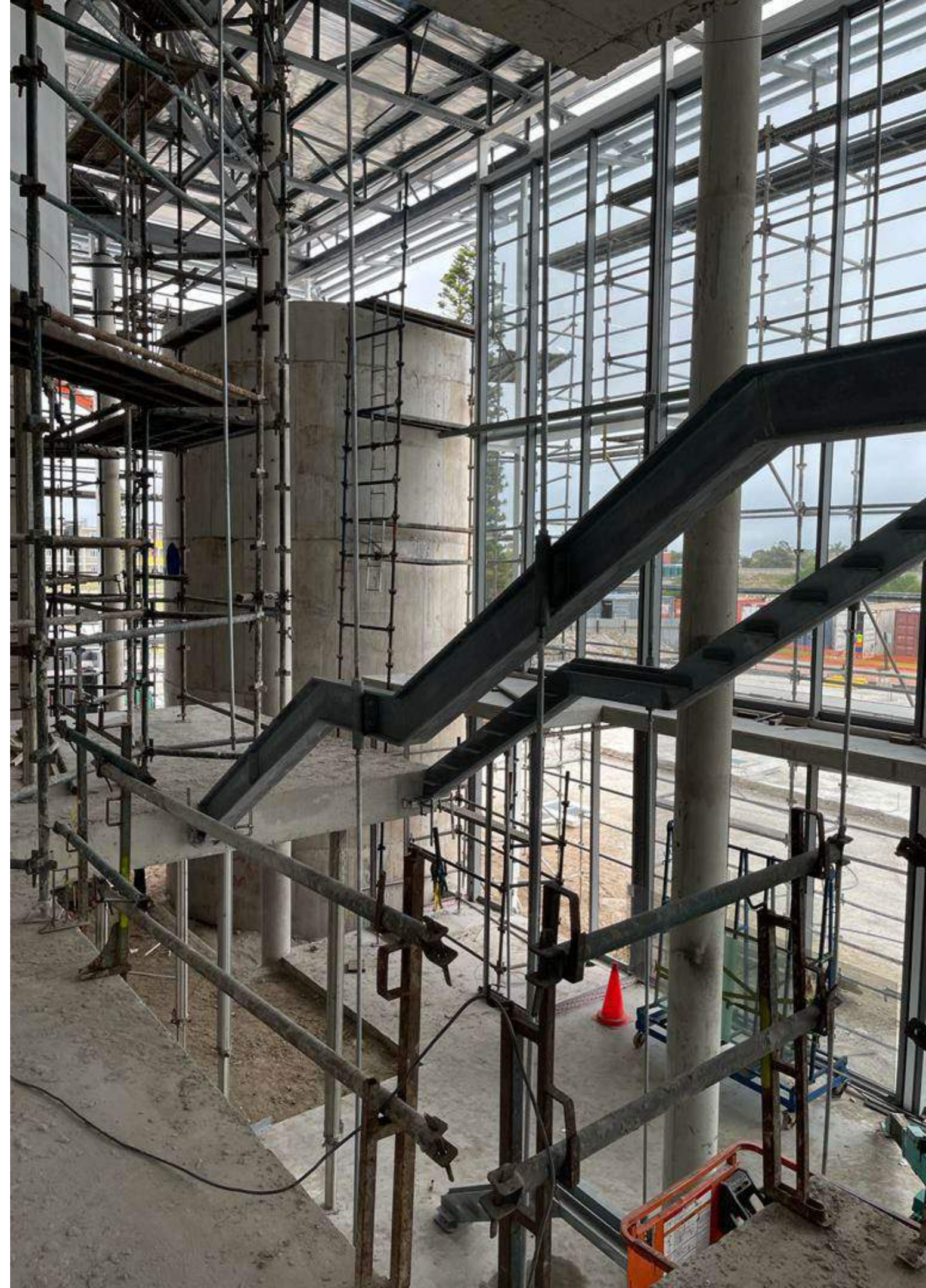
# FABRICATION

STEEL WORK CONTRACTOR: USS















# ERECTION / CONSTRUCTION / INSTALLATION

CONTRACTOR: USS / WBHO / Likusasa







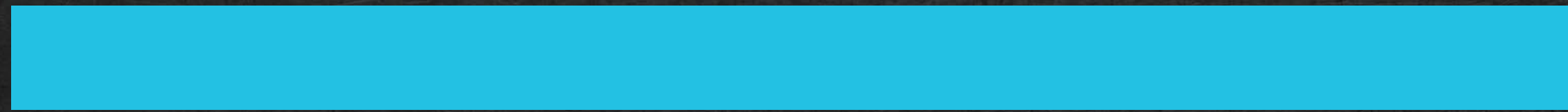




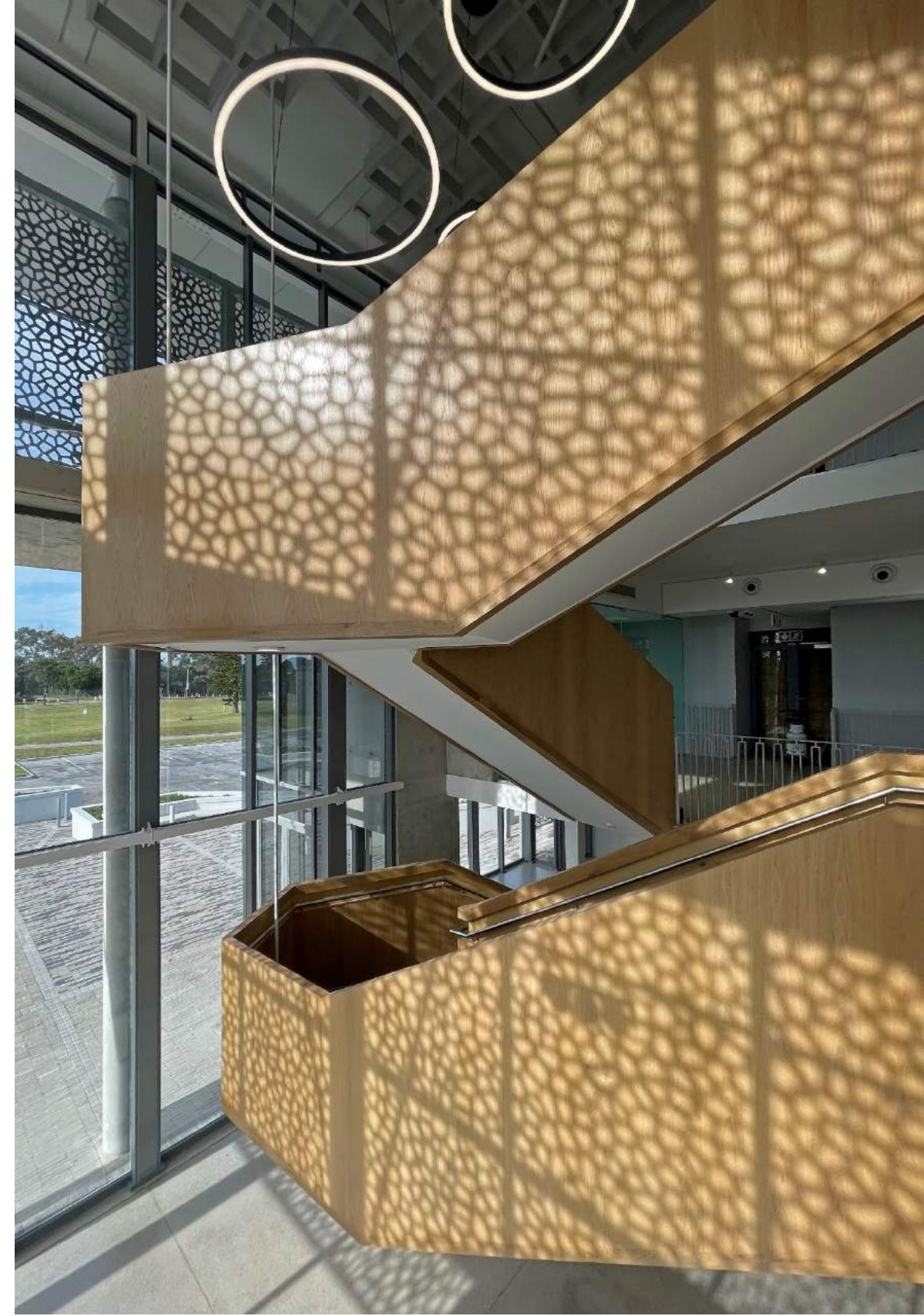
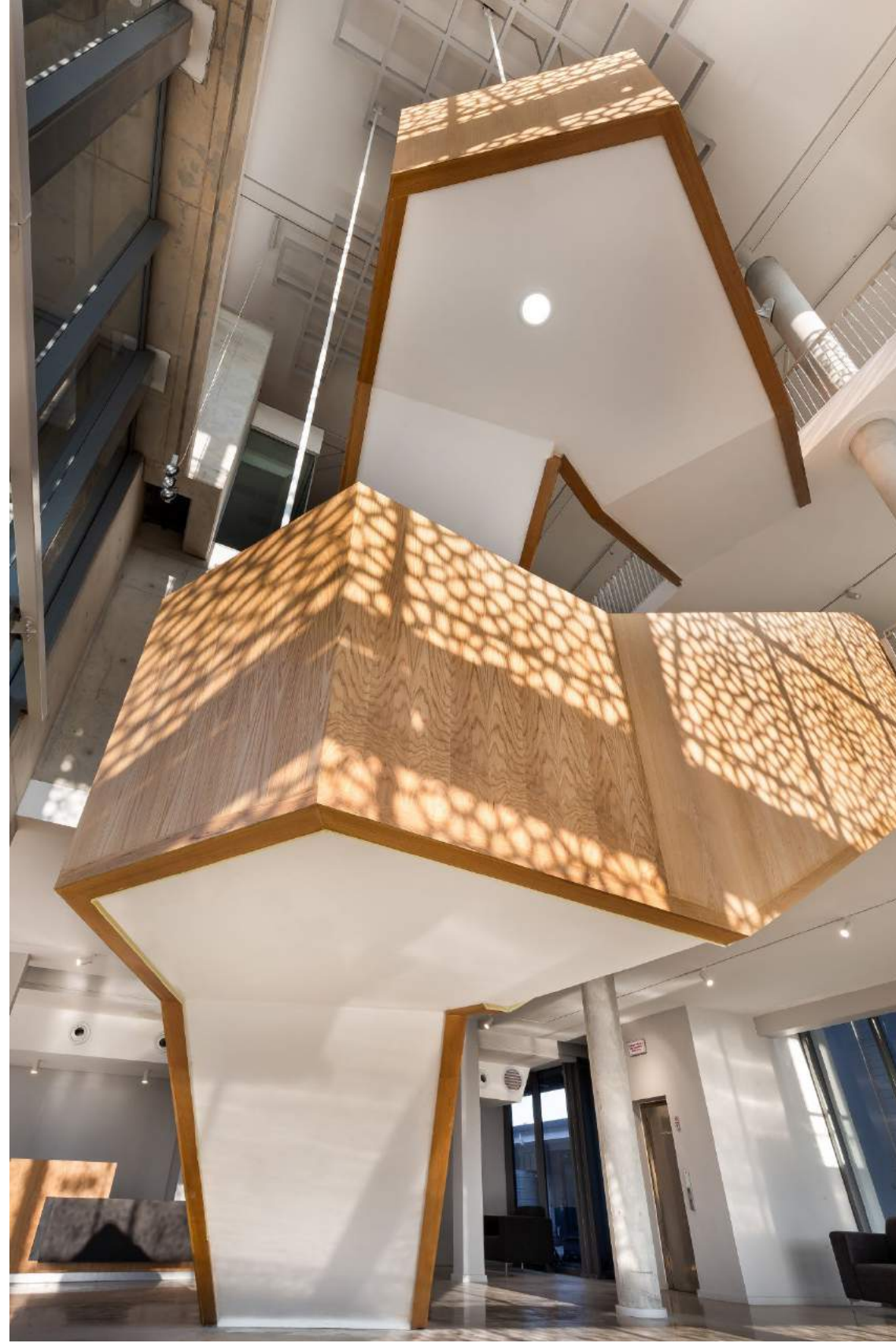




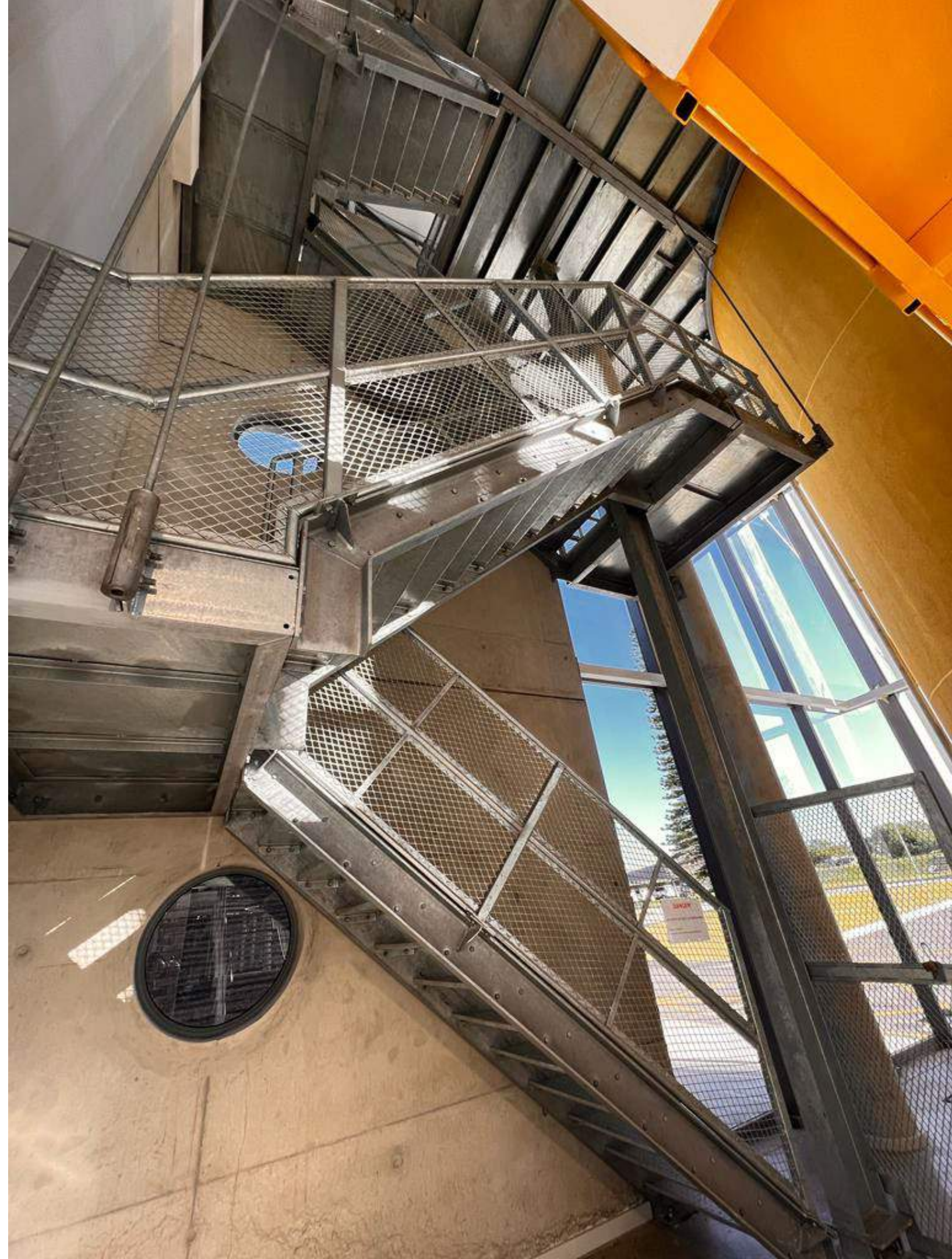
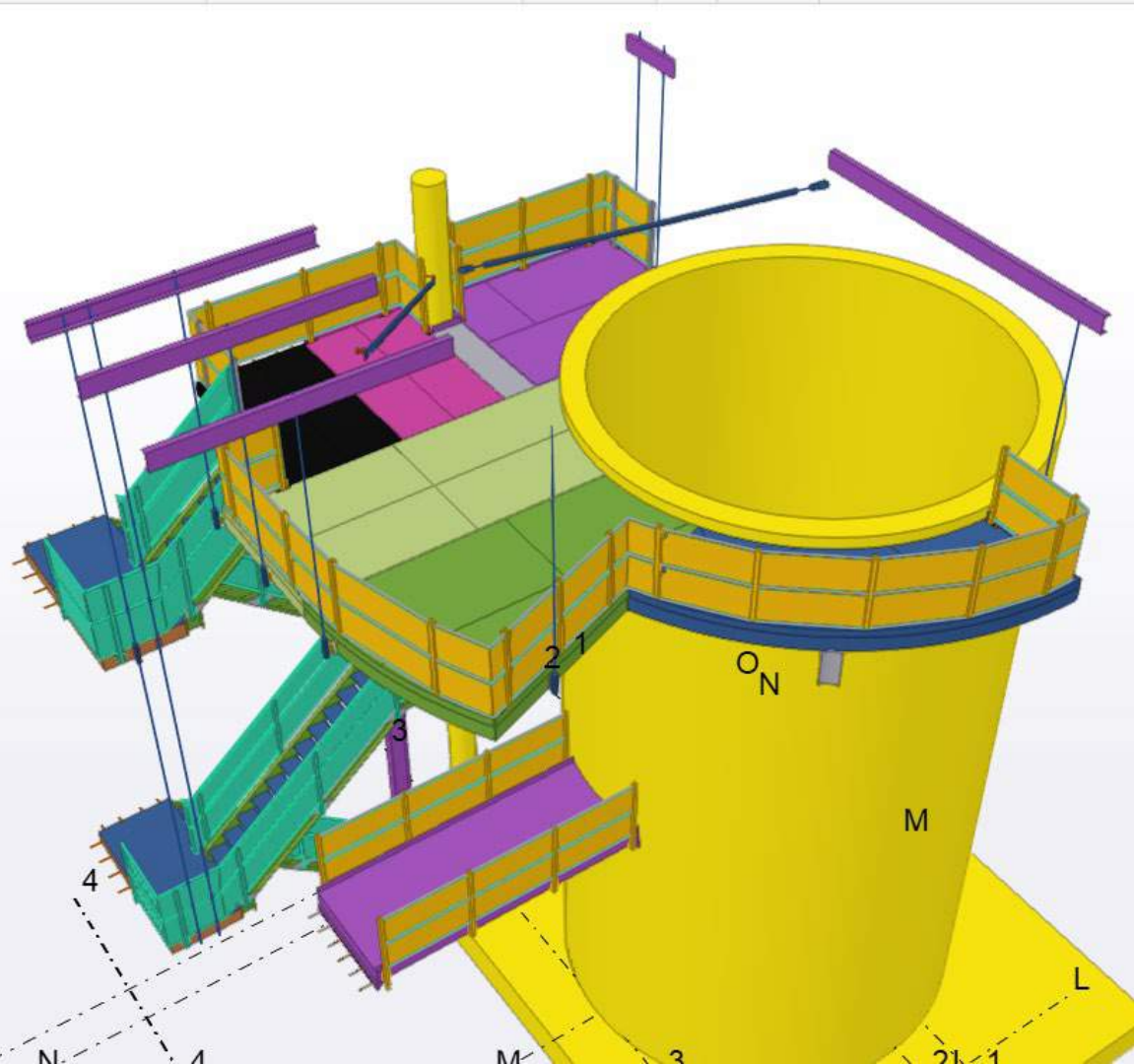
# CHALLENGES AND SOLUTIONS



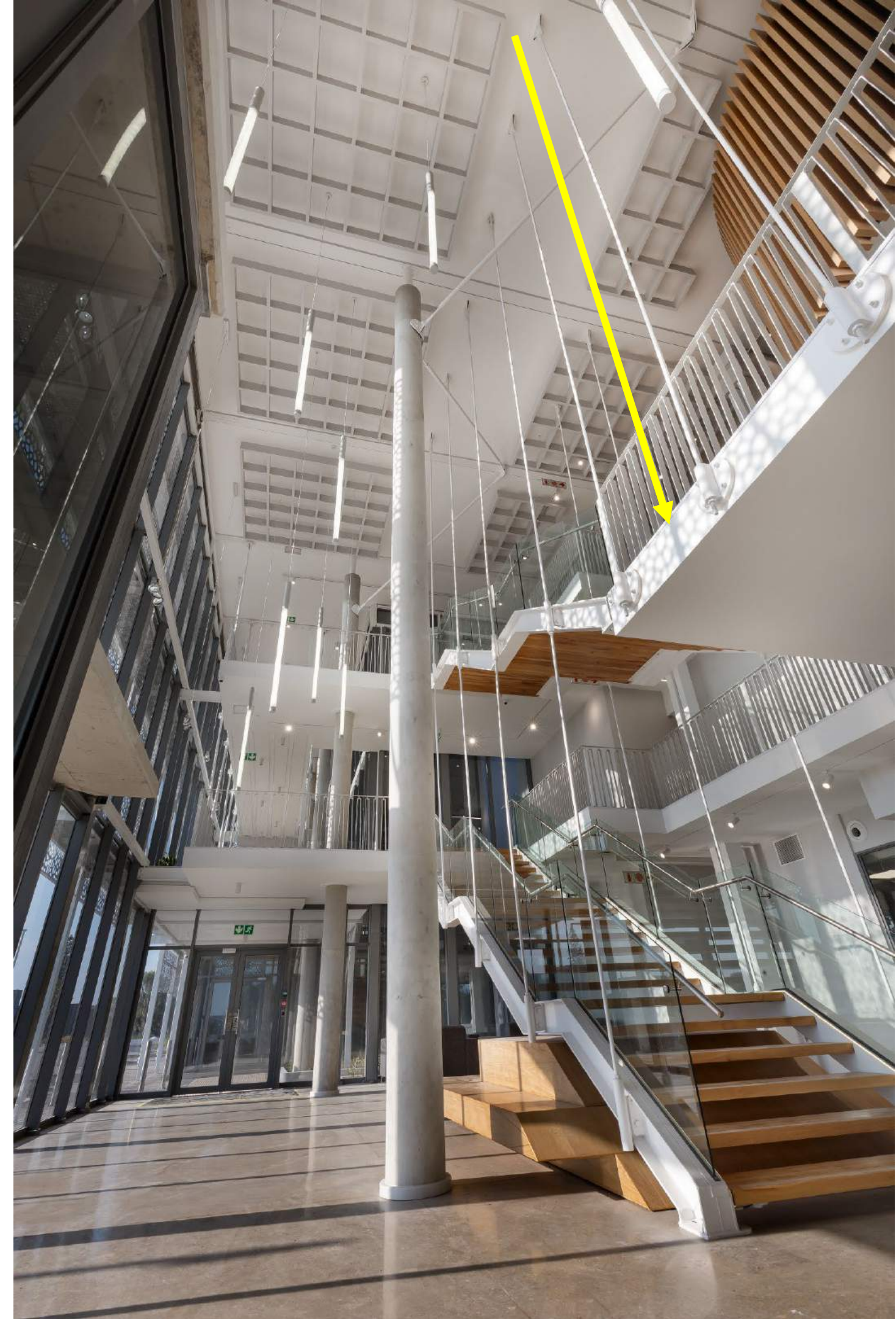














# THE BENEFITS OF STEEL IN THIS APPLICATION









# WHAT WE'RE PROUD OF







## SHAPING THE SEA

NELSON MANDELA UNIVERSITY  
OCEAN SCIENCES CAMPUS EXTENSION



ArchDaily > Projects > Campus > South Africa > Ocean Sciences Campus Extensions NMU / SVA International

## Ocean Sciences Campus Extensions NMU / SVA International



1



Saved



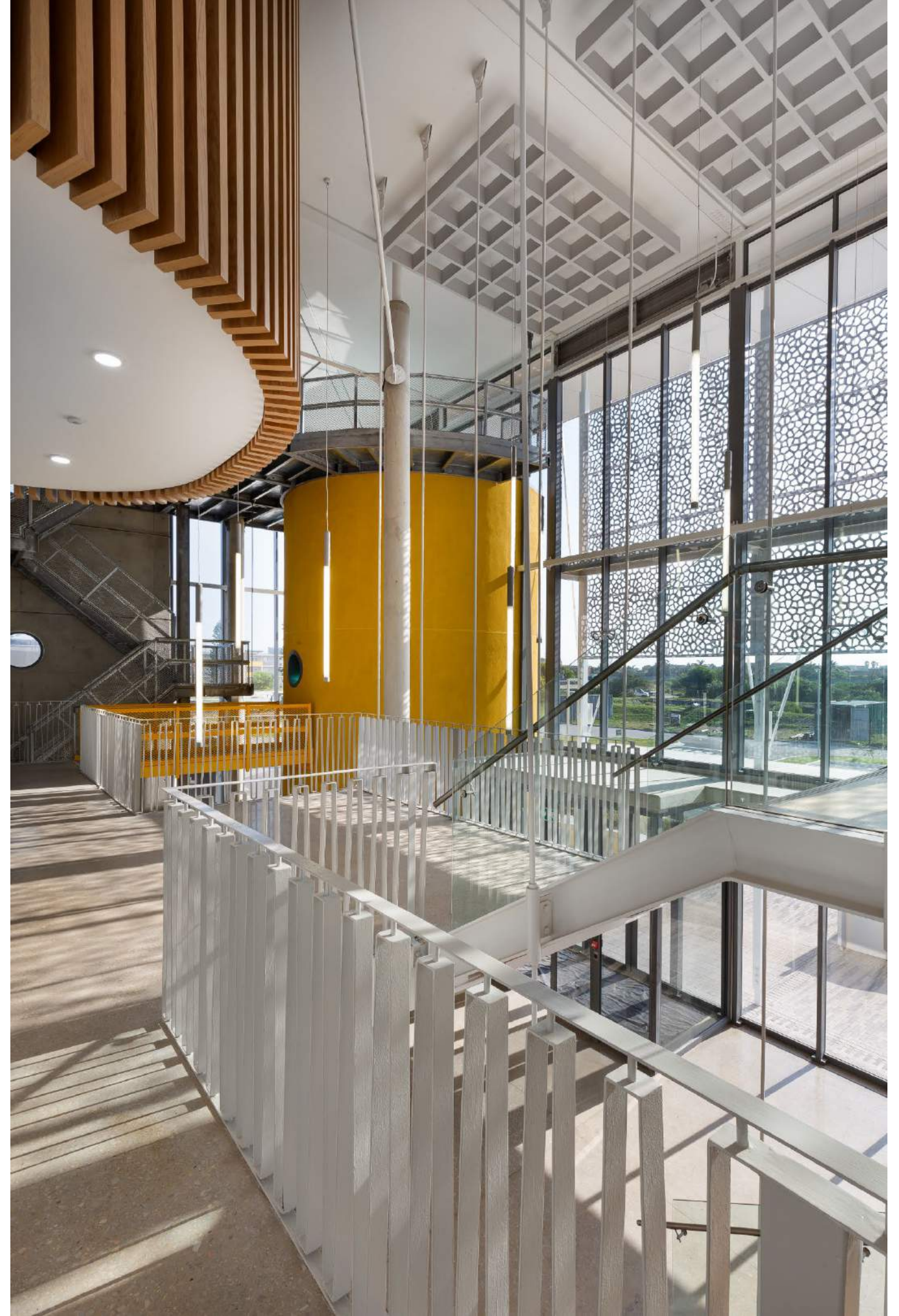
Curated by Hana Abdel

CAMPUS, UNIVERSITY • PORT ELIZABETH, SOUTH AFRICA

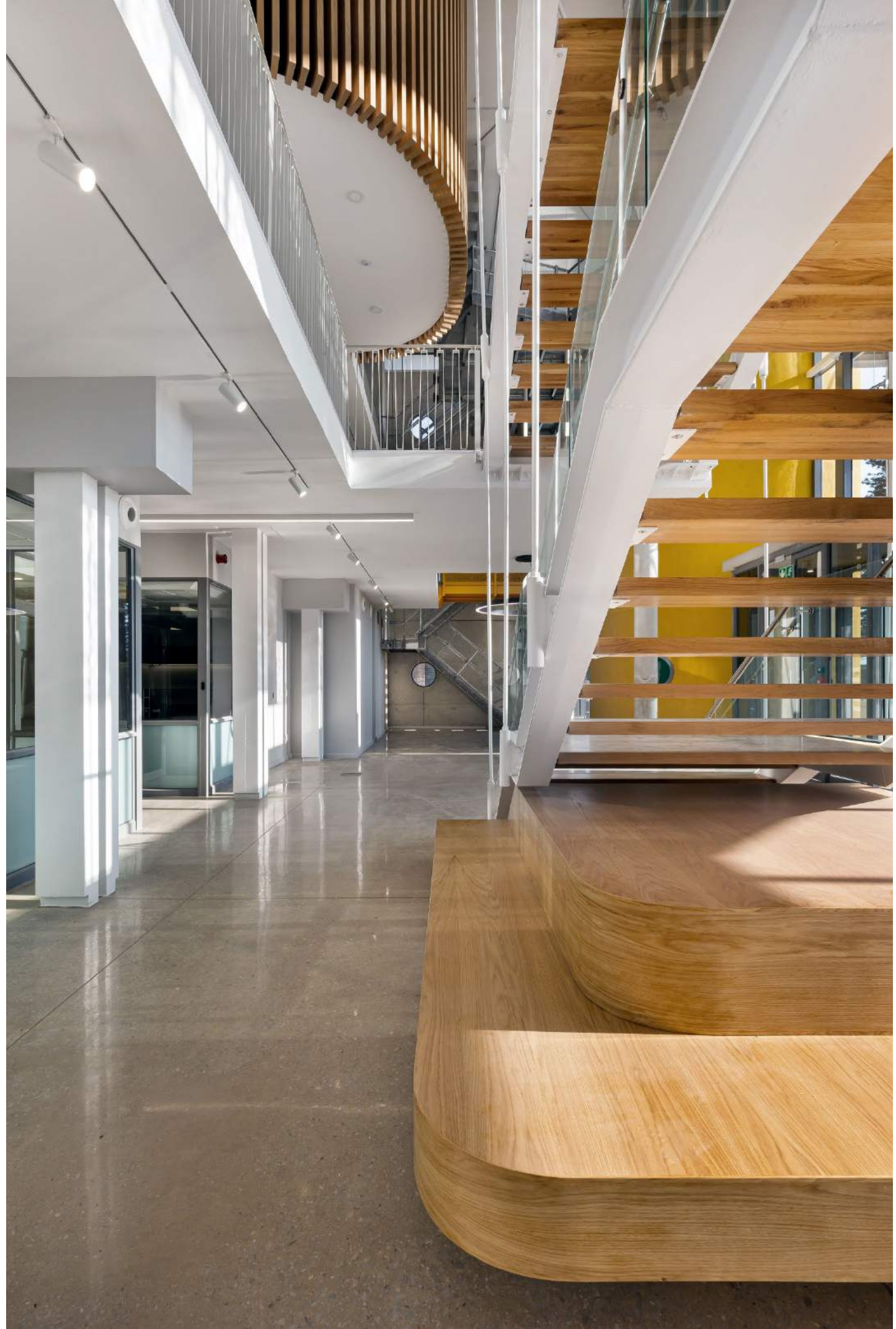












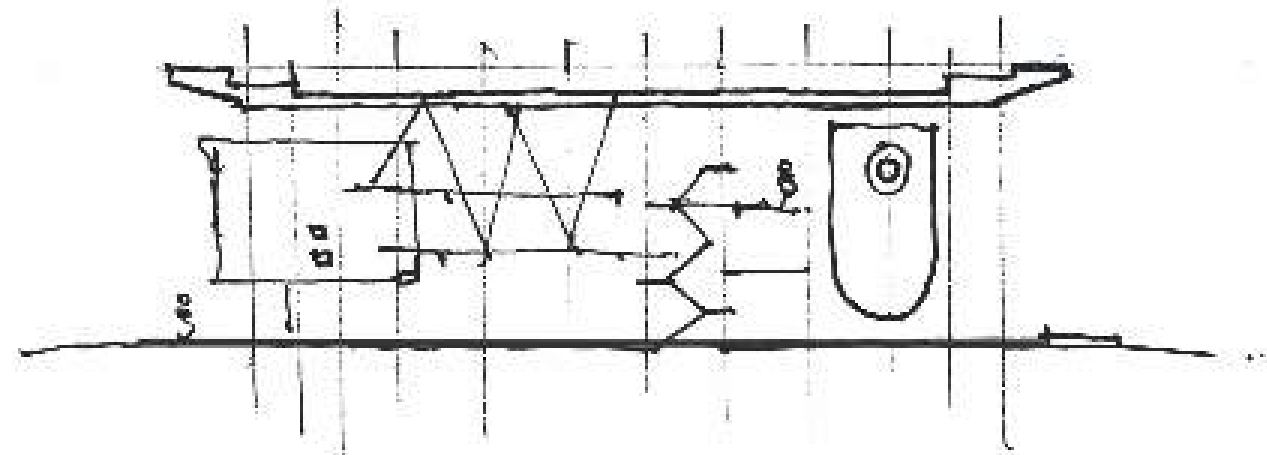


















END