

steel CONSTRUCTION

OFFICIAL JOURNAL OF THE SOUTHERN AFRICAN INSTITUTE OF STEEL CONSTRUCTION

Volume 40 No. 5 2016



CELEBRATING 60 YEARS OF THE SAISC



steel awards 2016

Winners and Entries

Main Sponsor



TWO IN ONE

DRILL + MITER SAW ALL PROFILES IN ONE MACHINE

HIGH SPEED CARBIDE DRILLING
MITER SAWING $\pm 30^\circ$



www.peddinghaus.com/za/xdm



PEDDI XDM-630
HIGH SPEED DRILL SAW COMBO

Another industry-first from Peddinghaus, the Peddi XDM-630 multi-spindle drill/saw combines carbide drilling, miter sawing, 4-axis scribing, tapping, countersinking and milling (slot and cope) in one machine. No operator intervention necessary to continually process 24"/600 mm parts on this productive, yet space-saving innovation. Utilizing ultra-modern "PeddiMatic" technology, the operator can monitor functions for loading, processing, offloading, trim cut and part removal.

Peddinghaus

www.peddinghaus.com | info@peddinghaus.com | +1 (815) 937-3800
For local sales and service contact Impact Machinery | +61 478 196 501



Front Cover:

Eastgate Phase 2 Refurbishment

Photo by Richard Sherman

PUBLISHED BY

Southern African Institute of
Steel Construction
1st Floor, Block C
43 Empire Road, Parktown West
P O Box 291724, Melville 2109
Tel +27 (0)11 726 6111
Fax +27 (0)11 482 9644
info@saisc.co.za
www.saisc.co.za

EDITOR

Denise Sherman
Tel +27 (0)11 726 6111
denise@saisc.co.za

ART DIRECTOR

Sandra Addinall
Tel +27 (0)11 868 3408
cbtdesign@adco.co.za

REPRO & PRINT

Camera Press
Tel +27 (0)11 334 3815

ADVERTISING

Viv van Zyl
Tel +27 (0)16 349 6839
Cell +27 (0)82 492 8603
Fax +27 (0)86 647 2788
viv@lantic.net

SOUTHERN AFRICAN INSTITUTE OF STEEL CONSTRUCTION (SAISC)

Chief Executive Officer

Paolo Trincheri
paolo@saisc.co.za

Technical Director

Amanuel Gebremeskel
amanuel@saisc.co.za

ISF Director

Neels van Niekerk
neels@isf.co.za

SASFA Director

John Barnard
john.barnard@saol.com

SAMCRA Director

Dennis White
dennis@saisc.co.za

POLASA

Kobus de Beer
kobus@saisc.co.za

Views expressed in articles and
advertisements are not necessarily the
views of the SAISC.

Articles or extracts thereof may be
reproduced provided that prior
permission is obtained from the publisher
and full acknowledgement is given.

CHANGES TO THE MAILING

LIST:

Please notify us of any changes to
the mailing list at info@saisc.co.za

SUBSCRIPTIONS:

To subscribe to Steel Construction
contact us at info@saisc.co.za

ANNUAL SUBSCRIPTION:

Please contact the SAISC at
info@saisc.co.za for rates

steel CONSTRUCTION

Volume 40 No. 5 2016

OFFICIAL JOURNAL OF THE SOUTHERN AFRICAN INSTITUTE OF STEEL CONSTRUCTION



in this issue...

SAISC COMMENT

Steel Awards 2016: Versatility, Diversity &
Innovation..... 2

STEEL AWARDS 2016

SAISC Honorary Member..... 4

Steel Awards 2016 Sponsors..... 6

Main Sponsor..... 7

Steel Construction through the ages... a trip down
memory lane..... 10

The Judges of Steel Awards 2016..... 14

Overall Winner..... 15

The Greater Good..... 21

Popular Vote Sponsor 22

Photo Competition 24

ASTPM Tubular Category Sponsor and
Nominations 31

GRS Metal Cladding Category Sponsor and
Nominations 39

Safintra Factory & Warehouse Category Sponsor
and Nominations 45

Commercial Architectural Category Nominations..... 53

Residential Architectural Category Nominations 60

Mining & Industrial Category Nominations 67

Saint-Gobain Light Steel Frame Sponsor and
Category Nominations..... 73

Partner Sponsors 88

SAISC NEWS

Membership list..... 94

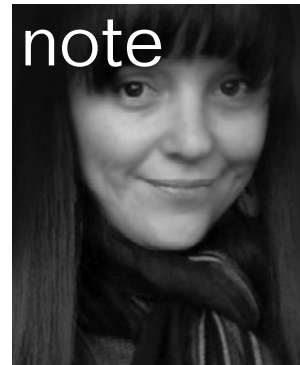
editor's note

If you've ever been to the SAISC's offices in the lead up to a Steel Awards event, you'll know that it's a flurry of activity. Making magic happen on the evening takes more than a generous sprinkling of pixie dust. It takes blood (paper cuts from flipping through reams of project entry forms), sweat (from running to catch flights home from site visits) and tears (of joy when the event runs smoothly). Congratulations to all project teams that entered into this year's awards. There may be only one overall winner, but the input from every team member on every project deserves a "well done"!

Every year we wrack our brains to come up with a fresh theme. This year we celebrate the SAISC's 60th year so we thought it would be fitting to go with a 60's theme. The 60's were a time of change. A transition period from the prim and proper 50's and a bridge to the wild and way out 70's.

I had a great deal of fun flipping through old Steel Construction Journals from the 1960s to 2016. The original 60s publication tagline was "The official organ of the South African Institute of Steel Construction". The quaint language use made me chuckle, but in some ways, I think it's quite an apt description. The SAISC is a vital organ in the sense that its function is to promote a healthy industry. The projects, project teams, companies and people we profile are the life blood of this industry.

Like the 60's we are again in a period of transition. I hope while you flip through the pages of this Steel Awards edition of the journal, that you will not only be left with a sense of nostalgia, but also a sense of hope for the future. A massive thank you to Sandra Addinall, David Stapleton and Viv van Zyl for your hard work and support. You made my first Steel Awards edition of the Journal memorable for the right reasons!



Join us on



and



<http://ow.ly/Kw0K303TZCH> <http://ow.ly/FFtP303TZLj>

Steel Awards 2016: Versatility, Diversity & Innovation

By Paolo Trinchero, Chief Executive Officer, SAISC



The quality of the entries improves each year and 2016 is no different. This year we had 46 entries reflecting steel as the material of choice and a signal that we can indeed speak fluent steel. Steel structures of all types are now readily achievable and due to the all-round efficiency and sustainability of the material, it's no wonder steel is being used more and more. This did however make judging very difficult as the projects were so diverse but we did our best to put them into meaningful categories.

What is encouraging is the broad range of projects from residential houses, to commercial projects, mining and industrial and some really innovative projects showing sustainability and innovation.

This bodes well for us as we need to ensure that we play in as many sectors of the South African and Southern African economies as possible.

This year a number of projects displayed characteristics of a winning industry. They showed innovation in every process and the integration of design, detailing, fabrication

and erection using modern CNC equipment and software which our industry has invested in so heavily.


The SAISC is passionate about training our next generation so we can continue to take advantage of opportunities in South and Southern Africa. We would like to see the industry working harder on integration and competitiveness as displayed by our winning entries.

I would like to thank the entrants which have made this event possible, the judges and the SAISC support team. Having had the privilege of attending most of the site visits and event meetings one realizes the amount of work that goes into making the steel awards such a successful event.

This year will be recorded as one of enormous challenge for our industry but as always we show that we are indeed men and women of steel. I would like to congratulate the winners and encourage our members to continue to participate and grow our industry into the future.

“What is **ENCOURAGING** is the broad range of **projects** from residential, to commercial projects, mining and industrial and some really **INNOVATIVE** projects showing **sustainability** and innovation.”





Total process optimization

Bob (35) knows the most efficient way to design, detail, and fabricate a steel structure. His company uses Tekla to automate detailing, fabrication and project management through interfacing with MIS systems and CNC machinery. What's more important, sharing the Tekla model allows all the project team members to stay in the building information loop real-time.

Contact **Cadex SA**
Tekla's Partner for
Sub-Saharan Africa
info@CadexSA.com
www.CadexSA.com

Tekla BIM (Building Information Modeling) software solutions provide a data-rich 3D environment that can be shared by contractors, structural engineers, architects, steel detailers and fabricators, and concrete detailers and manufacturers. Choose Tekla for the highest level of detail, accuracy, constructability and integration in project management and delivery. Visit our website to learn more about Tekla solutions and references.

> www.tekla.com

Trimble
Tekla[®]

SAISC HONORARY MEMBER

Tim Tasioulas



For his commitment and time invested in serving the steel construction industry, Tim Tasioulas, SAISC Board and Council Member has been awarded an Honorary Life Membership of the Southern African Institute of Steel Construction. Tim has always willingly given of his time and gone beyond the call of duty when it comes to imparting his knowledge and passion for steel to our New Generation Program students. We spent some time chatting to him about his business, what makes him tick, and what he values about the SAISC.

Q: Tell us a bit about the history of TASS

A: TASS Engineering was established by my father in 1968. He came over from Greece in the mid 60 with practically no money and started the business by making pool fencing and burglar bars. 48 Years later we are producing roughly 450 to 500 tonnes of steel per month.

Q: Was this your dream job when you were a kid?

A: No, it was never my dream job! I never foresaw myself making it into this industry. I studied industrial psychology and I thought I would end up working with people. That has given me a great advantage in this industry, to make sure that people are at their happiest when they are at work, and can produce to the best of their abilities.

RIGHT: Teacher and student. Spencer Erling and Tim Tasioulas.

Q: What do you enjoy most about your job?

A: I enjoy the challenges we take on, being able to build really amazing monuments and tackling new styles of building construction. I like to see the growth and development in people that have been with us for 40 to 50 years. We have people that started as workshop floor cleaners who now walk away as boilermakers. They've developed a career path and they've grown. That gives me a great deal of satisfaction.

Q: Who has been the biggest role model in your life? Why?

A: Without a doubt, my dad is my biggest role model. When he came here he had major language difficulties and no skills in our industry. He taught me never to give up in the face of adversity and to always strive to do your best.

In the steel industry, Spencer Erling has had the biggest impact on my life. His contribution to our industry is totally unparalleled. He's been a major role model and absolute king of our environment.

Q: What do you value most about the SAISC?

A: I see the institute as being the glue of our industry. They provide a lot of knowledge and information and serve as a massive educator in our industry. They are the voice piece in the market, lobbying government and making sure that they understand the difficulties that our industry is currently going through.

See <http://ow.ly/NJUA303PH9w> for a video interview with Tim Tasioulas.



I SEE THE INSTITUTE AS BEING THE GLUE OF OUR INDUSTRY...



ArcelorMittal



ThinkSteel

We are committed to sustainability

ArcelorMittal South Africa, the country's largest steel manufacturing company is constantly developing new technologies aimed at improving the sustainability of our products. We work in partnership with our customers and suppliers to achieve our environmental goals through innovation in steel solutions.

Scan here
to visit the
ArcelorMittal
South Africa
website



transforming**tomorrow**

www.arcelormittal.com/southafrica

Steel AWARDS 2016 SPONSORS:



MAIN SPONSOR:
BSi Steel



POPULAR VOTE SPONSOR:
Macsteel



PHOTO COMPETITION SPONSOR:
CADEX Systems SA



ASTPM TUBULAR CATEGORY SPONSOR:
Association of Steel Tube and Pipe Manufacturers



GRS METAL CLADDING CATEGORY SPONSOR:
Global Roofing Solutions



SAFINTRA FACTORY AND WAREHOUSE CATEGORY SPONSOR:
Safintra South Africa



SAINT-GOBAIN LIGHT STEEL FRAME CATEGORY SPONSOR:
Saint-Gobain Construction Products

PARTNER SPONSORS:



NJR Steel



Genrec Engineering



Aveng Steel



ArcelorMittal South Africa

BSi Steel

Main Sponsor

Steel Awards 2016

by Craig Parry, CEO of BSi Steel



Contact Details:

Keith Whiting

Tel: +27 (0)11 861 7603

Email: keith.whiting@bsisteel.com

Website: www.bsisteel.com

BSi Steel is a high energy, high performance company and is celebrating its 35th year in business. The steel industry is a fast-changing, dynamic environment that requires quick decisions, empowered people and integrated information systems. The BSi Steel team values creativity, hard work and a positive attitude. We employ only the best. Expectations of our people are high. Our actions, our systems and our people align toward an effortless, fast and exceptional experience for our customers.

We value the opportunity to partner with the SAISC in hosting the 2016 Steel Awards, which is the best show case of achievements of our industry, affirming that the steel industry delivers excellence and taking cognisance of fundamental role which the SAISC plays in the steel industry.

Our business units and trading styles

BSi Steel has two distinct trading styles. We have SA Trading, who do bulk loads to enterprise all over South Africa. Our Klipriver warehousing facility holds a vast stock range, which we draw on to service the general industry. Our KZN merchant branch services the "just in time," local market

whilst bulk loads are in transit from our main warehousing facility.

Our Exports team offer a turnkey solution to projects being implemented in other African countries by sourcing, transporting and delivering products directly to the project destination. Beyond South African borders, we have operations in Lusaka and Kitwe in Zambia as well as in Zimbabwe, which service their respective markets. We also have branches in Kolwezi and Lubumbashi in the DRC where we serve the mining industry.

Future focused

BSi Steel has participated in steel supply to a diverse range within the industry sectors, offering a varied landscape and with this brings a great appreciation for those engaged. We have felt a sense of pride and celebration when reviewing these projects with which we have been involved. An example would be the Solar power projects, like the De Aar project, it has been an exciting venture for us. Another area of focus and involvement at the moment is the automotive industry.

BSi Steel is on the right track. We know what we are and what we're good at. We'd like to be more visible in the market. Where do we want to be in 5 years' time? We don't want to be the biggest steel merchant in South Africa. We want to be nimble, effective and efficient. We'd like to partner with our clients throughout the value chain in terms of being their supplier of choice.

The ever challenging and changing landscape of the steel industry requires one to forge forward with determination, focus and persistence and to seek out and create opportunities. At the Steel Awards we hope to stop and reflect on the achievements of the steel industry and celebrate with those who have excelled in their areas of expertise.

For more on BSi visit <http://ow.ly/e5EK303PHjH>



BSI STEEL LTD. : COMPANY HISTORY FROM 1985 TO PRESENT DAY



YOUR PARTNER IN STEEL SOLUTIONS



35

YEARS OF
STEEL
TRADING

1985 -2016

BSi Steel offers a Steel Solution to your project or transaction, with the complete package of services;- Experienced & Knowledgeable traders and account managers, Stock Holdings, Processing, Logistics, Terms and Support from the outset of a project until its completion.



SA Trading
kalvin.clark@bsisteel.com

Keith.Whiting@bsisteel.com
shaun.roberts@bsisteel.com



PRODUCT FOCUS : AGRICULTURAL, AUTOMOTIVE, MANUFACTURING, MINING INFRASTRUCTURAL DEVELOPMENT

STEEL CONSTRUCTION

through the ages...

a trip down memory lane

The institute was founded on 24 March 1956 when South Africa was still a Union under the Nationalist Government. It was known as the Structural Steel Publicity and Advancement Association Limited.



The first meeting of the association took place on 12 September 1956 in Johannesburg in the Barclays Bank building which stood on the corner of Commissioner and Market Streets. The staff consisted of a single engineer offering his services on a part-time basis with a membership of 18 members.



1959

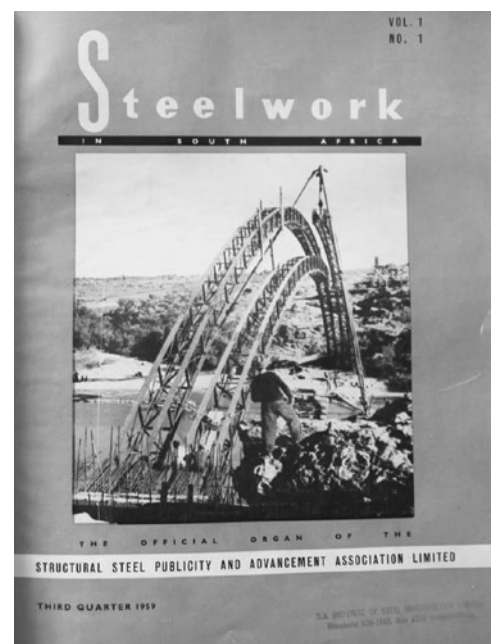
The first Steel Construction Journal is published.

1960

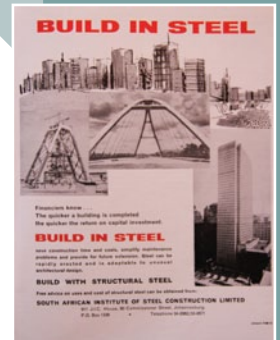
The institute employed an engineer, Mr Robert McHalfie-Clarke, on a part-time basis. Scottish and born in 1906 McHalfie-Clarke was a consulting engineer who specialised in structural steel design. Some of his structures including Iscor head office in Pretoria and Newcastle as well as the Norwich Union Building in Pretoria.

1976

Dr. Hennie de Clercq joins the SAISC as CEO.



The first Steel Awards ceremony takes place. Since inception it has recognised a broad range of projects that demonstrate excellence in the use of structural Steel.



1981	Entertainment Centre, Sun City
1982	Wayne Rubber Company Factory
1983	Menlyn Shopping Centre
1984	Durban Exhibition Centre
1985	22 Girtton Road, Parktown
1986	30 m Tactical Mast
1987	Amandelbult Mine Headgear
1988	Matimba Power Station
1989	Blue Route Mall, Tokai





STEEL AWARDS IN THE 90's

Steel Awards Overall Winners
in the 90's were:

- 1990 Moss gas Offshore Project
- 1991 East Rand Mall
- 1992 St Georges Park Cricket Pavillion, PE
- 1994 Madeba Wine Cellar, Robertson
- 1995 Sandton Library Atrium Roof
- 1996 Hartleyvale Hockey Stadium
- 1997 Eastgate, Harare – Zimbabwe
- 1998 Chicago Beach Tower Hotel, Dubai
- 1999 Volkswagen Piazza, Hatfield



THE SAISC IN THE 2000's

2000 - 2013

Hennie de Clercq returns to the SAISC as CEO.

2001 - 2016

Spencer Erling joins the SAISC as Technical and Education Director.

2007

The Institute launches SASFA, the Light Steel Frame Association of SA.
The SAISC School of Draughting opens its doors.

2012

The SAISC launches POLASA, the Powerline Association of SA.

2013

The SAISC launches SAMCRA, the SA Metal Cladding and Roofing Association.

In 2013 Paolo Trinchero was appointed CEO of the SAISC. Under his leadership, the institute continues to look after the interests of its 570 plus members, with commitment and passion.

The steel industry has a proud legacy. We've built iconic structures. We've seen giants rise and fall. We've weathered countless storms and come out strong. Yes, these are challenging times – but challenges are not new to us. Let's continue our legacy of overcoming, adapting and innovating. Let's equip the next generation to take our industry further and higher.



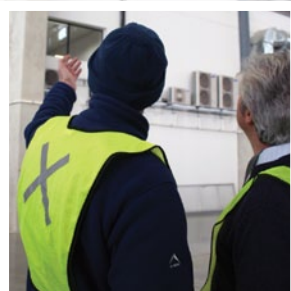
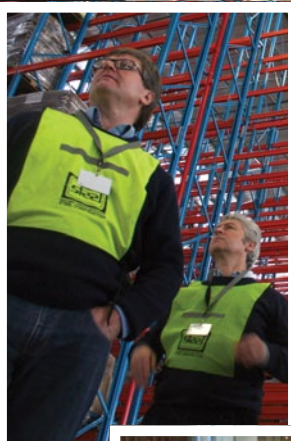
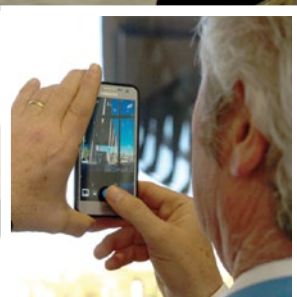
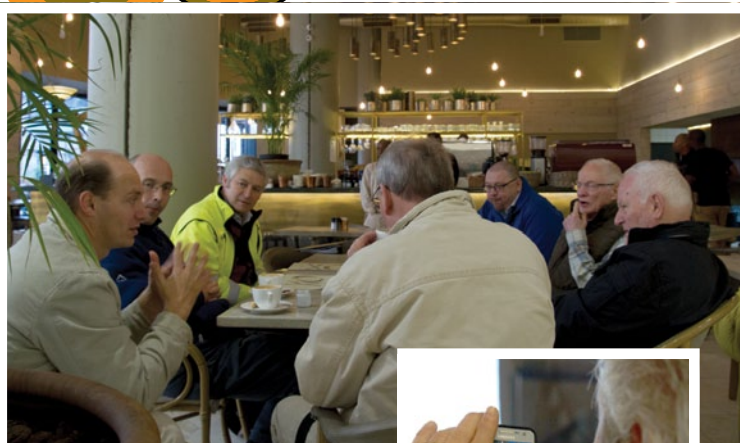
Steel Awards Winners to date in the 2000's are:

- 2000 JHB International Airport retail project
- 2001 Momentum Head Office, Pretoria
- 2002 Athlone Stadium Redevelopment
- 2003 Nelson Mandela Bridge/ Southern African Large Telescope
- 2004 Cape Town International Conference Centre
- 2005 Diamond Hill Toll Plaza
- 2006 Doha Khalifa Stadium
- 2007 Elphic Proome Architects Studio
- 2008 Maponya Mall
- 2009 Moses Mabida Stadium
- 2010 Cape Town Stadium
- 2011 Protea Court Roof Light
- 2012 Medupi Power Station Chimney Structural Steelwork
- 2013 Medupi Power Station, Main Frame and Boiler Grid supports
- 2014 The Malapa Excavation Site
- 2015 SKA Africa Radio Antenna Positioner Back Up Structure

We are problem solvers.
We are History makers.
We are Men and Women of Steel.

For more SAIISC news visit <http://ow.ly/MijZu303PmL7>

THE Judges OF STEEL AWARDS 2016



Friedrich Strey of Strey Architects representing the SA Institute of Architects (SAIA)

Louis Breckenridge, Executive Director and representing the Constructional Engineering Association (CEA)

Franco Mordini of Macsteel Tube and Pipe representing the Association of Steel Tube and Pipe Manufacturers of SA (ASTPM)

Joban Nel of the SA Institute of Steel and Iron (SAISI)

Dennis Nash, retired and part-time consultant for Aurecon representing the Joint Structural Division (JSD)

Professor Alex Elvin, School of Civil and Environmental Engineering, University of the Witwatersrand (WITS)

John Barnard, Director and observer on behalf of the Southern African Light Steel Frame Association (SASFA)

Dennis White, Director and observer on behalf of the Southern African Metal Cladding and Roofing Association (SAMCRA)

Paolo Trincherio, CEO of the Southern African Institute of Steel Construction and key convener of the judges

Spencer Erling, retired SAISC Director and expert Steel Awards consultant

Denise Sherman, Steel Construction Journal Editor, Judge Herder and Cattle Prod Wielder



STEEL AWARDS 2016 ENTRIES

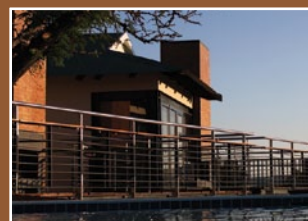
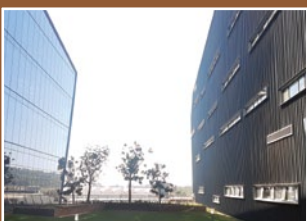
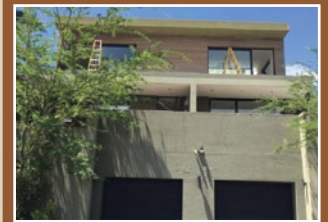
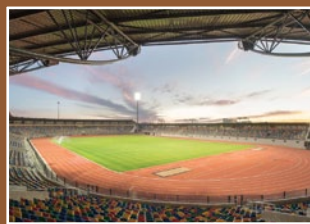


PHOTO COMPETITION WINNER: MALL OF AFRICA

EASTGATE REFURBISHMENT PHASE 2

JUDGE'S COMMENT: "I've sent students there. I've seen the drawings. I just think that what they've achieved in a working shopping centre, that's absolutely changed the mall totally, is really a fantastic piece of engineering work." – Spencer Erling

For a video case study of this project visit <http://ow.ly/J9aM303P1gR>





“Underpinning of the foundations was undertaken by literally ‘mining’ under the existing lower level suspended slabs and installing ‘mini precast piles’ which in itself is unusual and seldom seen.”

The phase 2 redevelopment at Eastgate Shopping Centre encompasses a number of new structures to give the centre a major facelift. The primary change is the relocation of the lower level cinema complex onto a section of the roof-level car park, enabling more retail space at the lower level plus incorporating substantial additional retail space within the new cinema complex at roof level.

Steelwork was used on the project in numerous structures. These ranged from small shelters to a 5 000m² cinema complex. The main structures were as follows:

1) *Cinemas:* The redevelopment

necessitated that new, state of the art cinemas be built over the roof of the existing shopping centre. Due to weight limitations, in order to reduce the extent of underpinning required, and to limit disturbances to the live shopping centre below, a steel structure was the only choice. This consisted of a lower retail slab, a cinema foyer slab over, projection rooms and a curved steel roof. The slabs were made up of steel beams and concrete infilled Bond-Dek slabs. Internal walls consisted of lightweight, acoustic materials on steel frameworks.

Due to the high visibility of the building, great care was given to the

aesthetics. The building form consisted of scalloped segments with sloped Kingspan side cladding and aluminium roof sheeting.

- 2) *Entrance canopies:* Two feature entrance canopies were introduced, both consisting of 13m cantilevers. One was 17m high with steel and glass retail structures below. The other was 9m high and required 20m long tie backs to span mall areas below.
- 3) *A new central court roof feature was added:* This comprised a tubular structure with ETFE cladding. Surround structures needed to be designed to cater for the interfaces to the existing



building, as well as to incorporate new steel lift shafts.

- 4) *A feature signage wall, and various infill slabs* were some of the other main structures.

What is special about this project goes hand in hand with why steelwork was chosen as the main structural component in its design.

Building a major 5 000m² structure such as this one on a suspended concrete carpark slab over two levels of retail space and keeping the entire shopping centre operational in the process is no mean feat both from a design and a construction point of view.

Underpinning of the foundations was undertaken by literally “mining” under the existing lower level suspended slabs and installing “mini precast piles” which in itself is unusual and seldom seen.

Special considerations such as the design process, fabrication, transport and erection

Special consideration had to be given to access to the workface for the installation of most of the steelwork.

The loading limitation on the rooftop carpark slab was only 2.0kPa with the maximum vehicle weight limited to 5 000kg's.

The tower crane that was installed by the main contractor on the site covered only 60% of the rooftop cinema complex area and had limited load capacity at radius.

A number of the internal structures were designed with plate web girders spanning in excess of fifteen metres which had to be manhandled into position and hoisted by scaffold tower and chain blocks.

Challenges and solutions

The major challenge was as noted above being the access to the workface for the installation of the steelwork.

Loads of up to 3.5 tonnes and lengths of over 18.0 metres had to be trolleyed / manhandled through and around the cinema structure to then be hoisted to final level by building high scaffold towers over them and pulling them up with suitable capacity chain blocks, an extremely time consuming and expensive means of erection.

Cost saving solutions

Connection design, particularly between the numerous beams throughout the lower levels of the cinema complex and all the Bondek slab support beams was a major cost saving item from a fabrication point of view.

Minimal, if any, welding was employed, rather opting for bolted connections with back to back angles bolted through the incoming beam webs to achieve all end plate connection details.

The Eastgate Phase 2 redevelopment project is an extremely complex steelwork structure due to it being a very large cinema complex on top of an existing rooftop carpark slab.

PROJECT TEAM

Client / Owner / Developer:

Liberty Life

Architect:

Batley & Partners

Structural Engineer:

Aurecon Group

Quantity Surveyor:

NWS Quantity Surveyors

Project Manager:

Focus Project Management

Main Contractor:

Stefanutti Stocks Building Gauteng

Steelwork Contractor and Nominator:

Tass Engineering (Pty) Ltd –
robert@tasseng.co.za

Structural Steel Detailer / Detailing

Company:

3DStruct

Erector:

On Par Erection Works

Metal Roofing and Bond-Dek Supplier:

Global Roofing Solutions

Bond-Dek & Shear Stud Installation:

Builcon

Roofing and Cladding Contractor:

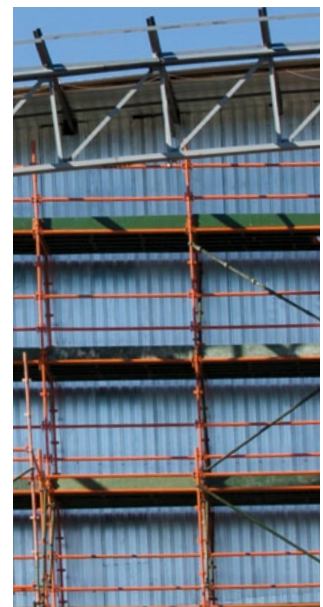
Chartwell Roofing

Photographer (photo competition):

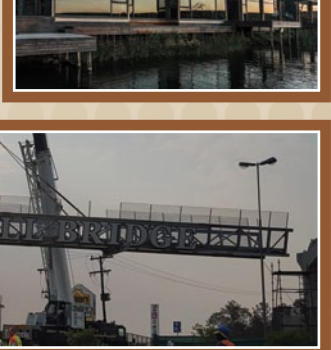
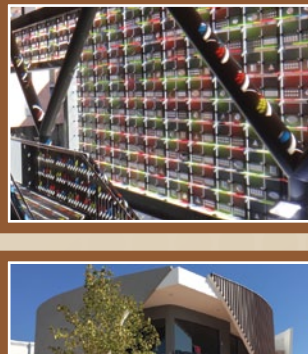
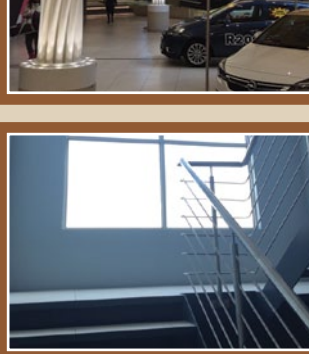
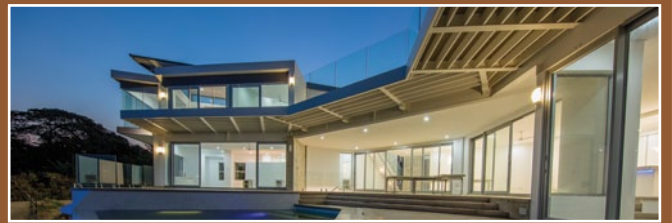
Mike Bagley, Megapix Digital

What makes this entry special or different to other entries?

Within excess of 13 000 components in the cinemas alone, many of which were added after the main supporting structure had been erected, it proved to be a hugely challenging project to erect and a one of a kind not often seen in the industry.



STEEL AWARDS 2016 ENTRIES



TASS

ENGINEERING (PTY) LTD

**Our steel is building the nation.
Our quality is building our reputation.**

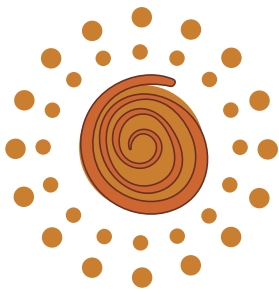
TASS Engineering has been actively involved in structural and architectural steel fabrication and erection for more than four decades.

Current projects:

- BMW New Facilities Body in White (550t) - BMW SA
- Eastgate Refurbishment (1 600t) - Liberty Properties
- Menlyn Maine Central Square (250t) - Menlyn Maine Investment Holdings
- South African Breweries, Conveyors, Buildings, Stairs - SAB Alrode and SAB Chamdor Brewhouse (350t)
- Gautrain O.R. Tambo Platform Extension (100t) - Gauteng Provincial Government
- Rosebank Towers (130t) - Abland
- Natalspruit Hospital: Bridge and Doctors & Nurses Accommodation (250t) - Department of Infrastructure and Development
- Government Printing Works (300t)
- Discovery Sandton (220t) - Zenprop
- Integrated Rapid Public Transport Network (200t) - Ekurhuleni Metropolitan Council
- Golden Era Can Line Plant (525t) - Golden Era Group
- EPX Warehouse (225t) - EPX
- Northgate PV Support Structure/Car Ports (100t) - Sasol Pension Fund
- Aeroton Roof Jack (3 800m²) - Capital Property Fund
- Fourways Mall Roof Structure (60t) - Fourways Precinct
- Discovery Corporate Offices Sandton, Skylight Roof (50t) - Growthpoint Properties
- Lusaka Health Centre - Shimizu Corporation
- Fourways Mall Link Bridges and Ramps (75t) - Fourways Precinct
- Menlyn Maine Hotel (30t) - Menlyn Maine Hotel Trust



Contact details: Tel +27 (11) 975 0647 • Fax +27 (11) 970 1694 • E-mail tasseng@mweb.co.za



THE GREATER GOOD



eMalahleni Outreach

When a major steel mill closed down in February 2016 more than 2000 workers of all races lost their jobs.

The steel industry still feels the shock, but the 'Witbank' community is *reeling*: bread-winners are in despair – schools do not get fees – churches lose members and stop funding social services – shops close down – domestic workers lose their jobs... It cuts so deep.

Funds raised at the dinner in Gauteng will buy:

- Non-perishable food parcels to help those affected (as many as we can!)
- Essential toiletry sets for the students of the Ogies Combined School.

Any remaining balance will be donated to CMR Mpumalanga (Social Services), – cmr@xsinet.co.za



The QuadPara Association of KwaZulu-Natal

Providing services *FOR* persons with disabilities,
BY persons with disabilities

This is a core purpose of the newly built Victor Daitz Capacity Building & Care Centre of QuadPara KZN.

Funds raised at the dinner in Durban will go towards equipment for the incredibly comprehensive development and mentorship programme for persons in wheelchairs, including communication skills, fitness and also management of self, money, business, home, transport and relationships.

www.qak.org.za
031 701 7444 /qan@mweb.co.za
(NPO: 004-338)



The winners of the lucky draw at each table will be the new owner of the centre-piece decorations consisting of a big balloon vase and a 'Beetle', handcrafted from steel wire and beads by a Johannesburg-based artist called Gift.

Enquiries:
Call Marlé Lötter
at SAISC



The Bumble Bee Fund

FLYING AGAINST THE ODDS

Science can still not explain how such tiny wings can make a bumble bee fly – AND YET IT DOES! This fund gives 'wings' to children who are stuck with serious mobility impairment through the provision of specialised mobility aids.

With the contributions received from our guests at the Cape Town dinner, we hope to buy a special new wheel chair for Eldino Lambrecht (9) –

one that is big enough AND does not fall apart all the time! Eldino became a paraplegic at five months of age when a knife, aimed at his father, struck his own spine. His father died and his mother could not cope, so he lives with an aunt in a township. *Eldino has surely been fighting the odds for all his life!*

Tel: 082 451 6433 /
www.bumblebeefund.co.za
NPO: 095-520





Popular Vote Sponsor

Contact:

Dave Dawkshas, Group Executive:
Marketing and Sales
Telephone: +27 (0)11 871 000
Fax: +27 (0)11 823 3860
Email: info@macsteel.co.za
PO Box 7729, Johannesburg, 2000
7 Brook Road, Lillianton, Boksburg

With a proud history spanning more than 112 years, Macsteel Service Centres SA continues to develop and expand, reinforcing its position as the leading merchandiser and distributor of steel and value added steel products in Africa. Consisting of 8 dynamic Business Units and operating from a network of 70 service centres, branches and warehouses, Macsteel supplies the entire Sub Saharan geographic region with the full range of carbon steel, special steel, stainless steel, aluminium products and value added steel processes to all sectors of industry.

Macsteel's extensive stockholding, comprehensive product range and superb infrastructure combined with its technical competencies and continuous improvement initiatives, enhances its status as the preeminent supplier of steel products to a vast customer base bearing testimony to their unwavering confidence in the future of the steel industry in South Africa and Africa as a whole.

Macsteel invites you to test their mettle and forge an enduring partnership with them as your preferred steel supplier of choice!

MC/ ENTERTAINMENT GAUTENG

Master of Ceremonies and Comedian

Al Prodgers

A stand-up comedian who has entertained audiences around the world with his proudly South African sense of humour. Al has been praised by The Times newspaper of London and attacked by a penguin in Port Elizabeth. He is a man who reminds us never to take life too seriously, but will still handle every MC task while respecting client demands.

Contact:

Paul at Unique Speaker Bureau
+27 (011) 465 4410
+27 083 268 6057
paul@uniquespeakerbureau.com





 **PROTECTIVE COATINGS**

CORROSION PROTECTION

Plascon Protective Coatings mitigate the harmful effects of corrosion to your asset. Speak to our dedicated technical support and specifications team about your protection needs




**KANSAI
PLASCON**

Contact our Plascon Advisory Service on 0860 20 40 60
or visit the website www.plascon-industrial.co.za



PHOTO COMPETITION SPONSOR Cadex Systems SA



Contact: John Swallow or John Duncan
 Tel: +27 (0)11 463 1857/ 3641
 Fax: +27 (0)11 463 9445
 Email: info@cadexsa.com
 PO Box 411340, Craighall, 2024, South Africa
 First Floor, Block D, Coachmans Crossing
 Office Park, 4 Brian Street, Lyme Park, 2191,
 Bryanston, Sandton
 Website: www.cadexsa.com

Cadex Systems SA supplies and fully support Tekla Structures, the leading 3D Building Information Modelling tool for structures. Our ambition is to multiply users' potential to think and achieve big. We want to improve our customers' businesses.

We put models at the core of construction processes. Tekla Structures is the innovative 3D BIM solution that facilitates accurate design, detailing and management of intelligent structural and building models of any size or complexity with ease and precision. The tools cover all materials and the entire structural design process. Tekla's intelligent models integrate the entire structural project workflow from sales and the initial bid, through detailing, fabrication and erection, to asset management.

It is the most advanced and integrated way to manage the shop-detailing, fabrication and erection of all steel structures. Tekla Structures is a model based system that reduces errors, increases productivity, and provides the highest levels of automation of fabrication and project management by interfacing with the MIS and CNC machinery.

Tekla Structures BIM software provides an accurate, detailed and data rich 3D environment that can be shared by structural engineers, architects, concrete rebar detailers, steel detailers, project managers and clients. At every stage the detailed models enable the highest level of constructability and production control.

The Software Maintenance Agreement benefits users by providing them with the support, upgrades, and fast, efficient help when required. Local first level technical support is provided by experienced professionals with years of industry experience, who assist all levels of users. Users on maintenance get access to the Tekla User Account. This includes online help, an experienced and helpful online user community, the Tekla Warehouse and access to the latest software releases.

Cadex SA, Tekla's regional reseller, brings more than 60 years of experience in the Southern African steel construction industry to their clients.

Visit www.tekla.com for details about more configurations and tools.

PHOTO COMPETITION ENTRIES

- | | | |
|---|--|---|
| 1. Venetia Underground Project | 16. Maerua Mall Joyful Noise | 31. Waterfall City Bridge |
| 2. Cipla Distribution Gateway | 17. Siteform New Office | 32. The Barn House |
| 3. Caluza Sports Hall | 18. Dabmar Manufacturing Plant | 33. St Johann |
| 4. Saldanha LPG Bullets | 19. Seisa Ramabodu Stadium | 34. Tree House Constantia |
| 5. Gordon Road Girls' School Learner Support Centre | 20. Aeroton Roofjack Project | 35. Sol Plaatjie Dynamic Sunscreen |
| 6. Hammersdale Container Trader's Shelters | 21. Midax House, Zinkwazi Beach | 36. Third Story Addition - Parkhurst |
| 7. Kusile/Medupi Power Station - Gratings and Handrails | 22. Icon Building Stellenbosch Square | 37. Sumitomo Rubber SA |
| 8. Temporary OPD Unit at Swaziland Government Hospital, Mbabane | 23. New Distribution Centre for Mr Price | 38. Celrose Warehouse |
| 9. Afriski Backpackers | 24. Husab Uranium Stockpile - Winner | 39. Stats SA |
| 10. Grey College Jock Meiring Science Centre | 25. House Bluecrane | 40. Greenachres Shopping Centre Entrance Canopy |
| 11. Create Café | 26. Mall of Africa, LSF Façade and Parapet Walls | 41. Eastgate Refurbishment Phase 2 |
| 12. East Rand Mall Tornado | 27. Mopani Copper Mines PLC - Synchlinorium Headgear | 42. Cosmo Mall Bridge |
| 13. Takealot | 28. Bullfrog Pan | 43. Rivers Church Auditorium - Spiral Ramp Structures |
| 14. Mall of Africa Central Skylight | 29. KPMG Campus Phase 3 - Structural Steel Feature Trees | 44. Old Apostolic Church - Ironsyde, JHB |
| 15. Rodenbeck Fire Station | 30. Zimbi Lodge | 45. Waterfall Wilds Retail Centre |
| | | 46. Old Apostolic Church - Mayfield, JHB |

THAT FEELING...

...it's Friday, you've worked hours to get the design, drawings & schedules out. There are still late changes to make, rebar clashes are certain, and the project team are meeting the client about more changes. You still need quantities, to model and schedule the rebar. The design team want your model. The contractor needs to plan the project, design & manage formwork, plan the rebar delivery...

The week is finished, you're finished, the work is far from finished. If only you could have solved the problems ahead of time. The guys on site will just have to make it work...

NEXT TIME USE TEKLA SOFTWARE – IF YOU DON'T SOMEONE ELSE WILL...



Create accurate, constructable concrete & rebar models in the design office using Tekla. It's fast, really fast! It's powerful, really powerful! Solve problems in the office long before someone on site has to. Find clashes. Be smart, collaborate. Share the accurate Tekla BIM model. Contractors can use Tekla for planning, for safety, for rebar delivery, for formwork & more. The Tekla BIM benefits the whole professional team. Tekla's Model, Plan, Pour tools for concrete & rebar benefit the entire project.

www.tekla.com

Contact **Cadex SA**
Tekla's Partner
info@CadexSA.com
www.CadexSA.com

Trimble
Tekla[®]

STEEL AWARDS 2016



PHOTO COMPETITION ENTRIES

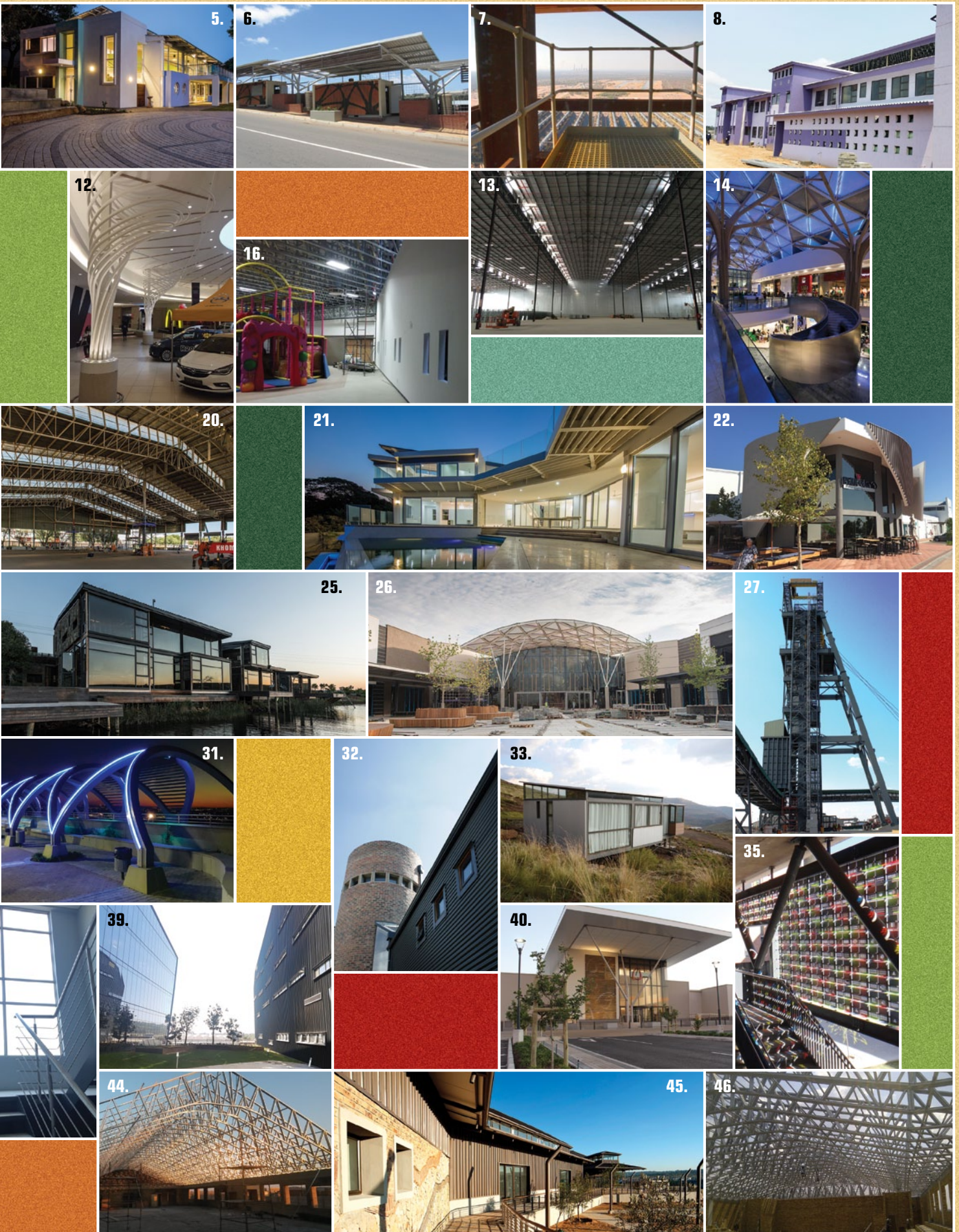
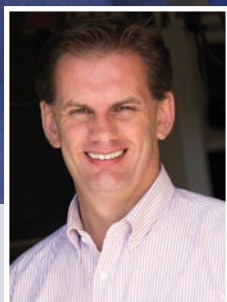


PHOTO COMPETITION WINNER: MALL OF AFRICA

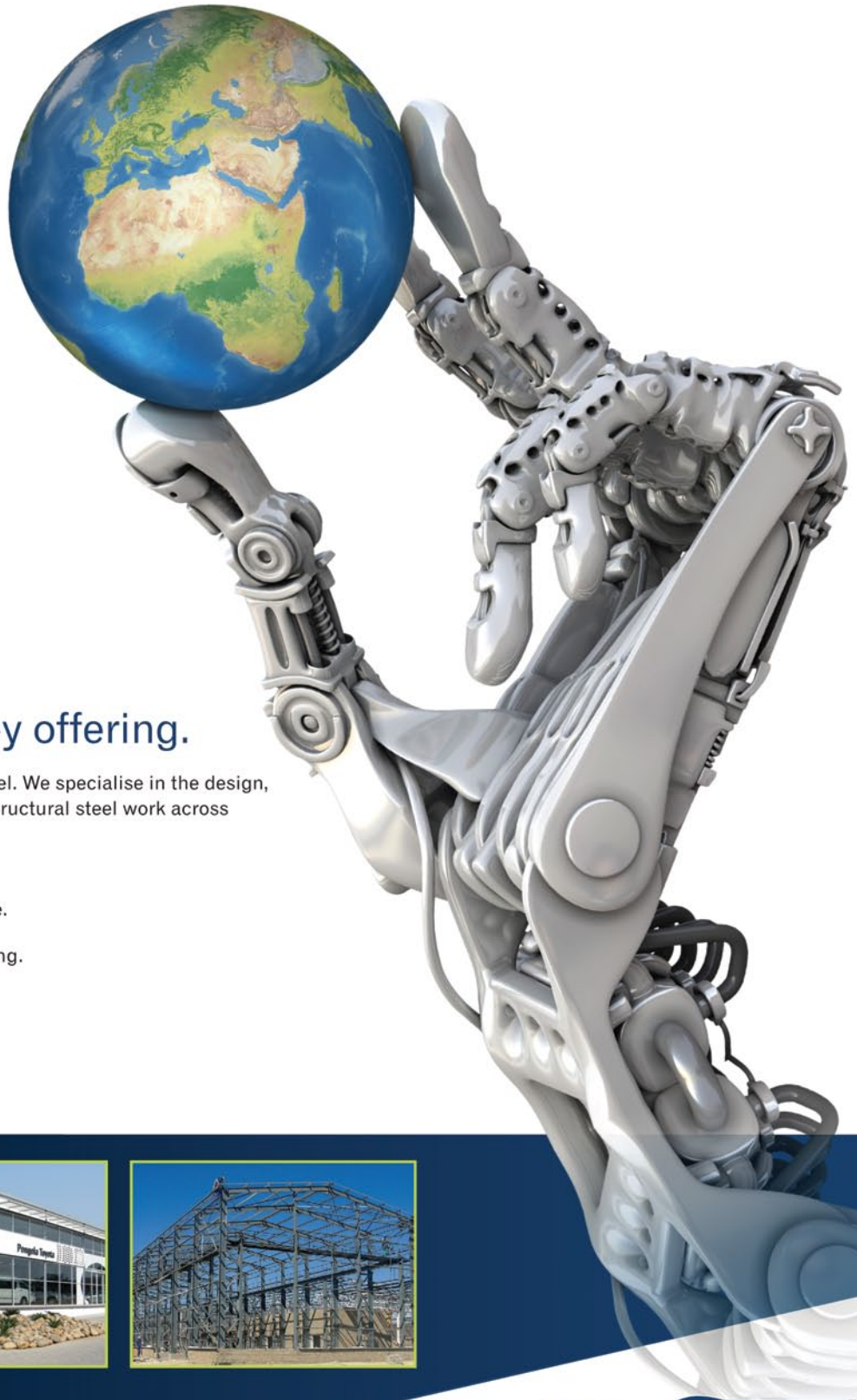
Photographer: Michael Tree, info@michaeltree.com



Michael's natural ability to work with a wide base of professionals stems from a 15-year career in the corporate banking sector. He is now widely accepted as being one of Johannesburg's most experienced, acclaimed and professional photographers.

He has developed a key skill in understanding the reality which is so critically required by architects and developers to depict their constructions in a photographic medium, as they stand.

SIGNIFICANT CAPABILITY. EXTENSIVE REACH.



The complete turnkey offering.

At **B&T Steel*** we are passionate about steel. We specialise in the design, detailing, manufacture and erection of all structural steel work across South Africa and sub-Saharan Africa.

At B&T we pride ourselves in our:

- World-class quality and excellent service.
- Technical team to assist at all times.
- Design and detailing using 3D modelling.
- Blasting and painting facilities.
- Own transport fleet.
- Operations - local and cross border.
- ISO accreditation.



B&T Steel. A unique approach to steel.



* B&T is fully BEE compliant and a member of the South African Institute of Steel Construction (SAISC), the International Steel Fabricators Council (ISF) and the Gauteng Master Builder Association.

Telephone: 013 665 1914/1966 | **Facsimile:** 013 665 1881 | **Email:** info@btsteel.co.za

www.btsteel.co.za

REGIONAL WINNER, KWAZULU-NATAL: HOUSE BLUECRANE

Photographer: Roger Jardine, hello@rogerjardine.co.za

HOUSE BLUECRANE



REGIONAL WINNER, WESTERN CAPE: SALDANHA LPG BULLET

Photographer: Lindsey Appolis, lindsey@appolis.co.za

SALDANHA LPG BULLET



ASTPM TUBULAR CATEGORY

ASTPM TUBULAR CATEGORY WINNER:

SEISA RAMABODU STADIUM



Our grateful thanks go out to the Association of Steel Tube and Pipe Manufacturers for their ongoing support of our Steel Awards projects.

The Association of Steel Tube and Pipe Manufacturers of South Africa

Contact: Tiana Ferreira
Tel: +27 (0)11 726 6111
Fax: +27 (0)11 482 9644
Address: 1st Floor, Block C, 43 Empire Road, Parktown West
Email: info@saisc.co.za
Website: www.astpm.com

The Association of Steel Tube and Pipe Manufacturers of South Africa (ASTPM) was formed in 1983 to represent the welded carbon steel tube and pipe producers. The members account for over 70% of the installed capacity. Details, product range and all other relevant information are available on our website, www.astpm.com.

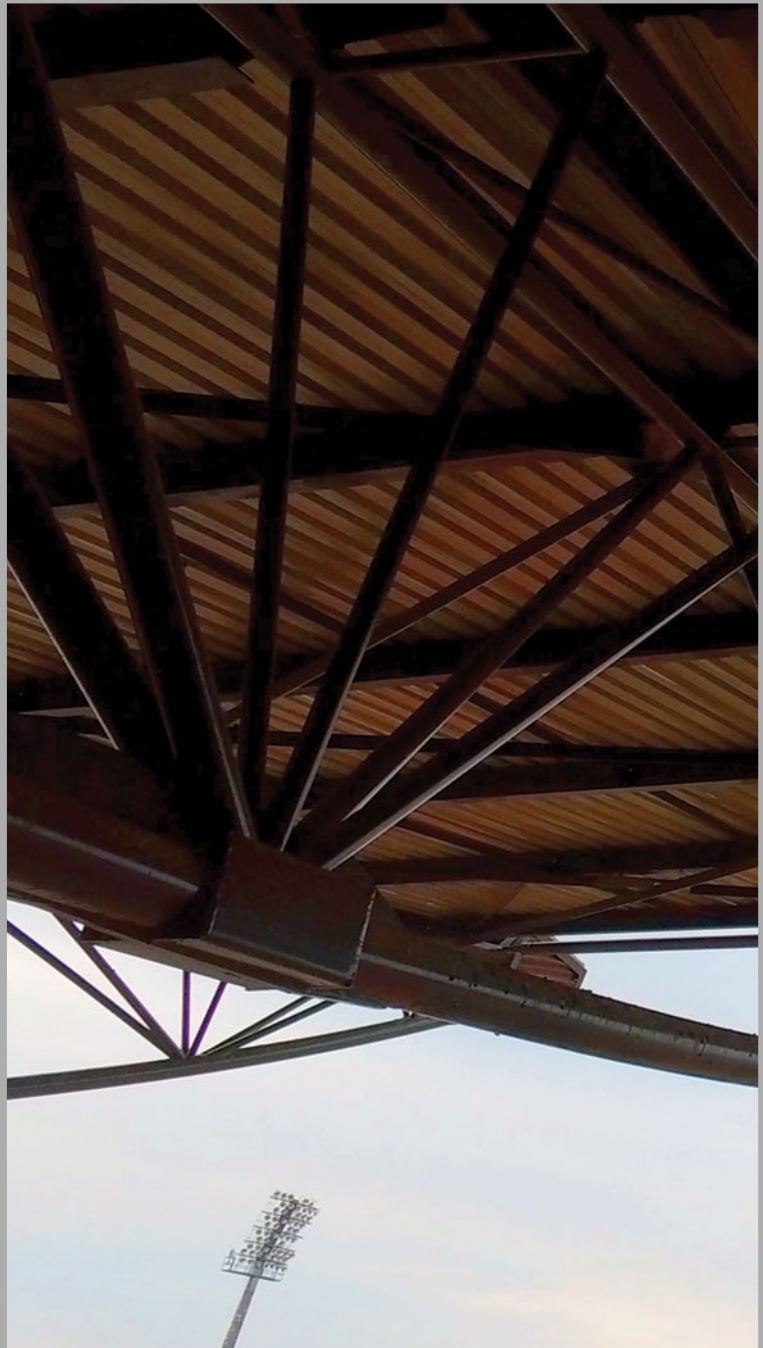
During the 32 years existence of the Association, the members have loyally supported the local market and have also exported in excess of 1.5 million tonnes of tube and pipe to over 50 countries. This has only been achieved due to the top quality product that these members produce, which is in compliance with both local and international specifications.

The Association continues to promote the use of tube and is active in ensuring that local standards are maintained and where necessary, improved, to meet local and international requirements.

The introduction of the standard Grade S355 Structural Tubing (launched in 2010) now provides a lighter and stronger steel solution to the structural steel industry and compliments the inherent benefit of tubular steel. Its success is proven by ever growing sales in S355 tube.

Our members continue to invest in this industry and are expanding in value added machinery that includes plasma and laser cutting technology. These products are now more user-friendly especially with the connections that save time and labour costs for the fabricators and erectors, enabling them to pass the savings on to their customers.

The ASTPM is pleased to be able to continue their sponsorship of this worthy award, both now and into the future, and wishes the SAISC every success for this flagship event.





SEISA RAMABODU STADIUM

WINNER OF THE ASTPM TUBULAR CATEGORY

When interviewed regarding this project, the first aspect architect Aadil Bham commented on was the professional and excellent manner in which the team collaborated while executing this project. "All contractors and sub-contractors really came together well to give us a good final product," says Bham.

The project came about from a collaboration between the Mangaung Municipality and the Freestate Department of Sports, Arts, Culture and Recreation, and the Department of Public Works. They identified this site as a priority

JUDGE'S COMMENT:

"The Stadium is a well-balanced and aesthetically pleasing structure. One of the really clever aspects is that it uses a double chord with a compression member where the loads are high, and converges into one chord where the loads are low. Another interesting aspect is the use of circular hollow section girts to the facias, which eliminates the use of a complicated sag system."

– Franco Mordini, ASTPM



for development within the municipality and developed a wishlist in terms of what they wanted to achieve. Their main priority was the upliftment of the sports offering from this facility, bringing it to a contemporary standard. They also wanted to create a facility that provided a quality experience to the community, with soccer being such a loved sport in the area.

The structural frame of Seisa Ramabodu Stadium consists of main raker beams, frames or columns which are founded on solid rock, with seating panels and a box gutter frame bolted to a structure cast into the concrete, carrying a cantilevered roof.

The cantilevered roof spans about 30m and consists of triangular trusses, constructed from circular hollow sections. The trusses vary from 2m at the back to 500mm at the nose cone, with a curved bottom member. It has IPE profile purlins that span 9m (more or less the span of the raker beams) with curved cladding rails fixed to the back of the concrete frames, which carry the circular purlins that support the curved cladding.

The main challenge was casting in the structure that carries the gutter boxes at the back. This

resulted in variable items, and the need to align trusses in order to create an even visual line, which contributes to the aesthetic of the stadium. Between the engineer, contractor and architect a 3 member connection was designed to solve this challenge. All aspects were surveyed, and each section had its own cleat made to align the trusses and achieve an even visual alignment.

For a video case study of this project visit <http://ow.ly/VjyN303PJvg>

PROJECT TEAM

Client / Owner / Developer:

Mangaung Municipality

Architect:

Urban Edge Architects

Structural Engineer:

AECOM

Project Manager, Main Contractor & Quantity

Surveyor:

WBHO

Structural Steel Detailer / Detailing Company:

Construct Steelwork Detailing

Cladding Supplier:

Tate & Nicholson

Steelwork Contractor and Nominator:

BRD Construction – francois@brdk.co.za



BRD
GROUP

Strong. Safe. Purpose-built. Elegant.

**Specialised, large-scale
steel construction services that
set the industry standard.**

BRD Steel Construction has a rich history dating back more than three decades. The original family business was built on trust and more than 30 years later, BRD is still focused on instilling absolute trust. Today, BRD provides specialised steel construction services to some of the top contractors in South Africa. Projects amount to a total of 2000 tonnes per year which include schools, shopping malls, large-scale roof constructions and warehouses.

**"Whatever structure is
required, it is backed by
BRD's backbone of
absolute trust."**

T: +27 (0) 51 434 1238
info@brdgroup.co.za
www.brdgroup.co.za

**STEEL CONSTRUCTION, CRANE HIRE
& FORKLIFT SALES**

ABSOLUTE TRUST

PROJECT TEAM

Client / Owner / Developer:

Afterbury Waterfall Investment Company (Pty) Ltd

Architect:

Margoles Dukes & Smith Architecture

Structural Engineer:

Novum Holding LLC (South Africa)

Quantity Surveyor:

Norval Wentzel Steinberg (Pty) Ltd

Project Manager:

GHC Africa Project Management (Pty) Ltd

Main Contractor:

Mall of Africa JV – WBHO / Group Five

Steelwork Contractors:

Novum Holding LLC (South Africa)

Tass Engineering (Pty) Ltd

Painting:

Hendor Corrosion Protection Services

Erectors:

Tass Engineering (Pty) Ltd and Universal Steel

Construction (Pty) Ltd

Structural Steel Detailer / Detailing Company:

Novum Holding LLC (South Africa)

Cladding Supplier:

Novum Holding LLC (South Africa)



MALL OF AFRICA CENTRAL SKYLIGHT

Photographer (photo competition): Barry Goldman, Barry Goldman cc

PROJECT TEAM

Client / Owner / Developer:

Economic Development Unit, Ethekwini Municipality

Architect and Nominator:

Architecture Department, Ethekwini Municipality –
adrian.govindsamy@durban.gov

Structural Engineer:

Architecture Department, Ethekwini Municipality

Quantity Surveyor:

Architecture Department, Ethekwini Municipality

Project Manager:

Architecture Department, Ethekwini Municipality

Main Contractor:

Junev Construction

Steelwork Contractor:

STS Steel Projects

Structural Steel Detailer / Detailing Company:

Scott Mac Millan

Cladding Supplier:

Junev Construction

Electrical Engineer:

Architecture Department, Ethekwini Municipality



HAMMERSDALE CONTAINER TRADER'S SHELTERS

Photographer (photo competition): Adrian Govindsamy, Architecture Department, Ethekwini Municipality

PROJECT TEAM

Client / Owner / Developer:
Redefine and Vukile Property Fund

Architect:
MDS

Structural Engineer:
Sutherland

Quantity Surveyor:
NWS

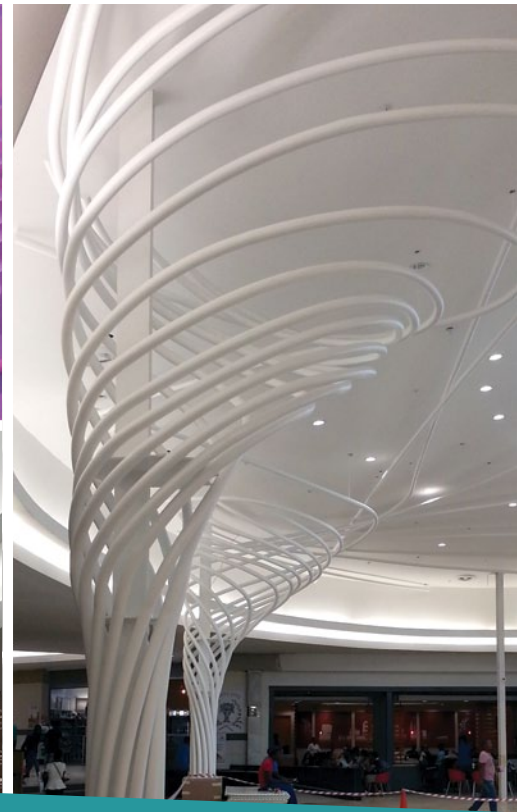
Project Manager:
SIP

Main Contractor:
NMC

Steelwork Contractor and Nominator:
Cadcon (Pty) Ltd – richbutler@cadcon.co.za

Structural Steel Detailer / Detailing Company:
DN Design

Paintwork:
Dram Industrial Painters



EAST RAND MALL TORNADO

Tubular steel – functional, yet aesthetically pleasing A 21st Century Solution



Members

African Pipe Industries | ArcelorMittal SA Seamless Tube Division | Augusta Steel | Barnes Tubing Industries | Group Five Pipe
Hall Longmore | Honingcraft | Macsteel Tube & Pipe | New Concept Mining | Pro Roof Steel Merchants

Tel: +27 11 726 6111 Email: astpm@astpm.com Website: www.astpm.com

PROJECT TEAM

Client / Owner / Developer:

Old Mutual Property

Architects:

Impendulo Design Architects

Structural Engineer:

Consultauri Design (Pty) Ltd

Structural Engineer:

Ndodana Consulting Engineers (Pty) Ltd

Quantity Surveyor:

Aecom SA (Pty) Ltd

Main Contractor:

Trencon Construction (Pty) Ltd

Steelwork Contractor:

Spiral Engineering cc

Structural Steel Detailer / Detailing Company:

Spiral Engineering cc

Painting:

Tasene Painters



KPMG CAMPUS PHASE 3 – STRUCTURAL STEEL FEATURE TREES

Photographer (photo competition): Annalien Swanepoel, Petrol Photography

PROJECT TEAM

Client / Owner / Developer:

Maximix (Pty) Ltd

Architect:

Krynau Nel Associates

Structural Engineer:

Fellows Consulting

Quantity Surveyor:

ETHIQS Quantity Surveyors

Project Manager:

Harrison Project Management

Project Management and Technical Structural Steel:

Integrated Site Control

Main Contractor:

Gothic Construction (Pty) Ltd

Steelwork Contractor and Nominator:

Spiral Engineering cc – colin@spiralengineering.co.za

Balustrades Contractor:

A&D Services (Pty) Ltd

Steelworks Contractor Nursery Columns:

RSB Contracts cc

Structural Steel Detailer / Detailing Company:

KRU Detailing

Cladding Supplier:

Pinnacle Cladding

Painting:

Tasene Painters



WATERFALL WILDS RETAIL CENTRE

Photographer (photo competition): Colin Kirkland, Spiral Engineering cc

ARCHITECTURAL STEELWORK AT IT'S BEST



Spiral Engineering is a market leader in the manufacture of architectural decorative steelworks, balustrades and staircases. This has been achieved through innovative manufacturing techniques, dedication and emphasis on detail.

SPECIALISTS IN ARCHITECTURAL STEELWORK



Tel (011) 474 9115/9 Fax (011) 474 6528 Email colin@spiralengineering.co.za www.spiralengineering.co.za

PROJECT TEAM

Client / Owner / Developer:

Growthpoint Properties

Architect:

SVA International Architects (Pty) Ltd

Structural Engineer and Nominator:

Hatch Africa (Pty) Ltd –
jvanschalkwyk@hatch.co.za

Quantity Surveyor:

Norval Wentzel Steinberg Quantity Surveyors

Project Manager:

MDSA Project Management (Pty) Ltd

Main Contractor:

WBHO

Steelwork Contractor 1:

Uitenhage Super Steel

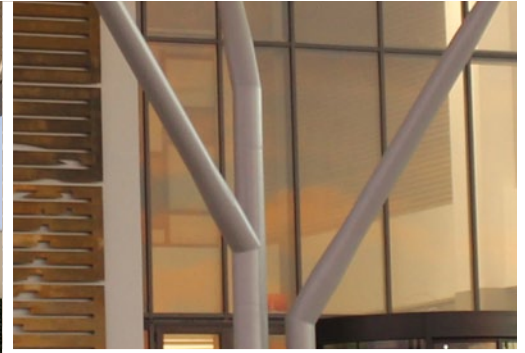
Steelwork Contractor 2 and Structural

Steel Detailer:

NKS

Structural Steel Detailer / Detailing Company:

Mondo Cané



GREENACRES SHOPPING CENTRE ENTRANCE CANOPY

Photographer (photo competition): Nicolene van Schalkwyk



We embrace your vision as our own.

Your challenges are transforming the way you do business. We understand that your needs are changing rapidly and that you need a partner who is proactive in identifying the larger, long-term issues affecting your business.

Welcome to a new era. Together we can build positive change. Contact us at hatch.com

HATCH

GRS METAL CLADDING CATEGORY

GLOBAL ROOFING SOLUTIONS METAL CLADDING CATEGORY WINNER:

STATS SA NEW HEAD OFFICE

Thanks go out to Dennis White, Director of SAMCRA (the South African Metal Cladding and Roofing Association) and Global Roofing Solutions (a founding member of SAMCRA, and sponsor of this category) for their continued support.



Global Roofing Solutions

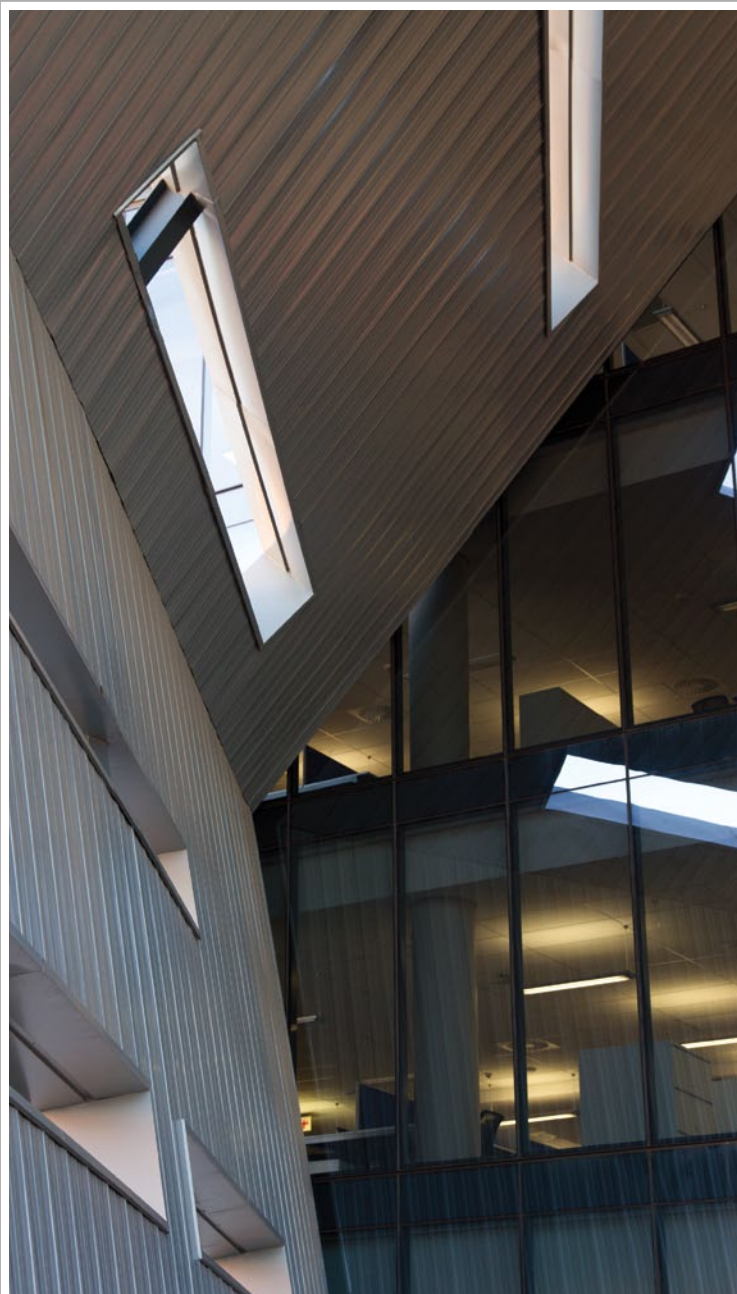
Contact: Lyle Jeffery
Tel: +27 (0)11 898 2900
Fax: +27 (0)11 892 1455
Address: Cnr Tile Road & Paul Smit Street, Boksburg North, 1461
Email: lyle@globalroofs.co.za
Website: www.globalroofs.co.za

Global Roofing Solutions (GRS) is a leading South African metal roofing manufacturing company, comprising two entities, Brownbuilt and HH Robertson, both with track records that extend over six decades.

In 1977, GRS introduced the first mobile rolling mills in SA and today the company continues to lead the field in the mobile mill arena. GRS's mobile mills are the most sophisticated of their kind in Southern Africa. This was followed in 1999 by a world record when it rolled a 136m long single sheet of its Klip-Lok 406 profile. Innovation milestones have continued: the company holds several patents, including the now generically-known 'inverted rib box' (IBR) profile, and was the first manufacturer to offer the unique embossing feature on its sheeting.

GRS's sustained success is based on its proven product range, combined with a service commitment to deliver the exceptional. Quality products, including leading brands Klip-Tite™, Klip-Lok™, Brownbuilt™, Zip-Tek and Nu-Rib 762, are supplied for projects ranging from low-cost housing through to multimillion rand shopping centre developments. GRS also manufactures composite steel floor decking (permanent shuttering) profiles, as well as metal roof tiles.

GRS's expanding footprint includes fully equipped manufacturing operations in major centres across South Africa, along with established facilities in five other African countries. This positions GRS as the ideal roofing solutions partner on all major commercial building, entertainment and residential projects in Sub Saharan Africa.





STATS SA New Head Office

WINNER OF THE GRS METAL CLADDING CATEGORY

The Stats SA project consists of new offices and an archive building. Roof and side cladding is 0.58mm thick Galvanized Z200 GRS Brownbuilt 406 profiled sheeting with standard Chromadek finish one side and standard backing coat to other side. Sheeting colours include Dove Grey, Dark Dolphin and Charcoal. Insulation used over purlin on roof and sides were 40mm thick white faced Lambdaboard and Sisalation 405.

The site was extremely congested and installation programme duration very short. The buildings were high, with lots of angles and direction changes on sides. Underslung sheeting in long lengths in Brownbuilt 406 profile tapered with angles. The Architect requested concealed-fix flashings. In order to address these challenges, the main contractor assisted with crane and special scaffolding. Another solution included the design of special clip-on flashings.

JUDGE'S COMMENT:

"Over and above its aesthetic appeal is the innovative use of metal side cladding on a commercial building, which is most unusual these days. It's also unusual and interesting because on this state of the art modern building, we have a profile used that dates back to the 1960s. Another thing that impressed me was the incredible quality of the workmanship. In this type of an application you really have to pay attention to the detail, or the cladding will look very tacky very quickly." – Dennis White, SAMCRA

What makes this project special is that all roof sheeting, side cladding and soffit sheeting is concealed-fix sheeting. Majority of flashings was concealed-fix or designed to hide fasteners. The most impressive technical aspect of this project is the underslung Brownbuilt 406 profiled sheeting and special flashings.

For a video case study of this project visit:
<http://ow.ly/NCKr303PJQp>

PROJECT TEAM

Client / Owner / Developer:

Dipalopalo

Architect:

GLH Architects – Terra Ether JV

Structural Engineer:

Pure Consulting

Quantity Surveyor:

RLB / Pentad

Project Manager:

GLH Project Manager

Main Contractor:

STATS SA JV

Steelwork Contractor and Nominator:

Cadcon (Pty) Ltd – richbutler@cadcon.co.za

Structural Steel Detailer / Detailing Company:

Mondo Cané

Cladding Contractor:

Tate and Nicholson

Metal Cladding Supplier:

Global Roofing Solutions

Paintwork:

Dram Industrial Painter

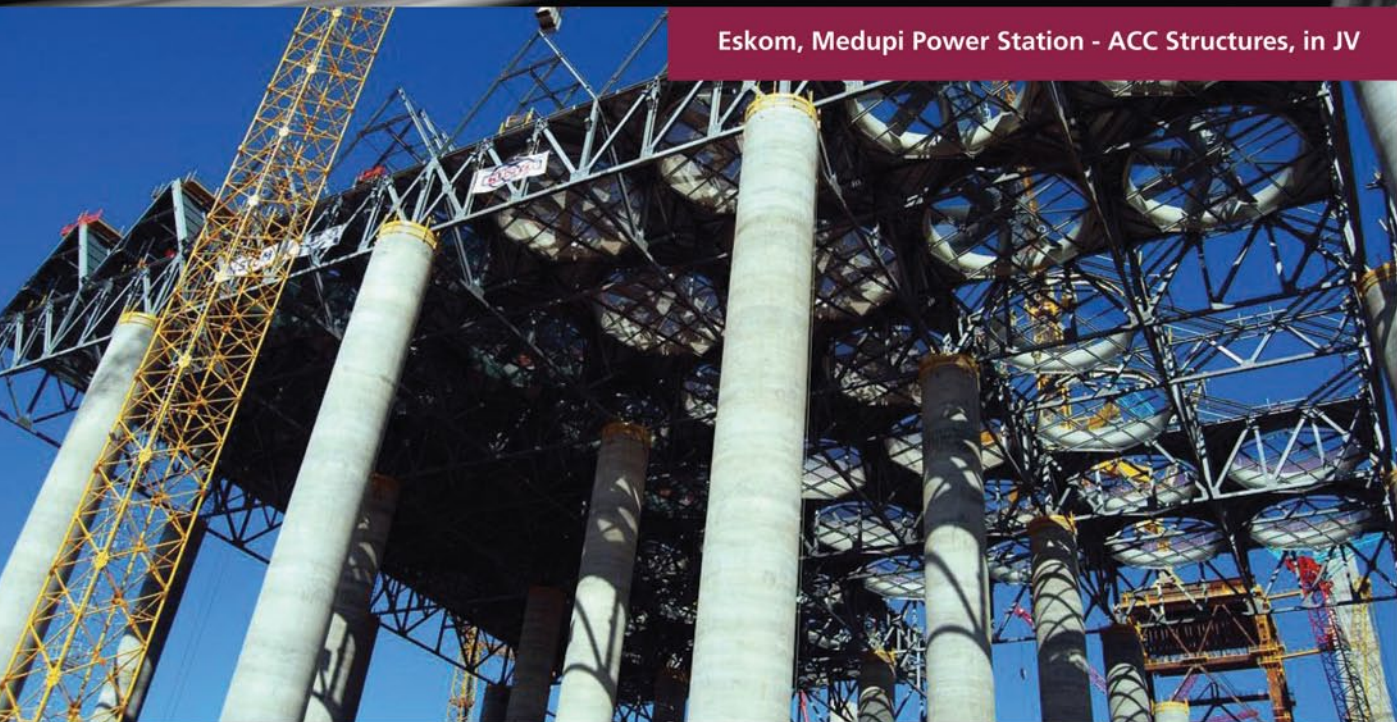
Photographer (photo competition):

Faiyaz Ally, Pure Consulting



STEEL CONSTRUCTION AND ENGINEERING

Eskom, Medupi Power Station - ACC Structures, in JV



Established in 1987, Cadcon, as a vibrant and reputable entity, has grown into a leading steel construction, designing and engineering organization involved in major projects in and around Southern Africa and internationally. Cadcon operates from their 15 400 m² workshop and office facilities in Centurion, Pretoria, housing state of the art machinery and latest technology CNC plate, beam, angle, cutting, drill and saw facilities serviced by 20 overhead cranes. Cadcon has also implemented the FabTrol System providing drawing management, material nesting, purchasing, inventory control, production and CNC management, shipping and more.



Eskom, Medupi Ducting Supports, Lephalale

Planning and completion of various significant and complex national and international projects on time, for commercial, industrial, mining and plant sectors, serves as testimony putting Cadcon as a leader at the cutting edge, in a rapidly growing and competitive environment. Cadcon has valuable experience in exports of steel products internationally and strong innovative contributions to the whole of Southern Africa.



Overall Winner SAISC Steel Awards 2011
Sandton City - Protea Court Rooflight, in JV

Furthermore, Cadcon's unique packages include the design and supply of buildings through Mitec, Cadcon's in-house engineering design department. Additional services include crane, truck and trailer hire.

Cadcon operates their full production process from the delivery of raw material, fabrication, abrasive blasting, corrosion protection, erection and finishing to the proud delivery of the final product through their team of graduates and dedicated artisans. Cadcon's methodologies and processes results in their ability to provide their clients with turnkey solutions at optimum efficiency; **STRIVING FOR EXCELLENCE AND PEACE OF MIND IN STEEL CONSTRUCTION**, this being the cornerstone of Cadcon's success and competency.



1027 Ergon Street • Lyttelton • Ext. 6 • 0157 • Box 35042 • Menlo Park • 0102

Tel: 012 664 6134/40/43/77 • Fax: 012 664 6166 • E-mail: richbutler@cadcon.co.za • www.cadcon.co.za

Striving for Excellence and Peace of Mind in Steel Construction

PROJECT TEAM

Client / Owner / Developer:

Friedrich & Wilma Strey

Architect and Structural Steel Detailer /

Detailing Company:

Strey Architects

Structural Engineer:

Hull Consulting Engineers

Project Manager, Main Contractor and

Nominator:

Friedrich Strey - fstrey@streyarchitects.co.za

Steelwork Contractor:

Tsipe Staalwerke (Hot rolled steel portal frame manufacturing and erection)

Clotan Steel (Supplier, roller and assembly of light gauge steel frames)

Cladding Supplier:

Bluescope Steel— Southern Africa (through Clotan Steel)

Wet work:

Mega Construction

Aluminium Doors and Windows with Double Glazing:

Alugro Aluminium



THE BARN HOUSE (METAL CLADDING)

Photographer (photo competition): Pierre Hugo, Strey Architects

PROJECT TEAM

Client / Owner / Developer:

J T Ross

Architect:

Empowered Spaces

Structural Engineer and Nominator:

Sutherland Engineers –

john@sutherlandengineers.com

Quantity Surveyor:

MLC

Main Contractor:

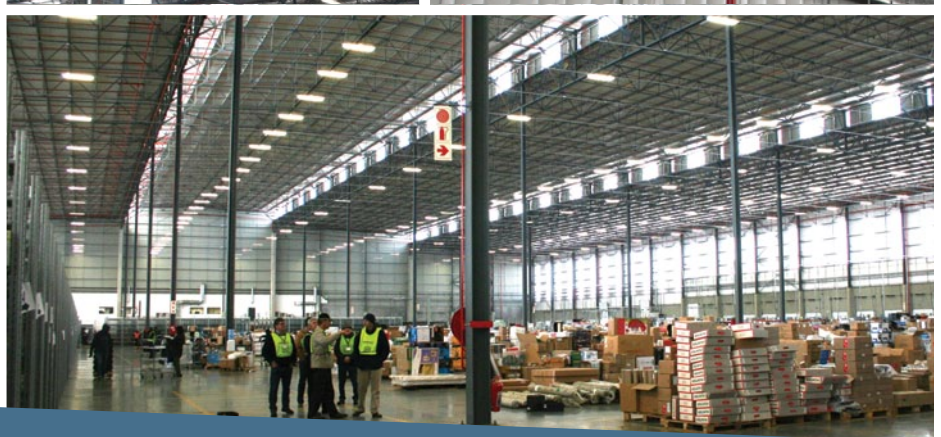
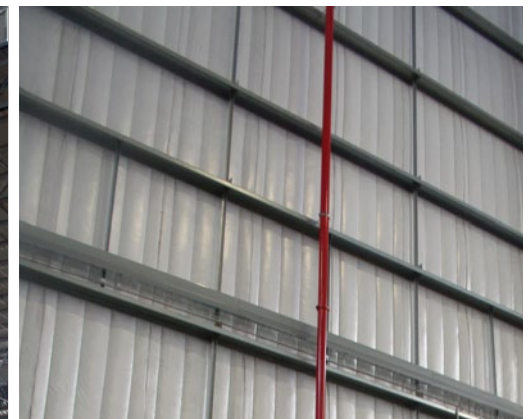
Bantry Construction Services (Pty) Ltd

Steelwork Contractor:

Mazor

Sheeting and Cladding Supplier:

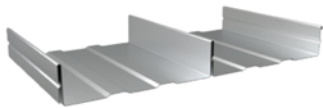
Roofing Guarantee



TAKEALOT

Photographer (photo competition): John Meiring, Sutherland

STATS SA CLADDING CATEGORY FINALIST



 **Brownbuilt**

For all your roofing requirements,
Contact Global Roofing Solutions

Tel: (011) 898 2900

Email: info@globalroofs.co.za

Website: www.globalroofs.co.za

Delivering the *Exceptional*



 **GRS**
GLOBAL ROOFING SOLUTIONS

PROJECT TEAM

Client / Owner / Developer:

Fortress Income Fund

Architect:

ICM Architecture

Structural Engineer and Nominator:

Bigen Africa Services –
frans.maritz@bigenafrica.com

Quantity Surveyor:

MLC Quantity Surveyors

Project Manager:

ICM Architecture

Main Contractor:

Isipani Construction

Steelwork Contractor:

Anchor Steel Projects

Electrical Engineer:

Infrastructure Solutions

Fire Engineer:

Chimera Fire

Mechanical Engineer:

Spoormaker and Partners



CIPLA DISTRIBUTION GATEWAY

Photographer (photo competition): Leon Ras, Bigen Africa Services (Pty) Ltd

PROJECT TEAM

Client / Owner / Developer:

Mangaung Municipality

Architect:

Urban Edge Architects

Structural Engineer:

AECOM

Main Contractor:

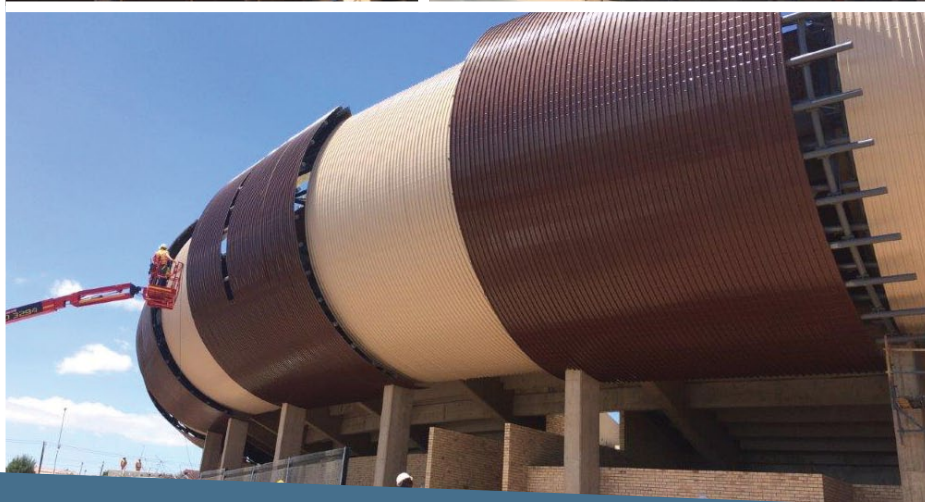
WBHO

Steelwork Contractor and Nominator:

BRD Construction – francois@brdk.co.za

Structural Steel Detailer / Detailing Company:

Construct Steelwork Detailing



SEISA RAMABODU STADIUM (COMMENDATION)

SAFINTRA FACTORY & WAREHOUSE CATEGORY

SAFINTRA FACTORY & WAREHOUSE CATEGORY WINNER:

NEW DISTRIBUTION CENTRE FOR MR PRICE

The metal roofing market has seen a spike of growth and product innovation in recent years, driven in large part by design developments within the construction and architecture industry, often based on considerations of sustainability. Safintra have always prided themselves on doing things differently and continue to drive innovations which raise the bar.



SAFINTRA - World Class Roofing Systems

Tel: +27 (0)11 323 6300
Email: info.safintrasa@safalgroup.com
Website: www.safintra.co.za

Safintra is the choice provider of metal roofing and cladding for the most innovative design demands and challenging structural requirements, offering a wide variety of profiles to suit the full spectrum of our clients' needs.

Safintra's high quality products also save on the overall cost of building, because metal roofing is lighter and does not require the structural support that traditional roofing systems require.

The metal roofing market has seen a spike of growth and product innovation in recent years, driven in large part by design developments within the construction and architecture industry, often based on considerations of sustainability. Safintra have always prided themselves on doing things differently and continue to drive innovations which raise the bar. With the focus on sustainability and green building technologies – metal roofing also proves to be the perfect companion for solar and rainwater harvesting technologies.

Safintra's offering in the timeless corrugated profile is sold under the Classicorr® brand name, with the range of trapezoidal profiles sold under the brand names Tufdek®, Widedek® – featuring an effective cover width of 760mm, Trimflute® and Fluteline®, which has a deeper pan and excellent drainage characteristics.

Versatile® is a unique tiled metal sheet profile which has the aesthetic of tile, but offers all the advantages of steel. Versatile® is sold as a complete system, with its own distinctive roll top ridges, which are designed to complement the profile.

In large-span industrial or warehouse metal roofing applications, concealed fix roof systems are the only choice. Fit for purpose, Safintra offer the Saflok® concealed fix systems available in 700mm and 410mm effective cover widths, held down with securing clips pre-fixed



onto purlins and the sheets are mechanically snapped onto the clip. Safintra also offer the unique Newlok™ standing seam profile – which can be snapped or snapped and seamed – providing exceptional hold down strength.

Safintra supplies a full roofing solution including roofing and cladding, bull-nosing and cranking, flashings and closures, vents, louvres and accessories. The Fixtite® range of fasteners, provides a similar life expectancy to the metal sheets. Safintra also partner with best-of-breed suppliers of complementary products.

Safintra's branch network across South Africa includes: Johannesburg, Durban, Cape Town, Nelspruit, Polokwane, Port Elizabeth, Bloemfontein.

Safintra are part of the Safal Group – the largest metal roofing company in Africa, with a presence in 12 countries across Southern and East Africa, 36 operations and over 50 years of experience.



New Distribution Centre for Mr Price

WINNER OF THE SAFINTRA FACTORY & WAREHOUSE CATEGORY

The design was changed from tender stage to suit material availability at the time of construction. This also gave the opportunity for the steelwork contractor to get involved in the redesign and proposing alternatives that would meet the fast track program.

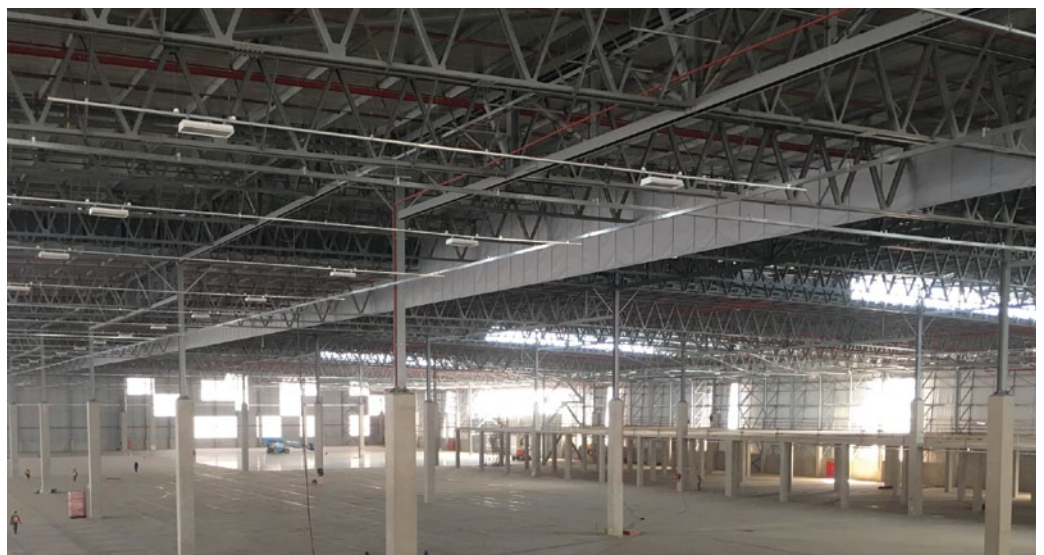
JUDGE'S COMMENT:

"Mr Price was very impressive. Here you had not only the steel fabricator, but the designers, the developers, the project managers - all know how to work together to make this a great project." – Louis Breckenridge, CEA

Steel was chosen as it was the only option in construction for the size of the warehouse and fast track construction program. The warehouse is the typical distribution centre design, with eaves columns, internal main house columns with girders spanning in one direction with trusses spanning at 90 degrees to the girders. Instead of having small monitors on the roof it was decided that every alternate 30m bay would be raised 2.5m higher than the adjacent bay to form very large monitors, or simply a low bay, high bay design.

What makes this project special:

- 10 weeks fabrication lead time prior to erection commencement.





THE NAME FOR WORLD CLASS METAL ROOFING SYSTEMS



SAFINTRA ROLL-FORMS STEEL SHEETING FOR THE MOST INNOVATIVE DESIGN DEMANDS AND CHALLENGING STRUCTURAL REQUIREMENTS, OFFERING A WIDE VARIETY OF PROFILES TO SUIT THE FULL SPECTRUM OF OUR CLIENT'S NEEDS.

Safintra also fabricates and sells roofing accessories and related products. These include flashings, customised vents and louvres, Cleardek® multiwall polycarbonate systems for thermally effective use of natural light and performance-tested Fixtite fasteners. We also offer patented S-5!® clamps for all on-roof attachments including walkways, HVAC, PV panels and more.

Johannesburg, Cape Town, Durban, Port Elizabeth, Polokwane, Nelspruit, Bloemfontein. www.safintra.co.za

Further branches throughout SADC, Southern and Eastern Africa. www.safintra.com

A member of the





- $\pm 1\,000$ tonnes of fabricated material on site prior to erection.
- 14No. Cranes erecting steel + 4No. slave cranes.
- 2No. horse and trailers dedicated to moving steel on site.
- 90 day erection program
- 8 days of inclement weather – not claimable due to contract clause
- Actual erection days = 82 days including weekends and public holidays
- Total tons = 2 754 tonnes
- Average erection rate of 33.5 tonnes per day
- Most tons erected in one day = 76 tons

Unusual, this warehouse used 200 tons of circular hollow section bracing in the roof varying from as small a 114 x 4CHS right up to 406 x 10CHS.

Although not yet installed this Distribution Centre has been designed to have photovoltaic panels on the roof to generate enough electricity to be self sufficient.

In consultation with the steelwork contractors the engineers redesigned the trusses and girders to suit material availability and the erection program. The overall geometry of the trusses and girders was changed to suit normal transport conditions so as to avoid abnormal loads. The truss chords were made of back to back angles and spaced 200mm apart with the internal members comprising of 200IPE and 200 x 75PFC. This led to a very stiff truss which meant that erection on site would go much faster as spreader beams were avoided.

The main challenge in this project was firstly the early procurement of material in order to avoid delays in the construction program.

The second challenge was the logistical co-ordination of the 75 000 assemblies that needed to be fabricated, painted, delivered and erected on site.

The client and professional team including main contractor are extremely satisfied with overall delivery of the structural steel framing.

*For a video case study of this project visit:
<http://ow.ly/ILbV303PK7i>*

PROJECT TEAM

Client / Owner / Developer:

Mr. Price Group Limited

Architect:

Paton Taylor Architects

Structural Engineer:

Arup

Quantity Surveyor:

Edgecombe & Hayes Hill (Pty) Ltd.

Principle Agent:

Paton Taylor Architects

Main Contractor:

Stefanutti Stocks Building KZN

Steelwork Contractor and Nominator:

Avellini Impact Joint Venture – ricardo@avellini.co.za
(Avellini Bros (Pty) Ltd / Impact Engineering (Pty) Ltd)

Structural Steel Detailers / Detailing Companies:

3DCon Steel Detailing (Pty) Ltd

Structech 3D Modelling

Cladding Supplier:

Kingspan

Photographer (photo competition):

Ricardo Avellini, Avellini Bros (Pty) Ltd

KHOMBANANI STEEL

Our quest is lasting impressions



Specialist structural and architectural steelwork contractor.

Level 2 contributor and value added supplier.

Procurement recognition effectively @ 125%

Tel: +27 11 394 8780 • Fax: +27 11 970 1694 • E-mail: marten@khombanani.co.za

PROJECT TEAM

Client / Owner / Developer:

Dabmar Manufacturing Plant, Dundee

Architect:

Architecture Fabrik

Structural Engineer:

Dabmar (Gantry and factory structure)

Quantity Surveyor, Project Manager, Main

Contractor and Nominator:

Shospec (Pty) Ltd – bjorn@shospec.co.za

Steelwork Contractors:

Shospec (Pty) Ltd (LSF office block and workshop cladding)

Churchyard + Umpleby (Pty) Ltd (Gantry)

Barnmaster (Stairs and canopy)

Structural Steel Detailer / Detailing Company:

Dabmar

Cladding Supplier:

CAPCO Ceiling and Partition Components

Roof Cladding:

Four Seasons Roofing



DABMAR MANUFACTURING PLANT (COMMENDATION)

Photographer (photo competition): Grant Ballot, Barcode Media

PROJECT TEAM

Client / Owner / Developer:

J T Ross

Architect:

Empowered Spaces

Structural Engineer and Nominator:

Sutherland Engineers –

john@sutherlandengineers.com

Quantity Surveyor:

MLC

Main Contractor:

Bantry Construction Services (Pty) Ltd

Steelwork Contractor:

Mazor

Sheeting and Cladding Supplier:

Roofing Guarantee



TAKEALOT

Photographer (photo competition): John Meiring, Sutherland

Award Winning Combination

Winners of SAISC STEEL AWARDS, SASFA 2013, 2015



Light Steel Frame Building
Turnkey Projects
Shopfitting
Office Renovations



Shospec (PTY) Ltd

Tel: 033 386 0100

admin@shospec.co.za

www.shospec.co.za

11 Roger De Clerck Place, Mkondeni, KZN



Light Steel Frame Roll Formers
Light Steel Frame Panels
Trusses
Joists



Steel Frame Development (PTY) Ltd

Tel VoIP: 087 809 0133 / Ryan: 0832963078

info@steelfd.co.za

www.steelfd.co.za

**Unit 106, Ensor Industrial Park, Glen Anil,
Durban North**

Superb Finishes | Quick Building Time | Environmentally Friendly | Energy Efficient
Light Steel Frame Building, for The Green Frame of Mind



PROJECT TEAM

Client / Owner / Developer:

Fortress Income Fund

Architect:

O-Inc

Structural Engineer:

L&S Consulting

Quantity Surveyor:

Quanticost Pretoria

Main Contractor:

Abbeydale

Steelwork Contractor and Nominator:

Tass Engineering (Pty) Ltd –

robert@tasseng.co.za

Structural Steel Detailer / Detailing Company:

Tass Engineering (Pty) Ltd

Cladding Supplier:

Tate & Nicholson

Steelwork Erector and System Implementation:

IHJ Engineering



AEROTON ROOFJACK PROJECT

Photographer (photo competition): Mike Bagley, Megapix Digital

PROJECT TEAM

Client / Owner / Developer:

Fortress Income Fund

Architect and Project Manager:

ICM Architecture

Structural Engineer and Nominator:

Bigen Africa Services –

frans.maritz@bigenafrica.com

Quantity Surveyor:

MLC Quantity Surveyors

Main Contractor:

Isipani Construction

Steelwork Contractor and Structural Steel

Detailer:

Anchor Steel Projects

Cladding Supplier:

Schelltema/ Safintra

Electrical Engineer:

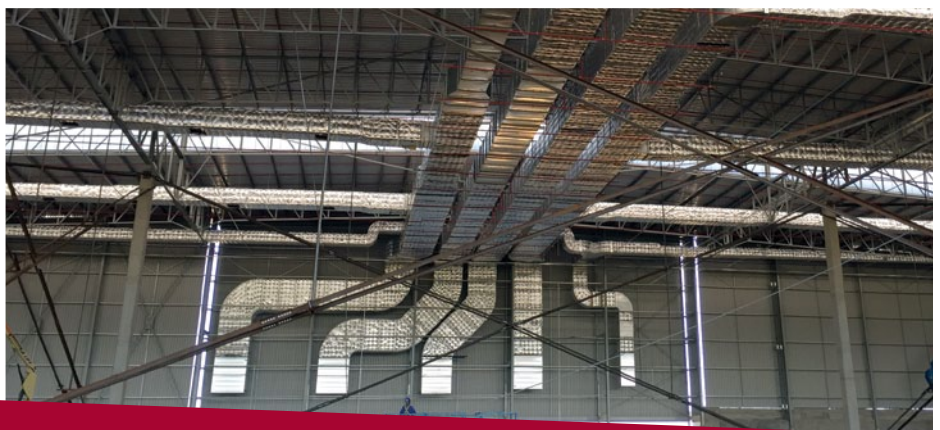
Infrastructure Solutions

Fire Engineer:

Chimera Fire

Mechanical Engineer:

Spoormaker and Partners



CIPLA DISTRIBUTION GATEWAY

Photographer (photo competition): Leon Ras, Bigen Africa Services (Pty) Ltd

COMMERCIAL ARCHITECTURAL CATEGORY

COMMERCIAL ARCHITECTURAL CATEGORY WINNER:

EASTGATE REFURBISHMENT PHASE 2

Eastgate Refurbishment Phase 2 is the Commercial Architectural Category winner as well as the Overall Winner of Steel Awards 2016.

PROJECT TEAM

Client / Owner / Developer:

Liberty Life

Architect:

Batley & Partners

Structural Engineer:

Aurecon Group

Quantity Surveyor:

NWS Quantity Surveyors

Project Manager:

Focus Project Management

Main Contractor:

Stefanutti Stocks Building Gauteng

Steelwork Contractor and Nominator:

Tass Engineering (Pty) Ltd –
robert@tasseng.co.za

Structural Steel Detailer / Detailing Company:

3DStruct

Erector:

On Par Erection Works

Metal Roofing and Bond-Dek Supplier:

Global Roofing Solutions

Bond-dek & Shear Stud Installation:

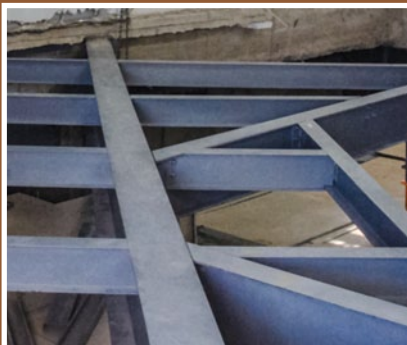
Builcon

Roofing and Cladding Contractor:

Chartwell Roofing

Photographer (photo competition):

Mike Bagley, Megapix Digital



PROJECT TEAM

Client / Owner / Developer:

Sol Plaatje University

Architect and Nominator:

Savage + Dodd Architects cc –
heather@savagedodd.co.za

Structural Engineer:

THS & Associates cc

Quantity Surveyor:

LimCo QS, Arbitration & Project Management cc

Project Manager:

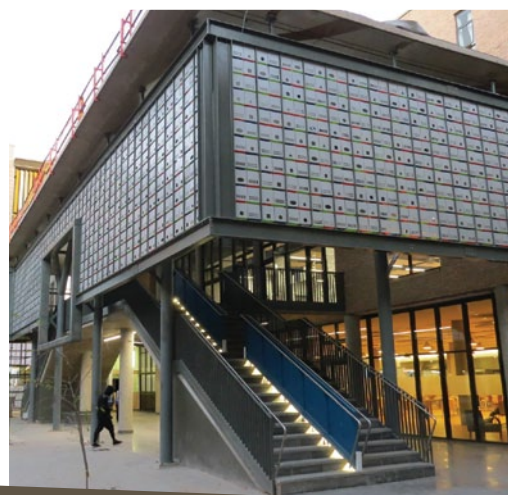
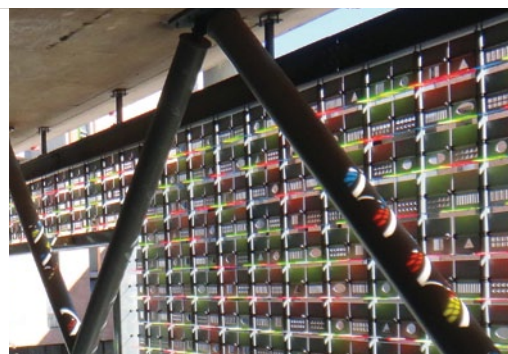
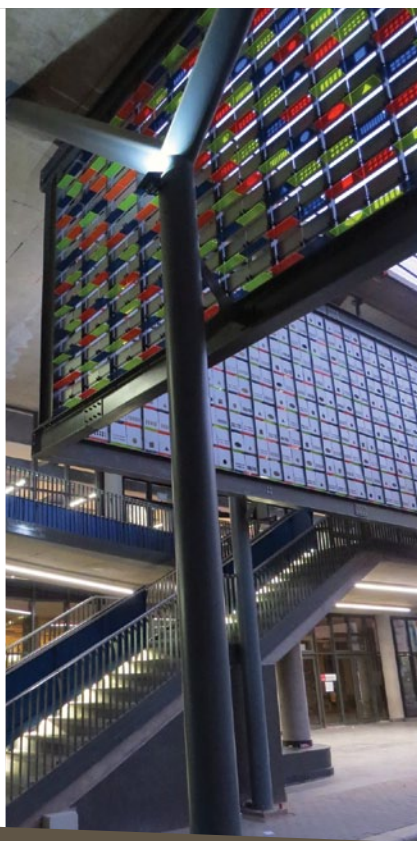
AECOM

Main Contractor:

Trencon Construction

Steelwork Contractor:

RVI Robertson Ventilation Industries



SOL PLAATJE DYNAMIC SUNSCREEN

Photographer (photo competition): Colin Savage. Savage + Dodd Architects cc

PROJECT TEAM

Client / Owner / Developer:

Msunduzi Municipality

Architects:

GDB Engineers cc

Msunduzi Municipality

Structural Engineer:

GDB Engineers cc

Main Contractor:

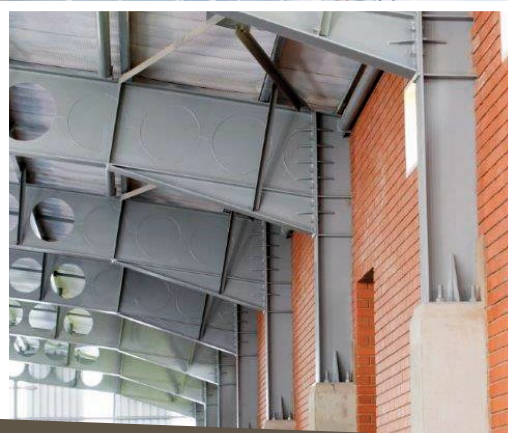
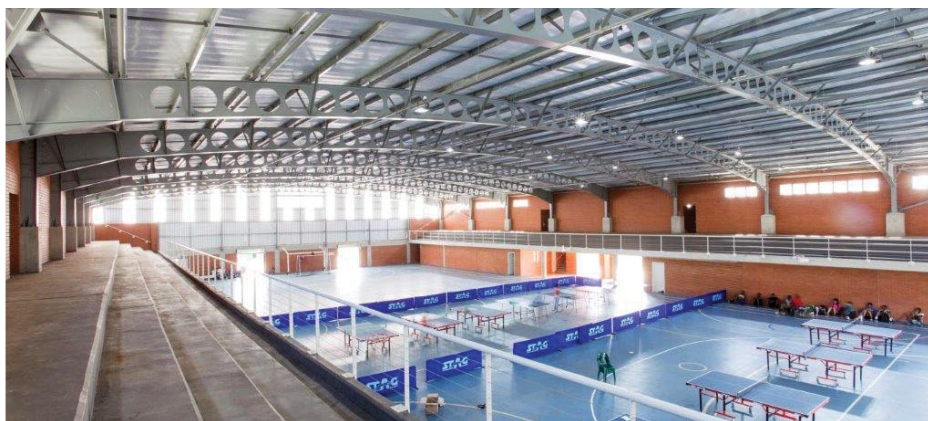
Robertson & Poole Construction cc

Steelwork Contractor:

Churchyard & Umpleby Construction

Cellular Beam Manufacturer and Nominator:

Macsteel Trading (Pty) Ltd –
tebogo.raaleka@macstrading.co.za



CALUZA SPORTS HALL

Photographer (photo competition): Dani Jensen. Dani Jensen Photography

PROJECT TEAM

Client / Owner / Developer:

GRGS Educational Trust

Architect and Nominator:

John Smillie Architects –
john@johnsmilliearchitects.com

Structural Engineer:

Young & Satharia Structural and Civil Consulting
Engineers

Quantity Surveyor:

Schoombie Hartmann Quantity Surveyors

Main Contractor:

Verbaan Construction

Steelwork Contractor:

NIK Projects (Pty) Ltd

Structural Steel Detailer / Detailing Company:

NIK Projects (Pty) Ltd



GORDON ROAD GIRLS' SCHOOL LEARNER SUPPORT CENTRE

Photographer (photo competition): Kierran Allen, Kierran Allen Photography



011 615 3655

www.lucidfilms.co.za

info@lucidfilms.co.za



the art of high impact videos



aerial footage included as standard



digital marketing specialists



beautiful 4K Ultra HD quality



open access to raw footage



industrial video expertise



crystal clear dynamic music

PROJECT TEAM

Structural Engineer:

WSP/Parsons Brinckerhoff, Commercial Civils, Africa

Main Contractor:

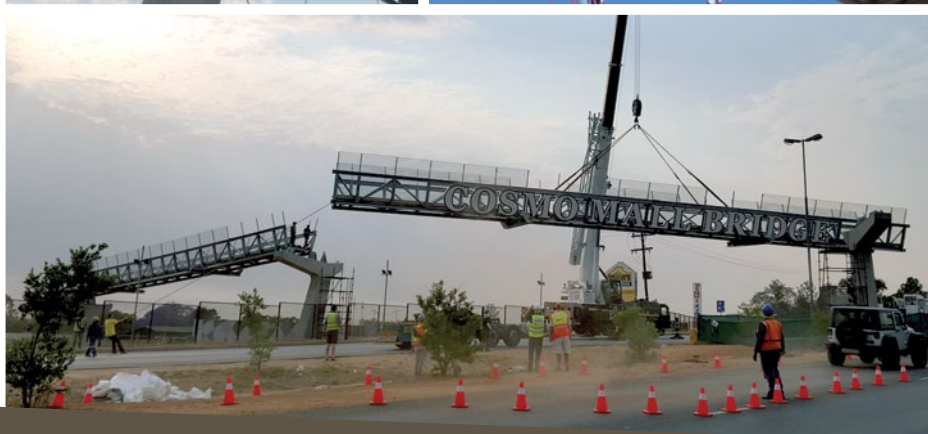
Trencon Construction

Steelwork Contractor and Nominator:

Ferro Eleganza (Pty) Ltd –
chris@ferroe.co.za

Structural Steel Detailer / Detailing Company:

Ferro Draughting (Pty) Ltd



COSMO MALL BRIDGE

Photographer (photo competition): Chris Narbonese, Ferro Eleganza

PROJECT TEAM

Client / Owner / Developer:

Atterbury Waterfall Investment Company (Pty) Ltd

Architect:

Aevitas Architects Group (Pty) Ltd

Structural Engineer:

DG Consulting Engineers (Pty) Ltd

Quantity Surveyor:

Norval Wentzel Steinberg

Main Contractor:

Archstone Construction (Pty) Ltd

Steelwork Contractor and Nominator:

Tass Engineering (Pty) Ltd – tim@tasseng.co.za

Structural Steel Detailer / Detailing Company:

GB Draughting

Corrosion Protection:

Dram Industrial Painters (Pty) Ltd

External Cladding Contractor:

Alania Building Systems



WATERFALL CITY BRIDGE

Photographer (photo competition): Mike Bagley, Megapix Digital



ELEVATING THE INDUSTRY

Ferro Eleganza services the industry with the construction of steel structures for Commercial buildings, Shopping Centres, Architectural Structures, and Mining Infrastructure.

With 5500m² of factory space, Ferro Eleganza has the capacity to produce from 250 tons of light structural steel to over 350 tons of

heavy structural steel per month. With state of the art CNC machines the fabrication details are received and processed directly from their in-house detailing office.

Recently completed projects:

- Airport Junction Shopping Centre Botswana - 1750 tons
- Brits Granite Factory - 450 tons
- JD Group Warehouse Rosslyn - 360 tons
- Brits Mall - 750 tons



Tel: (012) 803-8035
208 Vonkprop Street, Samcorpark, Silverton x2, 0127

PROJECT TEAM

Client / Owner / Developer:

Rivers Church

Architect:

DBM Architects

Structural Engineer:

MVW Consulting Engineers

Quantity Surveyor:

QS4U

Project Manager:

QS4U

Ramp Structures Steelwork Design:

Consultauri Design (Pty) Ltd

Steelwork Contractor and Nominator:

Spiral Engineering cc –
les@spiralengineering.co.za

Balustrading Contractor:

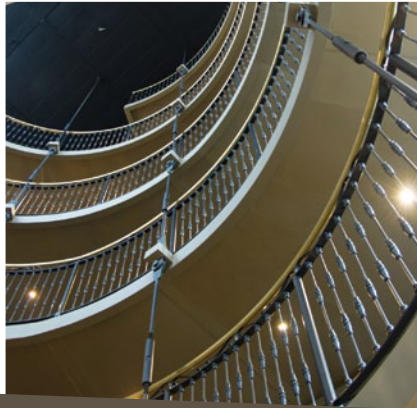
Wrought Iron Factory

Structural Steel Detailer / Detailing Company:

Spiral Engineering cc

Painting:

Tasene Painters



RIVERS CHURCH AUDITORIUM – SPIRAL RAMP STRUCTURES

Photographer (photo competition): Colin Kirkland, Spiral Engineering cc



MC/ ENTERTAINMENT CAPE TOWN

Master of Ceremonies and Comedian

Nik Rabinowitz

Stand up comic Nik Rabinowitz grew up on a farm in Africa, climbing trees and commentating on his own rugby games in three of South Africa's eleven official languages.

He's been a guest on BBC 2's Mock the Week, performed at London's Royal Albert Hall, and intentionally driven on the wrong side of the road in Nigeria.

Contact:

Emma at ERM Stars

+27 (021) 456 1000

+28 (0) 82 777 1428

emma@ermstars.com



The Jakob® Rope Systems Webnet is an affordable custom-manufactured premium quality product that is highly compatible with creative contemporary architecture.

Tel +27 (0) 11 460 1744 | Email nfinox@global.co.za

NF INOX
stainless steel cables and fittings

Sole Agents for Southern Africa

Jakob®
Rope Systems



Photo credits: www.jakob.com



RESIDENTIAL ARCHITECTURAL CATEGORY

RESIDENTIAL ARCHITECTURAL CATEGORY WINNER:

TREE HOUSE, CONSTANTIA

JUDGE'S COMMENT: "This project really stood out for me. I think it's a very special structure. Small, but very special." – Prof. Alex Elvin

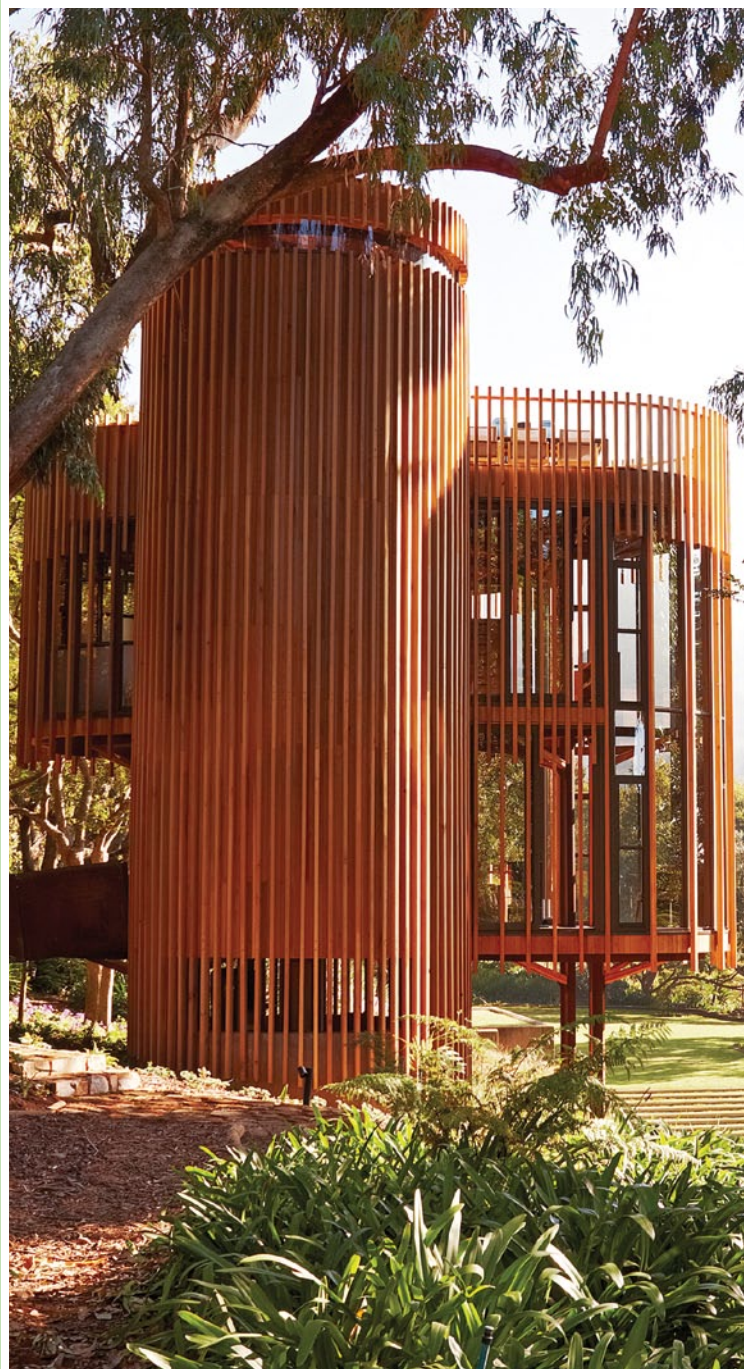
One enters the floating building by means of a weathering steel bridge with a timber deck walkway. The lowest floor contains a living area and kitchen, with two double volumes and a circular stair linking the living area visually and physically to the bedroom level above. Large sliding doors, 6m high, open up the living level to a balcony overlooking the estate's gardens

A circular stair, with sculptural treads carved from solid standing laminated oak, and supported on weathering steel steel reaches, lead up to the bedroom level (with bathroom), and then further up to a roof deck with views over the Constantia Valley.

The structural system was executed in laser-cut weathering steel plate, bent to form faceted columns, branch-like arms and rings. There are 4 structural column clusters, each consisting of 4 weathering steel columns held together with the arms and rings, to support spruce and western red cedar floor beams. The columns are bolt fixed by means of a large circular baseplate on conical concrete pad footings.

There is no steel connection between any of the steel structural columns but the timber floor plate construction. The stair "drum" consists of a half circular lattice framework of mild steel hollow tubing and angles – bracing the structure as it is bolted down onto a concrete drum at ground level (where the building's utilities are concealed behind a slatted timber screen).

All shapes cut from the weathering steel plate had to fit into the laser cutter's maximum size restriction, as well as the allowance for shapes that can be folded. All components of the steel structure needed to be transported to a site with narrow driveways. The house is situated high on a slope without any direct vehicular or crane access. Components were pulled to the site on a sleigh with a winch, and then hoisted up by means of a gantry supported by scaffolding surrounding the house site. Getting building





components to a remote part of the site that is inaccessible by road proved challenging.

Some of the larger components were winched up an embankment to the position of the construction site. The site was enclosed in a scaffold structure that was covered with a tarpaulin and hail netting so that work could take place during the rainy season. Chain blocks were attached to two I-beams at the top of the scaffold structure to raise and lower components into position.

The slender nature of the vertical steel structural elements meant that there was flex in the structure when loaded and the steel structure had to be braced prior to the timber being installed. What makes this project special is the high level of customization and detail required, with very small manufacturing and assembly tolerances. Steel was used to express the natural structural systems of the trees surrounding the house.

For a video case study of this project visit:
<http://ow.ly/sFzX303PKo3>



PROJECT TEAM

Client / Owner / Developer:

Graham Paarman

Architect and Nominator:

Malan Vorster Architecture Interior Design –
 pieter@malanvorster.co.za

Structural Engineer:

Henry Fagan & Vennote

Quantity Surveyor:

DA Quantity Surveyors

Main Contractor:

T. Naude

Steelwork Contractor:

Link Engineering

Photographer (photo competition):

Micky Hoyle, Condé Nast House & Garden

PROJECT TEAM

Client / Owner / Developer:

Private Client

Architect and Nominator:

Koop Design – koop@koopdesign.co.za

Structural Engineer:

Young & Satharia Structural and Civil Consulting Engineers

Main Contractor:

Self build – Client managed sub contractors

Steelwork Contractor:

Ogilvie Engineering

Structural Steel Detailer / Detailing Company:

Structech



HOUSE BLUECRANE

Photographer (photo competition): Rodger Jardine, Roger Jardine Photography

PROJECT TEAM

Client / Owner / Developer and Nominator:

Midax Investments (Pty) Ltd – pac@structa.co.za

Architect:

David and Eric Mealin Architects

Structural Engineer:

Young & Satharia Structural and Civil Consulting Engineers

Project Manager:

SBC Projects (Pty) Ltd Construction

Main Contractor:

Omeida Trading 410 cc

Steelwork Contractors:

C.I.S Engineering (Pty) Ltd

WPM Construction cc

Structural Steel Detailer / Detailing Company:

C.I.S Engineering (Pty) Ltd

Cladding Supplier:

EI-Shaddai Ceilings & Partitions cc

Supplier of GRP cladding:

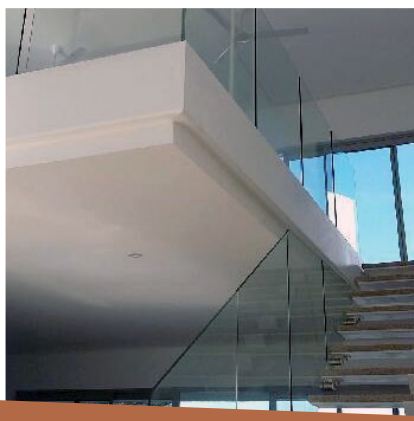
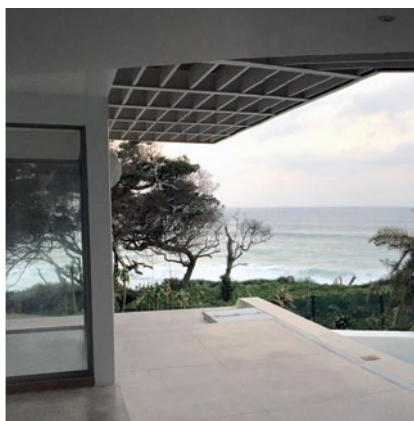
Excellent Engineering cc

Galvanizer:

Lianru Galvanizers

Structural Steelwork Painter:

Bulldog Projects (Pty) Ltd



MIDAX HOUSE, ZINKWAZI BEACH (COMMENDATION)

PROJECT TEAM

Client / Owner / Developer:

Pin Business

Architect and Nominator:

Strey Architects – fstrey@streyarchitects.co.za

Structural Engineer:

Hull Consulting

Project Manager, Main and Steelwork

Contractor:

Modul8 (Pty) Ltd

Structural Steel Detailer / Detailing Company:

Strey Architects

Cladding Supplier:

Dalucon Refrigeration Products

Roofer, Civil Works and Plumbing & Electricity:

Modul8 (Pty) Ltd

Aluminium & Glass:

Alugro Aluminium & Glass (Pty) Ltd



AFRISKI BACKPACKERS

Photographer (photo competition): Pierre Hugo, Strey Architects

STEEL CONSTRUCTION



C.I.S Engineering specialises in the manufacturing and installation of superior steel products supporting an impressive range of:

BUILDING STRUCTURES, WAREHOUSES, PROCESS PLANT SUPPORT STRUCTURES, GANTRIES, STAIRCASES AND WALKWAYS

Manufactured with state of the art beam drilling and iron worker lines and high definition plasma cutters

C.I.S can produce 1 000ton of structural steel per month. Our facility is housed in a 9 000m² under roof and crane area.



Member of the Structa Group of Companies

8 Firestone Street, Vanderbijlpark | Tel: 016 986 1135 | Fax: 016 986 2682
Email: admin@cisengineering.co.za | www.cisengineering.co.za

HOT DIP
GALVANIZERS
ASSOCIATION
SOUTHERN AFRICA



SOUTHERN AFRICAN INSTITUTE OF
STEEL CONSTRUCTION



SABS
ISO 9001

C.I.S Engineering is a Level 3 BBBEE Contributor

PROJECT TEAM

Architect and Nominator:

Strey Architects – pierre@streyarchitects.co.za

Structural Engineer:

Hull Consulting Engineers

Project Manager, Main and Steelwork

Contractor:

Modul8 (Pty) Ltd

Structural Steel Detailer / Detailing Company:

Strey Architects

Cladding Supplier:

Dalucon Refrigeration Products

Roofer:

Modul8 (Pty) Ltd

Aluminium & Glass:

Alugro Aluminium & Glass (Pty) Ltd

Civil Works & Foundations:

Modul8 (Pty) Ltd

Plumbing:

McNeeb Plumbers



ST JOHANN

Photographer (photo competition): Pierre Hugo, Strey Architects

PROJECT TEAM

Client / Owner / Developer:

Friedrich & Wilna Strey

Architect, Structural Steel Detailer and Nominator:

Strey Architects – fstrey@streyarchitects.co.za

Structural Engineer:

Hull Consulting Engineers

Project Manager and Main Contractor:

Friedrich Strey

Steelwork Contractor:

Tsipe Staalwerke (Hot rolled steel portal frame manufacturing and erection)

Clotan Steel (Supplier, roller and assembly of light gauge steel frames)

Cladding Supplier:

Bluescope Steel – Southern Africa (through Clotan Steel)

Wet work:

Mega Construction

Aluminium Doors and Windows with Double Glazing:

Alugro Aluminium



THE BARN HOUSE (COMMENDATION)

Photographer (photo competition): Pierre Hugo, Strey Architects



The modular design enables execution of cutting, drilling, milling, marking and thermal cutting including bevel to finish the piece in a single set-up, using the most suitable and up-to-date technologies.



FOR MORE INFORMATION CONTACT
PATRICK PEREIRA

TEL: 011 976 8600 | FAX: 011 394 2471

ppereira@retecon.co.za

www.retecon.co.za



RETECON (PTY) LTD
Your Partner in Metal Working

CAPE TOWN: 021 555 2270 | PORT ELIZABETH: 041 453 2720 | DURBAN: 031 701 81 49



PROJECT TEAM

Client / Owner / Developer and Nominator:

Braam Beukes – tudor@nettron.co.za

Architect:

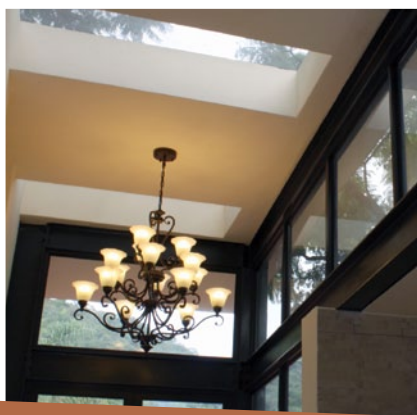
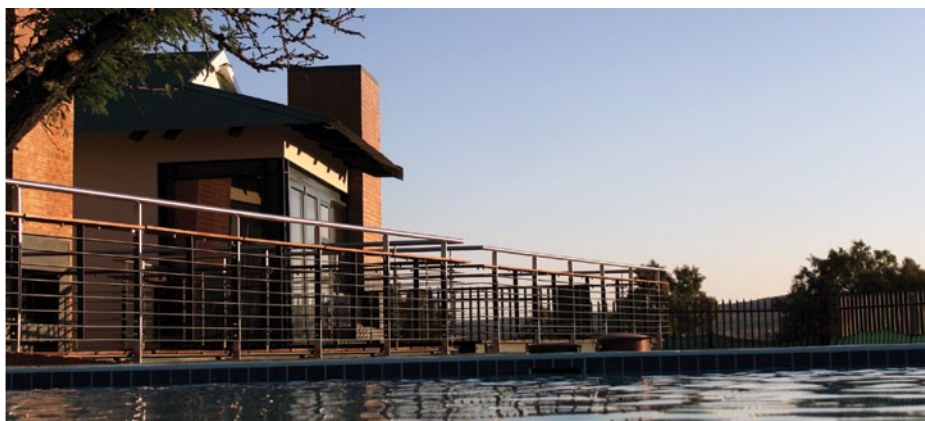
Tudor Engineering & Draughting cc

Steelwork Contractor:

Tudor Engineering & Draughting cc

Structural Steel Detailer / Detailing Company:

Tudor Engineering & Draughting cc



ZIMBI LODGE

Photographer (photo competition): Lindy Beukes, Tudor Engineering & Draughting cc

PROJECT TEAM

Client / Owner / Developer:

Alpine Attitude Boutique Hotel

Architect and Nominator:

Nadine Engelbrecht Architects –
studio@nadineengelbreght.co.za

Steelwork Contractors:

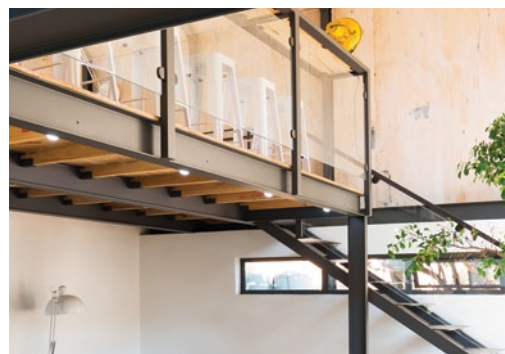
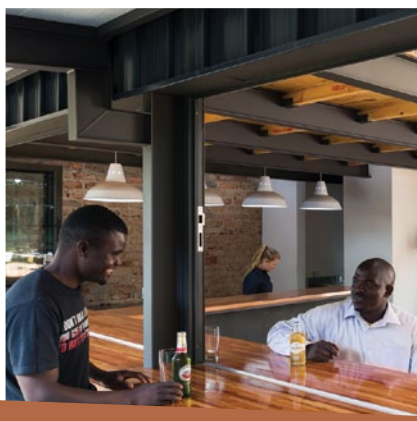
Ranco Ondernemings (Main structure)

EJ Fourie Projects (Canopy and smaller steel
details)

Kare Sheet Metal Products (Stairs)

Cladding Supplier:

Trust Sheetmetal



CREATE CAFÉ AT ALPINE ATTITUDE

Photographer (photo competition): Marsel Roothman, Marsel Roothman Photography

MINING & INDUSTRIAL CATEGORY

MINING & INDUSTRIAL CATEGORY WINNER:

HUSAB URANIUM STOCKPILE COVER & ANCILLARY STRUCTURES

JUDGE'S COMMENT: "What really made it special for me is the fact that you have this structure that's two soccer fields long, and the best part of a soccer field wide put up in a matter of weeks – purely because the job was planned so well." – Spencer Erling



The project entailed the detailing, fabrication, corrosive protection, delivery and installation of two thousand six hundred tons of steelwork, as well as twenty-one thousand square metres of IBR sheeting.

There were a number of interesting challenges to overcome, i.e. short lead times, high specifications required by client, galvanizing of trusses, for the logistical challenges due to cross border distances, lifting and jacking in the 140 ton gantries and sheeting the building on forty-five degree slopes. We pioneered some ideas at each phase to overcome the challenges and ultimately bring the project home safely and in time.

Some highlights were:

- The logistical concern of delivering this volume of steel and sheeting was overcome by partnering with a local transported and dedicated trucking supplemented our in-house fleet.
- The development of the idea and plan to strand jack the gantries (50-meter span and 140 tons) into place forty meters above ground level, as opposed to using the traditional method of cranes, allowing for this part of the project work to be done faster and safer, ultimately saving the project time and the client monies.
- The development of sheeting gondola platforms, which supported a four-man team,



tools and materials. These working platforms allowed for the sheeting installation crews to achieve around one thousand two square metres of sheeting installation per day. The safety risk of working on the steep slope was totally eliminated and went a long way in ensuring that Union Steel achieved another incident free project.

- Preassembly of truss box section allowed for the site crews to lift into place bigger sections of steelwork, minimising works being carried out in the air, again target our approach to

ensuring that our focus on all projects is safety first, and driven with this mind-set.

The project duration including both on and offsite activities was fourteen months with the site duration being eleven months.

PROJECT TEAM

Client / Owner / Developer:

Swakop Uranium (Pty) Ltd

Structural Engineer:

HPJV between Amec and Tenova Bateman

Structural Engineer:

WAH Engineering (Pty) Ltd

Quantity Surveyor:

Professional Cost Consultants

Project Manager:

HPJV between Amec and Tenova Bateman

Steelwork Contractor and Nominator:

Union Structural Engineering Works (Pty) Ltd

Info@unionsteel.co.za

Structural Steel Detailer / Detailing Company:

Union Structural Engineering Works (Pty) Ltd

Cladding Supplier:

Re Union Projects (Pty) Ltd

Steel Erectors:

Re Union Projects (Pty) Ltd

Painters:

Nu Nation Protective Coating

PROJECT TEAM

Client / Owner / Developer:

Mopani Copper Mines PLC

Structural Engineer and Nominator:

Hatch Africa (Pty) Ltd –
silvana.lodrigo@hatch.com

Main Contractor:

Steel Services and Allied Industries (Pty) Ltd

Quantity Surveyor:

Mopani Copper Mines PLC

Project Manager:

Hatch Africa (Pty) Ltd and Mopani Copper
Mines PLC

Structural Steel Detailer / Detailing Company:

Cadhouse Design Enterprises cc

Cladding Supplier:

Steel Services and Allied Industries (Pty) Ltd

Paintwork Contractor:

Steel Services and Allied Industries (Pty) Ltd

Civil Installation and Main Steel Erector:

Murray and Roberts Cementation Zambia Ltd

Steel Erection Supervisor:

Steel Services and Allied Industries (Pty) Ltd



MOPANI COPPER MINES PLC – SYNCHLINORIUM HEADGEAR



STEEL SERVICES

Experts in steel. Specialists in service.

Steel Services supply heavy engineering steel solutions to the construction and mining industry, designers and architects. Whether it is a shopping center or steel work for a mine shaft, we've earned a reputation for expertise and excellence in service (with Steel Awards to prove it).

Steel Services and Allied Industries is committed to providing innovative steel fabrication, industrial and mining solutions to cover the full spectrum of steel engineering services including crane hire and ventilation support systems.



Tel +27 (0) 18 787 2059 | +27 (0) 18 787 2083
www.steelservices.co.za

PROJECT TEAM

Client / Owner / Developer:

DeBeers

Structural Engineer and Nominator:

WorleyParsons –

Stuart.Doran@worleyparsons.com

Quantity Surveyor:

WorleyParsons

Project Manager:

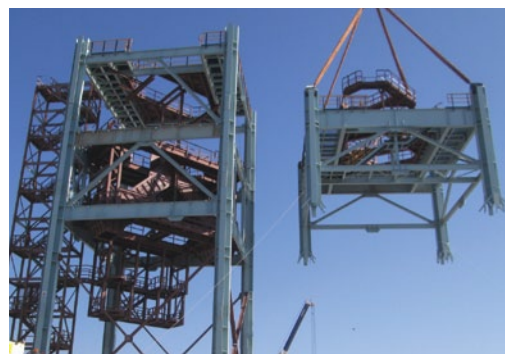
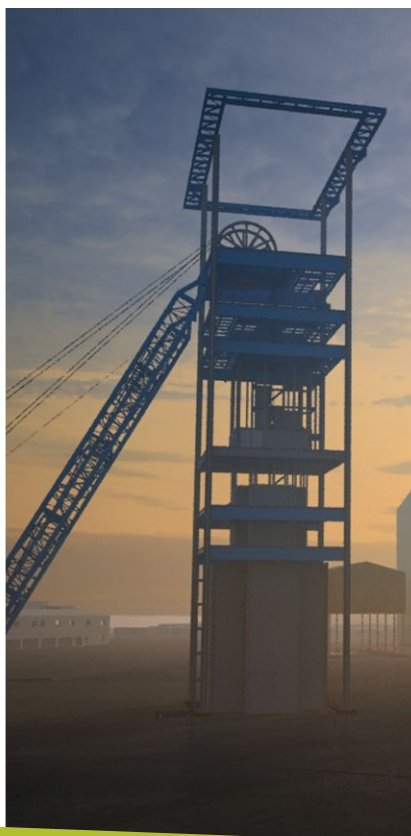
WorleyParsons

Main Contractor:

Genrec

Structural Steel Detailer / Detailing Company:

Genrec



VENETIA UNDERGROUND PROJECT

Photographer (photo competition): Stuart Doran, WorleyParsons

PROJECT TEAM

Client / Owner / Developer:

Sunrise Energy

Project Manager and Nominator:

Efficient Engineering – grahamh@efficient.co.za

Main Contractor:

Efficient Engineering



SALDAHNA LPG BULLETS

Photographer (photo competition): Mike Van Der Walt, Efficient Engineering

Realising possibilities...

...from mine to market.



WorleyParsons adds value through our full scope of services from pit to port including studies, mine planning, impact assessments, permitting and approvals, project management, construction management and global procurement.

42 countries **124** cities with offices **26,100** people



WorleyParsons

resources & energy

www.worleyparsons.com



PROJECT TEAM

Client / Owner / Developer:

Genrec / MHPSA

Steelwork Contractor:

Genrec

Structural Steel Detailer / Detailing Company:

MHPSA

Structural Steel:

Genrec

Structural Steel:

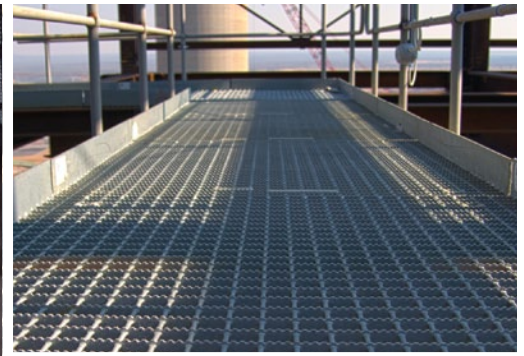
DSE

Structural Steel:

Thai Erec

Manufacturer and Supplier of Grating and Handrails, Nominator:

Vital Engineering – dodds@gratings.co.za



KUSILE / MEDUPI POWER STATION – GRATINGS AND HANDRAILS

Photographer (photo competition): Richard Sherman, Lucid

VITAGRID

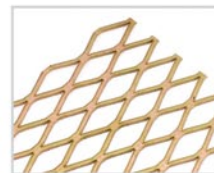
THE LEADING MANUFACTURER IN GRATING, STAIRTREADS, MESH, EXPANDED METAL AND HANDRAIL SYSTEMS.

SERVICING AFRICA AND BEYOND WITH QUALITY - SERVICE - SAFETY - COMMITMENT.

GRATINGS HANDRAILS EXPANDED METAL VITAGRID MACLOCK VITACON VITEX VITAGLASS STAIRTREADS FIBERGLASS



VITAL ENGINEERING & ANGUS MCLEOD



OVER
70
YEARS YOUNG
& GROWING

NATIONAL ASSOCIATION
OF CERTIFICATION BODIES
M
ENISO
9001-2008

Tel +27 (0) 11 898 8500 Fax + 27 (0) 86 743 9880 Website www.vitagrid.com Email sales@gratings.co.za

SAINT-GOBAIN LIGHT STEEL FRAME CATEGORY

SAINT-GOBAIN LIGHT STEEL FRAME CATEGORY JOINT WINNERS:

THE MALL OF AFRICA, LSF FAÇADE & PARAPET WALLS AND THE TEMPORARY OPD UNIT AT SWAZILAND GOVERNMENT HOSPITAL, MBABANE

We had a total of 15 entries in the LSF category, sponsored by Saint-Gobain. It constitutes a third of the number of all the entries for Steel Awards 2016. Some 50% of the LSF entries were for commercial / office and community infrastructure buildings, with residential and industrial projects making up the rest.

Projects included a 3 storey house used as an office building, a fire station, several office and industrial buildings, suspended curved walls for a restaurant, a hospital and curtain walling for the largest shopping centre built in the Southern hemisphere during 2015. The projects were geographically evenly spread across Gauteng, KZN and the Orange Free State – with two projects in neighbouring countries. The entries covered some 42 000m² of building area – roughly 10% of the annual LSF building volume.

The joint winners of the Saint-Gobain Light Steel Frame Category 2016 are The Mall of Africa Façade and Parapet Walls, and The Temporary OPD Unit at Swaziland Government Hospital Mbabane.



Saint-Gobain Construction Products South Africa (Pty) Ltd

Contact: Kerry Henning **Tel:** +27 (0)12 657 2800 **Fax:** +27 (0)11 252 6251 **Email:** za.enquiries@saint-gobain.com **Website:** www.saint-gobain.co.za

Physical Address: 1 Shale Road, N1 Business Park, Cnr Old Johannesburg Road and Tlokwa street, Kosmosdal **Postal Address:** PO Box 50416, Rantjiesfontein, 1683

Saint-Gobain, the world leader in the habitat and construction markets, designs, manufactures and distributes building materials, providing innovative solutions to meet growing demand in emerging economies.

Since 1665, Saint-Gobain has consistently demonstrated its ability to invent products that improve quality of life.

As one of the top 100 industrial groups in the world, Saint-Gobain continues to deploy its technological know-how, often in partnership with the most prestigious universities and laboratories. To give an idea of our commitment to innovation, 20% of Saint-Gobain products did not exist 5 years ago. Saint-Gobain is among the 1100 most innovative companies in the world according to the 2011, 2012 and 2013 Thompson Reuters Survey.

The Saint-Gobain construction products brand represented in South Africa include Gyproc, Isover, PAM, Weber and Habito. They provide system solutions incorporating plasterboard and gypsym plasters; glasswool and mineral wool for thermal and acoustic insulation; a variety of foam insulation products; ductile iron and cast iron products; wall, floor and pool finishes; tile adhesives and grouts.

We believe that our commitment to the region extends beyond the products we provide. To this end, the Technical and Specifications Department of Saint-Gobain South Africa provides specialist expertise and resources to architects and specifying professionals in the industry. It also invests in skills development through the Saint-Gobain Academies.

Saint-Gobain prides itself on being a responsible business player that prioritises local investment. We see ourselves as a social-economic organisation that contributes to local growth, is committed to finding solutions to major environmental challenges, and eagerly takes on social issues.



MALL OF AFRICA, LSF FAÇADE & PARAPET WALLS

JOINT WINNER OF THE LIGHT STEEL FRAME CATEGORY

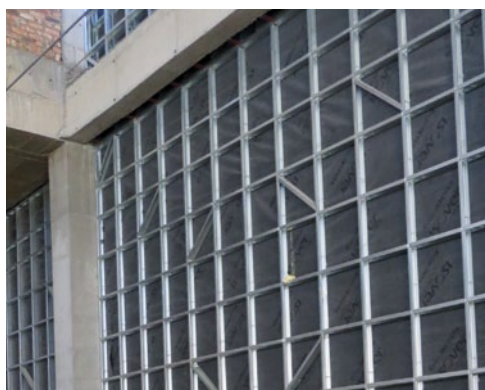
This is one of the largest single phase building projects in the southern hemisphere and the building programme required the building envelope to be closed within a few months. The required installation dates were met on time and contributed significantly to keeping the project on track.

The structural framing consists of 0.8mm LSF, 90mm x 38mm cold-formed lip-channel profiles, assembled into wall panels on site, with typical 600mm x 600mm CTC grids. Frames placed slab to ceiling, column to column.

Cold-formed thin gauge steel frames were used for the light weight design, accuracy and speed of

installation. What makes this project special is the architect's requirement for protruding, horizontal plaster bands, some more than 100 meters in length, to wrap the building and be exactly in line, at a height of up to 25 meters. Furthermore, a high R-value was required for the external cladding to achieve the required energy efficiency (reduced need for heating and cooling). From an environmental perspective, energy saving ETICS (external thermal insulation and cladding system) was used for the external cladding.

The wind load on the roof parapet walls, some 3.m meter in height, was overcome with the reinforcement of wall panels by using a LSF joist, turned on its side. The use of LSF and EPS cladding requires less or no crane time, rapid installation,



JUDGE'S COMMENT:

"If there was any doubt whether LSF has come of age in South Africa, it should be put to rest with the Mall of Africa. LSF was used to effortlessly enclose this massive building – one of the largest malls built in the Southern Hemisphere, and one of the largest LSF projects in Southern Africa to date." – John Barnard



reduced need for cleaning operations, and ensures weight reduction on the super structure resulting in savings of structural concrete. It provides a durable external cladding with low maintenance requirements.

One of the most impressive aspects of this project from the team's perspective was the speed and the ease of construction. One of the biggest technical challenges faced by the engineers included the extra large openings and unusually

high parapet walls. Light Steel Frame has opened up a whole new world for architects – and as they start exploring what is possible, it challenges engineers to become more innovative and creative. The Mall of Africa is a great example of this, and a taste of bigger and more exciting things to come for LSE.

For a video case study of this project visit <http://ow.ly/7eXk303PKDR>

PROJECT TEAM

Client / Owner / Developer:

Atterbury Waterfall Investment Company

Architect:

MDS Architecture

Structural Engineer:

HAGE

Quantity Surveyor:

NWS

Project Manager:

GHC Africa

Main Contractor:

Group 5 / WBHO

Steelwork Contractor and Nominator:

Ohlhorst Light Building Solutions –

jacquesz@ohlhorst.co.za

Steelwork Contractor:

Clotan Steel

Cladding Supplier:

Weber Saint-Gobain

CENTRAL WELDING WORKS

Structural Steel Contractors



Audi Rivonia
Year completed: 2012

Chilli on Top, Rivonia
Year completed: 2015



Builders Warehouse, Rivonia
Year completed: 2013

Chilli Lane, Rivonia
Year completed: 2006



CONTRIBUTING TO THE DEVELOPMENT OF RIVONIA ROAD



TEMPORARY OPD UNIT AT SWAZILAND GOVERNMENT HOSPITAL, MBABANE

JOINT WINNER OF THE LIGHT STEEL FRAME CATEGORY

The first notable LSF project in Mbabane, Swaziland, is an out-patient clinic for the Ministry of Health built by light steel frame building experts, Razorbill Properties, under instruction from the principal agent (PA) Ramashka Architects Swaziland.

The main purpose of the clinic is to serve as a day clinic, which will alleviate the patient load from the neighbouring main hospital. Provision was made for a link bridge between the clinic and the main hospital to facilitate a free flow of pedestrian traffic between the two facilities.

JUDGE'S COMMENT:

"Key to the success of the project was meticulous planning – the LSF was manufactured in Gauteng, 430km away. Due to site constraints, the LSF panels had to be delivered exactly in the sequence they were required on the site – any errors would result in considerable time delays. The architect and client are extremely satisfied with the outcome – so successful was this project that the next major LSF project in Swaziland has already been awarded!" – John Barnard





HANG ANYTHING ON HABITO DRYWALL

INTRODUCING HABITO DRYWALL WITH THE STRENGTH OF BRICK AND THE BENEFITS OF DRYWALL
WWW.HABITO.CO.ZA





Initially Razorbill presented two different LSF building solutions to the client: one was Agrément certified while the other was a rational design to SANS 517 Light steel frame building.

“The benefits of opting for the rational design route was highlighted to the PA and the client,” says Chris Smith Razorbill CEO. “These included the speed of construction, an imperative under these circumstances; site neatness; energy efficiency over the lifetime of the building; and a building process that would minimise interference with patients and ongoing main hospital operations, and more.”

Smith says that the project site had some challenges in terms of the topography, site access roads, sewage lines, storm water systems and available space on site for the offloading and storage of building materials.

The scope of works included the rolling of about 100 tons of 0.8mm and 1.2mm light steel frame sections in Vereeniging and transporting it to Mbabane; the erection of all the LSF panels including 16.5t of heavy structural steel; the erection of 2 198m² of external cladding and 7 512m² of internal lining comprising 15mm thick fire stop and moisture resistant Saint-Gobain gypsum board; and the placement of the roof.

John Barnard, Southern African Light Steel Frame Association (SASFA) director, adds that SASFA has had two senior building inspectors from Swaziland attend its 6-day training course for building contractors, which was presented in March in Gauteng.

“This project is yet another excellent example of the benefits of LSF,” says Barnard. “If you take just the advantage of being able to construct a substantial building right next to a hospital without interrupting the daily operation of that

hospital, it would be reason enough to choose LSF instead of dusty, noisy, heavy, labour intensive masonry construction. If you add the other benefits such as speed of construction and long-term energy efficiency, one can understand why this method has grown so quickly in popularity in South Africa and why the PICC (Presidential Infrastructure Co-ordinating Commission) has decided to encourage the use of IBT’s (Innovative Building Technologies) for all new hospitals, clinics, schools and student accommodation.

For a video case study of this project visit: <http://ow.ly/7eXk303PKDR>

PROJECT TEAM

Client / Owner / Developer:

Micro Projects

Architect:

Ramashka Investment (Pty) Architects and Interior Design

Structural Engineer:

Donnic Engineering

Quantity Surveyor:

Owen Thindwa & Associates

Project Manager and Nominator:

Razorbill Properties 127 (Pty) Ltd – chris@razorb.co.za

Main Contractor:

Sukabadzele Investments T/A Iceberg Contractors

Steelwork Contractor:

Razorbill Properties 127 (Pty) Ltd

Structural Steel Detailer / Detailing Company:

Razorbill Holdings (Pty) Ltd

Cladding Supplier 1:

Saint-Gobain Gyproc

Cladding Supplier 2:

Pelican

Cladding Supplier 3:

Everite

Electrical & Mechanical Engineers:

Mast Consulting Engineers

Photographer (photo competition):

Herman Steynberg, Razorbill Properties 127 (Pty) Ltd

PROJECT TEAM

Client / Owner / Developer:

Old Apostolic Church

Architect:

Old Apostolic Church – Project Office

Structural Engineer:

Ancast North

Quantity Surveyor:

Old Apostolic Church – Project Office

Project Manager:

Old Apostolic Church – Project Office

Main Contractor:

Jan Koster Building

Steelwork Contractor:

Jan Koster Building

Structural Steel Detailer and Nominator:

Trumod – mulder@trumod.co.za

Cladding Supplier:

Safintra



OLD APOSTOLIC CHURCH – MAYFIELD, JOHANNESBURG

PROJECT TEAM

Client / Owner / Developer:

Friedrich & Wilna Strey

Architect, Structural Steel Detailer and Nominator:

Strey Architects – fstrey@streyarchitects.co.za

Structural Engineer:

Hull Consulting Engineers

Project Manager and Main Contractor:

Friedrich Strey

Steelwork Contractor:

Tsipe Staalwerke (Hot rolled steel portal frame manufacturing and erection)

Clotan Steel (Supplier, roller and assembly of light gauge steel frames)

Cladding Supplier:

Bluescope Steel– Southern Africa (through Clotan Steel)

Wet work:

Mega Construction

Aluminium Doors and Windows with Double Glazing:

Alugro Aluminium



THE BARN HOUSE

Photographer (photo competition): Pierre Hugo, Strey Architects

PROJECT TEAM

Client / Owner / Developer:

Old Apostolic Church

Architect:

Old Apostolic Church – Project Office

Structural Engineer:

Ancast North

Quantity Surveyor:

Old Apostolic Church – Project Office

Project Manager:

Old Apostolic Church – Project Office

Main Contractor:

LAJO

Steelwork Contractor:

LAJO

Structural Steel Detailer and Nominator:

Trumod – johan@siteform.co.za

Cladding Supplier:

Safintra



OLD APOSTOLIC CHURCH – IRONSIDE, JOHANNESBURG

PROJECT TEAM

Client / Owner / Developer:

Warrior Construction

Architect:

Leon Smith Architects

Structural Engineer:

ES Professional Consulting Engineers

Project Manager and Nominator:

Techomes Construction (Pty) Ltd –
schalk@techomes.co.za

Main Contractor:

Techomes Construction (Pty) Ltd



ICON BUILDING STELLENBOSCH SQUARE

Photographer (photo competition): Schalk van der Walt

ULTRA-SPAN®
LIGHT GAUGE STEEL TRUSS SYSTEM



The low mass per m² (between 2-10kg) of this roofing system ensures both savings on the supporting structure as well as on transportation and erection costs whilst also being vermin proof and non-combustible.

Large sections of the roof can simply be pre-assembled on the ground and hoisted into position on the walls – making this one of the most viable systems with a large range of applications up to a clear span of 40m.

Supported through a substantial network of licensed truss suppliers, Ultra-Span is equally ideal for all local and export applications where it can be pre-assembled or site assembled.

The non-combustible solution.

MiTek Park, 754 16th Road, Randjespark, Ext. 34, Halfway House, 1685. Midrand (Head Office) Tel: + 27(0) 11 237 8700
Cape Town Tel: 021 905 0244 • Durban Tel: 031 700 6332 • Port Elizabeth Tel: 041 581 7525
email: marketing@mitek.co.za • www.mii.com/southafrica

*MiTek Industries South Africa (Pty)Ltd, a division of the worldwide MiTek Group.

MiTek®
MiTek®
creating the *advantage*



PROJECT TEAM

Client / Owner / Developer:

Private

Architect:

Proarch Draughting

Structural Engineer:

Hull Consulting

Project Manager and Nominator:

Ecoframe – pnicholas@ecoframe.co.za

Main Contractor:

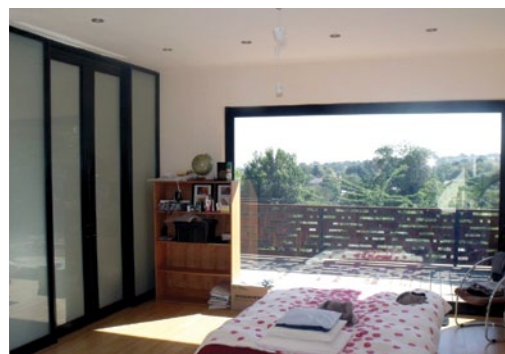
Ecoframe

Steelwork Contractor:

Ecoframe

Structural Steel Detailer / Detailing Company:

Ecoframe



THIRD STORY ADDITION – PARKHURST

Photographer (photo competition): Paul Nicholas, Ecoframe

PROJECT TEAM

Client / Owner / Developer:

Erf 2 Mountain View Properties (Pty) Ltd

Architect:

Quintessential Design

Structural Engineer:

Donnic Engineering

Project Manager:

Razorbill Properties 127 (Pty) Ltd

Main Contractor:

Razorbill Properties 127 (Pty) Ltd

Steelwork Contractor and Nominator:

Razorbill Properties 127 (Pty) Ltd –

Chris@razorb.co.za

Structural Steel Detailer / Detailing Company:

Razorbill Holdings (Pty) Ltd

Cladding Supplier:

Saint-Gobain



BULLFROG PAN

Photographer (photo competition): Herman Steynberg, Razorbill Properties 127 (Pty) Ltd

PROJECT TEAM

Client / Owner / Developer:

Oryx Properties (Pty) Limited

Architect:

Sven-Erik Staby Architects t/a Staby Designs

Structural Engineer:

Donnic Engineering

Quantity Surveyor:

Senekal Allen & Partners

Project Manager and Nominator:

Razorbill Properties 127 (Pty) Ltd –
Chris@razorb.co.za

Main Contractor:

Razorbill Properties 127 (Pty) Ltd

Steelwork Contractor:

Razorbill Properties 127 (Pty) Ltd

Structural Steel Detailer / Detailing Company:

Razorbill Holdings (Pty) Ltd

Cladding Supplier:

Saint-Gobain Gyproc

Electrical Engineer:

SCE Consulting Engineers



MAERUA MALL JOYFULL NOISE

Photographer (photo competition): Herman Steynberg, Razorbill Properties 127 (Pty) Ltd

PROJECT TEAM

Client / Owner / Developer:

Sumitomo Rubber South-Africa (Pty) Ltd –
Project Sunrise

Architect, Structural Engineer and Project Manager:

Bosch Projects (Pty) Ltd

Structural Engineer:

Martin & Associates Consulting Engineers

Quantity Surveyor:

Stefanutti Stocks Building KZN

Main Contractor:

Stefanutti Stocks Building KZN / Ladysmith
Construction (JV)

Steelwork Contractor and Nominator:

Shospec (Pty) Ltd – bjorn@shospec.co.za

Structural Steel Detailer / Detailing Company:

Steel Frame Developments (Pty) Ltd

Cladding Supplier:

CAPCO (Ceiling and Partition Components)



SUMITOMO RUBBER SA

Photographer (photo competition): Björn Kähler, Shospec (Pty) Ltd

PROJECT TEAM

Client / Owner / Developer:

Arena Prop

Architect and Project Manager:

TC Design Project Managers

Structural Engineer:

Vigar and Associates

Structural Engineer (LSF):

Martin & Associates Consulting Engineers

Quantity Surveyor:

MHS Consulting

Main Contractor and Nominator:

Shospec (Pty) Ltd – bjorn@shospec.co.za

Steelwork Contractors:

Shospec (Pty) Ltd

Rebcon Architectural Metalworkers (Internal and external staircases)

Structural Steel Detailer / Detailing Company:

Steel Frame Developments (Pty) Ltd (LSF roll former)

Cladding Suppliers:

CAPCO Ceiling and Partition Components (External fibre cement cladding)

OWA (Internal boarding – firestop boards)

Roof Cladding:

Four Seasons Roofing

Waterproofing:

Grarit Waterproofing & Roofing Specialist cc



CELROSE WAREHOUSE

Photographer (photo competition): Martin Naude, Shospec (Pty) Ltd

PROJECT TEAM

Client / Owner / Developer:

Dabmar Manufacturing Plant, Dundee

Architect:

Architecture Fabrik

Structural Engineers:

Dabmar (Gantry and factory structure)

Martin and Associates (LSF component)

Quantity Surveyor, Project Manager and

Main Contractor and Nominator:

Shospec (Pty) Ltd – bjorn@shospec.co.za

Steelwork Contractors:

Shospec (Pty) Ltd (LSF office block and

workshop cladding)

Churchyard + Umpleby (Pty) Ltd (Gantry)

Structural Steel Detailer:

Barnmaster (Stairs and canopy)

Structural Steel Detailer / Detailing Company:

Dabmar

Structural Steel Detailer (LSF):

Steel Frame Developments (Pty) Ltd

Cladding Supplier:

CAPCO Ceiling and Partition Components

Roof Cladding:

Four Seasons Roofing



DABMAR MANUFACTURING PLANT

Photographer (photo competition): Grant Ballot, Barcode Media



**SAISC 2015
Overall & Tubular
Steel Award
Winner**

www.robor.co.za

**Visit us at
Electra Mining
Africa 2016
Stand A10 - Hall 6
12-16 September
NASREC**

Imagine a world without steel. We Can't...

Established in 1922, Robor is a world-class South African manufacturer and supplier of welded steel tube and pipe. Robor also supplies and adds value to carbon steel coil, plate, sheet and structural profiles. Robor is active in most industries, including Mining, Transport - rail and road, Construction, Engineering, Agriculture, Energy, Water and Automotive through the supply of steel, cold formed steel profiles and associated value added products including galvanizing.



Download Robor's FREE Steel Related APP!



robor



For more information:

Tel: +27 (0)11 971 1600 E-mail: info@robor.co.za www.robor.co.za

PROJECT TEAM

Client / Owner / Developer:
Mangaung Metro Municipality

Architect:
Mangaung Metro Municipality
(Architectural Services Division)

Structural Engineer:
SMEC

Quantity Surveyor:
Du Toit & Putter

Project Manager:
Mangaung Metro Municipality
(Architectural Services Division)

Main Contractor:
MJ Mokoena Construction

Structural Steel Detailer and Nominator:
Siteform Framing Pty (Ltd) –
johan@siteform.co.za

Cladding Supplier:
Safintra

Paint Supplier:
Impa Paints



RODENBECK FIRE STATION

PROJECT TEAM

Client / Owner / Developer:
Grey College

Architect:
Typology Architects cc

Structural Engineer:
WSP

Quantity Surveyors, Principal Agent and Project Managers:
BAU

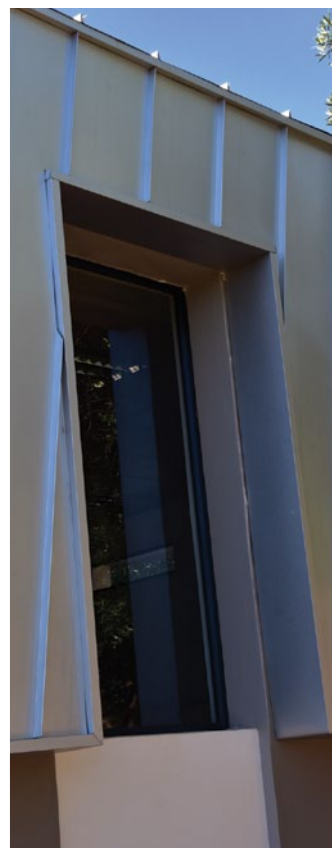
Main Contractor:
Bright Skies Trust

Steelwork Contractor and Nominator:
Siteform Framing Pty (Ltd) –
johan@siteform.co.za

Balustrades Contractor:
A&D Services (Pty) Ltd

Cladding Supplier:
Siteform Framing Pty (Ltd)

Roof Erector:
One Stop Roofing



GREY COLLEGE JOCK MEIRING SCIENCE CENTRE

PROJECT TEAM

Client / Owner / Developer:

Siteform Framing Pty (Ltd)

Architect:

Durand & Oberholzer

Structural Engineer:

Thusabatho Consulting Engineers cc

Main Contractor:

Siteform Framing Pty (Ltd)

Structural Steel Detailer / Detailing Company and Nominator:

Siteform Framing Pty (Ltd) –
johan@siteform.co.za

Cladding Supplier:

Buco



SITEFORM NEW OFFICE

SpanAfrica provides the building market with a composite solution to structural steel needs.



SpanAfrica Steel Structures (Pty) Ltd has been designing, fabricating and installing steel structures for more than 20 years. SpanAfrica supplies multiple sectors including **Industrial, Commercial, Agriculture, Community and Housing.** We actively trade throughout Southern Africa.

Our significant experience, and the energy of our highly motivated teams, enable us to focus on providing clients with quality and cost effective steel structures that are designed to last.



+27 (0) 33 346 2555

sales@spanafrica.co.za | www.spanafrica.co.za



WHERE
REALITY
MEET
DREAMS

SITEFORM FRAMING PTY(LTD)

Bainsville: Bloemfontein

Tel: 051 451 2166

Fax: 086 690 4875

VAT Nr: 405 024 1183

Reg nr: 2007/009295/07

E-mail: info@siteform.co.za

www.siteform.co.za



BuildingEfficiency

PARTNER SPONSORS



Aveng Steel: *More than six decades to be proud of*

Contact: Eileen Pretorius Tel.: +27 (0)11 861 7102 Email: eileen.pretorius@trident.co.za

Aveng Steel is proud to be involved with the SAISC Steel Awards, now for its 4th consecutive year. The company combines African roots – and a proud South African heritage going back over 60 years – with an unwavering commitment to world-class safety and quality.

Aveng Steel is honoured to have directly or indirectly contributed to the entries of the 35th SAISC Steel Awards.

Key milestones in our history

1947

- Aveng Steel Fabrication Vanderbijlpark workshops are established.

1951

- Aveng Steeledale is established and became a leading manufacturer of wire and welded mesh products used in the construction, engineering, mining, security fencing and agricultural industries, with branches across South Africa.

1965

- Lewis Construction, James Thompson, Steeledale and AMCO merge to form LTA Limited.
- LTA lists on the JSE.

1972 – 1977

- Trident Steel is founded.
- Anglovaal Industries (Pty) Ltd (Anglovaal Group) acquires a controlling interest in Trident Steel.

1998 – 2000

- Aveng unbundled out of the Anglovaal Group.
- Trident Steel becomes a wholly owned subsidiary of Aveng.
- Aveng lists on the JSE.
- Aveng Grinaker merges with LTA to form Grinaker-LTA and LTA is delisted from the JSE.
- Steeledale becomes wholly owned subsidiary of Aveng.

2001

- Aveng Trident Steel acquires three Baldwins Automotive Service Centres.

2007 – 2010

- Aveng Steel Fabrication was contracted by Eskom to work on the Medupi power plant expansion.
- Aveng Trident Steel achieves a record profit of R1 billion at 25% EBIT margin.
- Aveng Steel Fabrication is awarded a 30 000t contract for Mainframes and Air Pre-heaters for the Medupi and Kusile power stations.
- Aveng Trident Steel supplies steel for the construction of the Moses Mabhida Stadium and ASF contracted to fabricate the steel for the compression ring and supports for the roof of the stadium.
- Aveng Steel Fabrication upgrades and expands its workshop facility which resulted in a 60 000m² under cover facility.

2011

- Aveng Trident Steel expands its facility in PE with the installation of a new Blanking Press.

2013

- Aveng Steel is formed through the amalgamation of Aveng's three steel businesses namely Aveng Trident Steel, Aveng Steeledale and Aveng Steel Fabrication.

2014

- Aveng Trident Steel installs a new high tensile Cut-to-Length line in Prospecton, mainly for the automotive industry.

Over the years, Aveng Steel has enjoyed sustained success by supplying a vast range of steel products to a number of large Southern African projects. Despite the current economic downturn in the economy, Aveng Steel still demonstrates its commitment by contributing as a strategic partner in developing and growing the South African economy.



Steel Awards 2016 Partner Sponsor

Aveng Steel is proud to
be associated with the
35th
South African Institute of
Steel Construction
Steel Awards.

www.avengsteel.com





ArcelorMittal

ArcelorMittal South Africa

Contact: Kara Jansen van Vuuren Tel.: +27 (0)16 889 4110
Email: kara.jansenvanvuuren@arcelormittal.com

For just over 100 years, since the first steel mill in Africa began operating in Vereeniging, ArcelorMittal South Africa has grown to be the largest steel producer on the continent. Steel products have been the bedrock of industrialisation and are the backbone of our nation's economy and critical to its growth and development. ArcelorMittal is the leader in all major global markets for both long and flat steel products, including automotive, construction, household appliances and packaging. The company is able to develop new technologies through its world-class research and development capabilities, and has sizeable captive supplies of raw materials and outstanding distribution networks.

The steel industry value-chain multiplies the economic value of South African iron ore by a factor of four, and is core to two of the country's industrial ecosystems. South Africa needs a strong primary steel sector more than is generally realised. In developing countries such as ours, there is a positive correlation between GDP growth rate and steel intensity.

ArcelorMittal South Africa continues to contribute significantly to SA's GDP and supports employment for almost 90 000 people in South Africa, directly and indirectly.

Education a key focus area for ArcelorMittal South Africa

Education remains a strategic focus for ArcelorMittal South Africa with more than 80% of our annual corporate social investment spend dedicated to programmes that support both learners and educators. It is seen as a powerful tool for transformation, empowerment and self-actualisation.

The three ArcelorMittal South Africa Science Centres are the company's flagship CSI initiative. When the Sebokeng Science Centre was established a decade ago, the primary aim was to provide additional tutoring to learners in science, technology, English, mathematics and life skills so that they have a better chance of furthering their studies at a tertiary institution. They have helped many young people realise their dreams of acquiring a decent education, but they have also become so much more than that. The ArcelorMittal Science Centres continue to find ways to deepen their work through activities such as the Early Childhood Development Programme and the Computer Literacy courses that are offered to local community members. Beyond this, ArcelorMittal South Africa also collaborates with the Department of Basic Education to help build much-needed school infrastructure. The company has built two state-of-the-art schools, in Mamelodi and Mthatha, using the company's innovative steel technology and architecture.

ArcelorMittal South Africa understands that in order to create a winning nation and build a pipeline of necessary technical skills within a competitive marketplace, it has to invest in education, and has stepped up to this challenge in more ways than one.

ArcelorMittal South Africa takes its responsibility to contribute towards the development of the nation, its people and a safer environment.

Steel AWARDS 2016 Key Service Providers

All Venues

Technical Support: Multimedia Events - Tim Fish, tim@multimedia.co.za, www.multimedia.co.za
Visual Production: Lucid Films - Richard Sherman, richard@lucidfilms.co.za, www.lucidfilms.co.za
Certificate Framing: Omni Arts & Crafts, Viv van Zyl, viv@lantic.co.za

Gauteng

MC & Entertainment: Al Producers - paul@uniquespeakerbureau.com
Event Management Support: Ping Pong Communications - Nadine Piek, nadine@ping-pongevents.co.za
Event Photography: Zoom Corporate Photography, chantal@zoomphoto.co.za, www.zoomphoto.co.za

Western Cape

MC & Entertainment: Nik Rabinowitz - emma@ermstars.co.za
Event Management Support: Attitude Events, Alfreda Coetzee, alfreda@attitude-events.co.za
Event Photography: ProTeknikservices, daniel@proteknikservices.co.za, www.proteknikservices.co.za

Kwazulu Natal

MC & Entertainment: Aaron McIlroy - clare@pinkproductions.co.za
Event Management Support: Extreme Classic Events, Judy Perkins, admin@extremeclassicevents.co.za
Event Photography: Xposure Photography, gail@xposurephotography.co.za, www.xposurephotography.co.za
Technical Support: Black Coffee, Robyn, robyn@black-coffee.co.za, www.black-coffee.co.za



NJR Steel: Listening to our customers

Contact: Greg Mollett Tel.: +27 (0)11 477 5515 Email: gmollett@njrsteel.co.za

Since 1980 NJR Steel has grown from strength to strength by continuously enhancing our product range and capacity to meet increasing customer demands. NJR Steel currently operates six manufacturing businesses, and our products and services are distributed through sixteen NJR Steel trading branches which are strategically located across five provinces, and an Export business servicing our customers in Africa.

The De-Fence Story – “You Can’t Buy a Better Fence for Less”

In order to satisfy customer demands for our branches to stock an affordable range of high security welded mesh fencing products, our **De-Fence** range of fencing products was launched in 2013.

De-FenceMax is designed for front line physical perimeter protection, whilst simultaneously allowing a clear line of sight for CCTV monitoring and electronic detection systems. The welded mesh panels are secured to posts by our unique interlocking fixing system, designed to create a seamless join along the entire length of the post for maximum strength and rigidity. Our modular system allows for a range of extensions, including spikes, razor wire and electric fencing.

njr steel-mesh operates out of a 6 800m² facility with the capacity to draw, straighten and cut to size, indented and smooth rod in various sizes, and

produce welded mesh in either sheets or rolls, and even customised sheets on request.

njr wantsteel our Palisade Fencing division has installed new fully automated machinery which has allowed us to expand our range, increase our capacity and improve on our efficiencies.

njr steel-flat products produce a wide range of value-added products such as in-house de-coiling, slitting and a high-tech CNC cut and drill beam line. The group has also invested in new roofing lines which allow us to roll various thicknesses of galvanised and chromadek colour products to size.

njr steel-reinforcing situated in Kya Sands, is another exciting addition to the group's manufacturing businesses, and our investment in high-tech state-of-the-art equipment has afforded us the opportunity to penetrate the reinforcing cut-and-bend market with confidence.

NJR Steel's geographical footprint and extensive product offering is what makes us “first for steel”, and because we listen to our customers, we continue providing innovative products and value-added solutions to our markets.

MC/ ENTERTAINMENT

KWAZULU NATAL

Master of Ceremonies and Comedian

Aaron McIlroy

Aaron McIlroy is one of South Africa's most popular entertainers with a string of stage blockbusters under his belt.

While Aaron's work in the South African Theatre industry has always focused on getting his audience to laugh until they cry, his creative skills as a fully trained and highly experienced actor/ producer extend far beyond the scope of general Stand-up comedy entertainers. Experience him in action and you'll see why.

Contact:
+27 78 804 4295
macbobproductions@gmail.com
www.wakeupmyboy.co.za

The Future of Steel. Today.

Proudly supplying steel to the following industries: Agriculture | Civils | Construction | Engineering | Fabrication
Manufacturing | Mining | Security | Signage | Truck & Trailer | Hardware & Building Merchants

[Trusted Since 1980]

www.njrsteel.co.za

VISIT OUR WEBSITE TO LOCATE THE BRANCH CLOSEST TO YOU



Genrec

Fabricating Innovative Steel Solutions



Genrec Engineering, a division of Murray & Roberts Ltd.

Contact: Paul Heyns, New Business Development & Sales Executive

Tel: +27 (0)11 876 2322

Fax: +27 (0)86 765 0363

Email: paul.heyns@murrob.com

Private Bag X035, Wadeville, 1422

Website: www.genreceng.co.za

Total Project Solutions

Genrec offers a full range of integrated steel solutions from detailed engineering service, to fabrication of light and heavy structural steel, as well as, erection. The company also has an extensive range of heavy machining capabilities. Genrec's combination of engineering, fabricating, construction, project and site management services, provide clients with a one-stop service. With a proven track record of successful projects and a team of people with both experience and professional recognition Genrec is able to offer total solutions.

Every project is managed, "tracked and traced" through the business operating system, to the detail of single member identification, with progress and completion date, allowing our customers to access erection

prioritisation, pre-assembly guidance and visual progress updates. This capability is currently being used for Projects from 10 tons to 220 000 tons in scale, ensuring detailed tracking at every step of the projects progress.

In June 2016 Genrec incorporated the slogan "Total Project Solutions", replacing its previous vision of being the preferred supplier of world class fabricated steel solutions. Going through change in an attempt to always better our productivity and service delivery, Genrec is focussing on the SPQCP principles of Safety, Productivity, Quality and Cost through People.

As a respected steel fabricator and contractor, the company has worked on numerous infrastructure projects across a range of markets that include power generation, mining, petrochemical, mineral beneficiation, infrastructure, oil and gas and industrial. Genrec prides itself on its pivotal role as a global partner in steel fabrication and heavy machining. The company has taken on numerous projects for clients in countries across the globe, such as Africa, North & South America, Australasia and Middle East and has earned a reputation as an internationally recognised and highly respected professional steel fabricator.

The total area after under roof has been increased to 55 000m² and 19 500m² of open area, well equipped with planning and tracking systems. The fabrication capability is upgraded with CNC equipment, welding processes as well as high volume blasting and painting facilities. Genrec is a business focussed on low cost production while offering the highest quality demanded on the international market.

Genrec's training facility provides development and training of boiler-makers and welders, based on an active production line allowing people in training to be as inclusive as possible to the fabrication works environment.

Genrec

Total Project Solutions

info@genrec.co.za **(011)876-2300**

- Fabrication
- Machining
- Steel Erection



Cnr Dekema & Niemann Road
Wadeville, Germiston,
South Africa, 1428

S P Q C P
Safety, Productivity, Quality and Cost through People

www.genrec.co.za

If you'd like more information on
potential sponsorship opportunities for

Steel Awards 2017
please contact Marle Lotter - marle@saisc.co.za

HOW CAN YOU BECOME A MEMBER OF THE SAISC?

ADVANTAGES OF BECOMING A MEMBER OF THE SOUTHERN AFRICAN INSTITUTE OF STEEL CONSTRUCTION (SAISC)

- Belonging to an organisation that is highly respected both in South Africa and outside the country's borders.
- Accessing the Institute's database and meeting the right people at SAISC events and functions.
- Promoting your organisation to clients, the professions, main contractors and others in the steel industry.
- Obtaining advice on technical, contractual or business matters from the extensive and constantly growing body of knowledge and experience concentrated at the Institute.
- Keeping up to date on new developments and opportunities in the industry.
- Saving by benefitting from member discounts on publications, courses and events.

INDIVIDUALS CAN JOIN IN ONE OF TWO CATEGORIES

Professional Membership is for structural engineers, technologists, technicians, architects, quantity surveyors and project managers who are proficient in structural steel design and construction and are registered with a statutory council for the particular profession.

Associate Individual Membership is for any person who does not qualify for Professional Membership, but wants to be associated with the Institute. This includes Students.

COMPANIES CAN BECOME MEMBERS IN ANY OF THE FOLLOWING CATEGORIES

Steel Producer Membership for companies that are primary steel producers.

Steelwork Contractor Membership for fabricators and erectors of structural steelwork.

Associate Corporate Membership for companies and organisations with an interest in structural steel, including professional firms, clients of the steel construction industry, associations, companies that provide goods or services to the steel construction industry, and other companies in the broader steel industry.

Developing Membership for small, newly established steelwork contractors who need assistance.

**To request a membership application form,
or more information on membership fees,
email Tiana Ferreira - tiana@saisc.co.za**

SAISC MEMBERS

STEEL PRODUCERS

ArcelorMittal South Africa

Representative: Mohamed Adam
Tel: +27 16 889 9111
Mohamed.Adam@arcelormittal.com
www.arcelormittal.com

Columbus Stainless (Pty) Ltd

Representative: Lucien Matthews
Tel: +27 13 247 2805
matthews.lucien@columbus.co.za
www.columbus.co.za

Cape Gate

Representative: Martin Friedman
Tel: +27 16 980 2121
friedmnm@capegate.co.za
www.capegate.co.za

Scaw South Africa (Pty) Ltd

Representative: Dudu Ndlovu
Tel: +27 11 621 1524
d.ndlovu@scaw.co.za
www.scaw.co.za

STEELWORK CONTRACTORS

Eastern Cape

Industrial Services Group

Representative: Errol Thomson
Tel: (043) 707-2700
ethomson@isgeng.co.za
www.isgeng.co.za

Uitenhage Super Steel cc

Representative: Ginkel Venter
Tel: +27 41 922 8060
ginkel@uss.co.za

Free State

Delevex 818 cc t/a BRD Construction

Representative: Francois van der Merwe
Tel: +27 51 434 1238
bulla@brdgroup.co.za
www.brdk.co.za

Gauteng

Bankos Distributors cc

Representative: Greg McCree
Tel: +27 11 026 8359
gregm.bmg@vodamail.co.za
www.bmgprojects.co.za

Bessemer Africa (Pty) Ltd

Representative: Fritz Hoogendyk
Tel: +27 11 762 5341
bessemer@iafrica.com

Betterect (Pty) Ltd

Representative: Nicolette Skjoldhammer
Tel: +27 11 762 5203
nicolette@betterect.co.za
www.betterect.co.za

Boksan Projects cc

Representative: L Boksan
Tel: +27 11 316 2172
laszlo@boksan.co.za

Branch Engineering (Pty) Ltd*

Representative: Shannon Van Den Heuwel
Tel: +27 11 493 1197
shannon@branchengineering.co.za

Cadcon (Pty) Ltd

Representative: Richard Butler
Tel: +27 12 664 6140
richbutler@cadcon.co.za
www.cadcon.co.za

Central Welding Works

Representative: Stephen Horwitz
Tel: +27 12 327 1718
stephen@cwwpta.co.za

Ferro Eleganza (Pty) Ltd

Representative: Chris Narbones
Tel: +27 12 803 8035
admin@ferroe.co.za
www.ferroe.co.za

Genrec Engineering

A division of Murray & Roberts Ltd*

Representative: Fergus Derwin
Tel: +27 11 876 2309
fergus.derwin@murrob.com
www.genreceng.co.za

IVMA Engineering cc

Representative: Mauro Munaretto
Tel: +27 11 814 3124
ivma@ivma.co.za
www.ivma.co.za

Khombanani Steel (Pty) Ltd

Representative: Tim Tasioulas
Tel: +27 11 975 0647
accounts@khombanani.co.za

Linrose Engineering Gauteng (Pty) Ltd*

Representative: Jorge Pereira
Tel: +27 11 827 0314
linrose@icon.co.za
www.linrose.co.za

Louwill Engineering (Pty) Ltd

Representative: Deon Kotzé
Tel: +27 11 818 5186
deon@louwill.co.za
www.louwill.co.za

MAC Engineering cc

Representative: Mino Carniel
Tel: +27 11 814 1834
mino@maceng.co.za
www.maceng.co.za

Magnet Engineering (Pty) Ltd

Representative: Diniz Belo
Tel: +27 11 908 3500
magnetgr@global.co.za
www.magnetengineering.co.za

Midvaal Structures (Pty) Ltd

Representative: Rudi Stoltz
Tel: +27 16 365 5961
rudi@steelstructures.co.za
www.steelstructures.co.za

MM & G Mining & Engineering Services (Pty) Ltd

Representative: Dawie Vos
Tel: +27 11 914 4740
dvos@mmg.co.za
www.mmandg.co.za

MPW Steel Construction (Pty) Ltd

Representative: Nic Tallarico
Tel: +27 11 450 3380
nic@mpwtalmac.co.za
www.mpwtalmac.co.za

NJW Engineering Services cc

Representative: Nick Van Deventer
Tel: +27 12 541 3931
nick@njw.co.za

PH Projects

Representative: Andries Du Plessis
Tel: +27 11 828 0427
engela@phgroup.co.za
www.phgroup.co.za

SE Steel Fabrication (Pty) Ltd

Representative: David J Essey
Tel: +27 11 953 4584
sesteel@icon.co.za

Sectional Poles (Pty) Ltd*

Representative: Phil M Koen
Tel: +27 12 348 8660
pkoen@sectionalpoles.co.za
www.sectionalpoles.co.za

SMEI Projects (Pty) Ltd

Representative: Sandy Pratt
Tel: +27 11 914 4101
afpratt@smei.co.za
www.smei.co.za

Spiral Engineering cc

Representative: Colin Kirkland
Tel: +27 11 474 9119
colin@spiralengineering.co.za
www.spiralengineering.co.za

Steel Band Construction cc

Representative: Steven Smit
Tel: +27 44 874 6554
steelband@icon.co.za

Tass Engineering (Pty) Ltd

Representative: Tim Tasioulas
Tel: +27 11 975 0647
tim@tasseng.co.za
www.tass.co.za

Tegmul Engineering (Pty) Ltd

Representative: Toby Esterhuizen
Tel: +27 16 362 2007
tobie@tegmul.co.za

Trentbridge Engineering cc

Representative: David Hunter
Tel: +27 16 365 5327
trentfab@intekom.co.za

Tudor Engineering & Draughting cc

Representative: Braam Beukes
Tel: +27 11 914 5163
tudora@mweb.co.za

Van Driel's Steel Construction

Representative: Robby van Driel
Tel: +27 16 341 6102/5
vdriel@mweb.co.za

Viva Steelfab Engineering (Pty) Ltd

Representative: Collen Gibbs
Tel: +27 11 454 3405
colleng@vivaeng.co.za

WBHO Services North

Representative: Andrew Breckenridge
Tel: +27 11 265 4000
andrewb@wbho.co.za
www.wbho.co.za

KwaZulu-Natal

Avellini Bros (Pty) Ltd

Representative: Pietro Avellini
Tel: +27 31 464 0421
ravellini@iafrica.com

BNC Projects (Pty) Ltd

Representative: Sunthosh Balchund
Tel: +27 31 902 3777
balchunds@bncprojects.co.za
www.bncprojects.co.za

Churchyard & Umpleby*

Representative: Keith Ball
Tel: +27 31 701 0587
keith@candu.co.za
www.candu.co.za

Cousins Steel International (Pty) Ltd

Representative: Adam Oldfield
Tel: +27 31 312 0992
adam@cousinssteel.co.za
www.cousinssteel.co.za

Impact Engineering cc*

Representative: Douglas Nidd
Tel: +27 32 947 1054
impact@saol.com
www.impacteng.co.za

Ogilvie Engineering

Representative: Allan Olive
Tel: +27 31 700 6489
allan@ogilvieengineering.co.za

Rebcon Engineering (Pty) Ltd

Representative: Warren Butler
Tel: +27 31 705 5851
warren@rebcon.co.za
www.rebcon.co.za

SpanAfrica Steel Structures (Pty) Ltd*

Representative: James Pinnell
Tel: +27 33 346 2555
jamesp@spanafrica.co.za

Mpumalanga**B & T Steel***

Representative: Bryan Wilken
Tel: +27 13 665 1914
marketing@btsteel.co.za
www.btsteel.co.za

Da Costa Construction Welding cc

Representative: Tobie Oosthuizen
Tel: +27 17 647 1130
tobie@dcconstruction.co.za

GPM Services

Representative: Wessel Venter
Tel: +27 71 697 5802/
+27 82 452 9306
wessel@gpms.co.za
www.gpms.co.za

Steval Engineering (Pty) Ltd

Representative: Willie Swanepoel
Tel: +27 13 758 1015
willie@steval.co.za
www.steval.co.za

Tubular Holdings (Pty) Ltd*

Representative: Mike Lomas
Tel: +27 11 553 2012
mlomas@tubular.co.za
www.tubular.co.za

North West**Rutherfords**

Representative: Cecil Rutherford
Tel: +27 18 293 3632
cecilr@rutherfords.co.za
www.rutherfords.co.za

Steel Services and Allied Industries*

Representative: Kevin Harris
Tel: +27 18 788 6652/3
kevinh@steelservices.co.za
www.steelservices.co.za

Western Cape**Inenzo Water (Pty) Ltd**

Representative: Jan Cloete
Tel: +27 21 948 6208
admin@inenzo.com
www.inenzo.com

Mazor Steel cc

Representative: Shlomo Mazor
Tel: +27 21 556 1555
judy@mazor.co.za
www.mazor.co.za

Prokon Services (Pty) Ltd

Representative: Martin Lotz
Tel: +27 21 905 4448
martin@prokonservices.co.za
www.prokonservices.co.za

Union Structural Engineering Works (Pty) Ltd

Representative: Mike N Papanicolaou
Tel: +27 21 534 2251
michael@unionsteel.co.za
www.unionsteel.co.za

STEEL MERCHANTS & SERVICE CENTRES**Gauteng****Aveng Trident Steel***

A division of Aveng Africa (Pty) Ltd
Representative: Eileen Pretorius
Tel: +27 11 861 7102
eileen.pretorius@trident.co.za
www.avengtridentsteel.co.za

Macsteel Service Centres SA (Pty) Ltd*

Representative: Dave Dawkshas
Tel: +27 11 871 0000
dave.dawkshas@macsteel.co.za
www.macsteel.co.za

Macsteel Trading Corporate Services

Representative: Granville Rolfe
Tel: +27 11 871 4677
granville.rolfe@mactrading.co.za

Macsteel VRN

Representative: Jimmy Muir
Tel: +27 11 861 5200
jimmy.muir@vrn.co.za
www.vrnsteel.co.za

NJR Steel Services (Pty) Ltd*

Representative: Greg Mollett
Tel: +27 11 477 5515
gmollett@njrsteel.co.za
www.njrsteel.co.za

SSAB SA (Pty) Ltd

Representative: Raymond Rautenbach
Tel: +27 11 724 5046
Raymond.Rautenbach@ssab.com
www.ssab.com

Stewarts & Lloyds Holdings (Pty) Ltd*

Representative: Mandy de Lange
Tel: +27 11 553 8500
mandyd@sltrading.co.za
www.stewartsandlloyds.co.za

TW Profile Services (Pty) Ltd

Representative: Leon Coetzee
Tel: +27 894 3031
leonc@twprofile.co.za
www.twprofile.co.za

KwaZulu-Natal**Macsteel Trading Durban**

Representative: Marcus Nel
Tel: +27 31 913 2600
marcus.nel@mactrading.co.za

Western Cape**Macsteel Trading Cape Town**

Representative: Maria Francis
Tel: +27 21 950 5506
maria.francis@mactrading.co.za

Transcape Steels (Pty) Ltd

Representative: Carl van Rooyen
Tel: +27 21 534 3211
carlvr@transcape.co.za
www.transcapesteels.co.za

STEEL PRODUCT MANUFACTURERS**Gauteng****Augusta Steel (Pty) Ltd***

Representative: Nico Erasmus
Tel: +27 11 914 4628
nico@augustasteel.co.za
www.augustasteel.co.za

George Stott & Co (Pty) Ltd*

Representative: Johan Venter
Tel: +27 11 474 9150
johanv@geostott.co.za
www.geostott.co.za

Macsteel Tube and Pipe

Representative: Werner Petrick
Tel: +27 11 897 2100
werner.petrick@macsteel.co.za

Mentis Sales*

Representative: Andrew Mentis
Tel: +27 11 255 3200
andrew.mnt@mentis.co.za
www.mentis.co.za

Project Materials Southern Africa (Pty) Ltd*

Representative: Neil Myburgh
Tel: +27 11 465 4247 or
+27 79 898 2086
neil.myburgh@pmpiping.com

Robor (Pty) Ltd*

Representative: David van Staaden
Tel: +27 11 977 2029
davidvs@robor.co.za
www.robor.co.za

RVI Engineered Ventilation

Representative: Eric Whelan
Tel: +27 11 608 4640
ericw@rvi-group.com
www.rvi-group.com

SCAW South Africa (Pty) Ltd

Representative: Donna Penrose
Tel: +27 11 876 2669
dpenrose@scaw.co.za

Swasap (Pty) Ltd

Representative: Derek Anderson
Tel: +27 11 873 6666
derek@swasap.com
www.swasap.co.za

Vital Engineering & Angus Mcleod (Pty) Ltd*

Representative: Dodds B Pringle
Tel: +27 11 898 8500
dodds@gratings.co.za
www.gratings.co.za

Void Pro Manufacturing (Pty) Ltd*

Representative: Andries Botha
Tel: 0861 106 275
info@voidcon.co.za
www.voidcon.co.za

KwaZulu-Natal**SBS Water Systems (Pty) Ltd***

Representative: Desere Ray
Tel: +27 31 716 1820
info@sbstanks.co.za
www.sbsgroup.co.za

Northern Cape**Rufco Engineering***

Representative: Gandeloro Ruffini
Tel: +27 53 313 1651
info@rufco.co.za
www.rufco.co.za

North West**Almec Manufacturing cc***

Representative: Joan Basson
Tel: +27 18 469 3202
joanalmec@gds.co.za
www.almecmanufacturing.co.za

International**Ficep SpA***

Representative: Nick Blackwell
Tel: +39 0332 876 111
nick.blackwell@ficep.it
www.ficepgroup.com

CORROSION & FIRE PROTECTION TO STEEL**Gauteng****Armco Galvanisers (Pty) Ltd**

Representative: Dave Fensham
Tel: +27 11 974 8511
mail@armco.co.za
www.armco.co.za

Bulldog Projects (Pty) Ltd

Representative: Mike Book
Tel: +27 11 825 1070
mike@bulldogprojects.co.za
www.bulldogprojects.co.za

Corrosion Institute of Southern Africa

Representative: Lynette van Zyl
Tel: +27 10 224 0761
manager@corrisa.org.za
www.corrisa.org.za

FSD Fire and Security Distributors (Pty) Ltd

Representative: Come White
Tel: +27 21 510 5258
admin@fire-and-security.co.za
www.fire-and-security.co.za

Hot Dip Galvanizers Association of SA

Representative: Robin Clarke
Tel: +27 11 456 7960
hdgasa@icon.co.za
www.hdgasa.org.za

Pyro-Cote cc

Representative: Trevor Miller
Tel: +27 11 864 5205
pyrocotejhb@pyrocote.co.za
www.pyrocote.co.za

CRANES

RGM Cranes

Representative: Ian O'Hara
Tel: +27 11 422 3690
ian@rgm.co.za
www.rgmcranes.com

CONSULTING ENGINEERS & PROJECT MANAGERS

Gauteng

AECOM SA (Pty) Ltd*

Representative: Siphokuhle Dlamini
Tel: +27 12 421 3500
siphokuhle.dlamini@aecom.com
www.aecom.co.za

Anglo Operations Ltd

Representative: Kurt Waelbers
Tel: +27 11 638 9111
kurt.waelbers@angloamerican.com
www.angloamerican.com

Aurecon South Africa (Pty) Ltd

Representative: Tomme Katranas
Tel: +27 11 305 0300
Tomme.Katranas@aurecongroup.com
www.aurecongroup.com

Arup (Pty) Ltd

Representative: Kimon Comninos
Tel: +27 11 218 7739
kimon.comninos@arup.com
www.arup.com

Bigen Africa Services (Pty) Ltd

Representative: Johann Human
Tel: +27 12 842 8840
johann.human@bigenafrica.com
www.bigenafrica.com

Clearspan Structures (Pty) Ltd

Representative: Jeff Montjoie
Tel: +27 11 823 2402
jmo@clearspan.co.za
www.clearspan.co.za

Consultaurie Design (Pty) Ltd

Representative: Mark Phillips
Tel: +27 11 234 6787
mark@ctauri.com

DRA Projects SA (Pty) Ltd

Representative: David Haines
Tel: +27 11 202 8600
david.haines@draglobal.com
www.draglobal.com

EDS Engineering Design Services (Pty) Ltd

Representative: Hergen Fekken
Tel: +27 12 991 1205
hergen@edseng.co.za
www.edseng.co.za

Fluor South Africa (Pty) Ltd

Representative: Carlo Zambon
Tel: +27 11 233 3400
carlo.zambon@fluor.com
www.fluor.com

Group Five Projects (Pty) Ltd

Representative: Rowan Cashel
Tel: +27 10 060 1730
rcashel@groupfive.co.za
www.groupfive.co.za

Hatch Africa (Pty) Ltd

Representative: Mome Fourie
Tel: +27 11 239 5422
mome.fourie@hatch.com
www.hatch.com

Imbabala Contractors

Representative: Michael Mamotte
Tel: +27 11 902 2952
mikem@imbacontra.co.za
www.imbacontra.co.za

International Drafting Services (Pty) Ltd

Representative: Frans Vivier
Tel: +27 11 472 4466
frans@idrafting.co.za

Malani Padayachee and Associates (Pty) Ltd (shortened version MPA (Pty) Ltd)

Representative: Malani Padayachee-Saman
Tel: +27 11 781 9710
admin@mpaconsulting.co.za
www.mpaconsulting.co.za

MDS NDT Consultants (Pty) Ltd

Representative: Shaun Green
Tel: +27 11 615 7240
info@mds-skills.co.za
www.mds-skills.co.za

Phenix Construction Technologies (Pty) Ltd*

Representative: Kobus Marais
Tel: +27 11 395 1520
KOBUSM@phenix.co.za
www.phenix.co.za

Pollock Williams James & Partners cc

Representative: Tim James
Tel: +27 11 679 2282
pwp@iafrica.com

Tenova TAKRAF Africa

A Division of Tenova Mining and Minerals (Pty) Ltd

Representative: Richard Späth
Tel: +27 11 201 2347
richard.spath@tenova.com
www.tenovagroup.com

WAH Engineering (Pty) Ltd

Representative: Graham Cross
Tel: +27 11 888 2150
grahamc@waheng.co.za

WSP Group Africa (Pty) Ltd

Representative: John Truter
Tel: +27 11 300 6000
john.truter@wspgroup.co.za
www.wspgroup.co.za

KwaZulu-Natal

DMV Richards Bay (Pty) Ltd

Representative: Le Roux Fourie
Tel: +27 35 789 1828
admin@dmvrb.co.za

Gavin R Brown & Associates

Representative: Gavin R Brown
Tel: +27 31 202 5703
gavbrown@global.co.za
www.gavbrown.co.za

Young & Satharia Structural & Civil Engineering

Representative: Rob Young
Tel: +27 31 207 7252
rob@yands.co.za
www.yands.co.za

Mpumalanga

Bulkcon cc

Representative: Desmond Enslin
Tel: +27 17 811 7520
desmond@bulkcon.co.za
www.bulkcon.co.za

Hlakani Engineering Services (Pty) Ltd

Representative: Gerhard Holtshauzen
Tel: +27 13 246 1824
gerhard.holtshauzen@hlakani.co.za
www.hlakani.co.za

Ijobane Projects (Pty) Ltd

Representative: Willie Greyling
Tel: +27 13 243 4390
willie@glps.co.za
www.glps.co.za

Lategan Bouwer Civil & Structural Engineers

Representative: Anton Van Dyk
Tel: +27 17 634 4150
avandyk@latbou.co.za
www.latbou.co.za

Western Cape

By Design Consulting Engineers

Representative: Barend Oosthuizen
Tel: +27 83 287 1995
barend@bydesign.org.za
www.bydesign.org.za

Bergstan South Africa

Representative: Alan Davies
Tel: +27 21 487 4900
alan@bergstan.co.za
www.engineer.co.za

Kantey & Templer (Pty) Ltd

Representative: Chris Von Geusau
Tel: +27 21 405-9600
chrisvg@kantey.co.za
www.kantey.co.za

Mondo Cané cc

Representative: Rob Chalmers
Tel: +27 21 852 2447
rob@mondocane.co.za
www.mondocane.co.za

SMEC South Africa (Pty) Ltd

Representative: John Anderson
Tel: +27 21 417 2900
john.anderson@smec.com
www.smec.com

WorleyParsons RSA

Representative: Mushir Khan
Tel: +27 11 218 3000
mushir.khan@worleyparsons.com
www.worleyparsons.com

International

Walsh Draughting Services

Representative: Donal Walsh
Tel: 00 353 57 8624913
walshds@eircom.net
www.walshds.ie

CIVIL ENGR CONTRACTORS

Basil Read (Pty) Ltd *

Representative: Jocelyn du Plessis
Tel: +27 11 418 6372
jduplessis@basilread.co.za
www.basilread.co.za

Maccaferri SA (Pty) Ltd*

Representative: Adriano Gilli
Tel: 087 742 2710
Adriano.gilli@maccaferri.co.za
www.maccaferri.co.za

SUPPLIERS OF GOODS AND SERVICES TO THE INDUSTRY**Cadex Systems SA (Pty) Ltd***

Representative: John Swallow
Tel: +27 11 463 1857
johnswallow@cadexsa.com
www.cadexsa.com

Bentley Systems South Africa (Pty) Ltd

Representative: Tennyson Maimbo
Tel: +27 11 253 3016
tennyson.maimbo@bentley.com
www.bentley.com

Dram Industrial Painting Contractors

Representative: Martin Gossayn
Tel: +2711 660 7594
admin@dram.co.za
www.dram.co.za

First Cut (Pty) Ltd

Representative: Steve Van Wyk
Tel: +27 11 614 1112
stevev@firstcut.co.za
www.firstcut.co.za

Lindapter International

Representative: Louise Foster
Tel: +44 (0) 1274 521444
lfoster@lindapter.com
www.lindapter.com

Peddinghaus Corporation of South Africa

Representative: Ian Walker
Tel: +44 771 442 9860
ian@peddinghaus.co.uk
www.peddinghaus.com

Retecon (Pty) Ltd

Representative: Hans-Peter Neth
Tel: +27 11 976 8600
neth@retecon.co.za
www.retecon.co.za

Southey Holdings (Pty) Ltd

Representative: Ben Garrad
Tel: +27 11 579 4600
bgarrad@southey.co.za
www.southeycontracting.co.za

Voortman Steel Machinery B.V.

Representative: Pieter van Grol
Tel: +31 548 53 63 73
p.vangrol@voortman.net
www.voortman.net

POLASA MEMBERS**ARB Electrical Wholesalers (Pty) Ltd**

Representative: Jason Burke
Tel: +27 31 910 0201
jasonb@arb.co.za
www.arb.co.za

Avlock International (Pty) Ltd

Representative: Tommy Holmes
Tel: +27 11 748 7000
tommy@avlock.co.za
www.avlock.co.za

Babcock Ntuthuko Powerlines

Representative: Gary Whalley
Tel: +27 11 739 8240
gary.whalley@babcock.co.za
www.babcock.co.za

CIS Engineering (Pty) Ltd

Representative: Christo Marais
Tel: +27 16 422 0082
christo@cisengineering.co.za
www.cisengineering.co.za

Consolidated Power Projects (Pty) Ltd

Representative: Leon Heymans
Tel: +27 11 805 4281
leon@conco.co.za
www.conco.co.za

Cullin Africa (Pty) Ltd

Representative: Krish Chetty
Tel: +27 11 848 1400
krish@cullin.co.za
www.cullin.co.za

Dyambwini Construction & Project Solutions

Representative: Vincent Kanyongolo
Tel: +27 12 332 5898
vincent@dyambwini.co.za
www.dyambwini.co.za

IMAB Power

Representative: Fleming Adamson
Tel: +27 11 814 6248
fleming.adamson@imab.co.za
www.imab.co.za

KEC International Limited

Representative: Sumant Srivastava
Tel: +27 11 018 4000
srivastavas@kecrpg.com
www.kecrpg.com

McWade Productions (Pty) Ltd

Representative: Marc Hindle
Tel: +27 11 316 2262
march@mcwade.co.za
www.mcwade.co.za

Metpress (Pty) Ltd

Representative: Sagren Moodley
Tel: +27 11 825 5334
sagren@metpress.co.za
www.metpress.co.za

Mkhulu Electro Distribution Projects (Pty) Ltd

Representative: Marcello Lamperini
Tel: +27 11 814 4169
info.mkhulu@oribi.co.za

Pfisterer (Pty) Ltd

Representative: Geoff Myburgh
Tel: +27 33 397 5409
geoff.myburgh@pfisterer.co.za
www.pfisterer.co.za

Powerpro Technologies & Training Facility

Representative: Ernest Coetzee
Tel: +27 11 739 4200
ernest@powerpro.co.za
www.powerpro-training.com

Preformed Line Products

Representative: John Buyers
Tel: +27 33 397 5800
johnb@preformedsa.co.za
www.preformedsa.co.za

Ramagale Holdings (Pty) Ltd

Representative: Peter Ramaite
Tel: +27 11 234 4045
peter@ramagale.co.za
www.ramagale.co.za

SCAW Metals Group

Representative: Dudu Ndlovu
Tel: +27 11 621 1524
d.ndlovu@scaw.co.za
www.scaw.co.za

Siyazama Professional Management Services

Representative: Enrica Furlan
Tel: +27 11 814 4169
info@siyazama-training.co.za

Structa Technology (Pty) Ltd

Representative: Hercules Rossouw
Tel: +27 16 362 9100
hercules@structa.co.za
www.structa.co.za

Tel-Screw Products (Pty) Ltd

Representative: Ronald Teleng
Tel: +27 11 917 9710
info@telscrew.co.za
www.telscrew.co.za

TESMEC SA (Pty) Ltd

Representative: Simone Fiorini
Tel: +27 11 397 2386
info@tesmecsa.co.za
www.tesmecsa.co.za

TLE (Pty) Ltd

Representative: Adele van der Westhuizen
Tel: +27 11 814 3522
adele@tle.za.net
www.tle.za.net

The Aluminium Federation of South Africa

Representative: Mark Krieg
Tel: +27 11 455 5553
markk@afsa.org.za
www.afsa.org.za

Tricom Structures (Pty) Ltd – A subsidiary of Robor

Representative: Nick van der Mescht
Tel: (011) 971-1600
nvdmescht@tricom1.co.za
www.tricom1.co.za

EMERGING MEMBER**Down Low Construction & Projects 56 cc**

Representative: Calvin Mutize
Tel: +27 84 993 5599
dlc56projects@gmail.com
www.dlcgroup.co.za

SAMCRA MEMBERS**ALLIED PRODUCTS****AMPA Group (Pty) Ltd**

Representative: Rudi van Niekerk
Tel: +27 11 398 8000
rudiv@ampa.co.za
www.ampa.co.za

Ash & Lacy South Africa (Pty) Ltd

Representative: Dion Marsh
Tel: +27 11 792 9283
dion.marsh@ashandlacy.com

Kare Industrial Suppliers (Pty) Ltd

Representative: Reitze Hylkema
Tel: +27 11 334 0922
reitze@kare.co.za
www.kare.co.za

PIA Solar SA (Pty) Ltd

Representative: Colin Muller
Tel: +27 41 366 1911
colin.muller@piasolar.com
www.piasolar.com

Rigifoam (Pty) Ltd

Representative: Kevan Riley
Tel: +27 11 421 0313
kevan@rigifoam.com
www.rigifoam.com

Saint Gobain Construction Products South Africa (Pty) Ltd

Isover Division
Representative: Bernard Asquith
Tel: +27 12 657 2800
bernard.asquith@isover.co.za
www.isover.co.za

ASSOCIATE**Property Diagnostic Services**

Representative: Geoff Legward
Tel: +27 21 975 1559
geoff@propertydiagnostics.co.za

CONTRACTOR**Chartwell Roofing (Pty) Ltd**

Representative: Mike Read
Tel: +27 83 625 1557
mike@chartwellroofing.co.za
www.chartwellroofing.co.za

Doublejack Construction (Pty) Ltd

Representative: Jason Knight
Tel: +27 11 828 3453
jason@doublejack.co.za

Roofline (Pty) Ltd

Representative: Terry Thorp
Tel: +27 11 900 3250
tthorp@roofline.co.za
www.roofline.co.za

Tate & Nicholson

A division of Southey Holdings (Pty) Ltd

Representative: John Humby
Tel: +27 11 464 0910
jhumby@southey.co.za
www.southey.co.za

PRODUCER/MILL

ArcelorMittal South Africa

Representative: Jan Kotze
Tel: +27 16 889 9111
jan.kotze@arcelormittal.com
www.arcelormittal.com

BlueScope Steel SA (Pty) Ltd

Representative: Arno Hanekom
Tel: +27 21 442 5420
arno.hanekom@bluescopesteel.com
www.bluescopesteel.co.za

SAFAL Steel (Pty) Ltd

Representative: Raghu Raghuram
Tel: +27 31 782 5500
mraghuram@safalsteel.co.za
www.safalsteel.co.za

PROFILER/MANUFACTURER

BSi Steel Limited

Representative: Viv Proudfoot
Tel: +27 33 846 2222
viv@vmarketing.biz
www.bsisteel.com

Clotan Steel*

Representative: Danie Joubert
Tel: +27 16 986 8000
daniej@clotansteel.co.za
www.clotansteel.co.za

Global Roofing Solutions (Pty) Ltd

A Division of Consolidated Steel Industries (Pty) Ltd*

Representative: Johan van der Westhuizen
Tel: +27 11 898 2902
johan@globalroofs.co.za
www.global-roofing-solutions.co.za

Heunis Steel (Pty) Ltd

Representative: Anton Heunis
Tel: +27 12 372 0021
anton@heunis.co.za
www.heunis.co.za

Macsteel Roofing

Representative: Dave Reid
Tel: +27 11 878 7500
dave.reid@macroofing.co.za

Safintra South Africa (Pty) Ltd*

Representative: Rainer Straussner
Tel: +27 11 944 6800 / 0861 723 542
rainers@safintra.co.za
www.safintra.co.za

SASFA MEMBERS

MAJOR MATERIAL SUPPLIERS

ArcelorMittal South Africa

Producer of steel
Melvin Hickers
Tel: +27 16 889 4046
Melvin.hickers@arcelormittal.com
www.arcelormittal.com

Everite Building Products (Pty) Ltd

Producer of fibre cement board
Andrew de Klerk
Tel: +27 11 439 4400
adeklerk@groupfive.co.za
www.everite.co.za

Marley Building Systems

Supplier of gypsum board
Annemarie Robertson
Tel: +27 11 82 568 1358
annemarie.robertson@marley.co.za

Saint-Gobain Gyproc SA (Pty) Ltd

Producer of gypsum board
Tumelo Nyepela
Tel: +27 12 657 2800
tumeloabel.nyepela@saint-gobain.com
www.gyproc.co.za

Saint-Gobain Isover

Producer of insulation products
Atisha.Gopichund-Lutchman
Tel: +27 12 657 2800
Atisha.Gopichund-Lutchman@saint-gobain.com
www.isover.co.za

OTHER MATERIAL AND COMPONENT SUPPLIERS

Kare Industrial Suppliers

Distributor of fasteners
Reitze Hylkema
Tel: +27 11 941 3170
reitze@kare.co.za
www.kare.co.za

Simpson Strong-Tie South Africa (Pty) Ltd

Distributor of fasteners and bracketry
Francois Basson
Tel: +27 82 895 6513
fbasson@strongtie.com
www.strongtie.com

LSFB MANUFACTURERS

Allenby Housing cc

Planning, design, development and manufacture of modular building solutions
Gonaseelan Govender
Tel: +27 31 309 5561
intercon@iafrica.com
www.containerhouses.com

Dezzo Roofing (Pty) Ltd

Profiler and assembler
Brandon Harding
Tel: +27 31 713 6571
brandon@dezzo.co.za
www.dezzoroofing.co.za

Genesis Civils cc

Property development solutions
Jean Pierre Louw
Tel: +27 41 372 2113
jp@genesiscivils.com
www.genesiscivils.com

Kwikspace Modular Buildings Ltd

Profiler and assembler
David van Zyl
Tel: +27 11 617 8000
davidvz@kwikspace.co.za
www.kwikspace.co.za

MiTek Industries South Africa (Pty) Ltd

LSF roof trusses, floors and panels
Uwe Schluter
Tel: +27 11 237 8700
marketing@mittek.co.za
www.mii.com/southafrica

Monl Frames (Pty) Ltd

LSFB systems and trusses
Tshepo Mashigo
Tel: +27 16 455 3344
tshepom@monlframes.co.za
www.monlframes.co.za

Pholaco (Pty) Ltd

LSF manufacturer and assembler
Andre Schlunz
Tel: +27 21 577 2601
andre@pholaco.com
www.pholaco.com

Rajan Harinarain Construction (Pty) Ltd

Manufacturer
Rajan Harinarain
Tel: +27 74 184 8881
rhconstruction1@gmail.com
www.rhconstruction1.co.za

Razorbill Properties 127 (Pty) Ltd

Manufacturers and erectors of LSFB
Vernon van der Westhuizen
Tel: +27 16 423 1749/50
vernon@razorb.co.za
www.razorb.co.za

Site Form Roofing and Framing

Profiler and assembler
Johan Fourie
Tel: +27 51 451 2166
info@siteform.co.za
www.siteform.co.za

Steel Frame Developments

Roll-forming and steel frame kits supplied
Ryan Minietti
Tel: +27 83 296 3078
ryan@steelfd.co.za
www.steelfd.co.za

Superb Home & Kitchen Manufacturers

LSFB cold formed roof sheeting, purlins & battens manufacturer
Thandi Makae
Tel: +27 51 534 0062
thandimakae@webmail.co.za

Trumod (Pty) Ltd

Manufacturer of light steel frames and trusses
Mulder Kruger
Tel: +27 11 363 1960
mulder@trumod.co.za
www.trumod.co.za

WV Construction cc

Profiler and erector
Antonie Vermaak
Tel: +264 61 42 7700
a.vermaak@wv-construction.com
www.wv-construction.com

SERVICE CENTRES AND DISTRIBUTORS

BlueScope Steel SA (Pty) Ltd

Arno Hanekom
Tel: +27 21 442 5420
arno.hanekom@bluescopesteel.com
www.bluescopesteel.com

Clotan Steel*

Steel service centre
Danie Joubert
Tel: +27 16 986 8000
daniej@clotansteel.co.za
www.clotansteel.co.za

Framecad

Distributor of LSFB equipment
Ashley Fransman
Tel: +27 11 064 5759
ashleyf@framecad.com
www.framecad.com

Global Innovative Building Systems

Distributor of cladding and insulation materials
Tammy Bywater
Tel: +27 11 903 7080
tammy@gissa.co.za
www.gissa.co.za

Global Specialised Systems KZN (Pty) Ltd

Distribute and manufacture insulations products and ducted air cons
Thys Visagie
Tel: +27 31 468 1234
gmknz@globaldbn.co.za
www.globalsystems.co.za

Scottsdale

Distributor of LSF equipment
Steve Cullender
Tel: +27 11 486 4195
steve.cullender@scottsdalesteelframes.com
www.scottsdalesteelframes.com

United Fibre Cement Company

Distributor of fibre cement products
Leon Bekker
Tel: +27 21 933 0052
leon@ufcc.co.za
www.ufcc.co.za

DESIGN CONSULTANTS**Bapedi Consulting Engineers**

Structural engineers
Boitumelo Kunutu
Tel: +27 11 326 3227
tumi@bapediconsult.co.za

By Design Consulting Engineers

Structural engineer
Barend Oosthuizen
Tel: +27 21 883 3280
barend@bydesign.org.za

C-Plan Structural Engineers (Pty) Ltd

Structural engineer
Cassie Grobler
Tel: +27 11 472 4476
cassie@cplan.co.za

Hage Project and Consulting Engineers

Structural engineer
Gert Visser
Tel: +27 16 933 0195
gert@hage.co.za

Hull Consulting Engineers cc

Structural engineer
Mike Hull
Tel: +27 11 468 3447
hull@iafrica.com

Martin & Associates

Consulting Engrs
Tel: +27 31 266 0755
ibu@martinjw.co.za

ASSOCIATE MEMBERS**AAAMSA Group**

Promotion of fenestration, insulation and ceiling systems
Hans Schefferlie
Tel: +27 11 805 5002
aaamsa@iafrica.com

ABSA Bank

Provider of building finance
Deon Brits
Tel: +27 11 350 3287
deonbr@absa.co.za

CSIR (Built Environment)

National building research institute
Llewellyn Van Wyk
Tel: +27 12 841 2677
lvwyk@csir.co.za
www.csir.co.za

HDGASA

Promotion of hot dip galvanized steel sheet
Robin Clarke
Tel: +27 11 456 7960
robin@hdgasa.org.za
www.hdgasa.org.za

IZASA

Promotion of the use of zinc
Rob White
Tel: +27 83 456 4989
robwhite@icon.co.za
www.izasa.org

National Association of Steel-Framed Housing Inc New Zealand (NASH)

Carl Davies
www.nashnz.org.nz

National Association for Steel framed housing Australia (NASH)

Ken Watson
www.nash.asn.au

Pretoria Institute for Architecture

Institute for architects
Maureen Van Wyk
Tel: +27 12 341 3204
admin.pia@saia.org.

Standard Bank

Provider of home loans
Johann Strydom
Tel: +27 11 631 5977
Johanji.strydom@standardbank.co.za

Steel Framing Alliance (USA)

Mark Nowak
www.steel framingalliance.com

University of Cape Town

Dept of Civil Engineering
Educational
Sebastian Skatulla
Tel: +27 21 650 2595
sebastian.skatulla@uct.ac.za

University of Pretoria

Faculty of Engineering
Educational
Riaan Jansen
Tel: +27 12 420 4111
riaan.jansen@up.ac.za

University of the Witwatersrand

School of Mechanical Engineering
Educational
Terrance Frangakis
Tel: +27 11 717 7333
terrance.frangakis@wits.ac.za

BUILDING INDUSTRY**ABE Consulting Services (Pty) Ltd**

Ceilings, partitions and LSF
Aderito Vieira
Tel: +27 11 663 9100
abe@ambient.co.za
www.abecontracting.co.za

Abbeycon (Pty) Ltd

Ceiling, partitions and commercial refurbishment
Carlos Pinho
Tel: +27 11 823 2950
carlos@abbeycon.co.za
www.abbeycon.co.za

Bakhusele Business Solutions (Pty) Ltd

Construction and civil works
Edwin Mkhabela
Tel: +27 13 755 4480
edwin@bakhusele.co.za
www.bakhusele.co.za

Dalmar Construction (Pty) Ltd

LSF Construction and plant hire
Pieter Reyneke
Tel: +27 11 915 0891
info@dalmar.co.za
www.dalmar.co.za

Delca Systems (Pty) Ltd

Project management, civil and structural engns, QS
Dr Mercy Mafara
Tel: +27 31 266 5900
info@delca.co.za
www.delca.co.za

E4 Construction (Pty) Ltd

Building and construction
David Welsh
Tel: +27 11 465 5200
+27 82 688 9988
david@e4construction.com
www.e4construction.com

Ecoframe

Building and construction
Paul Nicolas
Tel: +27 16 423 1750
pnicolas@ecoframecc.co.za
www.ecoframecc.co.za

Group Five Housing (Pty) Ltd

Developer and builder
Paul Thiel
Tel: +27 10 060 1555
pthiel@groupfive.co.za
www.groupfive.co.za

InnoGreenBuild (Pty) Ltd

LSFB Construction
Mike van Rensburg
Tel: +27 71 850-4992
innogreenbuild@gmail.com

Ithala Construction cc

Building/construction
Martie Weppenaar
Tel: +27 31 462 8168
ithalacons@iwebz.co.za

J and S Building and Civils cc

LSF Construction, building and civils
Hashim Amra
Tel: +2783 302 6768
hashim@jnsbuildingandcivils.com
www.jnsbuildingandcivils.com

Kevamy Investments cc

Specialized joinery and Supply of equipment
Jacqueline Madombwe
Tel: +27 76 112 4808
jmadombwe@gmail.com

Lakeshore Trading 102 cc

Construction and training
Linky Delisile
Tel: +27 31 706 3695
deli@lakeshore.co.za

Legna Creative Enterprises cc

Erector and builder
Angel Mazubane
Tel: +27 31 563 1371
angel@legnacreative.co.za
www.legnacreative.co.za

LGS Consult

LSFB Consultant
Charl van Zyl
Tel: +27 82 881 6879
charl@silcor.co.za

Ohlhorst Africa LBS (Pty) Ltd

Installing LSF material
Sergio Ferreira
Tel: +27 12 327 2411
info@ohlhorst.co.za
www.ohlhorst.co.za

PropUs Investment

Construction
Ntobeko Ngcobo
Tel: +27 31 702 5919
info@propus.co.za
www.propus.co.za

SAISC AWARDS 2016 MEMBERSHIP

Shospec (Pty) Ltd

LSFB builder, ceilings, partitions, turn-key projects
Bjorn Kahler
Tel: +27 33 386 0100
bjorn@shospec.co.za
www.shospec.co.za

SMC Africa

Detailing, design and construction
Andrew Dewar
Tel: +27 82 491 2717
andrew@smcafrica.com
www.smcafrica.com

Stag Homes cc

Developer and Project manager
John Schooling
Tel: +27 21 794 0904
johns@stagprop.com
www.stagprop.com

Top Plan

Construction and alterations
Sarel Oberholzer
Tel: +27 21 903 3189
info@topplan.co.za
www.topplan.co.za

Zamadunga Business Enterprise

Building, construction and renovation
Thandi Ngcobo
Tel: +27 31 701 5431
info@zamadunga.co.za

Zimbabwean Framers Pvt Ltd

LSF Erection and renovation
Quintin Bruff
Tel: +263 772 2881 05
quintinbruff@gmail.com

ASTPM MEMBERS

Africa Pipe Industries

Jan Jansen van Nieuwenhuizen
Tel: +27 16 971 1908
janjvn@africapipe.co.za
www.africapipe.co.za

Augusta Steel (Pty) Ltd

Paul Bowman
Tel: +27 11 914 4628
paulb@augustasteel.co.za
www.augustasteel.co.za

Barnes Tubing Industries (Pty) Ltd

Andy Smith
Tel: +27 11 923 7340
andy@barnestubing.co.za
www.barnestubing.co.za

Hall Longmore (Pty) Ltd

Kenny Van Rooyen
Tel: +27 11 874 7300
kenny.vanrooyen@hall-longmore.co.za
www.hall-longmore.co.za

Macsteel Tube and Pipe (Pty) Ltd

Werner Petrick
Tel: +27 11 897 2100
werner.petrick@mactube.co.za
www.macsteel.co.za

New Concept Mining (Pty) Ltd

Charles Hart
Tel: +27 11 494 6000
charlesh@ncm.co.za
www.ncm.co.za

Pro Roof Steel Merchants (Pty) Ltd

Peter Potgieter
Tel: +27 16 450 5800
peter@prorooof.co.za
www.prorooof.co.za

STEASA MEMBERS

ArcelorMittal SA Seamless Tube Division

Roche Bester
Tel: +27 16 889 8802
roche.bester@mittalsteel.com
www.mittalsteel.com

Barnes Tubing Industries (Pty) Ltd

Andy Smith
Tel: +27 11 923 7340
andy@barnestubing.co.za
www.barnestubing.co.za

Hall Longmore (Pty) Ltd

Jose de Castro
Tel: +27 11 874 7336
jose.decastro@hall-longmore.co.za
www.hall-longmore.co.za

Honingcraft (Pty) Ltd

Gerhard Hauptfleisch
Tel: +27 11 824 5320
gerhard@honingcraft.co.za
www.honingcraft.co.za

Pro Roof Steel Merchants (Pty) Ltd

Peter Potgieter
Tel: +27 16 450 5800
peter@prorooof.co.za
www.prorooof.co.za

SAISC HONORARY MEMBERS

Cyril Herr

Dick Griffioen

Don Walker

DA Walker & Associates

Eric Samson

Macsteel Service Centres SA (Pty) Ltd

Ernie Behr

Geoff Krige

WAH Engineering (Pty) Ltd

Gwilliam Bodill

Hennie de Clercq

University of Stellenbosch

Hennie Esterhuizen

Group Five Projects (Pty) Ltd

Jeff Chegwidan

Jim Guild

SA Institute of Welding

John Barnard

SA Light Steel Frame Building Association

John Swallow

Cadex Systems SA (Pty) Ltd

John van Rensburg

Kobus de Beer

SAISC

Louis Breckenridge

CEA

Rob Young

Young & Satharia Structural & Civil Engineers

Spencer Erling

SAISC

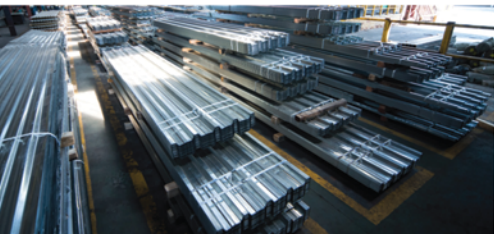
Trevor Geach

* ALSO A MEMBER OF



MACSTEEL

Offering you the most comprehensive range of steel products and value added processing services in Africa



- Aluminium
- Blanking
- Bright Bar
- Castellated Beams
- Cellular Beams
- Cold Form Sections
- Cold Saw Cutting
- Conveyance Pipe
- Corrugated Roofing
- Drilling
- Expanded Metal
- Fencing Products
- Flame Cutting
- Flanges
- Fluid Control Systems
- Freestock
- Galvanized Sheets
- Galvanized Tubing
- Grating
- Guillotining
- Harveytiles
- Heat Treatment Services
- High Strength Steels
- Hollow Bar
- IBR Roofing
- Laboratory Services
- Laser Cutting
- Laser Cut Tubing
- Lipped Channels
- Open Sections
- Palisade Fencing
- Pipe Fittings
- Plasma Cutting
- Plates
- Plate Bending & Rolling
- Pre-coated Sheets
- Pressure Vessel Steels
- Profile Sections
- Purlins
- Rails
- Reinforcing
- Roofing Solutions
- Sheets
- Slitting
- Special Steels
- Stainless Steels
- Stretcher Leveling
- Structural Steels
- Technical Consultancy
- Tool Steels
- Tubing
- Valves & Actuators
- Wear Resistant Steels
- Zincalume Roof Sheets

Best Quality, Service, Value!

Like us on



MACSTEEL Service Centres SA (Pty) Ltd

www.macsteel.co.za



SERVICE CENTRES SA

MACSTEEL Africa's leading steel supplier



Aki Luntamo,
BIM Master, Sweco, Tekla
BIM Awards 2015 winner

In the hands of the BIM master, architect's drawings evolve into constructible 3D models that develop into real buildings. Tekla software is at the heart of the design and construction workflow, building on the free flow of information, constructible models and collaboration. We have changed our company name to Trimble.

The new Tekla Structures 2016 offers you fresh modern look and feel, ease of use, efficient drawing production and enhanced collaboration. **The evolution of Tekla software goes on strong at the heart of Trimble Buildings' offering.**

tekla.com/evolution

 **Trimble**

 **Tekla**[®]

Contact **Cadex SA**
Tekla Structures Partner
info@CadexSA.com
www.CadexSA.com