

STEEL AWARDS 2019 WINNERS AND ENTRIES

2019 VOL 43 ISSUE 5



MAIN SPONSORS

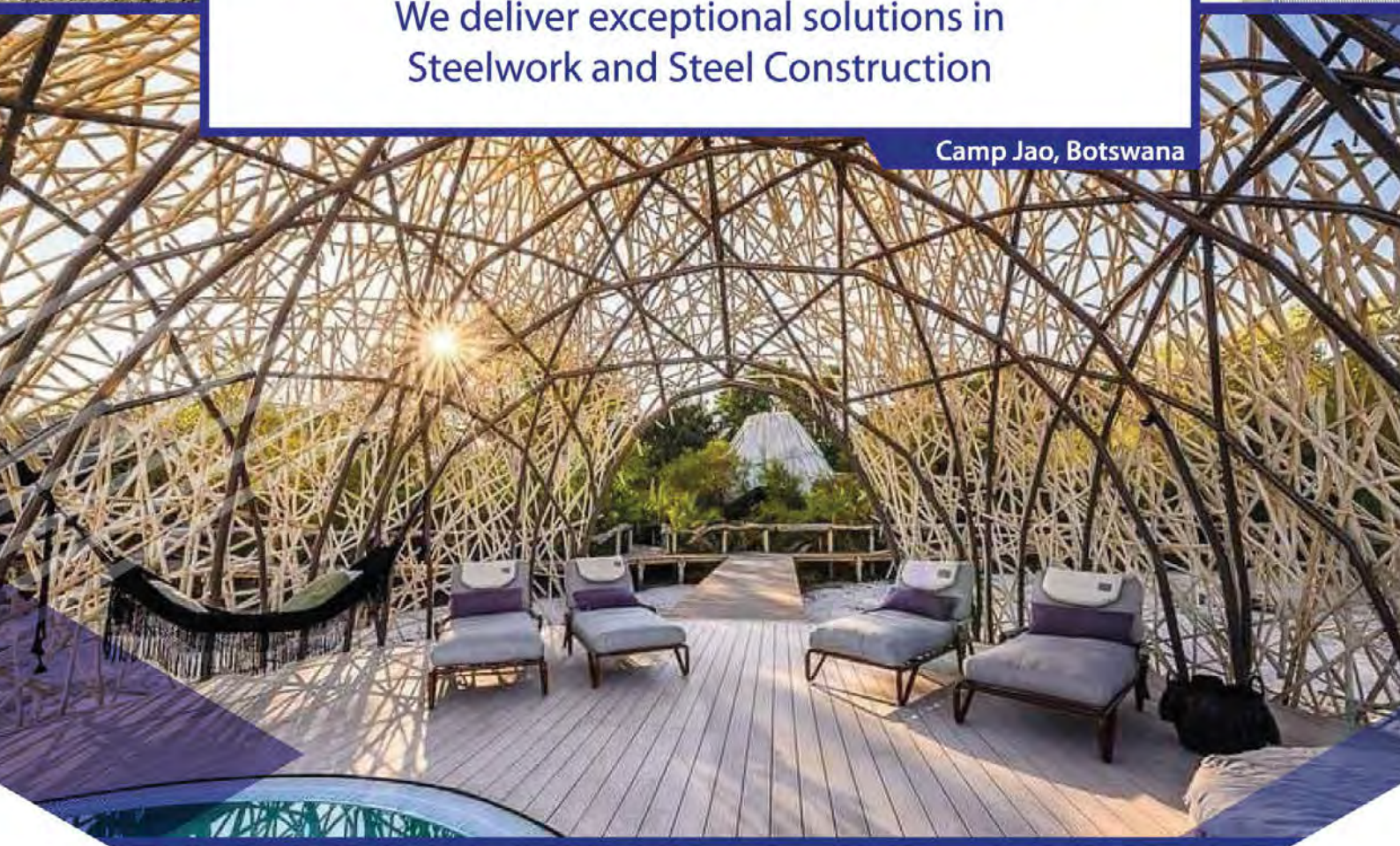




Omnia Nitrophos Plant

FORM and FUNCTION

We deliver exceptional solutions in
Steelwork and Steel Construction



Camp Jao, Botswana

Tel: (011) 953 4584/5 **Fax:** (011) 660 5855 **Email:** info@sesteel.co.za
Address: 90 York Street, Krugersdorp, 1739.
Web: www.sesteel.co.za



STEEL FABRICATION

Design • Detailing • Manufacture • Supply • Erection • Quality Control



COVER PHOTO: Durban Christian Centre
PHOTO SUBMITTED BY: NJV Consulting



OVERALL WINNER
(PAGE 10 - 13) **and**
SAFAL STEEL INNOVATION
CATEGORY WINNER
(PAGE 58)



MITEK LIGHT STEEL FRAME
BUILDING CATEGORY WINNER
& COMMENDATION
(PAGE 20 - 24)



ARCELORMITTAL SOUTH
AFRICA ARCHITECTURAL
CATEGORY WINNER
& COMMENDATION
(PAGE 26 - 30)



INDUSTRIAL CATEGORY
WINNER & COMMENDATION
(PAGE 32 - 34)



GRS METAL CLADDING
CATEGORY WINNER
(PAGE 35 - 38)



COMMERCIAL
CATEGORY WINNER
(PAGE 39 - 41)



ASTPM TUBULAR CATEGORY
WINNER & COMMENDATIONS
(PAGE 42 - 48)



SAFINTRA FACTORY &
WAREHOUSE CATEGORY
WINNER (PAGE 49 - 52)



BRIDGES CATEGORY WINNER
& COMMENDATION
(PAGE 53 - 56)

STEEL AWARDS 2019

- **MAIN SPONSORS** (PAGE 4 - 6)
- **THE JUDGES OF STEEL AWARDS 2018**
(PAGE 8 - 9)
- **DIGITAL TRAILBLAZER** (PAGE 15)
- **PHOTO COMPETITION** (PAGE 16 - 18)
- **PARTNER SPONSORS** (PAGE 59 - 61)
- **A - Z ENTRIES** (PAGE 62 - 82)

REGULARS

- **FEATURE** (PAGE 2 - 3)
- **SAISC FEATURED MEMBER AND**
MEMBER LIST (PAGE 82 - 92)

PUBLISHED BY:

Southern African Institute of Steel Construction
62 Lower Germiston Road, Haggie Office Park, Heriotdale
(011) 726 6111 | www.saisc.co.za | info@saisc.co.za

EDITOR: Denise Sherman, denise@saisc.co.za

SUB-EDITOR: Amanuel Gebremeskel, amanuel@saisc.co.za

ADVERTISING: advertising@saisc.co.za

LAYOUT: Sandra Addinall,
+27 (0)11 868 3408 | +27 (0)83 601 7209

REPRO AND PRINT: TYPO Colour Printing Specialists cc

SAISC MANAGEMENT TEAM:

CEO: Paolo Trinchero, paolo@saisc.co.za

Technical Director: Amanuel Gebremeskel,
amanuel@saisc.co.za

SASFA: John Barnard, john.barnard@saol.com

SAMCRA: Dennis White, dennis@saisc.co.za

STEASA: Keitumetse Moumakoe, keitumetse@steasa.com

THE SOUTHERN AFRICAN INSTITUTE OF STEEL CONSTRUCTION

Website: www.saisc.co.za

Instagram: [@saisc_steel](https://www.instagram.com/saisc_steel)
[@steelawards](https://www.instagram.com/steelawards)

YouTube: <http://bit.ly/SAISCYoutube>

LinkedIn: <http://bit.ly/SAISCLinkedIn>

Facebook: <http://bit.ly/SAISCFacebook>

Twitter: [@saisc_steel](https://twitter.com/saisc_steel)



SAISC FEATURE

DENISE SHERMAN
MARKETING MANAGER, SAISC

SEE YOURSELF IN STEEL

The 2019 entries for the SA Institute of Steel Construction (SAISC) Steel Awards contained an unprecedented level of diversity. This ranges from building type, size, ownership and construction/property value, from cost-effective to high-end. There has also been enormous diversity reflected in both the aesthetic and functional

use of steel in construction – from light steel frame building, to metal roofing and cladding through to the use of tubular and heavy structural steel.

The level of diversity this year is also reflected ‘behind-the-scenes’: in terms of age, gender, professional discipline and background of the many and

varied role-players – such as the project teams, judging team, voice-over artists, SAISC and sub-divisional team members as well as event sponsors from all sectors of the South African steel supply chain.

“We are very pleased with the rich and multi-layered diversity we are seeing



in the Steel Awards 2019. It reflects the nature of the country we live in, and the fact that people are using steel for a range of purposes to suit their needs,” explains SAISC CEO Paolo Trinchero.

In order to position industry for the future of steel, the SAISC is therefore aiming through events such as the annual Steel Awards to build community and resonate with a wider audience including a broad representation of generational and ethnic groups. Recently, in line with this objective, the Institute adopted the marketing tagline ‘See Yourself in Steel’ to promote cultural and corporate transformation and to foster a strong, future fit South African steel community.

“The reality of South Africa today, is one of diversity in all walks of life. The SAISC therefore encourages a safe, positive nurturing steel industry where differences are not just tolerated but are valued,” asserts Trinchero.

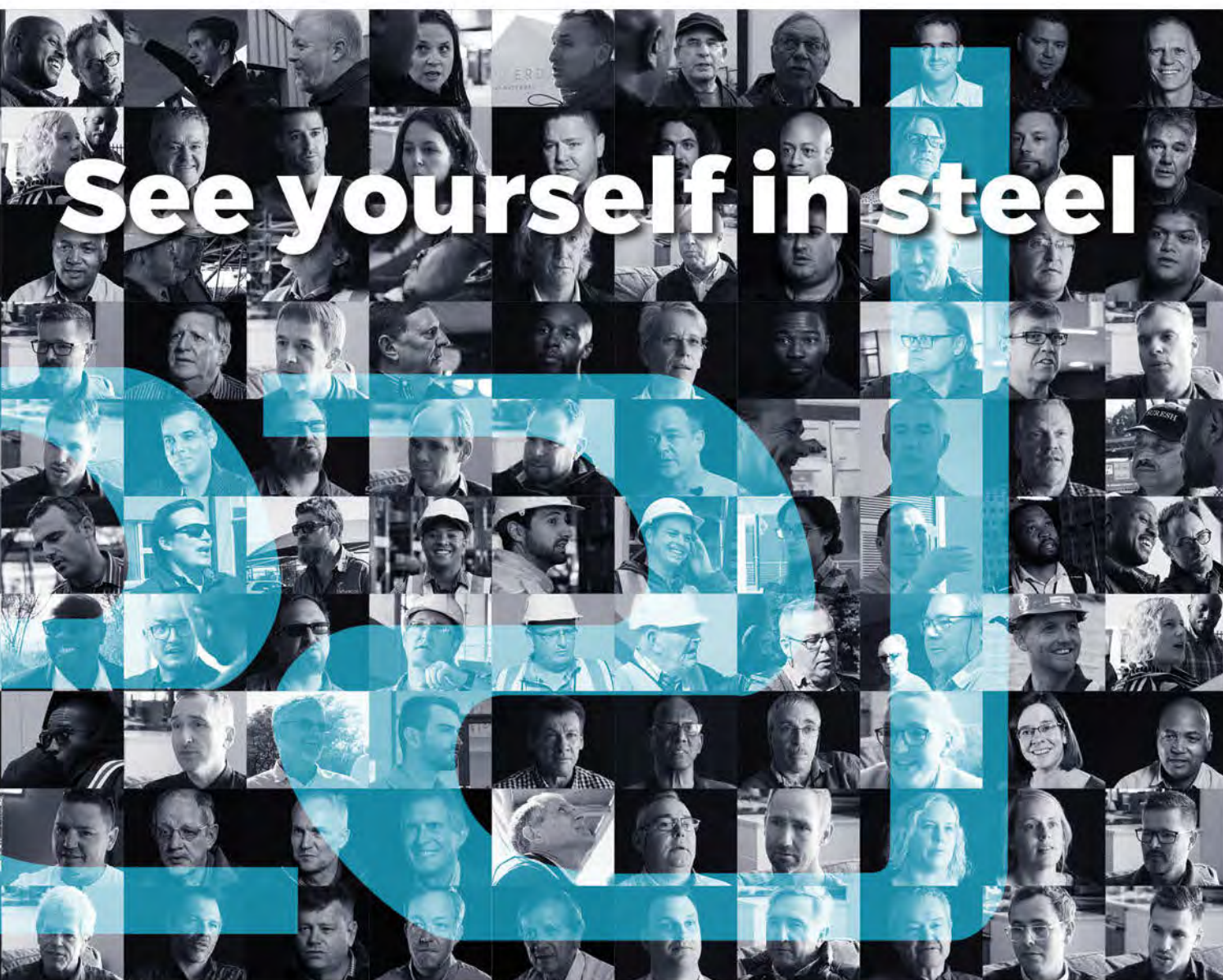
Steel Awards 2019 brings a glimpse into the story of South African steel. A story of projects completed with pride. A story of excellence. A story of structures that will stand the test of time. Structures made possible by the tireless efforts of individuals with vision, working together to make great things possible.

We are big picture thinkers. Tenacious people, committed to seeing South African Steel succeed.

We are Steel Producers, Merchants, Fabricators and Contractors. We are Developers, Architects, Engineers and Detailers. We are Workers, Riggers, Boilermakers and Foremen. We are young and old. We are men and women.

Steel Awards is about celebrating what committed individuals can achieve when they contribute their time, and strengths. Whether you’re in the boardroom, the office, on the shop floor or on site, there are no small roles. Every individual’s contribution makes the success of the industry as a whole possible.

SEE THE PART YOU PLAY.
SEE YOURSELF IN STEEL.





We are a human centered, client-focused enterprise, dedicated to consistently delivering top quality steel at competitive prices.

We will invest in the lives of our people, the communities we live in and the sustainability of our environment.

WE WILL FORGE A STEEL ICON THROUGH ENDURING PARTNERSHIPS

BSi Steel was founded in May 1985 and has established itself as a major force in steel distribution throughout Southern Africa. We are a highly competitive company; we play hard and we play to win, but not at all costs. We value our integrity and reputation above all things, it is upon these foundations we continue to grow a business that will stand the test of time.

Over the last 10 years we have steadily grown our market share in the structural steel sector. We have increased our capacity on lipped channel production last year, including the ability to punch-in-line. We are in

the process of increasing our range of structural sections in an effort to offer the widest possible range to our valued clients.

The current economic situation has placed the steel industry under tremendous duress. Focus has generally shifted from making a decent return to survival. In such times, I think it is very important for all of us to work together to see out the storm. Minister Patel has recognised our industry is in trouble, a special Steel Committee was formed in August by the minister, with representatives from SAISI, SAISC, SEIFSA, AMSA, ISF, Solidarity and NUMSA – we are hoping

his influence through the DTi, ITAC will assist us going forward.

We are seeing an alarming increase in the imports of Chinese finished steel products and prefabricated steel, which is putting the manufacturing and construction sectors under increasing pressure. We are going to have to work hard and smart to protect our markets. BSi is making a big effort to assist our clients in competing against China, both in SA and into overland African markets.

We are proud to be sponsoring this event & would like to thank SAISC for all the hard work they put into the construction sector.



TRUSTED • RELIABLE • COMPETITIVE



STEEL

Forging Partnerships

MAIN SPONSOR OF STEEL AWARDS 2019 – CAPE TOWN,
KWAZULU NATAL AND NATIONAL ENTERTAINMENT SPONSOR

AVENG TRIDENT STEEL



Aveng Trident Steel is proud to be associated with the Annual Steel Awards and supports the 2019 event through its main sponsorship of the Cape Town and KwaZulu Natal evenings, as well as its national sponsorship of all the entertainment in the coastal regions and Gauteng.



two state-of-the-art blanking presses, a high tensile cut-to-length processing line, a trapezoidal cut-to-length line, bright bar peelers, high-speed band saws, various croppers, blanking lines and slitters.

The service offering from this wide range of processing lines include angle cutting, blanking, cut-to-length processing, cropping, bright bar peeling, edge dressing, slitting and tool cutting, to name just a few. Services are not limited to value adding of flat products only, but Aveng Trident Steel has a division that provides a vast range of carbon, alloy and speciality spring steel products.

The vision of putting the right steel product in the right place, at the right price, at the right time is a sustaining discipline which has enabled Aveng Trident Steel to navigate today's uncertain market conditions. Aveng Trident Steel is viewed as technologically sound and strategically positioned to evolve and progress in an ever-changing global market.

To expand its product offering and to continuously re-position itself in an ever-changing environment, Aveng Trident Steel continues to invest in various capital projects as seen over the past years. Selected tube mills from its Alrode facility were moved



Aveng Trident Steel is an Aveng Group company offering value-adding services and is geographically well situated to service the main markets requiring steel service centre product offerings. The company is a proven supplier of automotive steel solutions in South Africa and supply into all the automotive hubs in the country.

Aveng Trident Steel is seen as an active member in the steel industry and is a member of the National Association of Automotive Component and Allied Manufacturers (NAACAM) and the South African Institute of Steel Construction (SAISC). The Company is BBBEE compliant with a rating of level 2.

In line with the high specification requirements of the automotive manufacturers, Aveng Trident Steel offers precision processing capabilities that includes but is not limited to:



to its Roodekop facility of which the first mill is already operational. Both Cape Town and the Coil Processing Division in Roodekop produce lip channels, with Cape Town widening their product offering to include roof sheeting by means of a high-tech roofing line, which enabled them to secure an array of large projects in the Western Cape. The Prospecton Branch in KZN recently added a new slitting line to their service offering and the Speciality Division invested in a high-speed bandsaw.

Despite current market conditions, Aveng Trident Steel demonstrates its robust resilience and commitment by contributing as a strategic partner in developing and growing the South African economy and continues to offer customers quality products, delivered on time, at competitive prices.

CONTACT DETAILS:

BRANCHES:

Roodekop
(011) 861 7111
(011) 861 7107

Rosslyn
(012) 541 2116

Durban
(031) 913 2300

Port Elizabeth
(041) 405 6200

Cape Town
(021) 907 1600

ROODEKOP DIVISIONS:

Coil Processing Division
(011) 861 7107

Export Trading
(011) 861 7107

Speciality
(011) 864 7126

Tube
(011) 861 7107

Automotive
(011) 861 7197

Projects
(011) 861 7046

CERTIFICATIONS:

- ISO TS 16949 Automotive
- ISO 14001 Environment
- ISO 18001 Health & Safety
- BBBEE Level 2

Service Centre Products & Services

- Cut-to-Length
- Slitting
- Pressed Blanks
- Guillotining
- Angle Cuts
- Bright Bar Peeling
- Cropping
- Long Products
- Blanking
- Speciality Products
- Coil Products
- Lipchannels
- Tube
- Roofsheeting
- Sheet & Plate
- Spring Steels



TESTED **TRUSTED TRIDENT**



THE JUDGES OF **STEEL AWARDS 2019**



Each year, a committed team of professionals devotes a sizeable amount of time and insight into reviewing each nominated project. The SAISC Steel Awards judging process includes both quantitative and qualitative assessment procedures, which take place over a 5 month period. The SAISC would like to express its gratitude to the Steel Awards 2019 judging panel for their commitment, and for their vital role in recognising and rewarding excellence in our industry.

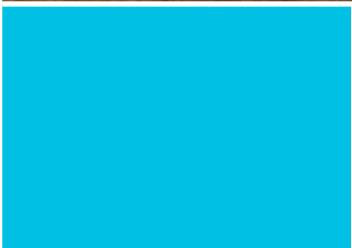


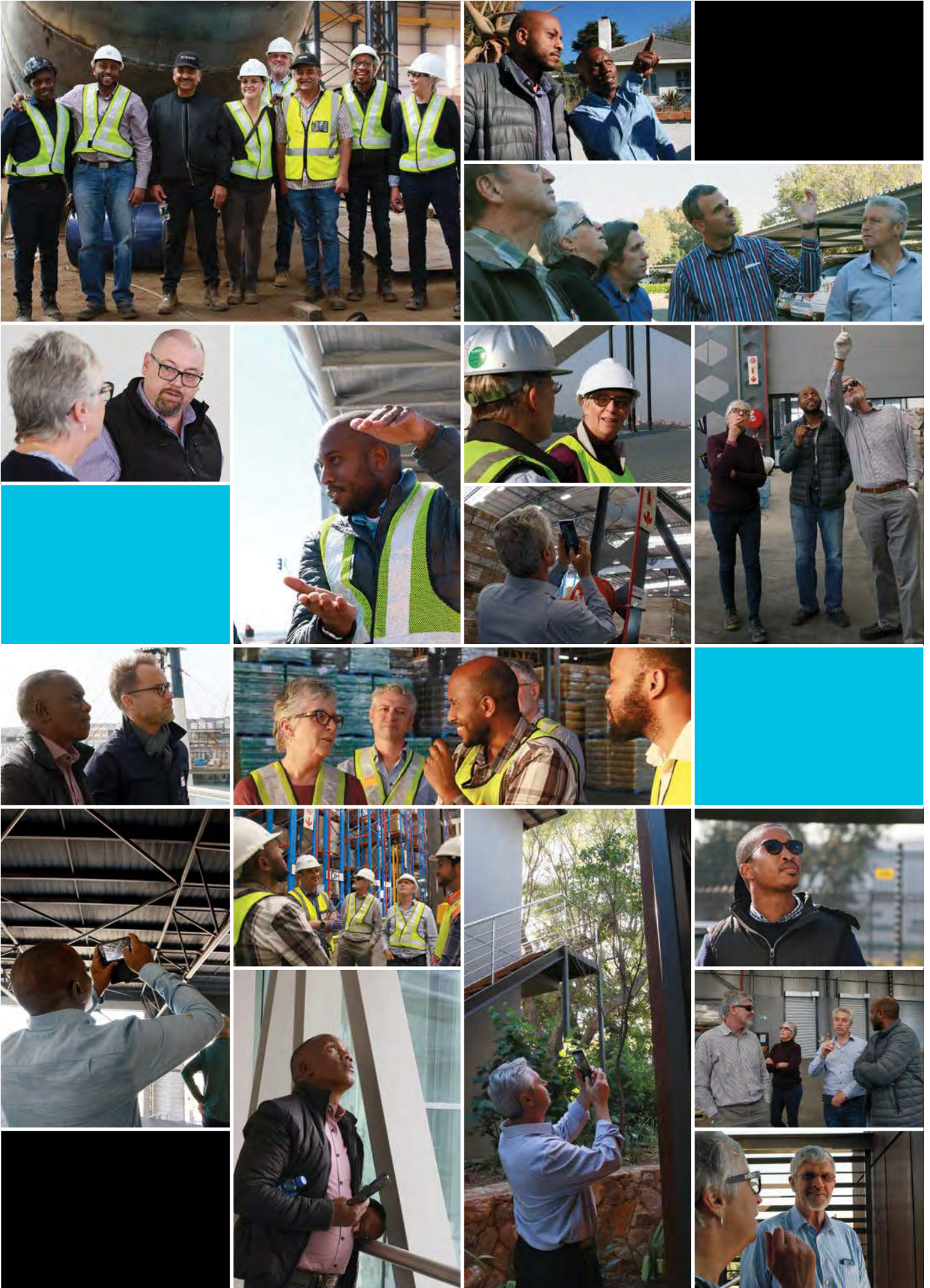
JUDGES

- Amanuel Gebremeskel** – Technical Director, SAISC
- Dennis White** – Director, SAMCRA
- Franco Mordini** from Macsteel, representing the ASTPM
- Garry Powell** from Marley Building Systems, representing SASFA
- John Barnard** – Director, SASFA
- John Duncan** from Cadex SA, representing the JSD
- Heather Salinger** – Independent Tekla Detailer
- Keitumetse Moumakoe** – Director, STEASA
- Thulani Sibande** – Director, Paragon Architects

SUPPORT STAFF

- Liesel Weber**
Judging and site visits Co-ordinator
Marketing Communications and Events Manager,
SAISC
- Denise Sherman**
Project team interviews and site visit photographs
Marketing Manager, SAISC





OVERALL WINNER

AND SAFAL STEEL INNOVATION CATEGORY WINNER

DURBAN CHRISTIAN CENTRE – NEW AUDITORIUM CAMPUS



The “Jesus Dome” roof structure at the Durban Christian Centre was a very well-known feature roof, very visible on the sweep of the N2 coming into Durban. The auditorium burnt to the ground in a devastating fire in 2016 leaving the local congregation, some 3 500 strong, without a place of worship. The rebuild was commissioned in 2017 and the team was gathered.

The concepts

The client wished to retain the memory of the original dome into the future, unfortunately, a shape which belies the modern understanding for acoustic performance. To produce a world-class auditorium the architects, EPA, threw the memory of the dome up into the air and a tri-bifurcated arch was conceived. Simple, smooth extruded box shapes rising over a sheeted, duo-pitched and acoustically attenuated free-spanning roof structure. On plan confined onto a hexagonal concrete ring beam squeezed to focus on the stage.

There seemed little purpose, other than feature, for the arches if they were not to be used to hang the roof below.

PROJECT TEAM

Nominator and Structural Engineer – NJV Consulting (Pty) Ltd | **Client / Developer** – Durban Christian Centre
Architect – Elphick Proome Architects Incorporated | **Quantity Surveyor** – Abakali
Quantity Surveyor (Lead) – RLB Pentad Quantity Surveyors | **Project Manager** – M3 Africa Consulting
Main Contractor – Steffanuti Stocks Building KZN | **Steelwork Contractor** – Impact Engineering (Pty) Ltd
Steel Erector – CMGC Projects | **Cladding Manufacturer** – Global Roofing Solutions
Cladding Contractor – Impact Engineering (Pty) Ltd | **Corrosion Protection (Galvanizing)** – Phoenix Galvanising
Corrosion Protection (Paintwork Contractor) – Top Coat | **Fabrication Detailing** – Strutech 3D Modelling
Corrosion Consultant – T.H.C.P.S. | **Bearing Supplier** – Nova Engineering Works (Pty) Ltd
Access Consultant – Façade Solutions | **Arch Cladding Sub Contractor** – Scope Of Work

So, two possible schemes were followed in parallel. One with no arches – the roof structure truss grillage made deep enough to free span, and a second with the arches used to hang the primary apex girder so economizing on the truss grillage. This gave cost comparisons to the client in respect of the spend to achieve the arches over a more conventional structure.

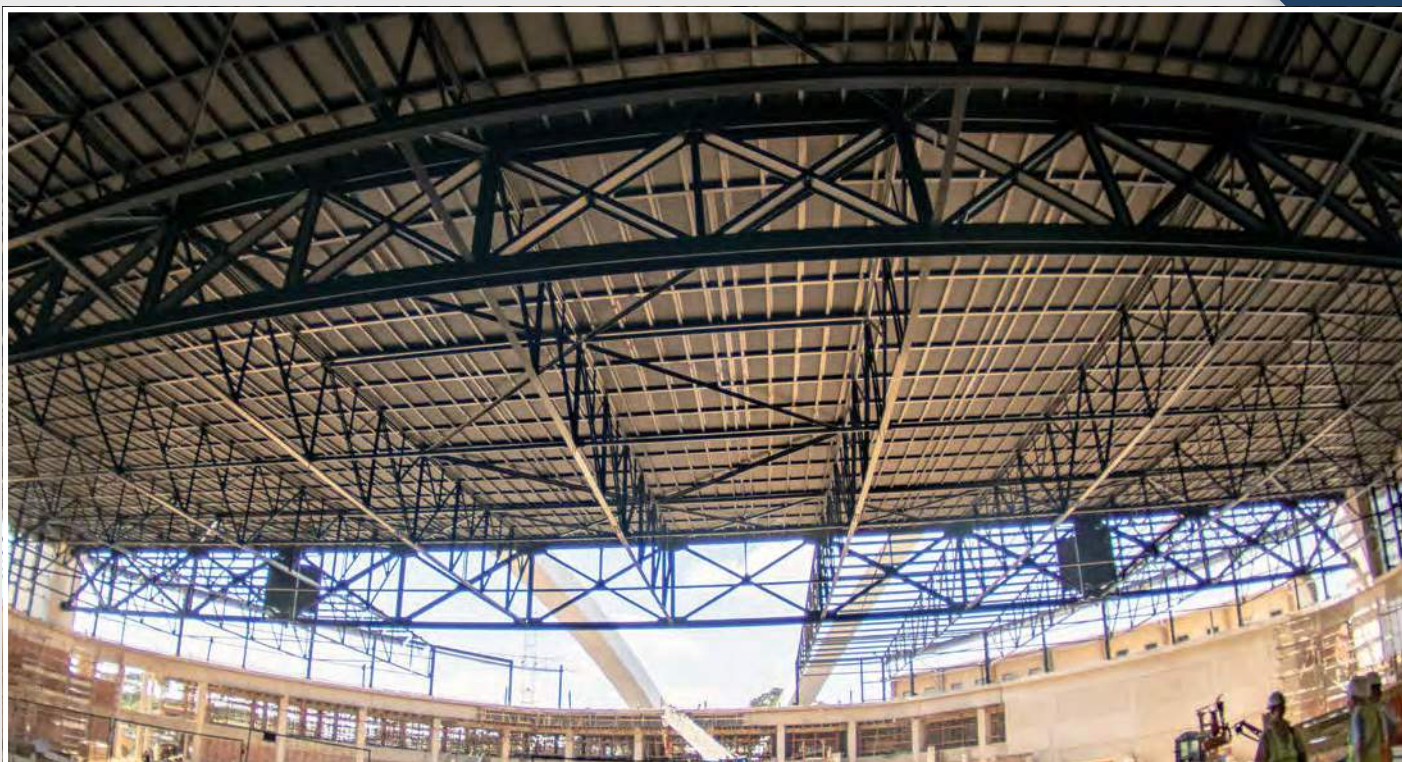
Taking it to the ground

Steel arches need pouncing points, which for this structure, were some 15m off the ground. Off shutter concrete prisms seemed to fulfill the need in every way. The primary arch buttresses needed to be slimmed to allow access on a restricted footprint so this arch was tied – the primary girder running under the primary arch forms the arch tie, interconnected in a bold move through large welded steel elbows set into the 2.5m wide reinforced concrete buttresses. The secondary arch buttresses were free to sweep to ground along the steel arch thrust lines, or thereabouts.

For the balance of the roof structure, a chunky concrete ring beam sits atop 7m high concrete columns and tied into the double story structures at front and back of house.

Making the geometry work

The arches are, as a trio, wedged from a single sphere, with the origin deep below the floor slab. Each arch is the rind of a perfect slim slice through the origin of the sphere and as such, in radial section, is very slightly trapezoidal – this variation was so small that the shape could easily be rationalized to rectangular allowing the designers and fabricators to select UC sections radiussed about the major axis. The Hulabond cladding box adopted the final trapezoidal form. Round tubes were used for the lacing in combination with web plates.





With the concept realized and agreed with the architect, the structural design team got to work developing a parametric algorithm in the visual programming environment of Dynamo, which works seamlessly with Revit. This was then used to solve the geometry of all of the arches by iterating through the parameters of the sphere, and the arch truss centerlines imported into the global OASYS analyses and REVIT models and ultimately into TEKLA.

Getting the design done

The internal truss grillage is a simple 6 x 6 grid, allowing the designers some latitude to offer up future-proofing for spot loads at the intersections, as well as providing a sensible patchwork for the arrangement of acoustic lining, services reticulation and suspended acoustic blades above the 3 500 seated auditorium array.

Simple IPE purlins set up a bottom flange shelf frame for the acoustic lining and a platform for the Klip-Tite sheeting system. A clamped bracket was devised for all the in-roof services so that post erection drilling or screwing could be prohibited globally.

A series of global analysis models were set up, augmented by a suite of simpler two-dimensional model checks. The primary software used was the OASYS GSA Building Suite program allowing the import and export of geometry into and out of both Revit and Tekla.

Global buckling considerations paid attention to the arch arrangement, and overall stability, as well as serviceability for pre-cambers, and interim construction step models incorporating temporary support towers to protect the geometry during erection.

All the arches end with exactly the same “cheese wedge”, terminating on articulating pot bearings designed to resist pull-off (when the wind blows).

Getting to the fabrication

Negotiating with a chosen fabricator, Impact Engineering was hotly debated at the outset. For such an iconic structure the selection of the right fabricator was a primary factor in the success of the project. Agreeing on fabrication methodology and understanding fabrication economies with the fabricators during the design development is a process most designers would wish for.

NJV decided from the outset to partner with a selected detailing house, Strutech 3D Modelling. The final negotiation TEKLA model became the fabrication model in a fluid process which eliminated in our estimate 4 to 6 weeks of critical path time.

Impact Engineering fabricated the arches as a whole, one in each of their fabrication sheds. Once complete they were carved up for blasting and painting. The arch crossover units

were then preassembled for fit in the sheds before transport to site.

Innovating for erection

Steffanuti Stocks were exemplary in their attention to setting out of the large HD bolt sets. Engineer Linda Ness commented that in 30 years of practicing as a structural engineer both here and abroad the use of survey and delivery of accuracy by both Steffanuti Stock and Impact Engineering was at a level of excellence she has not witnessed before.

The program necessitated that the arch pieces be pre-clad with the Hulabond panels almost entirely prior to lifting. This required coordination and care between Façade Solutions and Impact with only a small window of time after the fact to access the arches utilizing cherry pickers for snags and joint sealing.

An erection plan well considered reduced the temporary tower suite to two, one under each hanger intersection. To say that site access was tight would be an under-exaggeration. Every truss piece lift brought the site action to a halt and a gathering audience. Each piece was maneuvered into position, lifted and slipped into place – no double lifting, no cladding damaged and no site work required. After each lift pre-set survey points were checked and structural behavior deflections matched with expectations of the analytical OASYS models.

The eight tubular hangers lay green at the fabrication works until the primary girder was de-propped and then each was





site measured and purpose made to fit. Once the arches were de-propped and the roof was hanging the trusses could be completed below the arch formation and the cladding installed.

The arches will be accessed for cleaning by rope access cleat methods devised under consultation, the cleats having been installed prior to the arch cladding.

Judges comments

Amanuel Gebremeskel

"The Durban Christian Centre is a very bold project. For the engineer to realise the form the architect envisioned must have been complex. The shape of an orange is a complicated shape. The use of these large arches which are inclined in different planes, and provide support for the roof – that in itself is an innovation."

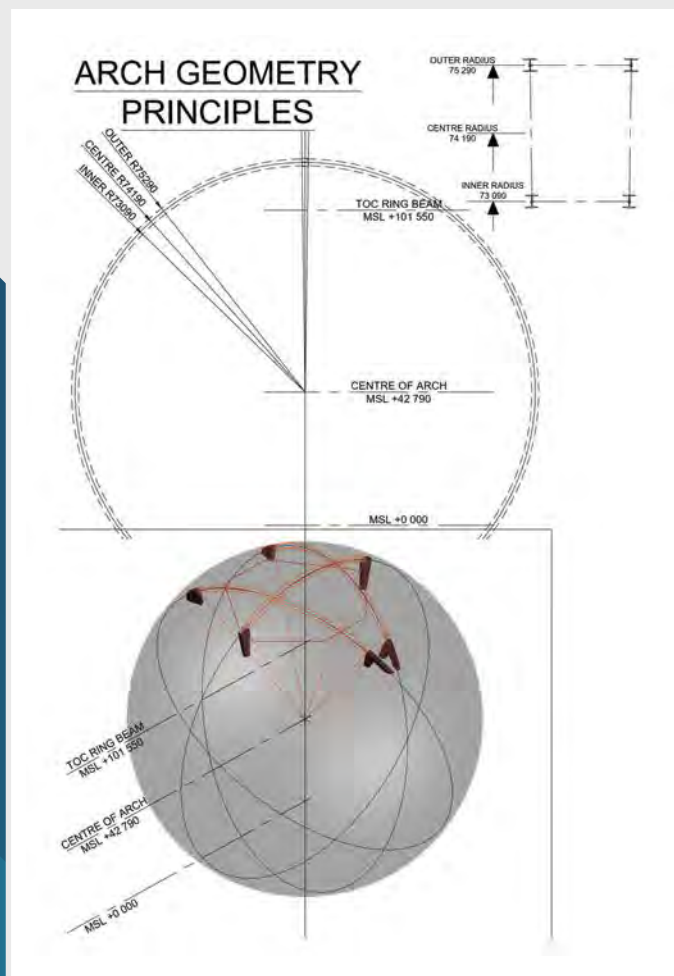
John Duncan

"The Durban Christian Centre, as a structural endeavour... magnificent! What I love about this structure is that the engineer has taken control and understood the loadings. She also understood the complexities of fabrication and erection of a rather unusual structure. The result is a magnificent effort by the whole project team."

Heather Salinger

This was an extremely difficult project, geometrically, and in terms of the brief. The team really pulled together and worked well together. Everything was well thought through, and well executed."

For more information, project team interviews and video footage, visit: <https://www.saisc.co.za/project/durban-christian-centre-new-auditorium-campus/>



STRUCTURAL STEELWORK

Completion date of steelwork: March 2019

Completion date of full project: October 2019

Tons of structural steel used: 280

Structural profiles used: Hot rolled sections, nominal tubular

CLADDING

Completion date of cladding: March 2019

Cladding profile / type used: Klip-Tite 700 0.53mm CIS

Cladding area / coverage and tonnage: 3 300m²



DIGITAL TRAILBLAZER

Macsteel raises the stakes in customer service with new B2B e-commerce platform.

Renowned for offering customers the most comprehensive range of steel products and value-added processing services in Africa, Macsteel has raised the stakes in customer service with the addition of an e-commerce B2B platform to its sales service.

A first for the steel sector, Macsteel has launched an e-commerce B2B platform to sell steel online, giving customers access to a sales and enquiry environment all day every day throughout the year.

“Business is no longer constrained to the hours between 8am and 5pm, and we found that many of our customers handle their administration and place their orders after hours. In order to enable an effective online ordering system, we added a constant enquiry option to facilitate a seamless process,” says Candice Menoita, Senior Marketing Manager at Macsteel.

She adds that customers have always been central to Macsteel’s operations and this initiative improves customer service by enabling customers to place orders and interact with sales staff at their convenience, with no downtime, for optimal time prioritisation.

“The growth of online purchasing is equally relevant across the traditional retail sectors as it is within the B2B space, and this responds directly to customers’ needs for 24/7 access to sales,” she says.

On-line sales is now a reality, and Macsteel’s extensive product range can now be ordered any time of the day.

The service is live across Macsteel Trading Cape Town, Trading Durban and Trading Germiston South as well as Trading Pipes, Fittings and Flanges and will shortly be live at Trading Nelspruit, Trading Bloemfontein, Trading Welkom, Fluid Control Cape Town, Fluid Control Durban and Fluid Control Boksburg.

Contact: Candice Menoita Telephone: +27 11 871-0123 Email: candice.menoita@macsteel.co.za Website: www.macsteel.co.za

MACSTEEL

NOW SELLING STEEL ONLINE



Visit our website for further ecommerce updates or enquire from your Macsteel Sales Representative how to purchase your steel requirements online.
www.macsteel.co.za





PHOTO COMPETITION

Cadex Systems SA supplies and fully support Tekla Structures, the leading 3D Building Information Modelling tool for structures. Our ambition is to multiply users' potential to think and achieve big. We want to improve our customers' businesses.

We put models at the core of construction processes. Tekla Structures is the innovative 3D BIM solution that facilitates accurate design, detailing and management of intelligent structural and building models of any size or complexity with ease and precision. The tools cover all materials and the entire structural design process. Tekla's intelligent models integrate the entire structural project workflow from sales and the initial bid, through detailing, fabrication and erection, to asset management.

It is the most advanced and integrated way to manage the shop-detailing, fabrication and erection of all steel structures. Tekla Structures is a model based system that reduces errors, increases productivity, and provides the highest levels of automation of fabrication and project management by interfacing with the MIS and CNC machinery.

Tekla Structures BIM software provides an accurate, detailed and data rich 3D environment that can be shared by structural engineers, architects, concrete rebar detailers, steel detailers, project managers and clients. At every stage the detailed models enable the highest level of constructability and production control.

The Software Maintenance Agreement benefits users by providing them with the support, upgrades, and fast, efficient help when required. Local first level technical support is provided by experienced professionals with years of industry experience, who assist all levels of users. Users on maintenance get access to the Tekla User Account. This includes online help, an experienced and helpful online user community, the Tekla Warehouse and access to the latest software releases.

Cadex SA, Tekla's regional reseller, brings more than 60 years of experience in the Southern African steel construction industry to their clients.

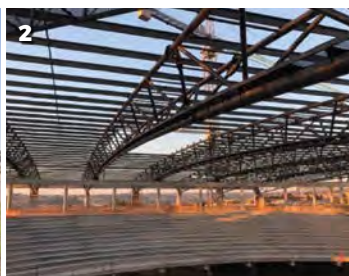
Visit www.tekla.com for details about more configurations and tools.

Contact: John Swallow or John Duncan Telephone: +27 11 463 1857/3641 Fax: +27 11 463 9445 Email: info@cadexsa.com

Web: www.cadexsa.com Postal Address: PO Box 411340, Craighall, 2024, South Africa

Physical Address: First Floor, Block D, Coachmans Crossing Office Park, 4 Brian Street, Lyme Park, 2191, Bryanston, Sandton

PHOTO COMPETITION FINALISTS



1. Chilleweni Cold Storage
2. Christian Revival Church
3. Durban Christian Centre
4. Durban Christian Centre
5. Fourways Mall Promotions Court



6. Mafube Colliery
7. Durban Christian Centre
8. N1 Pedestrian Bridge
9. Omnia Nitrophosphate Plant
10. Project Starzmann





Design, Fabricate and
Erect Steel Structures
on Time and on Budget

TEKLA SOFTWARE FOR THE STEEL INDUSTRY

Thanks to Tekla BIM software, more profitable projects are now within your reach. The office, fabrication and site teams all benefit from the detailed, constructible model. The Tekla model provides everything needed to coordinate design, optimize and automate fabrication and plan site operations for an efficient workflow preventing costly errors.

Learn more at: www.tekla.com/steel



TRULY CONSTRUCTIBLE.



Cadex SA
Tekla Structures Partner

info@CadexSA.com www.CadexSA.com

PHOTO COMPETITION WINNER AND RUNNER-UPS



WINNER: N1 PEDESTRIAN BRIDGE

[PHOTOGRAPHER: DALTON DINGLESTADT FROM TEICHMANN]



RUNNER-UP: CHILLEWENI COLD STORAGE

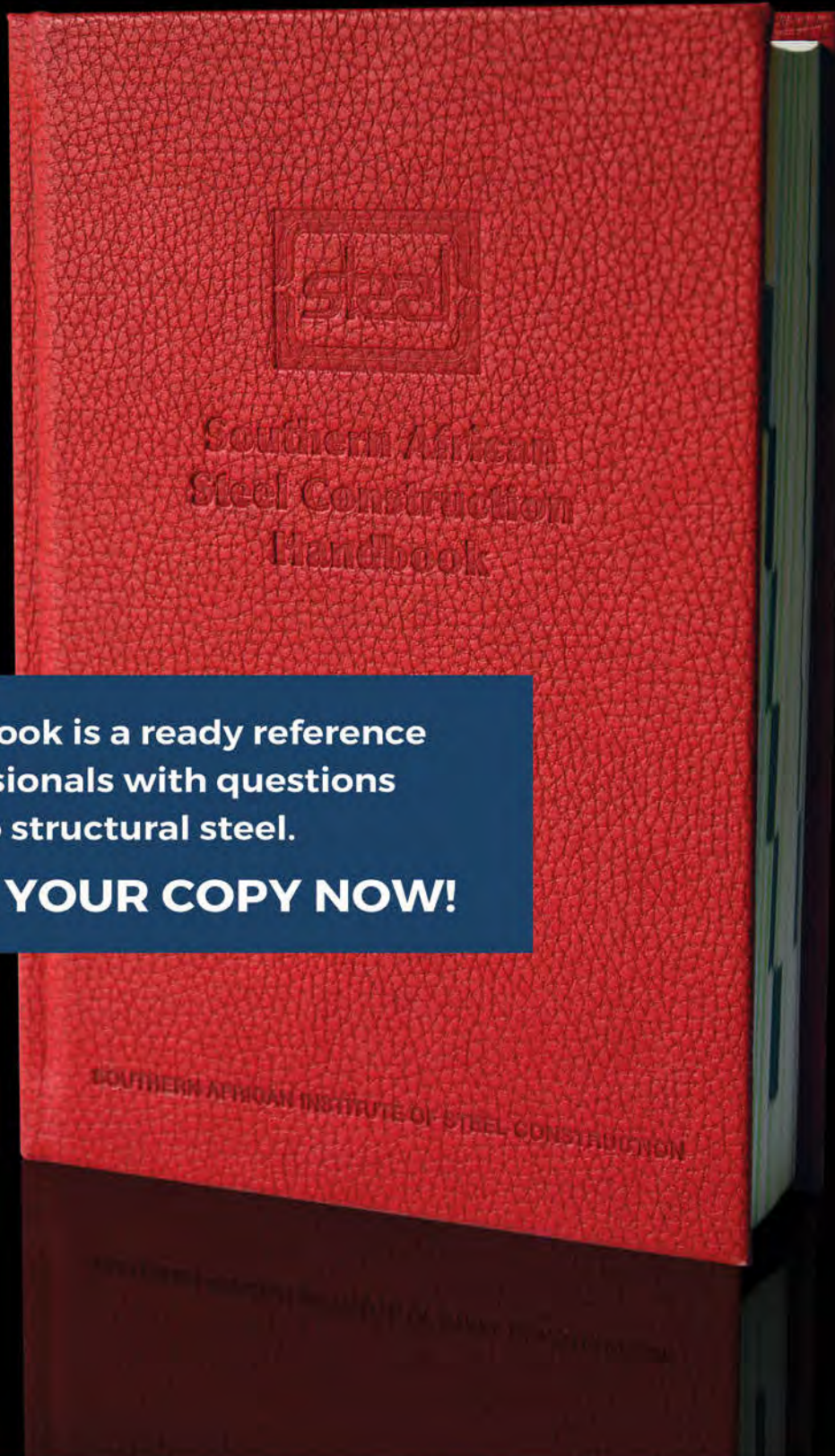
[SUBMITTED BY GLOBAL ROOFING SOLUTIONS,
PHOTOGRAPHER REINIER HARMSE FROM RX PHOTOGRAPHIX]



RUNNER-UP: DURBAN CHRISTIAN CENTRE

[SUBMITTED BY NJV CONSULTING,
PHOTOGRAPHER - LINDA NESS]

THE SOUTHERN AFRICAN STEEL CONSTRUCTION HANDBOOK



The Red Book is a ready reference for professionals with questions relating to structural steel.

ORDER YOUR COPY NOW!

Order your Red Book online at www.saisc.co.za/book-shop or contact Debbie Allcock via email – debbie@saisc.co.za

MITEK INDUSTRIES SOUTH AFRICA

LIGHT STEEL FRAME BUILDING CATEGORY



Demand for Ultra-Span continues to grow in Africa – MiTek is a diversified global supplier of builder products, collaborative software, engineering services, and manufacturing equipment to the residential, commercial, and industrial construction sectors. MiTek Industries' passion for its associates' well-being, and its customers' success, is the company's hallmark. Founded in 1955 and a Berkshire Hathaway company since 2001, MiTek has operations in more than 40 countries on six continents. MiTek is also the SAISC Steel Awards 2019 Light Steel Frame Building Category Sponsor, and has 3 entries from fabricators. MiTek licensed fabricators have won with Ultra-Span projects in 2010, 2015 and 2017.

"Together with our customers, suppliers, trade partners and associates we seek to pursue our Vision: Living and working in celebration, our vision is for MiTek to be in every structure worldwide." – HV

Entries judged in this category

- 6 Sidmouth Avenue Oranjezicht (Page 62)
- Artek 4 Architects (Page 62)
- Department of Health – Townhill Office Park (Page 67)
- Form-Scaff Distribution, Phase 2 (Page 68)
- Gamsberg Zinc Project (Page 68)
- Hope & Light School (Page 69)
- New School Diamandshoogte & Boshof Primary School (Page 74)
- Protea Glen Secondary School 2 (Page 75)
- Raincoat Office Building (Page 75)
- Razorbill Eco Construct – Shell Kroondal (Page 76)
- Rhenish Girls High Stellenbosch (Page 76)
- Shell Ultra City Kroondal (East and West) (Page 77)
- Shell Ultra Escourt North and South (Page 77)
- Sommerset West Vergelegen Mediclinic Phase 4 (Page 78)
- Tronkon Medclinic Mediforum (Page 80)
- UKZN – School of Engineering – Dining Hall (Page 80)

What we do: We serve our customers (and the industry) by helping you to continually streamline your business workflow and optimize your structural framing.

How we do it: We do that by applying our industry-leading software, off-site manufacturing equipment, innovative structural connections, expertise, and experience to help you solve problems and reduce unnecessary materials, waste, time and labour.

What sets us apart: Relationships. We live out a genuine, core passion for serving our customers; and we build trust as a partner on your journey, through our uncompromising commitment to helping you succeed – immediately, and in the long run.

Ultra-Span®

Ultra-Span is a light gauge steel roof truss system that is both lightweight and compact for easy handling and economical transportation. The low mass per m² of this roofing system ensures both savings on the supporting structure as well as on transportation and erection costs whilst also being vermin proof and non-combustible. Engineered designs are calculated using MiTek's state of the art 20/20 software and provides economical roofing solutions.

Advantages of Ultra-Span®

- Elegant simple system, with all members straight and true for a level roof.
- Span capability from small low-cost to large 40m clear span commercial structures.
- Ultra-Span trusses can be supplied in "kit-form" (low-cost housing or other remote projects).
- Longevity of product due to galvanized coating plus inherent properties of non-combustibility, resistance to borer and fungus attack.
- Lower weight reduces transportation costs & improves handling and erection.
- Ease of truss manufacture with screws and electric fixing tool directly on site or in factory conditions.
- Ultra-Span® is backed by a professional engineering and estimating department. Engineered designs are calculated using state of the art in-house developed software and provide economical roofing solutions.



Contact: Hennie Viljoen **Telephone:** +27 11 237 8700 **Email:** HViljoen@mittek.co.za **Website:** www.mii.com/southafrica

CREATING THE ADVANTAGE IN LIGHT GAUGE STEEL



**Is your roof too large to be done with pre-fabricated timber roof trusses?
Do you want to supply low cost roofs or simply prefer non-combustible roof structures?
Whatever your needs, MiTek's Ultra-Span has got you covered.**

Ultra-Span is a light gauge steel roof truss system that is both lightweight and compact for easy handling and economical transportation. Engineered designs are calculated using MiTek's state of the art, in-house developed 20/20 software and provides economical roofing solutions.

The low mass per m² of this roofing system ensures both savings on the supporting structure as well as on transportation and erection costs whilst also being vermin proof and non-combustible.

Advantages of the Ultra-Span light gauge steel truss system:

- Elegant simple system, with all members straight and true for a level roof.
- Span capability from small low-cost to large 40m clear span commercial structures.
- Ultra-Span trusses can be supplied in "kit-form" (low-cost housing or other remote projects).
- Longevity of product due to galvanized coating plus inherent properties of non-combustibility, resistance to borer and fungus attack.
- Lower weight reduces transportation costs & improves handling and erection.
- Ease of truss manufacture with screws and electric fixing tool directly on site or in factory conditions.

Midrand (Head Office) Tel: +27 (0) 11 237 8700 / MiTek Park, 754 16th Road, Randjespark, Ext. 34, Halfway House, 1685.
Cape Town Tel: 021 905 0244 • Durban Tel: 031 700 6332 • Port Elizabeth Tel: 041 360 2214
Email: marketing@mittek.co.za • Website: www.mitek.co.za

f @miteksa

t @miteksa

in MiTek Industries South Africa

yt MiTek Industries South Africa

MiTek®

CREATING THE ADVANTAGE

ULTRA-SPAN®



*MiTek Industries South Africa (Pty) Ltd, a Berkshire Hathaway Company

MITEK INDUSTRIES SOUTH AFRICA LIGHT STEEL FRAME BUILDING CATEGORY

WINNER

PROTEA GLEN SECONDARY SCHOOL 2



The Gauteng Department of Education gave out 9 Alternative Building Technology (ABT) Schools in 2018, with the aim to adjudicate the various building systems and see if there were advantages to be had using any of the systems.

Abacus Space Solutions was awarded one school, Protea Glen Secondary School No. 2; following their submission of a SANS 517:2013 based school. Local Studio Architects, who have a number of light steel frame projects to their name, including the well-accredited Hillbrow Outreach Program, were appointed as the architects.

The structure and space requirements for the GDE are laid out in their previous project designs, so the brief to the architect was to work within those parameters, but to create flow and harmonious structures conducive to learning.

Local Studio set about tailoring the generic GDE drawings to suit the site and designing a school layout and buildings that would be the best for the site. SMC Africa were tasked with the detailing and construction portion of the project. Craig Tyndall from the Structural Workshop, who is well experienced in light steel frame construction was responsible for structural engineering.

Hennie Snyman of Luleka, was appointed the Civil Engineering Consultant and was responsible for slab design, and handling of, amongst other things, the dolomitic area. The site was classified as a type 3 dolomitic area, requiring ring-beams and raft foundations.

The advantages of LSF capitalized on for this project were:

- Speed – the project started in August with the structures (3 421m²) being completed by the 15th December. This was the first of the 9 schools to achieve works completion.
- Acoustics – this is particularly important in a school and the superior acoustic properties of the walls stop sound transmission between classrooms.
- Temperature – the rooms are temperate and noticeably cool in hot ambient temperatures.
- The flexibility of design – Local Studio was able to capitalise on the flexibility of the building system to create lofted ceilings and acentric roof lines to create unique aesthetic structures.

PROJECT TEAM

Client / Developer GDE | Architect Local Studio | Structural Engineer The Structural Workshop
Engineer Luleka Consulting Engineers | Quantity Surveyor Diva Sync | Project Manager Proplan

Main Contractor Abacus Space Solutions | Steelwork Contractor Emkay | Steel Erector and Cladding Contractor SMCAfrica
Cladding Manufacturer and Supplier Marley Building Systems



A variety of ABT technologies were chosen by the client, in order to evaluate them. Abacus space solutions chose LSF due to their experience in it, and their knowledge that the product is superior to other building methods.

A brief description of the structural framing and use of LSF

The structure is a Framemaster 90mm by 38mm cold rolled section in 0.8mm galvanised steel. The roof structures are Structural Insulating Panels with Chromadek® finish. Walkways are mild steel C, and rectangular hollow sections.

The LSF system is in line with the requirements of SANS 517:2013. The inner skin is 15mm Gypsum, with a 110mm cavity batt, Tyvec, building wrap, 21mm shutterply runners and 12mm fibreboard external sheeting. The joints are treated with a two-part epoxy, with expansion joints where detailed. The external paint is Weatherguard PVA.

As there are a number of repeated building elements, or minor variations, there is a huge advantage in using LSF, as the rollformer needed to merely manufacture multiple of the same buildings, thus saving on detailing time.

The large span capacity of the 125mm SIP panels, in conjunction with LSF beams, allows for elevated internal spaces that create open light classrooms.

The inclined wing walls on the buildings would not have been as easily achieved with conventional building methods. The design choice of the inclined Chromadek® clad Structural Insulating Panel roofs provided unique Architectural features.

The experience of the Architect and LSF Contractor in using LSF, as well as the quick feedback loop allowed for accurate design and detailing work to be done relatively easily. The in-house 3d detailing done by the LSF Contractor improved communications between all of the relevant professions.

For more information, project team interviews and video footage, visit:
<https://www.saisc.co.za/project/protea-glen-secondary-school-2/>

LSFB / LIGHT STEEL FRAME BUILDING WORK

Completion date of LSFB work: November 2018

Completion date of full project: February 2019

Tons of LSF used: 40t

Span of trusses and kg/m²: 8m

Profiles used: Framemaster 90mm

Type of cladding: Fibre Board and render

MITEK INDUSTRIES SOUTH AFRICA LIGHT STEEL FRAME BUILDING CATEGORY

COMMENDATION

DEPARTMENT OF HEALTH – TOWNHILL OFFICE PARK



The KwaZulu-Natal Department of Health head offices occupied two rented buildings of which their leases expired. In line with cost-cutting imperatives, the Department of Health (DOH) decided to rather invest in a state-owned facility.

The employer's objective was to construct a new office park for the infrastructure development and technical support at Townhill Hospital, Pietermaritzburg. The expected outcome was the completion of 3 office blocks with furniture, fittings, landscaping and road works, i.e. a full turnkey project.

Structural framing

A standard FRAMECAD LSF lip channel section was used for all walls and roof structures – 90 x 40 x 0.8mm LSF Section.

Cladding

- Wall Cladding – 90% of the walls were clad externally with OSB board, Tyvek vapor barrier and Shera planks.
- Internal Cladding – Is 102mm Isover Cavity Batt insulation and 15mm Gyproc fire stop boards.
- Entrances – All were clad with Flat fibre cement boards and expressed joints.
- Roof Cladding – 100mm Factory-lite bulk insulation and SAFLOK 700 roof sheeting.

Light steel frame building elements

- The buildings comprised of 4 x Flanks and a center core section.
- Flank walls varied in height from 3m to 3.6m.
- Centre core walls varied in heights from 5m to 6.2m
- Truss spans of approximately 11.5m between walls and 900mm overhang all around.
- Approximately 45 Tons of LSF was used
- A notable achievement was the speed of construction using LSF, erected LSF, cladding, roofing, ceilings and window installation was completed in 10 – 11 months for 3 office blocks.
- 2 x 1 280m² and 1 x 900m² with a total area of ±3 500m².

For more information, project team interviews and video footage, visit: <https://www.saisc.co.za/project/7906/>

PROJECT TEAM

Nominator – Shospec (Pty) Ltd | **Client / Developer** – Department of Health | **Architect** – Sms Design Architects
Structural Engineer and Engineer – Martin & Associates | **Quantity Surveyor** – TMS
Project Manager – D-Construction / TOP JV | **Main Contractor** – TOP JV
Steelwork Contractor and Steel Erector – Shospec (Pty) Ltd | **Cladding Supplier and Contractor** – Four Seasons

Ficep is the world leader in developing and supplying automatic, intelligent steel fabrication systems.



EXCALIBUR 12

The Excalibur is the most recent development in the family of travelling column CNC drills where the part remains stationary.



GEMINI

The Gemini is the complete plate processor solution with automatic CNC drilling and thermal cutting of plates.



ENDEVOUR

CNC punching and shearing line for angle material.



PRODUCTIVITY | RELIABILITY | QUALITY

Contact: Mike Lee

Tel: 011 976 8600 • Fax: 011 394 2471

machines@retecon.co.za • www.retecon.co.za

Cape Town: 021 555 2270/1 • Port Elizabeth: 041 453 2720 • Durban: 031 701 8149



RETECON (PTY) LTD
Your Partner in Metal Working

ARCELORMITTAL SOUTH AFRICA

ARCHITECTURAL CATEGORY



Entries judged in this category

- 6 Sidmouth Avenue Oranjezicht (Page 62)
- Camp Jao (Page 64)
- Eldo Ridge Estate Residence (Page 67)
- Hazendal Wine Estate – New Educational Play Centre (Page 69)
- Hazendal Wine Estate – New Administration Center (Page 69)
- House 348 Eco (Page 70)
- House Botha (Page 70)
- House Oldfield Midlands (Page 70)
- House Shepherd (Page 70)
- Project Starzmann (Page 75)
- Sol Plaatje University Student Resource Centre (Page 78)
- The Main Straight Office Park Building, Block C (Page 79)
- The Peech Hotel (Page 79)
- The Viper Elevated Woodland Walkway (Page 79)
- UNi4 EdTech Centre (Page 80)

ARCELORMITTAL, THE WORLD'S LEADING STEEL PRODUCER

Founded in 1928 and celebrating 91 years of excellence in 2019, ArcelorMittal South Africa forms part of the world's leading steel and mining company and Africa's largest steel manufacturer. ArcelorMittal South Africa has steel manufacturing and chemical plants in Newcastle, Pretoria, Saldanha, Vanderbijlpark and Vereeniging. The company produces carbon steel in both flat and long products which is supplied into all major steel consuming industries and is used extensively in critical infrastructure projects. ArcelorMittal South Africa's target markets is Sub-Saharan Africa, with a specific focus on Southern Africa. Through the ArcelorMittal Group, the company has access to extensive global resources including technical and research facilities.

ArcelorMittal's products are branded and/or marked for your protection

We pride ourselves in our brands, trademarks and logos which stand for sustainability, quality and leadership. This is why we ensure that, where applicable, we brand/mark our products with our logos and product information. This guarantees that the products are manufactured by ArcelorMittal South Africa and are of the highest quality. It is very important to know what you are buying as the quality of the material you use is pivotal to the sustainability and quality of your projects, regardless of the size.

We are committed to sustainability

ArcelorMittal South Africa is constantly developing new technologies aimed at improving the sustainability of our products. We work in partnership with our customers and suppliers to achieve our environmental goals through innovation in steel solutions.

Visit our website for more information about our products at:
<https://southafrica.arcelormittal.com/Products.aspx>





Industrial Painting Services

NOMINATED FOR 7 STEEL AWARDS

Established in 1980, IPS has built a reputation on professionalism, quality, safety and responsiveness. Renowned by Fabricators and Main contractors for attention to detail and exceeding expectations. Level 2 BEE

Visit: www.onsitepainting.co.za

ARCELORMITTAL SOUTH AFRICA ARCHITECTURAL CATEGORY

WINNER

THE PEECH HOTEL



The Peech Hotel is a garden boutique hotel located in Melrose, Johannesburg. Meshworks was tasked with extending the hotel onto the newly acquired neighbouring property, designing an addition that respected the existing hotel and built upon its best features.

Specifically, Meshworks were asked to:

- Increase the hotel's accommodation by sixteen rooms of approx 45m² each;
- Apportion a reasonable garden space to the existing residence on the south half of the new property;
- Retain the feel of private pavilions floating in a garden;
- Consider the provision of circulation and an enlarged pool area;
- Respond to but not necessarily match the existing aesthetic.

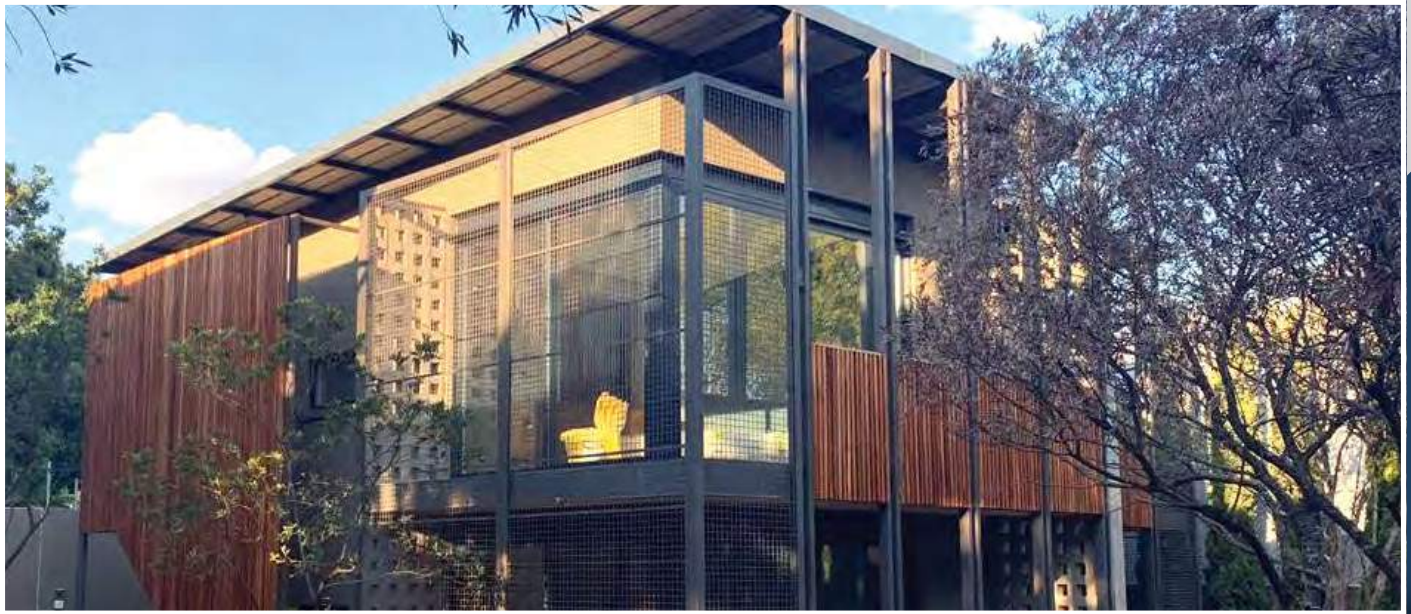
The planted steel mesh of the wrap-around balconies was an important element in the kit of parts used to craft the articulated facades of an urban village. Together with the expressed steel framework of the buildings, it creates a play of layers, materials, light and shadows. The mesh provides a contrast with the impermeability of the masonry surfaces as well as comprising a changing organic screening device. This 'wrapping' allows for an adaptability, depending on the particular siting conditions and orientation of the units. The expressive repetition of vertical steel members creates a rhythm across the site, supporting a cohesive visual language.

Beyond this expressive role, the steel cladding was essential in establishing privacy gradients, in ensuring that there was a considered relationship between the units, and in developing a language of visual connection and shielding. The steelwork allows guests to experience and control various degrees of visual permeability into and out of the units and their zones. This layering means that balconies can become private outdoor courtyards, that guests can sleep with their sliding doors open, that different thresholds reveal different spaces which open up with movement through the unit. Steel is used at all these points to express a layered architecture of lightness.

Lastly, because of its planted nature, but also because of the way it could direct and orientate each unit, the cladding became a tool in the integration of built form with landscape, expressing the passage of light and shadow, and significantly contributing to the 'garden urbanity' embodied in the project.

PROJECT TEAM

Nominator – Safintra South Africa | **Client/ Developer** – The Peech Boutique Hotel | **Architect** – Meshworks
Structural Engineer – EVH Consulting | **Quantity Surveyor** – Viking Construction | **Steelwork Contractor** – Jaru Design
Cladding Contractor – Monro Sheetting



The articulation achieved through the various steel elements in the design palette created visual and spatial diversity, restructuring the traditional uniform scripting of a hotel typology. Hotels are complex sites in which the public and the private must be constantly negotiated and the steel screening solutions allow for a filtered experience that is still spatially interesting and dynamic. The steelwork is not only rational and functional, but becomes poetic too.

For more information, project team interviews and video footage, visit:

<https://www.saisc.co.za/project/peech-hotel/>



ArcelorMittal

ThinkSteel

We are committed to sustainability

ArcelorMittal South Africa, the country's largest steel manufacturing company is constantly developing new technologies aimed at improving the sustainability of our products. We work in partnership with our customers and suppliers to achieve our environmental goals through innovation in steel solutions.

Scan here
to visit the
ArcelorMittal
South Africa
website



transforming tomorrow

www.arcelormittal.com/southafrica

ARCELORMITTAL SOUTH AFRICA ARCHITECTURAL CATEGORY COMMENDATION

THE VIPER ELEVATED WOODLAND WALKWAY



The entire Viper Elevated Walkway and supporting columns were fabricated by a Cape Town steel fabricator before being shipped to the UK, achieving a considerable saving for the client. A UK steel contractor fabricated the tripods supporting the columns and did the onsite erection of all the steelwork. The close collaboration achieved between the consultants and contractors in Cape Town and those in the UK was one of the highlights of the project.

Since disturbance of the tree roots was to be kept to a minimum, conventional concrete bases were not an option and the structure is thus supported on steel piles driven into the ground, with positions carefully chosen so as to miss all roots.

Each column is fixed onto a tripod, with its three ends each supported on a pile. After installation the pile top positions were accurately surveyed again, and the tripods all manufacture to exact, bespoke dimensions, so that each column base would be in precisely the correct position and at the correct level, ready for the column to be fixed onto it.

Superstructure structural concept

Since no diagonal members are allowed in the UK above deck level (to prevent climbing over the handrail), the handrails could not be used as the upper chord of a truss, as the team had done on previous structures. The main structural members are thus all below the deck level, comprising a central box section plus two side box sections, with the stanchion ribs above not forming part of the main structure and thus designed as delicately as possible, only 15mm wide at the top. All the box sections are welded up from plates profile cut to the correct curves.

For more information and project team video interviews visit: <https://www.saisc.co.za/project/the-viper/>

PROJECT TEAM

Nominator and Structural Engineer – Henry Fagan & Partners | **Client / Developer** – Emily Estate (UK) Ltd
Architect – Mark Thomas Architects | **Quantity Surveyor RSA** – Bernard James & Partners
Quantity Surveyor UK – Synergy | **Project Manager** – Stonewood Design Architects | **Main Contractor** – Beard
Steelwork Contractor RSA – Prokon Services | **Steelwork Contractor and Steel Erector UK** – MJ Patch & Co
Timber Work Contractor – HG Holliday (Pty) Ltd | **Corrosion Protection Consultant** – KVB Associates
Corrosion Protection (galvanizing) – Advanced Galvanising | **Corrosion Protection (paintwork contractor)** – MRH
Photographer (competition) – fotohaus | **Photographer (other images)** – Henry Fagan & Partners

SAISC STEEL AWARDS INDUSTRIAL CATEGORY



The SAISC Steel Awards Industrial Category showcases the role of steel as the backbone of our economy. The reliability, strength and longevity of steel facilitates industrial buildings that are robust, efficient and cost-effective.



Entries judged in this category

- Gamsberg Zinc Project (Page 68)
- Kusile Coal Bridge from Kusile Boiler 5 to Kusile Boiler 6 (Page 72)
- Mafube Colliery Nooitgedacht Mine, Middelburg (Page 72)
- Omnia Nitrophosphate Plant (Page 74)
- Project Sishen Modular Plant Expansion Project (Page 75)
- SA Steel Mills (Page 77)
- Wisium SA (Pty) Ltd – Relocation and Extension of Mixing Plant in Brits Industrial (Page 82)



INDUSTRIAL CATEGORY

WINNER**OMNIA
NITROPHOSPHATE
PLANT**

Omnia is a diversified chemicals group that supplies chemicals and specialised services and solutions for the agriculture, mining, and chemical application industries. Differentiation is ensured through using innovation combined with intellectual capital, whereby Omnia adds value for customers at every stage of the supply and service chain. With its vision of leaving a “better world” the group’s solutions promote the responsible use of chemicals for health, safety and a lower environmental impact, with an increasing shift towards cleaner technologies.

A new quality control system was implemented internally at SE Steel Fabrication. All fabrication had to be done with a high level of accuracy. This was essential to prevent steelwork arriving on site and possibly requiring additional remedial work before installation, so a best-fit approach was adopted. Any remedial work may have placed the integrity of the anti-corrosive paintwork at risk in an already corrosive environment.

Limited space was available for steelwork, so a laydown area for was created approximately one kilometer from the actual site. This being the situation, the steelwork contractor placed a 20-tonne crane and a horse and trailer permanently on site while the project was running, to ensure the correct sections and steelwork were being fed to the site. Ultimately to prevent delays, there was a need to plan for tomorrow's erection, today, to avoid unnecessary standing time. Executing advanced planning on site allowed the team to remain on program.

Full penetration welded, purpose made columns, were used on the Main Plant. 3CR12 was selected for the purlins and girts. The paint specification was a complex sand blasted, epoxy corrosion specification, to ensure the longevity of the steelwork on site.

Numerous safety challenges were faced during the tight deadline to complete erection on this 1 200 tonne project. A dedicated safety officer was permanently placed on site to

PROJECT TEAM

Nominator, Steelwork Contractor and Steel Erector – SE Steel Fabrication (Pty) Ltd

Client / Developer and Main Contractor – Omnia Fertilizer, a division of Omnia Group (Pty) Ltd

Structural Engineer and Engineer – Omnia Group (Pty) Ltd – Group Technical Projects

Project Managers – Omnia Group (Pty) Ltd – Group Technical Projects and SE Steel Fabrication (Pty) Ltd

Main Contractor – Omnia Fertilizer, a division of Omnia Group (Pty) Ltd | **Cladding Supplier and Contractor** – M.R.G

Corrosion Protection (paintwork contractors) – Dram Trading and Rand Sandblasting Projects

Steel Detailer / Nomination Document – KRU Detailing cc

Piping Contractor – Goss & Balfe | **Photographer (photo competition)** – Photography by Micaela

Photographer (other submitted images) and Videographer – Cedric Brender-A-Brandis



ensure all safety compliance was met on the contractors part. This proved effective with a less than 1% accident rate during the entire span of the project, including all trades. This number needs to be taken into consideration, knowing, that there were numerous trades working on multiple levels of the structure, at the same time, the whole time. Up until the full height of $\pm 46\text{m}$.

Tight spaces meant that cranes and cherry pickers had to be strategically placed in order to reach all necessary corners and the required heights, often while other trades were working and the various levels of the structure. This also meant that work was halted while wind conditions worsened during the erection process. In total, there were two 44m articulate boom cherry pickers, a 220-tonne, 160-tonne and a 50-tonne crane on site the full duration of the project (excluding the laydown area machinery as listed above).

Planning, erection and the project program was cast in stone with a strict deadline, regardless of the weather. There was no time to be wasted. All had to be done in one year from design to being fully operational. Installation crews and machinery from Europe were due to install their scope of work to ensure that this strict program was implemented, so we adhering to the deadline was imperative.

For more information, project team interviews and video footage, visit: <https://www.saisc.co.za/project/omnia-nitro-phosphate-plant/>

STRUCTURAL STEELWORK

Completion date of steelwork: February 2019

Completion date of full project: March 2019

Tons of structural steel used: 1 200 Tons

Structural profiles used: UB/UC Columns and Beams Truss and Girder Systems Crane and Crawl Beams Channels; Tubing; 3CR12 CFLC Purlin and Girts 3CR12 Sag Angles; 304 S/S CFLC Girts 304 S/S Sag Angles

CLADDING

Completion date of cladding: January 2019

Cladding profile / type used: 304 Stainless Steel

Cladding area / coverage and tonnage: $\pm 18\,000\text{m}^2$

INDUSTRIAL CATEGORY

COMMENDATION

GAMSBERG ZINC PROJECT



The Gamsberg Zinc Project is significant in that it will exploit one of the largest known, undeveloped zinc orebodies in the world comprising of an open pit mine and a dedicated processing plant.

ELB Engineering Services (Pty) Ltd were appointed as the EPC contractor for the engineering, procurement, construction and commissioning of the 4mtpa Zinc Concentrator, associated infrastructure and bulk infrastructure scope including a 20km overland power line and 30km overland water line and treatment facilities.

Preference was given to the use of structural steel as a structural commodity in the process plant design due to the remoteness of the site and limited construction resources available in the vicinity.

As the steelwork structures on this project covered the full spectrum the use of a very broad range of hot and cold rolled standard sections as well as made up plate girders was required.

Cladding was used extensively to the roofs of substations, conveyor gantry doghouses, roofs and walls of the filter press building, compressor house and the like.

The project gave great scope to structural designers to carry out innovative and creative work. At the dictate of a somewhat fluid project schedule, designs often had to be adapted to retrofitting or to constructability with restricted access or to speed of fabrication and erection. One particular case in point being the design, detailing and erection (often retrofitting to structures already completed) of pipe and cable racks (latticed and framed or box trussed) as these were to a great extent site-run services which crossed already completed works or vehicle access ways.

For more information, project team interviews and video footage, visit: <https://www.saisc.co.za/project/gamsberg-zinc-project/>

PROJECT TEAM

Nominator, Engineer, Project Manager, Main Contractor and Steel Erector – ELB Engineering Services
Client / Developer – Vedanta Resources | Structural Engineer – Consultauri
Quantity Surveyor – CD Venter Land Surveyors | Cladding Contractor – Abraham Hansen
Steelwork Contractor and Corrosion Protection (paintwork contractor) – Louwill Lefa (Pty) Ltd
Cladding Manufacturer – ArcelorMittal South Africa | Cladding Supplier – Global Roofing Solutions

GLOBAL ROOFING SOLUTIONS

METAL CLADDING CATEGORY



Entries judged in this category

- BAIC (Beijing Automotive Industry Holding Company, Ltd) Automotive Assembly Facility (Page 63)
- BBI Packers (Page 64)
- BID Food Nelspruit (Page 64)
- Chilleweni Cold Storage Solutions (Page 65)
- CMH Kempster Ford Dealership (Page 65)
- Cummins SA Regional Office (Page 66)
- Mega Shed (Page 73)
- Millroad Industrial Park (Page 73)
- Otto Volek (Page 74)
- RFG Product Development and Laboratory (Page 76)
- SA Fruit Terminal (Page 77)
- Shell Ultra Escourt North and South (Page 77)
- The 1054 (Page 78)
- Tibani Shopping Centre (Page 79)
- Village Square Durbanville (Page 81)

Global Roofing Solutions (GRS) is the leading South African metal roofing manufacturing company, comprising two entities, Brownbuilt and HH Robertson, both with track records that extend over six decades.

In 1977, GRS introduced the first mobile rolling mills in SA and today the company continues to lead the field in the mobile mill arena. GRS' mobile mills are the most sophisticated of their kind in Southern Africa. This was followed in 1999 by a world record when it rolled a 136m long single sheet of its Klip-Lok 406™ profile. Innovation milestones have continued: the company holds several patents, including the now generically-known 'inverted rib box' (IBR) profile, and was the first manufacturer to offer the unique embossing feature on its sheeting. 2017 saw the introduction of Africa's first dual mobile mills. These mobile mills boost two of South Africa's most trusted and awarded concealed profiles, Klip-Tite and Klip-Lok 700.

GRS' sustained success is based on its proven product range, combined with a service commitment to deliver the exceptional. Quality products, including leading brands Klip-Tite™, Klip-Lok 700™, Brownbuilt™, Zip-Tek and Nu-Rib 762, are supplied for projects ranging from low-cost housing through to multimillion rand shopping centre developments. GRS also manufactures composite steel floor decking (permanent shuttering) profiles, Bond-Dek, Bond-Lok and QC Flooring as well as metal roof tiles.

GRS' expanding footprint includes fully equipped manufacturing operations in major centres across South Africa, along with established facilities in five other African countries.

With the success over the last 5 years at the Steel Awards, Klip-Tite has proven its superior properties over similar concealed fixed profiles replicated in the industry. Winning numerous prestigious awards in all Steel Award Categories. This was made possible by the design professional teams that worked at delivering the exceptional to their client.

This positions GRS as the ideal roofing solutions partner on all major commercial building, entertainment and residential projects in Sub Saharan Africa.

Contact: Shayne Lessing **Telephone:** +27 11 898 2902 **Email:** shaynel@globalroofs.co.za **Website:** www.globalroofs.co.za

GLOBAL ROOFING SOLUTIONS METAL CLADDING CATEGORY

WINNER

THE 1054



The 1054, named after the property's erf number, firmly places itself on Main Road Walmer, as a pavilion to the street edge. Main Road has been established, as part of Nelson Mandela Bay Municipality's Spatial Development Framework Plan, as a new business precinct within the bay and is expanding rapidly.

There were two main drivers behind the design of the building.

Firstly, The 1054 needed to spark conversation about what is being developed, or not being for that matter along Main Road, and whether you love it or hate it, its intention is to initiate the discussion around what and how the potential of the road should be maximised by creating intrigue where buildings become destinations along the road. The 1054, is the first building of its kind along the 2.8km stretch of road. Already within the 12 months of the building's completion, both property owners and developers have started to consider more exciting additions, alterations and in some cases new builds that are adding value to the street.

Secondly, as always, the budget was extremely tight and a design that both made the impact as above, as well as could be cost-effective was key. The design needed to be stripped back of all the frills that we come to see on many commercial buildings and design a structure that used the buildings basic structural form to create interest. Through stripping back the building to its essential elements, time could also be saved, which for any developer is advantageous.

A single dynamic contrasting form to the street was proposed, the construction of which was like that of a warehouse. A concrete framed base structure, on which precast concrete floor slabs were laid and a supporting structural steel framed upper structure. Steel sections consisted mainly of square hollow tube and H columns with lattice trusses. The interior envelope and wall construction used lighter framed steel stud work. The building could be erected rapidly with many elements being manufactured off-site. Total construction time was 9 months.

The building design played with solid and void, not the buildings external envelope, but the contrast of the seemingly

PROJECT TEAM

Nominator – DMV Architecture | **Client / Developer** – Symbolic Investments Propriety (Pty) Ltd
Architect – DMV Architecture | **Structural Engineer** – MEB Consulting Engineers
Main Contractor – Jeremy Delport Construction | **Steelwork Contractor and Steel Erector** – Bisho Steel
Cladding Manufacturer – Safintra South Africa | **Cladding Supplier and Contractor** – Clad All

ROOFING LIKE NO OTHER



KLIP-TITE only from GRS

Klip-Tite concealed fix roof sheeting was developed through continuous in-house testing of existing products, where it was realised that failure is normally caused by the sheet unclipping from the fixing clip, during high wind uplift pressure.

Thus Klip-Tite was developed:

- With transverse stiffeners in the trough to strengthen the sheet and achieve a balanced system design and even higher wind uplift resistance.
- The deflection of the pan is reduced, thus increasing the wind uplift resistance of the sheet.
- Transverse stiffeners which are a first in the South African sheeting market.
- Klip-Tite offers improved wind uplift resistance results compared to other traditional clipping systems and are more difficult to remove
- The ultimate wind uplift resistance of Klip-Tite exceeded expectations



GRS

GLOBAL ROOFING SOLUTIONS

BrownBuilt | HH Robertson



For more information email marketing@globalroofs.co.za or visit www.globalroofs.co.za



solid exterior vs. its light and airy interior, the volume of which connects all businesses within and welcomes people up within the space. A welcoming surprise to all.

It was important for the building to be modular so that the 'structural grid' could be broken/sub-divided into smaller or larger sections based on the same repetitive GLA to accommodate different sizes of businesses that would establish within the space. Currently, the building consists of a retail component to the Ground Floor, as it was essential to attract people in as a destination and in turn promote visibility for all other tenants namely the First Floor offices. To the Ground Floor, we have a new concept restaurant, well-established furniture, and décor retailer and an up and coming hair salon. The First Floor offices consist of us as an architectural practice, structural/civil engineers, finance house, freight and a pilates studio. The selection of tenants was fundamental for them to feed off each other but also to ensure the longevity of the mix for the developer.

For more information, project team interviews and video footage, visit: <https://www.saisc.co.za/project/the-1054/>



STRUCTURAL STEELWORK

Completion date of steelwork: January 2018

Completion date of full project: April 2018

Tons of structural steel used: 1 850

Structural profiles used: I-Beams/I-Columns/Lattice Trusses/Box Sections/Lip Channels

CLADDING

Completion date of cladding: February 2018

Cladding profile / type used: Saflok 410

Cladding area / coverage and tonnage: 1 373m²



SAISC STEEL AWARDS **COMMERCIAL CATEGORY**



Time saved in construction has a positive financial impact for building owners. Steel provides a fast, cost effective solution enabling developers to create fit-for-purpose structures that generate a speedy return on their investment.



Entries judged in this category

- Auto Bavaria Waterfall Midrand (Page 63)
- CCBSA Mezzanine Office (Page 64)
- EduPlex Sport Crossfit (Page 67)
- Haasendal Gables (Page 69)
- JRL Brand Experience Centre (Page 71)
- KTM Raceworx (Page 71)
- Sky City Mall (Page 78)
- Tibani Shopping Centre (Page 79)
- Ultimate Heliport (Page 80)

COMMERCIAL CATEGORY

WINNER

KTM RACEWORX



KTM Raceworx makes use of a steel framed system with non-composite cellular beams to support the floors. Steel was a common feature throughout the structure and this aided in producing faster erection times, thus reducing costs.

Multi-story steel-framed buildings used in conjunction with cellular beams offer flexibility and adaptability for the steel structure. Steel is a common feature throughout the structure provided a faster reaction time than a concrete option.

The use of steel in multi-storey building construction is based on tangible client-related benefits including the ability to provide column free floor spans, efficient circulation space, integration of building services, and the influence of the site and local access conditions on the construction process. For city projects, speed of construction and minimum storage of materials on-site require a high level of pre-fabrication, which steel-framed systems can provide.

In many large commercial buildings, a two-stage construction process means that the tenant is responsible for the servicing and fit-out, and so the building structure has to be sufficiently flexible to cope with these differing requirements. Many smaller buildings are designed for natural ventilation and with a high proportion of renewable energy technologies built into them. Many solutions are possible using steel construction.

The commercial sector demands buildings that are rapid to construct, of high quality, flexible and adaptable in application, and energy efficient in use.

Speed of construction

All steel construction uses pre-fabricated components that are rapidly installed on site. Short construction periods leads to savings in site preliminaries, earlier return on investment and reduced interest charges. Time related savings can easily amount to 3 to 5% of the overall project value, reducing the client's requirements for working capital and improving cash flow. In many inner city projects, it is important to reduce disruption to nearby buildings and roads. Steel construction

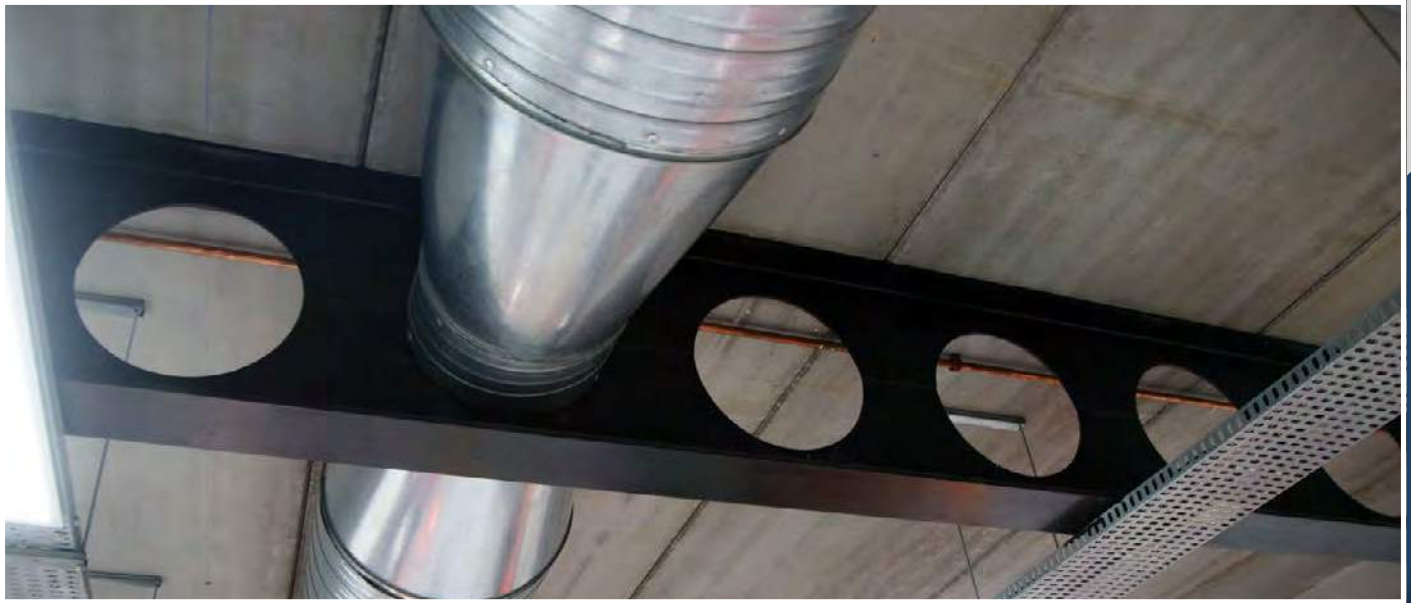
PROJECT TEAM

Nominator – Macsteel | **Client / Developer** – Multiplant | **Structural Engineer** – JandC Structural and Civil Design

Main Contractor – JandC Structural and Civil Design | **Steelwork Contractor** – Riggers & Erectors

Steel Erector – Riggers & Erectors | **Cladding Manufacturer** – ArcelorMittal South Africa

Cladding Profiler, Supplier and Cladding Contractor – Clotan Building Systems



dramatically reduces the impact of the construction operation on the locality.

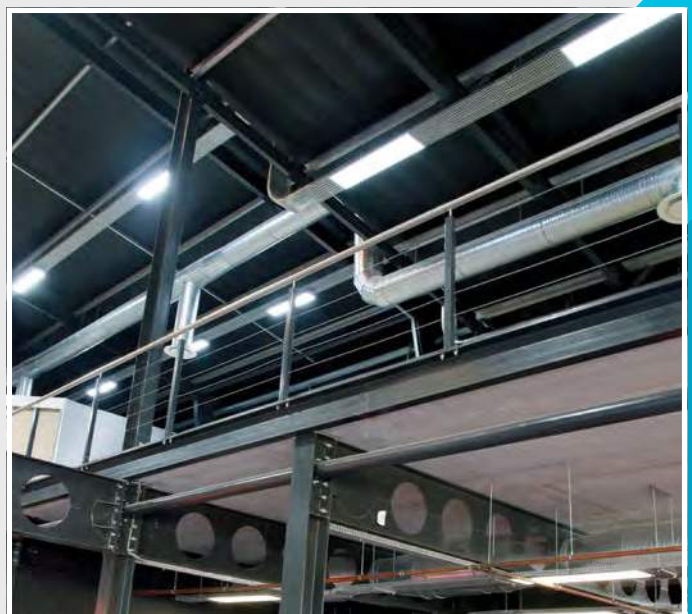
Flexibility and adaptability

Long spans allow the space to be arranged to suit open plan offices, different layouts of cellular offices and variations in office layout throughout the height of the building. Where integrated beam construction is used, the flat soffit gives complete flexibility of layout allowing all internal walls to be relocated, leading to fully adaptable buildings.

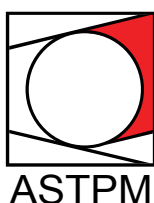
Sustainability

Many of the intrinsic properties of steel usage in construction have significant environmental benefits. For example, the steel structure is 100% recyclable, repeatedly and without any degradation. The speed of construction and reduced disruption of the site gives local environmental benefits and the flexibility and adaptability of steel structures maximise the economic life of the building as it can accommodate radical changes in use.

For more on this project, visit: <https://www.saisc.co.za/project/ktm-raceworx/>



ASTPM TUBULAR CATEGORY



THE ASSOCIATION OF STEEL TUBE AND PIPE MANUFACTURERS OF SOUTH AFRICA

The Association of Steel Tube and Pipe Manufacturers of South Africa (ASTPM) was formed in 1983 to represent the welded carbon steel tube and pipe producers. The members account for over 70% of the installed capacity. Details, product range and all other relevant information are available on our website, www.astpm.com

During the 32 years existence of the Association, the members have loyally supported the local market and have also exported in excess of 1.5 million tons of tube and pipe to over 50 countries. This has only been achieved due to the top quality product that these members produce which is in compliance with both local and international specifications.

The Association continues to promote the use of tube and is active in ensuring that local standards are maintained and where necessary, improved, to meet local and international requirements.

The introduction of the standard Grade S355 Structural Tubing (launched in 2010) now provides a lighter and stronger steel solution to the structural steel industry and compliments the inherent benefit of tubular steel. Its success is proven by ever growing sales in S355 tube.

Our members continue to invest in this industry and are expanding in value added machinery that includes plasma and laser cutting technology. These products are now more user-friendly especially with the connections that save time and labour costs for the fabricators and erectors, enabling them to pass the savings on to their customers.

The ASTPM is pleased to be able to continue their sponsorship of this worthy award, both now and into the future, and wishes the SAISC every success for this flagship event.

Entries judged in this category

- Camp Jao (Page 64)
- Christian Revival Church (Page 65)
- Comair Simulator 3 Building (Page 65)
- Fezile Dabi Stadium, Parys (Page 68)
- Fourways Mall Promotions Court (Page 68)
- IRPTN Pedestrian Bridges (Page 71)
- New Pedestrian Bridge at Erasmusrand on National Route 1 (Page 73)

Telephone: +27 11 726 6111 Email: astpm@astpm.co.za Website: www.astpm.com / www.steasa.com



FOURWAYS PROMO COURT ATRIUM ROOF

EXCEEDING ALL EXPECTATIONS



N1 ERASMUSRAND PEDESTRIAN BRIDGE



PARYS STADIUM ROOF

CELEBRATING OVER 30 YEARS OF EXCELLENCE



STRIVING FOR EXCELLENCE AND PEACE OF MIND IN STEEL CONSTRUCTION
1987 – 2019



ASTPM TUBULAR CATEGORY WINNER

FOURWAYS MALL PROMOTIONS COURT



As part of the upgrade of the Fourways Mall, a new roof was proposed. The roof is essentially a tubular structure.

Fabrication was challenging due to the fact that the structure contains a lot of rolled sections. A number of unique profiles had to be cut, which meant a significant amount of welding. The fabrication process required several fabrication jigs to be made up to accommodate the roof design for the project.

The roof structure is free standing, so during the erection process the project team had to build up a temporary platform to support the steel. Once everything was in position, the temporary platform was then released.

The roof was built on ground level and erected on temporary roof support steelwork. tubular sections were rolled into various radii and the cross bracing was individually profiled cut to allow a stub-on connection to the main truss struts. The challenges faced during erection involved fitting a new roof onto the temporary structure and accuracy of fabrication & erection was of the essence.

In terms of the installation sequence, the team started with the inner ring which was erected on top of the temporary platform. From there, the outer ring and struts were erected. The rings then tie back to the columns which tie back to the roof.

The Mall complex is vast, so the logistics of manoeuvring pieces into the parking area in order to eventually lift them into position presented a challenge for the team. Due to the limited laydown space, as well as crane time, planning of the erection was critical and required careful coordination with the civil contractor.

"If you go into the promotional court, and you look up, you'll see the wonder of what steel can do," says engineer Paul Rebelo from CADCON.

"Its aesthetically a very pleasing roof, which allows the light to come through. If you'd tried to do this in concrete you

PROJECT TEAM

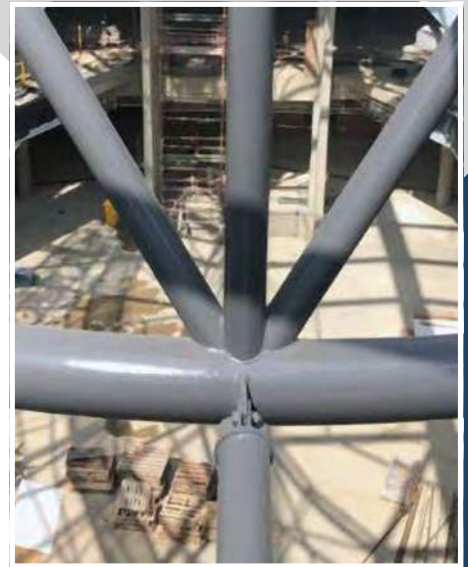
Nominator and Steelwork Contractor – CADCON (Pty) Ltd | **Client / Developer** – Azrapart (Pty) Ltd

Architect – Boogertman + Partners | **Structural Engineer and Engineer** – WSP Africa | **Quantity Surveyor** – Quanticost QS

Project Manager – SIP Project Managers | **Main Contractor** – Mota-Engil Construction South Africa | **Steel Erector** – Ijaca

Cladding Contractor – Hulabond Cladding | **Skylight Rainbow** – Skylight S.A. (Pty) Ltd

Corrosion Protection (paintwork contractor) – TDS Contractors



wouldn't have the same effect. It would have been a very heavy structure and the light would have been minimised. What you have now is a very light weight structure that's very pleasing to the eye," he concludes.

For more information, project team interviews and video footage, visit: <https://www.saisc.co.za/project/fourways-mall-promotions-court/>

Tubular steel – functional, yet aesthetically pleasing A 21st Century Solution



Members

ArcelorMittal SA | ArcelorMittal SA Seamless Tube Division | Augusta Steel | Aveng Trident Steel | Barnes Tubing Industries
LB Pipe | Hall Longmore | Honingcraft | Macsteel Tube & Pipe | New Concept Mining | Pro Roof Steel and Tube

Tel: +27 11 726 6111 Email: astpm@astpm.com Website: www.astpm.com / www.steasa.com

ASTPM TUBULAR CATEGORY COMMENDATION

CHRISTIAN REVIVAL CHURCH



The Christian Revival Church (CRC) seating accommodates 4 500 congregants and is enclosed with a curved structural steel roof consisting of triangular radiused roof trusses spaced 10m apart over an area of 80m x 68m. The seven unique structural steel triangular space frame "Toblerone" trusses are manufactured from circular hollow sections with varying spans up to 50m.

The auditorium roof structure was analysed using the Prokon frame analysis program with loading modelled in 20 different load combinations. The Toblerone trusses which span across the entire main auditorium building, are supported by reinforced concrete columns with corbels at each end of the trusses as well as by an intermediate reinforced concrete ring beam. The top chords, which under most load combinations are in compression, are braced together with horizontal circular members. The trusses are roughly 1.9m deep and 2.4m wide in plan and are curved to provide a curved roof profile and suitable slope for rainwater disposal.

The trusses have intermediate support from a ring beam which is curved in plan, forming the rear perimeter of the auditorium.

The spiral ramp is a significant architectural and structural feature in the entrance hall of the church. The ramp starts in the lower parking basement and provides safe and comfortable vertical access to all floors for all users including those in wheelchairs.

One central reinforced concrete column in the center of the spiral ramp supports a circular reinforced concrete beam and slab system at the roof. This slab and beam system is braced by perimeter columns and beams which also support the glass facade. 55mm Diameter steel hangars with adjustable couplers are hung from the slab and beam system and support the inner steel stringer channels.

The steel ring structure was added to overcome an aesthetic challenge encountered during the initial design of the concrete staircase. The design of the staircase was modified by removing the reinforced concrete columns which initially extended from the first landing to the second landing and replacing these with a circular hollow section steel ring structure.

For more information, project team interviews and video footage, visit: <https://www.saisc.co.za/project/christian-revival-church/>

PROJECT TEAM

Nominator and Steelwork Contractor Tass Engineering | **Client / Developer** Christian Revival Church
Architect DBM Architects JHB (Pty) Ltd | **Structural Engineer** Fortem Consulting Engineers (Pty) Ltd
Civil Engineer Tekciv Consulting Engineers | **Quantity Surveyor** Mellet Quantity Surveyors
Project Manager Deo Gloria Developments (Pty) Ltd | **Electrical Engineer** NALA Consulting Engineers(Pty) Ltd
Mechanical Engineer PV3 Engineers | **Main Contractor** Mike Buyskes Construction (Pty) Ltd

TASS ENGINEERING

(PTY) LTD

**TASS ENGINEERING has been actively involved in
Structural and Architectural Steel Fabrication and Erection for
50 YEARS**



**From small beginnings in 1968
Tass Engineering has grown to
become one of South Africa's
leading
Architectural and Structural
Steel Contractors**



**Our steel is building the nation
Our quality is building our reputation**

Tass Engineering - CRC Church - Roof Truss Project



Contact details: Tel +27 (11) 975 0647 • Fax +27 (11) 970 1694 • E-mail tasseng@mweb.co.za.

www.tassengineering.com

ASTPM TUBULAR CATEGORY COMMENDATION

CAMP JAO



Lead architects, Silvio Rech and Lesley Carstens, who designed the original Camp Jao in 1999, were presented with the opportunity to conceptualise a fresh and contemporary approach when time came to upgrade the dynamic Okavango Delta lodge.

“Over the years traditionally camps have been built using local hardwood and tinkers. This was not good as the forestation is a real issue” explains architect, Sylvio Rech.

The intention with the redevelopment was to make the most of the camp environment, with buildings set to blend into the tree canopy whilst offering unparalleled views and honouring the client’s commitment to be as eco-sensitive as possible.

“We viewed it as a unique opportunity, going up to the Delta, particularly with the team that was involved – the detailers, the engineer, the architect and the client... we couldn’t say no” said John Essey, CEO of SE Steel Fabrication.

“The structural framing is essentially circular hollow sections, to resemble the trees,” explains engineer, Philip Badenhorst. “The connections were kept as plain as possible so that they wouldn’t stand out.”

Badenhorst further explains that analysing the member forces and building up the 3d model was a challenge, due to the organic, asymmetrical nature of the design. “The biggest limitation was the sway from the taller structures during wind forces” he asserts.

Steel enabled the realisation of a maintenance-free structure that was manufactured off site and assembled on the client’s pristine site in an environmentally sensitive manner.

For more information on this project, including project team interviews, visit: <https://www.saisc.co.za/project/camp-jao/>

PROJECT TEAM

Nominator – SE Steel Fabrication (Pty) Ltd | **Client / Developer** – Ngamiland Adventure Safaris (Pty) Ltd
Architect – Silvio Rech + Lesley Carstens Architecture and Interior Architecture | **Structural Engineer and Engineer** – PLB Engineers
Quantity Surveyor – Q24U | **Project Manager** – SE Steel Fabrication / QS4U | **Main Contractor** – Lodge Builders Botswana
Steelwork Contractor and Steel Erector – SE Steel Fabrication (Pty) Ltd | **Cladding Manufacturer** – Fibre Roofing
Structural Steel Detailer – KRU Detailing cc

SAFINTRA SOUTH AFRICA

FACTORY AND WAREHOUSE CATEGORY



The metal roofing market has seen a sharp spike in product innovations in recent years, driven in large part by design demands based on considerations of performance and sustainability. Safintra leads the Southern African market with building systems and best-of-breed solutions that provide impressive performance and design versatility.

Safintra is a market leader in metal roofing and cladding solutions, engineered to allow professionals to create structures with full design freedom whilst still achieving optimal functional performance.

Safintra is part of the Safal Group with 36 operations spanning 10 countries in Sub Saharan Africa.

Safintra's wide range of profiles provide a variety of aesthetics to match every design style.



Entries judged in this category

- Amka Products (Pty) Ltd Campus Development (Page 62)
- ARB Distribution Centre (Page 62)
- Chilleweni Cold Storage Solutions (Page 65)
- Cummins Johannesburg Relocation Program Waterfall (Page 66)
- Louwlandia Pocket 3 Warehouse (Page 72)
- LP8 Mini Warehouses Waterfall (Page 72)
- Runway Business Park (Page 76)
- WAGS Warehouse (Page 81)
- We Buy Cars Warehouse (Page 81)
- Westlake Warehouse Erf 50 (Page 81)

- The timeless Classicorr® corrugated profile is as relevant to today's residential aesthetic as it was in Victorian times.
- Tufdek® and Widedek® are the work horses of the Safintra trapezoidal profile stable. With crisp industrial lines, they offer both structural strength and value for money, performing as both roofing and side cladding.
- Fluteline® offers impressive spanning capabilities when purlin spacing's are pushed to the limit and a strong reliable profile is needed.
- The elegant Trimflute® profile provides great savings as a cladding profile with its unbeaten cover width of 1015mm's. This profile has proved itself time and time again as a roofing and cladding profile in high end residential applications where understated elegance is the order of the day.
- The Saflok 700® and Saflok 410® concealed fix systems, available exclusively from Safintra, offer industry leading performance in all wind conditions. These concealed fix roofing systems allow for the use of exceptionally long sheets in excess of 150m's, without the need for end laps. Being perforation free, they also accommodate roof pitches as low as 2 degrees. Saflok is equally at home on large industrial buildings and modern family homes.
- Safintra's Newlok® profile is a traditional standing seam profile with sharp shadow lines reminiscent of traditional standing seam profiles no longer available in the South African roofing industry. This profile is also a cost effective and visually attractive alternative to current panel cladding systems used on facades in shopping centres and other large building campuses.
- Versatile® is a unique metal sheet profile which has the aesthetic of tile, but offers all the advantages of a steel sheet. Versatile is sold as a complete system, with its own distinctive roll top ridges, which complement the profile for a cohesive visual statement.

Safintra branch network across South Africa: **Gauteng, Kwazulu-Natal, Western Cape, Mpumalanga, Limpopo, Eastern Cape, Free-State.**

SAFINTRA FACTORY AND WAREHOUSE CATEGORY

WINNER

CHILLEWENI COLD STORAGE SOLUTIONS



Chilleweni Cold Storage Solutions provides cold storage and refrigerated logistics services to several of South Africa's largest brands within the frozen food market. Their new, larger and more improved home in the Randport Industrial Park is strategically located adjacent to the Elands Interchange, a major transport node situated in the well-established industrial hub of Gosforth Park, Germiston. A fresh design approach has given rise to a unique building which compliments the strategic and locational benefits of the building. The harmonious choice of structural elements combined with technology, technical aesthetics, colour, and material has resulted in a visually appealing industrial building fit for purpose. It is a building which enhances the experience of the user and adds value to the immediate context.

Why steel was chosen

Steel speeds up the construction period and is highly recyclable, meaning it can be capitalized on by future generations. It also limits the operational costs during construction. Further reduction in operational costs was achieved through careful selection of material colour, insulation and use of Low-emissivity glass. Office HVAC system designed with reduced chilled glycol supply temperatures to optimise HVAC equipment capital cost and utilize highly efficient primary ammonia plant operating at a Coefficient of Performance of 4.93. Waste heat from compressor discharge used to mechanically dehumidify the receiving and despatch area. All condensate from blower coils harvested and re-utilized for heat rejection in condensers. Highly efficient, two-stage ammonia plant operating at a Low-Temperature Coefficient of Performance of 5.62 and a Medium-Temperature Coefficient of Performance of 4.93. Decreased TEWI (Total Equivalent Warming Impact) vs synthetic and other natural refrigerant options evaluated due to reduced primary and secondary emissions. All-natural refrigerant designed with zero Ozone Depletion Potential and Global Warming Potential. Integral compressor oil cooling providing waste heat for underfloor glycol to prevent frost heave. Notable elements of the project include:

- Longest known freezer in SA, possibly Africa with single throw fans: 55.95m

PROJECT TEAM

Nominator – Global Roofing Solutions | **Client / Developer** – Zenprop Property Holdings

Architect – Empowered Spaces Architects | **Structural Engineer and Engineer** – DC Consulting Engineers

Quantity Surveyor – Schoombie Hartmann | **Project Manager** – Capex Projects | **Main Contractor** – Akhane Construction

Steelwork Contractor and Steel Erector – Steel Band SE Steel Fabrication

Cladding Manufacturer and Supplier – Global Roofing Solutions | **Cladding Contractor** – Cladco

Cladding and Roofing – Global Roofing Solutions | **Steel Detailer** – KRU Detailing cc

SAFINTRA



THE TRUSTED NAME FOR WORLD CLASS ROOFING SYSTEMS

Safintra offers a wide range of sheeting profiles including the highly respected Saflok® and Newlok™ concealed fix systems.

Safintra also supplies a full range of roof system accessories and associated products for a complete cladding solution. These include made-to-order flashings, ventilators and louvres, as well as warranted Fixtite™ Fasteners, the Saftherm™ range of insulation products, and other specialist components.

Safintra offers full technical support services from all branches.

SAFLOK
concealed fix roofing

NEWLOK
standing seam roofing

TUFDEK

classiCORR
corrugated

FLUTELINE

WIDEDEK

Trimflute

VERSATILE

FIXTITE
FASTENERS

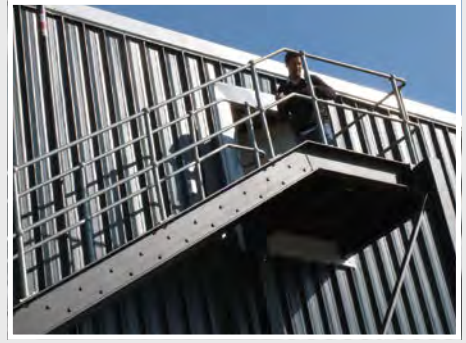
Saftherm
thermal insulation

Western Cape, Eastern Cape, Kwa-Zulu Natal, Free State, Gauteng, Mpumalanga, Limpopo.
Email: info.safintrasa@safalgroup.com / www.safintra.co.za

Affiliated companies throughout SADC, Southern and Eastern Africa. www.safintra.com

A member of the





- Integral compressor oil cooling providing waste heat for underfloor glycol to prevent frost heave.
- Bespoke in-rack blast freezers installed inside the main freezer chambers allowing for integrated blast freezing utilising primary room coils as opposed to dedicated blast freezer room.
- Construction period of 8 months. Most facilities this size take 10 months to a year to complete.

Industrial buildings are characterised by standard 'archetypal features' such as large unbroken facades, blank walls, large spans of repetitive faces and materials which integrate various engineering structures and equipment. Through careful artistic treatment, systematic arrangement and sensible proportioning of these main and pronounced features, the repetitive appearance of a 'standard' industrial building was avoided. Instead, the harmonious choice of structural elements combined with technical aesthetics, colour and materials resulted in a visually appealing industrial building fit for purpose, one which enhances the experience of the user while adding value to its immediate context. Chilleweni Cold Storage Solutions provides cold storage and refrigerated logistics services to several of South Africa's largest brands within the frozen food market. Through well thought out spatial arrangements coupled with quality finishes and design, the user experience is positively enhanced. Low emissivity glazing and strategically

positioned windows allow natural light to filter deep into the office space. It connects the user to the amazing vistas surrounding the site. The office HVAC system is designed with reduced chilled glycol supply temperatures to optimise HVAC equipment efficiency and performance to create a comfortable climate at a reduced operational cost while reducing environmental impact. The staff/ back of house facilities share the same amenity and are not segregated from the main office portion.

For more information, project team interviews and video footage, visit: <https://www.saisc.co.za/project/chilleweni-cold-storage-solutions/>

STRUCTURAL STEELWORK

Completion date of steelwork: October 2018

Completion date of full project: September 2018

Tons of structural steel used: 210

Structural profiles used: Hot and cold rolled profiles

CLADDING

Completion date of cladding: October 2018

Cladding profile / type used: GRS Klip-Tite and GRS Klip-Lok 700

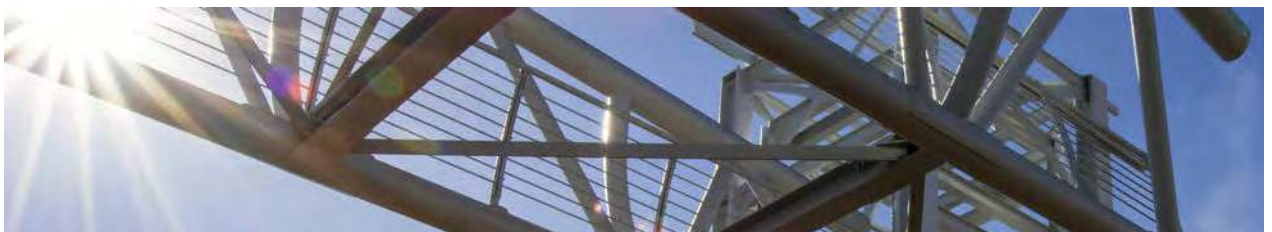
Cladding area / coverage and tonnage: 11 002m² / 58.310 tons



SAISC STEEL AWARDS **BRIDGES CATEGORY**



Steel is the ideal material for bridges in terms of cost-effectiveness and longevity, as well as being less prone to cracking. The benefit of steel over concrete in erection time and logistics makes steel the ideal material for bridge building.



Entries judged in this category

- CTICC Skybridge (Page 66)
- IRPTN Pedestrian Bridges (Page 71)
- Kusile Coal Bridge from Kusile Boiler 5 to Kusile Boiler 6 (Page 72)
- Naspers Skybridge (Page 73)
- New Pedestrian Bridge at Erasmusrand on National Route 1 (Page 73)
- No. 1 Silo Bridge (Page 74)
- The Viper Elevated Woodland Walkway (Page 79)

BRIDGES CATEGORY

WINNER

CTICC SKYBRIDGE



The CTICC Skybridge was intended as an above-ground link between CTICC 1 on the West of Heerengracht Street and CTICC 2 on the East. The client asked the architects to design an enclosed pedestrian skybridge to connect the Cape Town International Convention Centre (CTICC 1) with the CTICC East Expansion (CTICC 2) across the busy Heerengracht Street. Development of the CTICC skybridge was considered critical in enabling the two buildings to function as a single integrated international events hosting venue and providing a seamless visitor's experience.

The curved skybridge with its slender slanted steel columns has an unusually dynamic aesthetic from outside. The curved route inside provides a dynamic visual experience as one moves across the bridge in anticipation of an obscured end destination. The indirect travelling direction guides the visitor's gaze outwards and across the historic Heerengracht Street and allows the bridge to become a unique destination in its own right. This purposefully iconic structure pays tribute to CTICC's core purpose of 'connecting people'.

The bridge was always envisaged as being constructed out of steelwork – to allow maximum views to the sides and to enable construction with minimal disruption to the street below. Universal Beam and Column sections were chosen to frame the concrete floor and roof, which were both cast in sections in between these steel members, with support provided by Bondek sheeting. Universal Column sections were also chosen for the Vertical members, in order to frame the glass panels.

Circular hollow sections, however, were chosen for the diagonal members to minimise the disruption of the view. The same members were also used for horizontal bracing at the roof and floor level, to keep the section sizes down. Large circular hollow sections were also used for the slanting support columns.

Challenges arose due to the weight of sections, which made moving these sections a challenge during both fabrication and erection. The bridge sections were assembled into just two pieces adjacent to the road, allowing these two large pieces

PROJECT TEAM

Nominator – Anchor Steel Projects | **Client / Developer** – Cape Town International Convention Centre
Architect – Convention Architects – a JV between Makeka Design Lab cc, SVA International (Pty) Ltd and van der Merwe Miszewski Architects (Pty) Ltd | **Structural Engineer** – Sutherland | **Quantity Surveyor** – Turner & Townsend
Project Manager – Lukhozi Engineers | **Main Contractor** – Superway Construction
Steelwork Contractor and Steel Erector – Anchor Steel Projects



to be erected using a 440t crane during a road closure on a Sunday. The two parts had never been spliced together before erection, with all dimensions being theoretical. The first real fit was therefore on site, and everything fitted perfectly.

Another challenge was the temporary support of the bridge during erection. This was overcome by introducing the temporary towers, which made the installation much simpler and safer.

Since the bridge was modelled in 3D, an IFC export was provided to the contractor to aid them in the shop drawing process. In turn, they provided their fabrication model in 3D for approval by the engineer and architect, which ensured that the aesthetic intentions of the professional team could be met.

For more information, project team interviews and video footage, visit:
<https://www.saisc.co.za/project/cticc-skybridge/>

STRUCTURAL STEELWORK

Completion date of steelwork: September 2018

Completion date of full project: November 2018

Structural profiles used: UB, UC and CHS sections

BRIDGES CATEGORY

COMMENDATION

IRPTN PEDESTRIAN BRIDGES



In 2013, the City of Ekurhuleni Metropolitan Municipality embarked on an upgrade of their existing transportation route planning and infrastructure in the form of an Integrated Rapid Public Transport Network (IRPTN).

The overall project scope includes the upgrade of the existing road facilities, to add new BRT lanes with sidewalk and median, as well as the construction of nine new station facilities.

With the exception of the pedestrian bridges, the typical layout model that has been deployed throughout the project is similar to that which has been used in the Johannesburg CBD and Cape Town BRT systems. The Stations represent central node points that facilitate the easy access of pedestrians into the BRT system, and the brief to the Architect was to design an aesthetically pleasing solution that provided such access.

The original concept developed by the architect and structural engineer is very similar to the final design that is currently under construction, which involves a curved steel truss type arrangement, made out of mostly circular hollow sections. Structural steelwork was envisaged on this project due to its ease of use for the required spans, the ability for easy erection over existing roads, as well as the overall slim look and feel that arises out of its use in the design.

For more information, project team interviews and video footage, visit: <https://www.saisc.co.za/project/irptn-pedestrian-bridges/>

PROJECT TEAM

Nominator and Steelwork Contractor – Khombanani | **Client** – Ekurhuleni Metropolitan Municipality
Structural Engineer – Smec South Africa | **Engineer and Project Manager** – LTE Consulting
Main Contractor – Stefanutti Stocks / Khombanani Steel JV | **Main Contractor** – King Civils | **Steel Erector** – Onpar Steel
Cladding Manufacturer and Supplier – Global Roofing Solutions | **Cladding Contractor** – Roofline
Corrosion Protection (paintwork contractors) – Dram Industrial Painters and RSC

KHOMBANANI STEEL

Our quest is lasting impressions



**SPECIALIST STRUCTURAL AND ARCHITECTURAL
STEELWORK CONTRACTOR**

Level 2 BBBEE contributor and value added supplier.

Procurement recognition effectively @ 125%

Tel: +27 11 394 8780 • Fax: +27 11 970 1694 • E-mail: marten@khombanani.co.za

SAFAL STEEL INNOVATION CATEGORY



Entries judged in this category

- Christian Revival Church (Page 65)
- Cuboid 3 Modular POD (Page 66)
- Durban Christian Centre – New Auditorium Campus (Page 67)
- House Skosana (Page 71)
- Project Sishen Modular Plant Expansion Project (Page 75)

SAFAL STEEL IS BUILDING AFRICA WITH PRIDE

Safal Steel is a South African manufacturer of world-class coated steel, using a coating alloy of aluminium and zinc which is globally acknowledged as the most advanced of its kind to deliver an extended service life to steel.

Its metal coated steel is sold as **Zincal®**. Colour coated Zincal is sold as **Colorplus®** or **Optima®** in an array of colours that are both durable and beautiful.

Specialist Colorplus variants include Matt and Textured finishes, and Colorplus Ultima® with PVDF paint finish specifically made for highly corrosive conditions in marine, coastal and industrial areas.

Safal Steel prides itself on providing exceptional technical support to its customers throughout Africa. The company also hosts regular training sessions for roll formers and installers, and Continuous Professional Development (CPD) talks for specifying professionals, to educate and inform the wider industry on the benefits of coated steel, and its lasting value as a building material that is both timeless and completely contemporary.

Safal Steel is a member of The Safal Group, the largest steel roofing producer in Africa.

The Safal Group was first in Africa to introduce Aluminium-Zinc (AZ) Coating Technology for steel, and remains its leading producer of this world class product.

The Safal Steel plant located in Cato Ridge, KwaZulu Natal was started in 2008 and was completely operational by 2010. The 14.4-hectare site has 30 000 square metres under roof, producing Aluminium-Zinc coated steel coils which are supplied to both local and global markets.

All Safal Steel products are made to world-class standards; every coil is subject to numerous quality assurance tests during manufacture. Safal Steel and its allied coating plants in the Safal Group are also amongst the greenest steel producers in Africa in terms of air emission and water usage, and up to 95% of all waste produced on site (including steel) is recycled.

Contact: Head of Marketing, Sally Stromnes-Beaumont **Telephone:** + 27 31 782 5500 **Email:** sally.stromnes@safalgroup.com

PARTNER SPONSORS

Pro Roof Steel & Tube



Contact:

Pieter Potgieter
Tel: +27 (0)82 376 5795
Email: peter@prorooft.co.za
Website: www.prorooft.co.za

In these trying economic times there is no time to rest on your laurels and reputation, you need to stand up, man up and be counted, you must change with the times, you must evolve.

There have been a number of changes at our tube mills over the last twelve to eighteen months allowing us to stand amongst the more well known tubing manufacturers in South Africa.

While others have down sized we installed a new high speed small bore tube mill and upgraded all our existing tube mills to dramatically increase outputs and efficiencies allowing for better recoveries and thus reducing costs.

Having now been SABS Certified to manufacture scaffolding, conveyor and water pipe, the evolution continues from a small bore tube mill servicing the mainly merchants to an innovative tube and pipe manufactures servicing a large spectrum of the South African steel market.

Our lip channel and roofing facilities continue to service the building industry with distinction though many developments in South Africa, while our service centre supplies merchants and manufacturers with flat sheets and slits.

Although delays in the completion of our 40 000 ton per month steel making facility in Meyerton have occurred we will commence production in January 2020 evolving once again from a medium mill steel producer to an industrial giant servicing not only South Africa but the greater Sub Saharan Africa with beams, columns, IPE sections, angles, round bar, squarebar, re-bar and window sections.

We invite you, the captains of industry, to join our evolution and grow with us.

Direct your enquiries to Peter Potgieter, peter@prorooft.co.za or 0823765795.

Our World-Class Coated Steel is Building Africa with Pride

Safal Steel is the sole manufacturer of Aluminium-Zinc coated steel coils in Southern Africa. The coating on its steel is the most widely used alloy worldwide to deliver extended service life to steel, and offers excellent thermal efficiency. Its metallic finish material is sold as **Zincal®** and its factory pre-painted **Zincal®** is sold as **Colorplus®** and **Optima®**. **Safal Steel** supplies a world-class product, made with South African talent, to local and global markets. Our factory in KwaZulu-Natal brings new skills and employment to the area, and its manufacturing processes are amongst the greenest of any steel producers in Africa in terms of air emission and water usage. And up to 95% of all waste produced (including steel) is recycled. Which are facts of which we can all be proud.

www.safalsteel.co.za | 031 782 5500

A member of the



Stewarts & Lloyds Holdings (Pty) Ltd



Contact:

Mandy de Oliveira

Tel: +27 11 553 8500

Fax: +27 (0)11 553 8518

Email: mandyd@sltrading.co.za

Website: www.stewartsandlloyds.co.za

Stewarts & Lloyds has been a leader in the South African steel industry since 1903. As part of its mission to ensure the thriving future of the South African steel industry, it has once again proudly partnered with the Southern African Institute of Steel Construction (SAISC) for its annual Steel Awards.

The Steel Awards is considered as the Oscars of the steel industry, and is a highlight on the industry's calendar every year, showcasing the use of steel in creative construction projects. Stewarts & Lloyds is one of 14 sponsors for the prestigious event, which is set to attract as many as 900 attendees at 3 locations, running concurrently across the country.

Despite challenges faced in the steel industry, Stewarts & Lloyds has been able to continue to grow from strength to strength. Through its 32 branches across Southern Africa, Stewarts & Lloyds is synonymous with excellent service and quality products, which include a wide range of steel and tube, pipes, fittings, valves, irrigation, fencing, roofing and hardware. The company is proud to serve industries like engineering, mining, rural water, chemical, petro-chemical, automotive, agriculture, water reticulation, building and construction, fire protection and local authorities across the whole of South Africa.

With over 110 years of trading experience, Stewarts & Lloyds remains committed to offering a wide and innovative range of steel products to the engineering and civil industries.

PRO ROOF
STEEL & TUBE

Proud manufacturer of • Tubing and Lip Channels
• Roofing and Rainwater Goods • Sheet • Slit
• Plate and Coil • Gates and Fencing Products
• Angle Iron • Channels and IPE sections.

• Vereeniging • Pretoria • Cape Town
• www.prorooft.co.za
0861 776 7663

STEWARTS & LLOYDS

Steel suppliers with a wide range of structural steel, structural tube, steel pipe fittings, valves, flanges, pumps, irrigation equipment and industrial hardware.

32 BRANCHES NATIONWIDE

Customer care: 0860 10 27 99
info@sltrading.co.za
www.stewartsandlloyds.co.za

NJR Steel

WHOLESALE & RETAIL

All our NJR Steel branches offer a wholesale and retail steel service, and our retail shops are fully stocked with steel and related paint and hardware products, providing our customers with a fast and friendly shopping experience.

Besides steel, products sold in these one-stop-shops include welding supplies, cutting and grinding discs, sliding gate wheel kits, fasteners, sliding door systems, paint, security gate locks, decorative mild steel and ornamental castings, and every other hardware product needed when working with steel.

Whether you are an owner builder, building contractor, or planning a DIY experience, we believe that no project is too big or too small for NJR Steel.

20 Branches • 5 Provinces

Trusted since 1980

www.njrsteel.co.za

To view our online catalogue, or to request a quote, please visit our website www.njrsteel.co.za



6 SIDMOUTH AVENUE ORANJEZICHT

Nominator Chris Wood Architect
Architect Chris Wood Architect
Structural Engineer By Design Consulting Eng
Main Contractor Arba Construction
Steelwork Contractor Arba Construction
Cladding Manufacturer Youngman Roofing
Cladding Supplier Youngman Roofing



<https://www.saisc.co.za/project/6-sidmouth-avenue-oranjezicht/>

AMKA PRODUCTS (PTY) LTD CAMPUS DEVELOPMENT

FINALIST

Nominator Ferro Eleganza (Pty) Ltd
Steelwork Contractor Ferro Eleganza (Pty) Ltd
Steel Erector Ferro Eleganza (Pty) Ltd
Corrosion Protection (paintwork contractor) Dram Industrial
Painting Contractors



<https://www.saisc.co.za/project/amkaproducts/>

ARB DISTRIBUTION CENTRE

FINALIST

Nominator Cousins Steel International
Client / Developer ARB Electrical
Architect ARC Design
Quantity Surveyor Oliveir & Partners
Main Contractor Bantry Construction
Steel Erector RS Rigging
Cladding Manufacturer Safal
Cladding Supplier Global Roofing Solutions
Roofing and Cladding Global Roofing Solutions
Cladding Contractor Ferrum Trading



<https://www.saisc.co.za/project/arb-distribution-centre/>

ARTEK 4 ARCHITECTS

FINALIST

Nominator Shospec (Pty) Ltd
Client / Developer and Architect Artek 4 Architects
Structural Engineer and Engineer Martin & Associates
Project Manager and Main Contractor Shospec (Pty) Ltd
Steelwork Contractor and Steel Erector Shospec (Pty) Ltd
Cladding Manufacturer Safintra South Africa
Cladding Supplier and Contractor Four Seasons



<https://www.saisc.co.za/project/artek-4-architects/>

AUTO BAVARIA WATERFALL MIDRAND

FINALIST

Nominator, Nomination Document Submission and Structural Steel Detailer KRU Detailing cc
Client / Developer Abland (Pty) Ltd
Architect Boogertman & Partners (Pty) Ltd
Structural Engineer and Engineer Kantley & Templer Consulting Engineers
Quantity Surveyor Quanticost
Main Contractor Mike Buyskes Construction (Pty) Ltd
Steelwork Contractor and Steel Erector Central Welding Works (Pty) Ltd
Cladding Manufacturer, Supplier and Contractor Pinnacle Cladding
Corrosion Protection (paintwork contractor) Dram Industrial Painting Contractors



<https://www.saisc.co.za/project/auto-bavaria-waterfall-midrand/>

BAIC (Beijing Automotive Industry Holding Company, Ltd) AUTOMOTIVE ASSEMBLY FACILITY

Nominator Saffintra South Africa
Client / Developer BAIC BIDR
Architect Studio d Arc Architects
Structural Engineer Uhambiso Engineering
Quantity Surveyor Rousseau Probert Elliott Quantity Surveyors
Project Managers Uhambiso Engineering & Studio d Arc Architects
Main Contractor Head Office WBHO
Cladding Manufacturer and Supplier Saffintra South Africa
Cladding Contractor Cladall



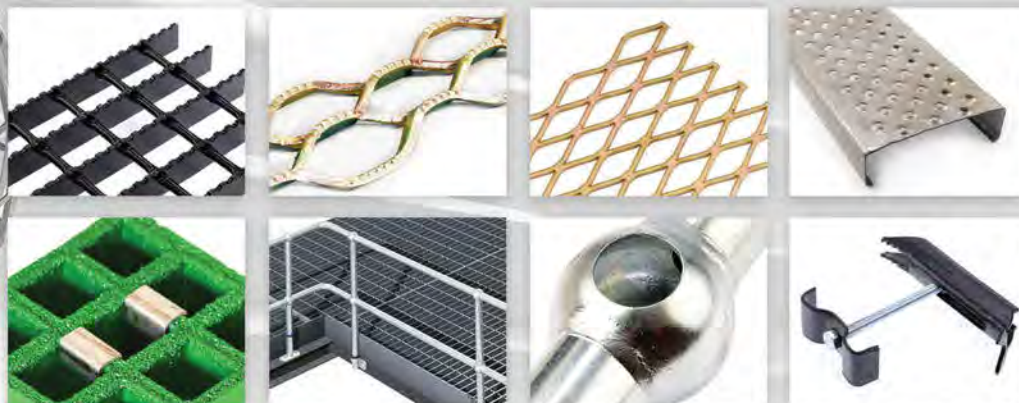
<https://www.saisc.co.za/project/baic-beijing-automotive-industry-holding-company-ltdautomotive-assembly-facility/>

VE
AM
VITAL ENGINEERING
& ANGUS MCLEOD

VITAGRID

The **Leading Manufacturer** in Steel and Fibreglass Grating, Stairtreads, Mesh, Expanded Metal and Handrail Systems

GRATINGS • HANDRAILS • EXPANDED METAL • MESH • STAIRTREADS • FIBERGLASS



Since 1939 **Angus McLeod** and **Vital Engineering** have established a reputation for quality and service. Our brand names of **Vitagrid**, **Maclock** and **Vitex** have become synonymous with **versatility**, **quality** and **service**. Manufacture of all our gratings, stairtreads, handrails and expanded metal products is strictly controlled. We are able to cater for standard panels, stairtreads and handrails in addition to offering a cut-to-size and tailoring service. Meeting and surpassing customer needs are our goals!

+27 11 898 8500
Email: sales@gratings.co.za
www.vitagrid.com

Vital Sales Durban
+27 31 902 3059
Email: vitaldbn@gratings.co.za

Vital Sales Cape Town
+27 21 534 1429
Email: vitalct@gratings.co.za

OVER
70
 YEARS YOUNG
 & GROWING

ISO 9001
 CERTIFICATION
Intertek

BBI PACKERS

FINALIST

Nominator Safintra South Africa
Client / Developer Indigo Fruit Farming
Architect Bespoke Architects
Structural Engineer and Engineer Masomo Eneengineers
Quantity Surveyor and Project Manager Feroqs Consult
Main Contractor Ikotwe
Steelwork Contractor and Steel Erector NJW Engineering Services
Cladding Manufacturer and Supplier Safintra South Africa
Cladding Contractor Roofing Solutions
Corrosion Protection (paintwork contractor) IPS Industrial Painting Services



<https://www.saisc.co.za/project/bbi-packers-hoedspruit/>

BID FOOD NELSPRUIT

Nominator Safintra South Africa
Client / Developer Bidvest Food Services
Architect Empowered Spaces
Structural Engineer Sotiralis Consulting Engineers
Main Contractor Bantry Construction Services
Steelwork Contractor Cerbon
Steel Erector Cerbon
Cladding Manufacturer Safintra South Africa
Cladding Supplier Safintra South Africa
Cladding Contractor Cerbon



<https://www.saisc.co.za/project/bid-food-nelspruit/>

CAMP JAO (PAGE 48)

COMMENDATION

Nominator, Steelwork Contractor and Steel Erector SE Steel Fabrication (Pty) Ltd
Client / Developer Ngamiland Adventure Safaris (Pty) Ltd
Architect Silvio Rech + Lesley Carstens Architecture and Interior Architecture
Structural Engineer and Engineer PLB Engineers
Quantity Surveyor Q24U
Project Manager SE Steel Fabrication / QS4U
Main Contractor Lodge Builders Botswana
Structural Steel Detailer KRU Detailing cc
Cladding Manufacturer Fibre Roofing



<https://www.saisc.co.za/project/camp-jao/>

CCBSA MEZZANINE OFFICE

FINALIST

Nominator WSP
Client / Developer CCBSA
Architect Flaneur Architects
Structural Engineer WSP
Quantity Surveyor JS & Associates Quantity Surveyors cc
Project Manager WSP
Main Contractor WNR Construction Group
Steelwork Contractor and Steel Erector RSB Contracts
Corrosion Protection (galvanizing) RSB Contracts
Corrosion Protection (paintwork contractor) RSB Contracts



<https://www.saisc.co.za/project/ccbsa-mezzanine-office/>

CHILLEWENI COLD STORAGE SOLUTIONS (PAGE 50)

WINNER

Nominator, Cladding Manufacturer and Supplier, Cladding and Roofing Global Roofing Solutions
Client / Developer Zenprop Property Holdings
Architect Empowered Spaces Architects
Structural Engineer and Engineer DG Consulting Engineers
Quantity Surveyor Schoombie Hartmann
Project Manager Capex Projects
Main Contractor Akhane Construction
Steelwork Contractors and Steel Erectors
 Steel Band Construction cc / SE Steel Fabrication (Pty) Ltd
Cladding Contractor Cladco
Steel Detailer KRU Detailing cc


<https://www.saisc.co.za/project/chilleweni-cold-storage-solutions/>

CHRISTIAN REVIVAL CHURCH (PAGE 46)

COMMENDATION

Nominator and Steelwork Contractor Tass Engineering
Client / Developer Christian Revival Church
Architect DBM Architects JHB (Pty) Ltd.
Structural Engineer Fortem Consulting Engineers (Pty) Ltd.
Civil Engineer Tekciv Consulting Engineers
Quantity Surveyor Mellet Quantity Surveyors
Project Manager Deo Gloria Developments (Pty) Ltd
Electrical Engineer NALA Consulting Engineers(Pty) Ltd
Mechanical Engineer PV3 Engineers
Main Contractor Mike Buyskes Construction (Pty) Ltd


<https://www.saisc.co.za/project/christian-revival-church/>

CMH KEMPSTER FORD DEALERSHIP

FINALIST

Nominator Global Roofing Solutions
Client / Developer CMH
Architect Hans Coetzee Architect
Structural Engineer NJV Consulting Engineers
Project Manager Hans Coetzee Architect
Main Contractor Impact Engineering
Steelwork Contractor Impact Engineering
Steel Erector Impact Engineering
Roofing and Cladding Global Roofing Solutions


<https://www.saisc.co.za/project/cmh-kempster-ford-dealership/>

COMAIR SIMULATOR 3 BUILDING

FINALIST

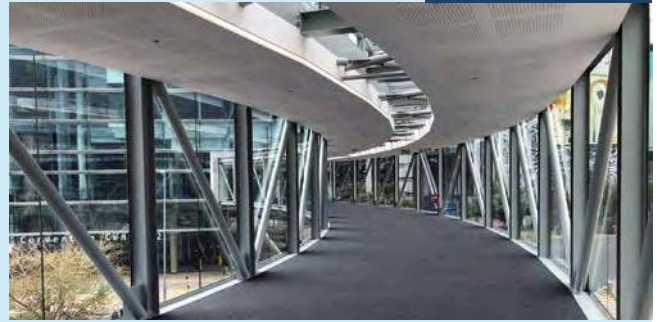
Nominator Ferro Eleganza (Pty) Ltd
Steelwork Contractor Ferro Eleganza (Pty) Ltd
Steel Erector Ferro Eleganza (Pty) Ltd
Corrosion Protection (paintwork contractor) Industrial Painting Services (Pty) Ltd
Cladding and Roofing Global Roofing Solutions
Architects WMS Architects


<https://www.saisc.co.za/project/com-air-simulator-3-building/>

CTICC SKYBRIDGE (PAGE 54)

WINNER

Nominator Anchor Steel Projects
Client / Developer Cape Town International Convention Centre
Architect Convention Architects – a JV between Makeka Design Lab cc, SVA International (Pty) Ltd and van der Merwe Miszewski Architects (Pty) Ltd
Structural Engineer Sutherland
Quantity Surveyor Turner & Townsend
Project Manager Lukhozi Engineers
Main Contractor Superway Construction
Steelwork Contractor and Steel Erector Anchor Steel Projects



<https://www.saisc.co.za/project/cticc-skybridge/>

CUBOID 3 MODULAR POD

FINALIST

Nominator and Architect BBa Architects
Client / Developer Consort 13 partnership
Structural Engineer DNS Engineers
Main Contractor and Cladding Contractor Zestiblox cc
Steelwork Contractor and Steel Erector Geldenhuys Steel
Cladding Manufacturer Alltodeck and Foxgroup
Roofing and Cladding Global Roofing Solutions
Site Rigger GR Travel Tops
Corrosion Protection (paintwork contractor) Geldenhuys Steel



<https://www.saisc.co.za/project/cuboid-3-modular-pod/>

CUMMINS JOHANNESBURG RELOCATION PROGRAM WATERFALL

FINALIST

Nominator Ferro Eleganza (Pty) Ltd
Steelwork Contractor Ferro Eleganza (Pty) Ltd
Steel Erector Ferro Eleganza (Pty) Ltd
Corrosion Protection (paintwork contractor) IPS Industrial Painting Services
Cladding and Roofing Global Roofing Solutions



<https://www.saisc.co.za/project/cummins-johannesburg-relocation-program-waterfall/>

CUMMINS SA REGIONAL OFFICE

FINALIST

Nominator, Building Roofing and Cladding Manufacturer Global Roofing SA
Architect Empowered Spaces
Civil and Structural Engineers DG Consulting Engineers
Quantity Surveyor Schoombie Hartmann
Project Manager CAPEX Projects
Mechanical Engineers and WSP Group Africa
Other Consultants Daniel Rebel Landscape Architects
Principal Contractors Group Five
Electrical Engineers QUAD AFRICA
Consulting Fire Consultants WSP Group Africa
Corrosion Protection (paintwork contractor) IPS Industrial Painting Contractors



<https://www.saisc.co.za/project/cummins-southern-africa-regional-office-project/>

DEPARTMENT OF HEALTH – TOWNHILL OFFICE PARK (PAGE 24)

COMMENDATION

Nominator Shospec (Pty) Ltd
Client / Developer Department of Health
Architect SMS Design Architects
Structural Engineer and Engineer Martin & Associates
Quantity Surveyor TMS
Project Manager D-Construction / TOP JV
Main Contractor TOP J.V
Steelwork Contractor and Steel Erector Shospec (Pty) Ltd
Cladding Supplier and Contractor Four Seasons


<https://www.saisc.co.za/project/7906/>

DURBAN CHRISTIAN CENTRE – NEW AUDITORIUM CAMPUS (PAGE 10)

WINNER

Nominator and Structural Engineer NJV Consulting (Pty) Ltd
Client / Developer Durban Christian Centre
Architect Elphick Proome Architects Incorporated
Quantity Surveyor RLB Pentad Quantity Surveyors (Lead), Abakali
Project Manager M3 Africa Consulting
Main Contractor Steffanuti Stocks Building KZN
Steelwork and Cladding Contractor Impact Engineering (Pty) Ltd
Steel Erector CMGC Projects
Cladding Manufacturer Global Roofing Solutions
Corrosion Protection Phoenix Galvanising and Top Coat
Fabrication Detailing Strutech 3D Modelling
Arch Cladding Sub Contractor Scope Of Work


<https://www.saisc.co.za/project/durban-christian-centre-new-auditorium-campus/>

EDUPLEX SPORT CROSSFIT

FINALIST

Nominator SNAPP Architects (Pty) Ltd
Client / Developer H.A.S.S. Properties (Pty) Ltd
Architectural Team SNAPP Architects (Pty) Ltd
Structural Engineer SF van Zyl Consulting Engineers
Main Contractor H.A.S.S. Properties (Pty) Ltd
Steelwork Contractor and Steel Erector Ferro Eleganza (Pty) Ltd
Cladding Manufacturer Global Roofing Solutions
Cladding Supplier L.R.S. Building Contractors & Suppliers
Cladding Contractor L.R.S. Building Contractors & Suppliers


<https://www.saisc.co.za/project/eduplex-sport-crossfit/>

ELDO RIDGE ESTATE RESIDENCE

Nominator SNAPP Architects (Pty) Ltd
Architectural Team SNAPP Architects (Pty) Ltd
Structural Engineer Dippenaar & Lapage (Pty) Ltd
Main Contractor NGA Construction (Pty) Ltd
Steelwork Contractor N2 Steelworks
Steel Erector N2 Steelworks
Cladding Manufacturer Safintra South Africa
Cladding Supplier L.R.S. Building Contractors & Suppliers
Cladding Contractor L.R.S. Building Contractors & Suppliers


<https://www.saisc.co.za/project/eldo-ridge-estate-residence/>

FEZILE DABI STADIUM, PARYS

FINALIST

Nominator CADCON (Pty) Ltd
Structural Engineer Aecom
Quantity Surveyor and Main Contractor WBHO
Steelwork Contractor CADCON (Pty) Ltd
Steel Erector CADCON (Pty) Ltd
Steel Detailer MONDO CANE
Cladding Supplier Clotan Steel
Cladding Contractor CADCON (Pty) Ltd
Corrosion Protection (paintwork contractor) Dram Industrial Coatings



<https://www.saisc.co.za/project/fezile-dabi-stadium-parys/>

FORM-SCAFF DISTRIBUTION, PHASE 2

FINALIST

Nominator Futurecon
Client / Developer Wealthgate Investments 45 (Pty) Ltd
Architect Boogertman and Partner
Structural Engineer J3 Engineering
Quantity Surveyor and Project Manager Henry Riley Construction Consultants (Pty) Limited
Main Contractor, Steelwork Contractor and Steel Erector Futurecon
Cladding Manufacturer, Supplier and Cladding Contractor Hollyberry Roofing (Pty) Ltd
Roofing and Cladding Global Roofing Solutions



<https://www.saisc.co.za/project/form-scaff-distribution-phase-2-warehouse-office-block/>

FOURWAYS MALL PROMOTIONS COURT (PAGE 44)

WINNER

Nominator and Steelwork Contractor CADCON (Pty) Ltd
Client / Developer Azrapart (Pty) Ltd
Architect Boogertman + Partners
Structural Engineer and Engineer WSP Africa
Quantity Surveyor Quanticost QS
Project Manager SIP Project Managers
Main Contractor Mota-Engil Construction South Africa
Steel Erector Ijaca
Cladding Contractor Hulabond Cladding
Skylight Rainbow Skylight S.A. (Pty) Ltd
Corrosion Protection (paintwork contractor) TDS Contractors



<https://www.saisc.co.za/project/fourways-mall-promotions-court/>

GAMSBURG ZINC PROJECT (PAGE 34)

COMMENDATION

Nominator ELB Engineering Services
Client / Developer Vedanta Resources
Structural Engineer Consultauri
Engineer, Project Manager, Main Contractor and Steel Erector ELB Engineering Services
Quantity Surveyor CD Venter Land Surveyors
Steelwork Contractor Louwill Lefa (Pty) Ltd
Cladding Manufacturer ArcelorMittal South Africa
Cladding Supplier Global Roofing Solutions
Cladding Contractor Abraham Hansen
Corrosion Protection (paintwork contractor) Louwill Lefa (Pty) Ltd



<https://www.saisc.co.za/project/gamsberg-zinc-project/>

HAASENDAL GABLES

FINALIST

Nominator Safintra South Africa
Client / Developer Dorpstraat Properties with POD
Architect SVA International
Structural Engineer and Engineer KLS Engineers
Quantity Surveyor IQS
Project Manager MDSA
Main Contractor Isipani
Steelwork Contractor and Steel Erector LRJ Steel
Cladding Manufacturer and Supplier Safintra South Africa
Cladding Contractor Cladco


<https://www.saisc.co.za/project/haasendal-gables/>

HAZENDAL WINE ESTATE – NEW ADMINISTRATION CENTER

FINALIST

Nominator Meny-Gibert and Associates
Client / Developer Hazendal Wine Estate
Architect Michael Hackner Architects
Structural Engineer Meny-Gibert and Associates
Quantity Surveyor Prodigious
Main Contractor R + N Master Builders
Steelwork Contractor and Steel Erector TGS Concepts
Cladding Manufacturer Marley Building Systems
Cladding Supplier and Contractor First African Claddings
Corrosion Protection (galvanising) Galvatech


<https://www.saisc.co.za/project/hazendal-wine-estate-new-administration-center/>

HAZENDAL WINE ESTATE – NEW EDUCATIONAL PLAY CENTRE

FINALIST

Nominator Michael Hackner Architects
Client / Developer Hazendal Wine Estate
Architect Michael Hackner Architects
Structural Engineer JTL Structures cc
Quantity Surveyor Prodigious
Main Contractor R + N Master Builders
Steelwork Contractor and Steel Erector TGS Concepts
Corrosion Protection(galvanising) Galvatech


<https://www.saisc.co.za/project/hazendal-wine-estate-new-educational-play-center/>

HOPE & LIGHT SCHOOL

Nominator Siteform
Architect BV Argitekto
Structural Engineer By DESIGN Structural Engineering
Main Contractor Inyathi Infra (Pty) Ltd
Steelwork Contractor Siteform
Cladding Manufacturer UFCC
Cladding Contractor Siteform


<https://www.saisc.co.za/project/hope-light-school/>

HOUSE 348 ECO

FINALIST

Nominator Recreate Architects
Client / Developer Structures 2000
Architect Recreate Architects
Structural Engineer Johan van der Wald
Main Contractor Ebcon Builders
Steelwork Contractor Structures 2000
Steel Erector Structures 2000
Cladding Manufacturer Allied Steelrode
Cladding Supplier Structures 2000
Cladding Contractor Mordt Engineering



<https://www.saisc.co.za/project/house-348-eco/>

HOUSE BOTHA

Nominator Recreate Architects
Client / Developer Anton + Daneli Botha
Architect Recreate Architects
Structural Engineer Les Reeve t/a SRL Design
Main Contractor Recreate Developers
Steelwork Contractor and Steel Erector Live Custom Designs
Cladding Manufacturer Global Roofing Solutions
Roofing and Cladding Global Roofing Solutions
Cladding Supplier and Contractor Roofing Options



<https://www.saisc.co.za/project/house-botha/>

HOUSE OLDFIELD MIDLANDS

Nominator Cousins Steel International (CSI)
Client / Developer The Stonehouse Trust
Architect Joy Brazler Architects
Structural Engineer, Engineer, Project Manager and Steelwork Contractor CSI
Steel Erector Kalleb Rigging
Cladding Manufacturer ArcelorMittal South Africa
Cladding Supplier Global Roofing
Cladding Contractor Kalleb Rigging
Corrosion Protection (galvanizing) Phoenix Galvanising



<https://www.saisc.co.za/project/house-oldfield-midlands/>

HOUSE SHEPHERD

FINALIST

Nominator C-Plan Structural Engineers
Client / Developer Colin Shepherd
Structural Engineer C-Plan Structural Engineers
Main Contractor Rob Building Construction
Steelwork Contractor Estee Automation
Steel Erector Estee Automation



<https://www.saisc.co.za/project/house-shepherd/>

HOUSE SKOSANA

Nominator Aura Entle
Client / Developer RS Skosana
Structural Engineer Arrow Point
Main Contractor GTP Holdings
Steelwork Contractor Aura Entle
Steel Erector Aura Entle



<https://www.saisc.co.za/project/house-skosana/>

IRPTN PEDESTRIAN BRIDGES (PAGE 56)

Nominator and Steelwork Contractor Khombanani Steel
Client Ekurhuleni Metropolitan Municipality
Structural Engineer SMEC South Africa
Engineer and Project Manager LTE Consulting
Main Contractor Stefanutti Stocks / Khombanani Steel JV
Main Contractor King Civils
Steel Erector Onpar
Steel Cladding Manufacturer and Supplier Global Roofing Solutions
Cladding Contractor Roofline
Corrosion Protection (paintwork contractor) Dram Industrial Painting Contractors
Corrosion Protection (paintwork contractor) RSC

COMMENDATION



<https://www.saisc.co.za/project/irptn-pedestrian-bridges/>

JRL BRAND EXPERIENCE CENTRE

Nominator, Steelwork Contractor and Steel Erector SE Steel Fabrication (Pty) Ltd
Client / Developer SMH Group
Architect ICM Architectural Studio
Structural Engineer and Engineer Themba Consulting Engineers Africa
Quantity Surveyor Stuart Ray Skead
Project Manager and Main Contractor Sacola Construction
Corrosion Protection (paintwork contractor) Dram Industrial Painting Contractors
Nomination Document Submission KRU Detailing cc

FINALIST

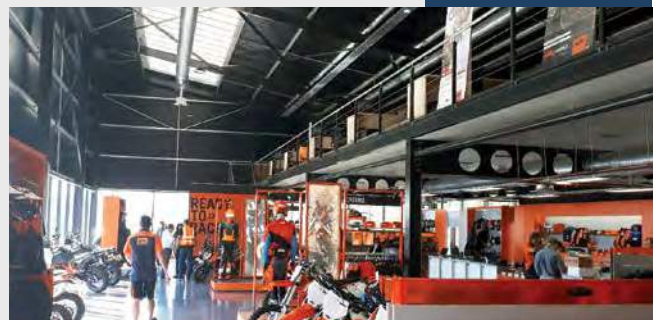


<https://www.saisc.co.za/project/jrl-brand-experience-centre-lonehill/>

KTM RACEWORX

Nominator Macsteel
Client / Developer Multiplant
Structural Engineer JandC Structural and Civil Design
Main Contractor JandC Structural and Civil Design
Steelwork Contractor Riggers & Erectors
Steel Erector Riggers & Erectors
Cladding Manufacturer ArcelorMittal South Africa
Cladding Profiler, Supplier and Cladding Contractor Clotan Building Systems

WINNER



<https://www.saisc.co.za/project/ktm-raceworx/>

KUSILE COAL BRIDGE FROM KUSILE BOILER 5 TO KUSILE BOILER 6

FINALIST

Nominator Shanahan Engineering
Client/ Developer MHPSA
Structural Engineer Genrec
Main Contractor MHPSA
Steelwork Contractor MHPSA
Steel Erector Shanahan Engineering
Cladding Manufacturer Global Roofing Solutions
Cladding Supplier Global Roofing Solutions
Cladding and Roofing Global Roofing Solutions
Cladding Contractor Southey



<https://www.saisc.co.za/project/kusile-coal-bridge-from-kusile-boiler-5-to-kusile-boiler-6/>

LOUWLARDIA POCKET 3 WAREHOUSE

FINALIST

Nominator, Steelwork Contractor and Steel Erector SE Steel Fabrication (Pty) Ltd
Client / Developer Fortress REIT Limited
Architect ICM Architecture
Structural Engineer and Engineer Sotiralis Consulting Engineers
Quantity Surveyor Quanticost Pretoria
Main Contractor Archstone Construction
Cladding Manufacturer and Supplier Clotan Steel
Cladding Contractor GM Roofing
Corrosion Protection (paintwork contractor) Dram Trading
Steel Detailer / Nomination Document KRU Detailing cc



<https://www.saisc.co.za/project/louwlardia-pocket-3-warehouse/>

LP8 MINI WAREHOUSES WATERFALL

FINALIST

Nominator Saffintra South Africa
Client / Developer Attacq Waterfall Investment Company
Architect ICM Architectural Studio
Structural Engineer DG Consulting Engineers
Engineer C-Plan Civil Engineers
Quantity Surveyor Liyema Quantity Surveyors
Project Manager ICM Architectural Studio
Main Contractor Akhane Construction
Steelwork Contractor Steel Band Construction
Cladding Contractor Tate and Nicholson
Steel Detailer / Nomination Document KRU Detailing cc



<https://www.saisc.co.za/project/lp8-mini-warehouses-waterfall/>

MAFUBE COLLIERY NOOITGEDACHT MINE, MIDDELBURG

FINALIST

Nominator Ferro Eleganza (Pty) Ltd
Steelwork Contractor Ferro Eleganza (Pty) Ltd
Steel Erector Ferro Eleganza (Pty) Ltd
Cladding Contractor Ferro Eleganza (Pty) Ltd
Corrosion Protection (galvanizing) Armco Superlite (Pty) Ltd



<https://www.saisc.co.za/project/mafube-colliery-nooitgedacht-mine-middelburg-relocation-of-emv-workshop/>

MEGA SHED

Nominator Global Roofing Solutions
Architect MWA Architecture
Structural Engineer Galatis and Associates
Roofing Contractor Vivace Roofing cc
Roofing and Cladding Supplier Global Roofing Solutions
Main Contractor Prodevcon Construction

FINALIST


<https://www.saisc.co.za/project/mega-shed/>

MILLROAD INDUSTRIAL PARK

Nominator Safintra South Africa
Client / Developer Growthpoint Properties
Architect Loudon Perry Anderson
Structural Engineer Aurecon
Quantity Surveyor MLC
Main Contractor Group 5 Coastal
Steelwork Contractor Mazor Steel
Steel Erector Mazor Steel
Cladding Manufacturer Safintra South Africa
Cladding Contractor Chartwell Roofing

FINALIST


<https://www.saisc.co.za/project/mill-road-industrial-park-phase-1/>

NASPERS SKYBRIDGE

Nominator Anchor Steel Projects
Client / Developer Cape Town International Convention Centre
Architect Osmond Lange Architects + Planners
Structural Engineer Sutherland
Quantity Surveyor Turner & Townsend
Project Manager Lukhozi Engineers
Main Contractor Superway Construction
Steelwork Contractor and Steel Erector Anchor Steel Projects
Cladding Supplier Two Oceans Metal
Cladding Contractor Naturally Slate

FINALIST


<https://www.saisc.co.za/project/naspers-skybridge/>

NEW PEDESTRIAN BRIDGE AT ERASMUSRAND ON NATIONAL ROUTE 1

Nominator CADCON (Pty) Ltd
Client / Developer SANRAL
Structural Engineer Superstructures
Engineer, Quantity Surveyor and Project Manager LEO Consulting
Main Contractor Teichmann Ndungane
Steelwork Contractor CADCON (Pty) Ltd
Steel Erector On Par
Corrosion Protection (paintwork contractor) DRAM Industrial
Painting Contractors

FINALIST


<https://www.saisc.co.za/project/new-pedestrian-bridge-at-erasmusrand-on-national-route-1/>

NEW SCHOOL – DIAMANDSHOOGTE & BOSHOF PRIMARY SCHOOL

FINALIST

Nominator Siteform
Client DBSA
Principal Consultant and Project Managers WSP Group Africa (Pty) Ltd
Architect Cube Architects
Light Weight Steel Engineer Thusabatho Consulting
Steelwork and Cladding Contractor Siteform
Quantity Surveyor DPD
Main Contractor Sedtrade Sky Construction
Cladding Manufacturer Global Roofing Solutions



https://www.saisc.co.za/project/diamandshoogte_boshof_primary/

NO. 1 SILO BRIDGE

FINALIST

Nominator and Architect Loudon Perry Anderson Architects
Client / Developer V&A Waterfront Holdings (Pty) Ltd
Structural Engineer Sutherland Engineers
Facade and HVAC Engineer Arup Engineers
Services Engineer Solution Station
Quantity Surveyor MLC Group
Project Manager Principle Agent Architect
Main Contractor R+N Master Builders (Pty) Ltd
Steelwork Contractor and Steel Erector Prokon Services (Pty) Ltd
Cladding Manufacturer Bluescope Steel
Cladding Supplier Youngman Roofing
Cladding Contractor Metro Roofing



<https://www.saisc.co.za/project/no-1-silo-bridge/>

OMNIA NITROPHOSPHATE PLANT (PAGE 32)

WINNER

Nominator. Project Manager, Steelwork Contractor and Steel Erector SE Steel Fabrication (Pty) Ltd
Client / Developer and Main Contractor Omnia Fertilizer a division of Omnia Group (Pty) Ltd
Structural Engineer, Engineer and Project Manager Omnia Group (Pty) Ltd – Group Technical Projects
Cladding Supplier and Contractor M.R.G
Corrosion Protection (paintwork contractors) Dram Trading and Rand Sandblasting Projects
Nomination Document KRU Detailing cc
Piping Contractor Goss & Balfe



<https://www.saisc.co.za/project/omnia-nitro-phosphate-plant/>

OTTO VOLEK

FINALIST

Nominator Safintra South Africa
Client / Developer Newlyn Group
Architect Siza Architects
Structural Engineer Kantey & Templer
Main Contractor Spearville Trading
Steelwork Contractor CADCON (Pty) Ltd
Steel Erector CADCON (Pty) Ltd
Cladding Manufacturer Safintra South Africa
Cladding Supplier Safintra South Africa
Cladding Contractor Browndeck Roofing



<https://www.saisc.co.za/project/otto-volek/>

PROJECT SISHEN MODULAR PLANT EXPANSION PROJECT

FINALIST

Nominator PBA Projects
Client / Developer Sishen Iron Ore
Structural Engineer PBA Projects
Project Manager PBA Projects
Main Contractor PBA Projects
Steelwork Contractor PBA Engineering
Steel Erector – in Cape Town PBA Engineering
Steel Erector – on site at Sishen Stefanutti Stocks
Corrosion Protection (galvanizing) Galvatech
Corrosion Protection (paintwork contractor) Galvatech



<https://www.saisc.co.za/project/sishen-modular-plant-expansion-project/>

PROJECT STARZMANN

FINALIST

Nominator Young Architecture
Client / Developer Ingo Bruggemann & Katrin Starzmann
Architect Young Architecture
Structural Engineer ADA Consulting Engineers
Main Contractor Team Austin
Steelwork Contractor Abelia Metal cc
Steel Erector Abelia Metal cc
Cladding Contractor Team Austin



<https://www.saisc.co.za/project/project-starzmann/>

PROTEA GLEN SECONDARY SCHOOL 2 (PAGE 22)

WINNER

Client / Developer GDE
Architect Local Studio
Structural Engineer The Structural Workshop
Engineer Luleka Consulting Engineers
Quantity Surveyor Diva Sync
Project Manager Proplan
Main Contractor Abacus Space Solutions
Steelwork Contractor Emkay
Steel Erector and Cladding Contractor SMCAfrica
Cladding Manufacturer and Supplier Marley



<https://www.saisc.co.za/project/protea-glen-secondary-school-2/>

RAINCOAT OFFICE BUILDING

Nominator Clotan Building Systems
Client / Developer Raincoat Roofing Systems Ltd Ghana
Architect David Bass Architects
Structural Engineer Clotan Building Systems
Engineer Clotan Building Systems
Structural Detailer Steelinx Cape Town
Quantity Surveyor Clotan Building Systems
Project Manager Clotan Building Systems



<https://www.saisc.co.za/project/raincoat-office-building-ghana/>

RAZORBILL ECO CONSTRUCT – SHELL KROONDAL

Nominator, Engineer and Cladding Contractor Razorbill
Client / Developer and Architect Aecom
Structural Engineer Donnic Engineering
Project Manager and Main Contractor Aecom
Hot-rolled Steelwork Contractor Marboe & Sons (Pty) Ltd
Hot-rolled Steel Erector Marboe & Sons (Pty) Ltd
LW Steel Contractor and Erector Razorbill
Cladding Manufacturer St Gobain / Marley / Everite
Cladding Supplier Triangle Sourcing
Cladding Supplier Global Innovations
Cladding Supplier Terraco



<https://www.saisc.co.za/project/razorbill-eco-construct-shell-kroondal/>

RFG PRODUCT DEVELOPMENT AND LABORATORY

FINALIST

Nominator Safintra South Africa
Client / Developer Rhodes Food Group
Architect and Project Architect Loudon Perry Anderson Architects
Structural Engineer and Engineers WSP
Quantity Surveyor Michael Baker & Associates
Main Contractor Power Construction
Steelwork Contractor and Steel Erector Triomf Staalwerke
Cladding Manufacturer and Supplier Safintra South Africa
Cladding Contractor Scheltema

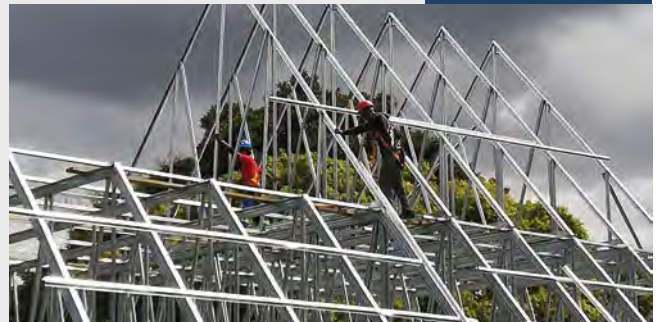


<https://www.saisc.co.za/project/rfgproduct-development-laboratory/>

RHENISH GIRLS HIGH STELLENBOSCH

FINALIST

Nominator Elegant Roofing
Client / Developer Western Cape Education Department
Architect R&L Architects
Structural Engineer Nadeson Consulting Serv
Engineer Mitek Industries SA
Quantity Surveyor, Project Manager and Main Contractor Aveng Grinaker-LTA
Steelwork Contractor and Steel Erector Elegant Roofing
Cladding Manufacturer SAFAL Group
Cladding Supplier Safintra South Africa
Cladding Contractor Elegant Roofing



<https://www.saisc.co.za/project/rhenish-girls-high-stellenbosch/>

RUNWAY BUSINESS PARK

FINALIST

Nominator Safintra South Africa
Client / Developer Growthpoint Properties
Architect Ries-Shaw Architects
Structural Engineer BPH Engineers
Main Contractor Rubro Building (Pty) Ltd
Steelwork Contractor Impact Engineering (Pty) Ltd
Steel Erector Impact Engineering (Pty) Ltd
Cladding Manufacturer Safintra South Africa
Cladding Supplier Safintra South Africa
Cladding Contractor Impact Engineering (Pty) Ltd



<https://www.saisc.co.za/project/runway-business-park/>

SA FRUIT TERMINAL

FINALIST

Nominator Safintra South Africa
Client / Developer SAFT (Pty) Ltd (Southern African Fruit Terminals (Pty) Ltd)
Architect Joe de Villiers Architects
Structural Engineer and Engineer MH&A Consulting Engineers
Quantity Surveyor Du Toit Pienaar Quantity Surveyors
Project Manager Abland
Main Contractor Isipani Construction (Pty) Ltd
Steelwork Contractor Union Steel
Cladding Manufacturer and Supplier Safintra South Africa
Cladding Contractor Cladco Projects


<https://www.saisc.co.za/project/southern-african-fruit-terminals/>

SA STEEL MILLS

FINALIST

Developer Changing Tides
Architect Changing Tides Architects
Structural Engineer Cassiem Hanse and Associates
Main Contractor Changing Tides 74
Roof Sheeter Changing Tides 74
Quantity Surveyor Changing Tides 74
Cladding Supplier Pro Roof Steel & Tube
Structural Steel Erector Changing Tides 74


<https://www.saisc.co.za/project/sa-steel-mills/>

SHELL ULTRA CITY KROONDAL (EAST AND WEST)

Nominator AECOM SA (Pty) Ltd
Client / Developer Shell Downstream South Africa
Architect, Structural Engineer and Project Manager AECOM SA (Pty) Ltd
Main Contractor Razorbill Eco-Construct
Steelwork Contractor and Steel Erector Marboe & Sons (Pty) Ltd
Cladding Manufacturer Terraco / Saint Gobain / Everite
Cladding Supplier Terraco / Saint Gobain – Triangle Sourcing
Everite – Global Innovations
Cladding Contractor Razorbill Eco-Construct


<https://www.saisc.co.za/project/shell-ultra-city-kroondal-east-and-west/>

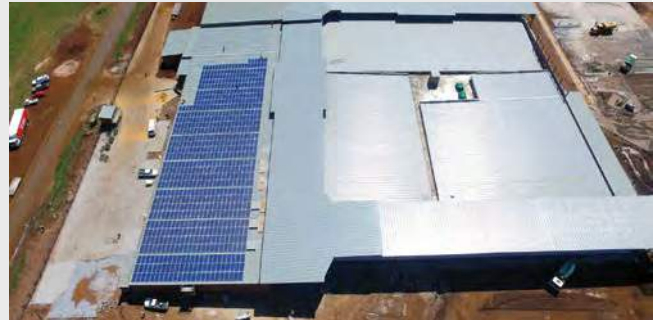
SHELL ULTRA ESTCOURT NORTH AND SOUTH

Nominator Global Roofing Solutions
Architect AECOM
Structural Engineer AECOM
Quantity Surveyor AECOM
Project Manager AECOM
Main Contractor Bartlett
Roofing and Cladding Global Roofing Solutions
Corrosion Protection (paintwork contractor) IPS Industrial Painting Services


<https://www.saisc.co.za/project/shell-ultra-escourt-north-and-south/>

SKY CITY MALL

Developer GMI Property Group
Architect Rossouw Argitekto
Structural Consultants Proficient engineering
Quantity Surveyor SM Maré & Associates
Main Contractor Central Development Projects
Roof Sheeter Rainbow Sheetters
Structural Steel Quality Steel and Fencing
Cladding Supplier Pro Roof Steel & Tube
Corrosion Protection (paintwork contractor) IPS Industrial Painting Services



<https://www.saisc.co.za/project/sky-city-mall/>

SOL PLAATJE UNIVERSITY STUDENT RESOURCE CENTRE

FINALIST

Nominator Designworkshop
Client / Developer Sol Plaatje University
Architect Designworkshop
Structural Engineer Aurecon
Quantity Surveyor KDM
Project Manager Aecom
Main Contractor M&D
Steelwork Contractor Maweale Metal Works
Steel Erector Maweale Metal Works



<https://www.saisc.co.za/project/sol-plaatje-university-student-resource-centre/>

SOMMERSET WEST VERGELEGEN MEDICLINIC PHASE 4

FINALIST

Nominator MiTek
Client / Developer MASTEC
Architect Tv3 Engineer
Engineer MiTek
Designed & Inspection MiTek
Roofing and Cladding Global Roofing Solutions



<https://www.saisc.co.za/project/somerset-west-vergelegen-mediclinic-phase-4/>

THE 1054 (PAGE 36)

WINNER

Nominator DMV Architecture
Client / Developer Symbolic Investments Propriety (Pty) Ltd
Architect DMV Architecture
Structural Engineer MEB Consulting Engineers
Main Contractor Jeremy Delport Construction
Steelwork Contractor Bisho Steel
Steel Erector Bisho Steel
Cladding Manufacturer Safintra South Africa
Cladding Supplier Clad All
Cladding Contractor Clad All



<https://www.saisc.co.za/project/the-1054/>

THE MAIN STRAIGHT OFFICE PARK BUILDING, BLOCK C

FINALIST

Nominator and Architect Boogertman and Partners (Pty) Ltd
Client / Developer RPP Developments
Structural Engineer Sutherland Engineers
Quantity Surveyor Pentad Quantity Surveyors
Project Manager CPD Project Management
Main Contractor Iguana Projects
Steelwork Contractor and Steel Erector Central Welding Works
Cladding Manufacturer and Supplier Brownbuild
Cladding Contractor Steel Roofing
Corrosion Protection (paintwork contractor) Firstclass Projects
Steel Detailer / Nomination Document KRU Detailing cc


<https://www.saisc.co.za/project/the-main-straight-office-park-building-block-c/>

THE PEECH HOTEL (PAGE 28)

WINNER

Nominator Sabintra South Africa
Client / Developer The Peech Boutique Hotel
Architect Meshworks
Structural Engineer EVH Consulting
Quantity Surveyor Viking Construction
Steelwork Contractor Jaru Design
Cladding Contractor Monro Sheetting


<https://www.saisc.co.za/project/peech-hotel/>

THE VIPER ELEVATED WOODLAND WALKWAY (PAGE 30)

COMMENDATION

Nominator and Structural Engineer Henry Fagan & Partners
Client / Developer Emily Estate (UK) Ltd
Architect Mark Thomas Architects
Quantity Surveyor RSA Bernard James & Partners
Quantity Surveyor UK Synergy
Project Manager Stonewood Design Architects
Main Contractor Beard
Steelwork Contractor RSA Prokon Services
Steelwork Contractor and Steel Erector UK MJ Patch & Co
Corrosion Protection Consultant KVB Associates
Corrosion Protection (galvanizing) Advanced Galvanising
Corrosion Protection (paintwork contractor) MRH


<https://www.saisc.co.za/project/the-viper/>

TIBANI SHOPPING CENTRE

Architect Rossouw Argitekto
Structural Consultants Proficient Engineering
Quantity Surveyor SM Maré & Associates
Main Contractor Robert Skinner Konstruksie
Roof Sheeter Rainbow Sheeters
Structural Steel Quality Steel and Fencing
Cladding Supplier Pro Roof Steel & Tube
Corrosion Protection (paintwork contractor) IPS Industrial Painting Services


<https://www.saisc.co.za/project/tibani-shopping-centre/>

TRONKON MEDCLINIC MEDIFORUM

FINALIST

Nominator Ecostrut (Pty) Ltd
Client / Developer Medclinic Medforum
Architect Graceland Architects
Structural Engineer Civilsense
Main Contractor Tronkon / Shere
Steelwork Contractor Ovita Engineering
Steel Erector and Cladding Contractor Ecostrut (Pty) Ltd
Cladding Manufacturer Marley Roofing
Cladding Supplier Trinexus Group
Roofing and Cladding Global Roofing Solutions



<https://www.saisc.co.za/project/tronkon-medclinic-mediforum/>

UKZN – SCHOOL OF ENGINEERING – DINING HALL

FINALIST

Nominator Shospec (Pty) Ltd
Architect Artek 4 Architects
Structural Engineer Martin & Associates
Engineer Martin & Associates
Main Contractor Go Plan Homes
Steelwork Contractor Shospec (Pty) Ltd
Steel Erector Shospec (Pty) Ltd
Cladding Manufacturer SHERA
Cladding Supplier CAPCO
Cladding Contractor Shospec (Pty) Ltd



<https://www.saisc.co.za/project/ukzn-school-of-engineering-dining-hall/>

ULTIMATE HELIPORT

FINALIST

Nominator and Structural Steel Detailer KRU Detailing cc
Client / Developer Ultimate Heli
Architect Liquid Spaces
Structural Engineer Fortem
Engineer C-Plan
Quantity Surveyor CDL Quantity Surveyors
Main Contractor Liviero
Steelwork Contractor and Steel Erector Central Welding Works
Cladding Manufacturer, Supplier and Contractor Pinnacle Cladding
Corrosion Protection (paintwork contractor) Dram Trading
Roofing and Cladding Global Roofing Solutions
Nomination Document Submission KRU Detailing cc



<https://www.saisc.co.za/project/ultimate-heliport/>

UNI4 EDTECH CENTRE

FINALIST

Nominator Young + Satharia (Pty) Ltd
Client / Developer Educor Property Holdings
Architect Design Workshop
Structural and Civil Engineer Young + Satharia (Pty) Ltd
Main Contractor Linear Construction (Pty) Ltd
Steelwork Contractor STS Steel Projects
Cladding Manufacturer Danjay Fabrication
Cladding Supplier Andrew Mentis (Pty) Ltd Trading As Mentis Sales
Cladding Contractor STS Steel Projects
Corrosion Protection (galvanizing) Pinetown Galvanising



<https://www.saisc.co.za/project/uni4-edtech-centre/>

VILLAGE SQUARE DURBANVILLE

Nominator, Cladding Manufacturer and Supplier Safintra South Africa

Client / Developer Sanlam Properties

Architect JLDdesign / Chameleon JV

Structural Engineer Ekcon

Quantity Surveyor MLC

Project Manager MDSA

Main Contractor Isipani Construction

Steelwork Contractor and Steel Erector Triomf Steel

Cladding Contractor Scheltema Roofing



<https://www.saisc.co.za/project/village-square-durbanville/>

WAGS WAREHOUSE

Nominator Clotan Steel

Client / Developer Fortress Property Fund

Architect ICM Architecture

Structural Engineer Sotiralis Consulting Engineers

Quantity Surveyor Quanticost Quantity Surveyors

Main Contractor Archstone Construction

Steelwork Contractor SE Steel Fabrication (Pty) Ltd

Cladding Manufacturer Clotan Steel (Pty) Ltd

Cladding Supplier Clotan Steel (Pty) Ltd

Cladding Contractor GM Roofing

Steel Detailer / Nomination Document KRU Detailing cc



FINALIST

<https://www.saisc.co.za/project/wags-warehouse/>

WE BUY CARS WAREHOUSE

Nominator Clotan Steel (Pty) Ltd

Client / Developer and Project Manager Fortress Property Fund

Architect Trilogy Architects and Interior Designers

Structural Engineer Sotiralis Consulting Engineers

Quantity Surveyor Quanticost Quantity Surveyors

Main Contractor M&T Developments

Steelwork Contractor B&T Steel

Cladding Manufacturer and Supplier Clotan Steel (Pty) Ltd

Cladding Contractor GM Roofing

Corrosion Protection (paintwork contractor) IPS Industrial Painting Services



FINALIST

<https://www.saisc.co.za/project/we-buy-cars-warehouse/>

WESTLAKE WAREHOUSE ERF 50

Nominator and Structural Steel Detailer KRU Detailing cc

Client / Developer Fortress Property Fund

Architect ICM Architectural Studio

Structural Engineer and Engineer L&S Consulting (Pty)

Project Manager Abbeydale Building and Civil (Pty) Ltd

Main Contractor Abbeydale Building and Civil (Pty) Ltd

Steelwork Contractor and Erector SE Steel Fabrication (PTY) Ltd

Cladding Manufacturer and Supplier Roofing Solutions

Cladding Contractor Roofing Solutions

Corrosion Protection (paintwork contractor) Dram Trading



FINALIST

<https://www.saisc.co.za/project/westlake-warehouse-erf-50-2/>

WISIUM SA (PTY) LTD – RELOCATION AND EXTENSION OF MIXING PLANT IN BRITS INDUSTRIAL

FINALIST

Nominator Ferro Eleganza (Pty) Ltd
Main Contractor Techmach Technology (Pty) Ltd
Steelwork Contractor Ferro Eleganza (Pty) Ltd
Steel Erector Ferro Eleganza (Pty) Ltd
Cladding Contractor Ferro Eleganza (Pty) Ltd
Corrosion Protection (paintwork contractor) Dram Industrial
Painting Contractors



<https://www.saisc.co.za/project/wisium-sa-pty-ltd-relocation-and-extension-of-mixing-plant-in-brits-industrial/>

SAISC FEATURED MEMBER

KHOMBANANI STEEL

Khombanani Steel (Pty) Ltd

Representative: Marten Spencer Tel: +27 11 975 0647 marten@tasseng.co.za

SPECIALIZING IN STRUCTURAL
STEEL DETAILING SINCE 2002

DETAILERS OF
MINING- COMMERCIAL
& ARCHITECTURAL
STRUCTURES

KRU
detailing

(011) 462 8296
www.kru.co.za

KNOWLEDGEABLE TEAM. RELIABLE EXPERTISE. UNIQUE THINKING.



ELEVATING THE INDUSTRY

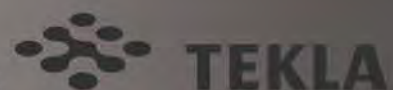
Ferro Eleganza services the industry with the construction of steel structures for Commercial buildings, Shopping Centres, Architectural Structures, and Mining Infrastructure.

With 5500m² of factory space, Ferro Eleganza has the capacity to produce from 250 tons of light structural steel to over 350 tons of

heavy structural steel per month. With state of the art CNC machines the fabrication details are received and processed directly from their in-house detailing office.

Recently completed projects:

- Airport Junction Shopping Centre Botswana - 1750 tons
- Brits Granite Factory – 450 tons
- JD Group Warehouse Rosslyn – 360 tons
- Brits Mall – 750 tons



Tel: (012) 803-8035
208 Vonkprop Street, Samcorpark, Silverton x2, 0127

HOW CAN YOU BECOME A MEMBER OF THE SAISC?

ADVANTAGES OF BECOMING A MEMBER OF THE SOUTHERN AFRICAN INSTITUTE OF STEEL CONSTRUCTION (SAISC)

- Belonging to an organisation that is highly respected both in South Africa and outside the country's borders.
- Accessing the Institute's database and meeting the right people at SAISC events and functions.
- Promoting your organisation to clients, the professions, main contractors and others in the steel industry.
- Obtaining advice on technical, contractual or business matters from the extensive and constantly growing body of knowledge and experience concentrated at the Institute.
- Keeping up to date on new developments and opportunities in the industry.
- Saving by benefitting from member discounts on publications, courses and events.

INDIVIDUALS CAN JOIN IN ONE OF TWO CATEGORIES

Professional Membership is for structural engineers, technologists, technicians, architects, quantity surveyors and project managers who are proficient in structural steel design and construction and are registered with a statutory council for the particular profession.

Associate Individual Membership is for any person who does not qualify for Professional Membership, but wants to be associated with the Institute. This includes Students.

COMPANIES CAN BECOME MEMBERS IN ANY OF THE FOLLOWING CATEGORIES

Steel Producer Membership for companies that are primary steel producers.

Steelwork Contractor Membership for fabricators and erectors of structural steelwork.

Associate Corporate Membership for companies and organisations with an interest in structural steel, including professional firms, clients of the steel construction industry, associations, companies that provide goods or services to the steel construction industry, and other companies in the broader steel industry.

Developing Membership for small, newly established steelwork contractors who need assistance.

**To request a membership application form,
or more information on membership fees,
email Tiana Ferreira - tiana@saisc.co.za**

SAISC MEMBERS**STEEL PRODUCERS****ArcelorMittal South Africa**

Representative: Gaurav Nagpal
Tel: +27 16 889 9111
Gaurav.Nagpal@arcelormittal.com
www.arcelormittal.com

Cape Gate

Representative: Martin Friedman
Tel: +27 16 980 2121
friedmnm@capegate.co.za
www.capegate.co.za

Columbus Stainless (Pty) Ltd

Representative: Lucien Matthews
Tel: +27 13 247 2805
matthews.lucien@columbus.co.za
www.columbus.co.za

Scaw South Africa (Pty) Ltd

Representative: Morgan Pillay
Tel: +27 11 620 0241
mpillay@scaw.co.za
www.scaw.co.za

UNICA Iron & Steel (Pty) Ltd

Representative: Ravin Singh
Tel: +27 12 719 9736
ravin@unica.co.za
www.unica.co.za

STEELWORK CONTRACTORS**Eastern Cape****Industrial Services Group**

Representative: Errol Thomson
Tel: (043) 707-2700
ethomson@isgeng.co.za
www.isgeng.co.za

Uitenhage Super Steel cc

Representative: Ginkel Venter
Tel: +27 41 922 8060
ginkel@uss.co.za

Gauteng**African Steel & Associated Projects**

Representative: Colin Wilson
Tel: + 263 4 621584
ops@thesteelbuildingco.co.zw
colincampbellwilson@gmail.com
www.agrstructures.co.zw

Betterect (Pty) Ltd

Representative: Nicolette Skjoldhammer
Tel: +27 11 762 5203
nicolette@betterect.co.za
www.betterect.co.za

Cadcon (Pty) Ltd

Representative: Richard Butler
Tel: +27 12 664 6140
richbutler@cadcon.co.za
www.cadcon.co.za

Central Welding Works

Representative: Stephen Horwitz
Tel: +27 12 327 1718
stephen@cwwwpta.co.za

Ferro Eleganza (Pty) Ltd

Representative: Chris Narbonese
Tel: +27 12 803 8035
admin@ferroe.co.za
www.ferroe.co.za

**Energy Fabrication (Pty) Ltd
t/a Genrec Engineering**

Representative: Mark Prince
Tel: +27 11 876 2300
mark.prince@genrec.co.za
www.genreceng.co.za

Khombanani Steel (Pty) Ltd

Representative: Marten Spencer
Tel: +27 11 975 0647
marten@tasseng.co.za

Louwill Engineering (Pty) Ltd

Representative: Juan Sliep
Tel: +27 11 818 5186
juan@louwill.co.za
www.louwill.co.za

Magnet Engineering (Pty) Ltd

Representative: Diniz Belo
Tel: +27 11 908 3500
magnetgr@global.co.za
www.magnetengineering.co.za

MPW Steel Construction (Pty) Ltd

Representative: Nic Tallarico
Tel: +27 11 450 3380
nic@mpwtalmac.co.za
www.mpwtalmac.co.za

NJW Engineering Services cc

Representative: Nick Van Deventer
Tel: +27 12 541 3931
nick@njw.co.za

SE Steel Fabrication (Pty) Ltd

Representative: David J Essey
Tel: +27 11 953 4584
sesteel@icon.co.za

Sectional Poles (Pty) Ltd

Representative: Phil M Koen
Tel: +27 12 348 8660
pkoen@sectionalpoles.co.za
www.sectionalpoles.co.za

SMEI Projects (Pty) Ltd

Representative: Sandy Pratt
Tel: +27 11 914 4101
afpratt@smei.co.za
www.smei.co.za

Steel Band Construction cc

Representative: Steven Smit
Tel: +27 11 425 4569
steelband@icon.co.za
www.steelbandconstruction.co.za

Tass Engineering (Pty) Ltd

Representative: Tim Tasioulas
Tel: +27 11 975 0647
tim@tasseng.co.za
www.tass.co.za

TMW Fabrication (Pty) Ltd

Representative: Nick Lyons
Tel: +27 82 680 4126
nick@metalworker.co.za
www.tmwfabrication.com

Trentbridge Engineering cc

Representative: David Hunter
Tel: +27 16 365 5327
trentfab@intekom.co.za

Tudor Engineering & Draughting cc

Representative: Braam Beukes
Tel: +27 11 914 5163
tudora@mweb.co.za

Viva Engineering (Pty) Ltd

Representative: Collen Gibbs
Tel: +27 11 392 3926
colleng@vivaeng.co.za
www.vivaeng.co.za

WBHO Services North

Representative: Andrew Breckenridge
Tel: +27 11 265 4000
andrewb@wbho.co.za
www.wbho.co.za

KwaZulu-Natal

Avellini Bros (Pty) Ltd
Representative: Pietro Avellini
Tel: +27 31 464 0421
ravellini@iafrica.com

DAVGO cc

Representative: Bryce Goss
Tel: +27 31 765 2994
bryce@davgo.co.za
www.davgo.co.za

Churchyard & Umpleby

Representative: Keith Ball
Tel: +27 31 701 0587
keith@candu.co.za
www.candu.co.za

Cousins Steel International (Pty) Ltd

Representative: Adam Oldfield
Tel: +27 31 312 0992
adam@cousinssteel.co.za
www.cousinssteel.co.za

Ogilvie Engineering (Pty) Ltd

Representative: Allan Olive
Tel: +27 31 736 1643
allan@ogilvieengineering.co.za

Rebcon Engineering (Pty) Ltd

Representative: Warren Butler
Tel: +27 31 705 5851
warren@rebcon.co.za
www.rebcon.co.za

SpanAfrica Steel Structures (Pty) Ltd

Representative: James Pinnell
Tel: +27 33 346 2555
james@jpspc.co.za

Steelkon Projects

Representative: Konrad Karcz
Tel: +27 82 971 5916
konrad@steelkon.co.za
www.steelkon.co.za

Mpumalanga**B & T Steel**

Representative: Bryan Wilken
Tel: +27 13 665 1914
marketing@btsteel.co.za
www.btsteel.co.za

Da Costa Construction Welding cc

Representative: Tobie Oosthuizen
Tel: +27 17 647 1130
tobie@dcconstruction.co.za

GPM Services

Representative: Wessel Venter
Tel: +27 71 697 5802/ 82 452 9306
wessel@gpms.co.za
www.gpms.co.za

Tubular Holdings (Pty) Ltd

Representative: Tony Trindade
Tel: +27 11 553 2012
tony.t@tubular.co.za
www.tubular.co.za

Steel Services and Allied Industries

Representative: Lawrence Bartlett
Tel: +27 18 788 6652/3
lawrenceb@steelservices.co.za
www.steelservices.co.za

North West**Almec Manufacturing cc**

Representative: Joan Basson
Tel: +27 18 469 3202
joanalmecc@gds.co.za
www.almecmanufacturing.co.za

Tetra Con (Pty) Ltd

Representative: Kappie Kleinsmit
Tel: +27 14 538 0050
kappie@tetracon.co.za

Northern Cape**Rufco Construction (Pty) Ltd**

Representative: Lorry Ruffini
Tel: +27 53 313 1651
lorry@rufco.co.za
www.rufco.co.za

Western Cape**Inenzo Water (Pty) Ltd**

Representative: Jan Cloete
Tel: +27 21 948 6208
admin@inenzo.com
www.inenzo.com

Mazor Steel cc

Representative: Shlomo Mazor
Tel: +27 21 556 1555
judy@mazor.co.za
www.mazor.co.za

Prokon Services (Pty) Ltd

Representative: Martin Lotz
Tel: +27 21 905 4448
martin@prokonservices.co.za
www.prokonservices.co.za

Union Structural Engineering Works

Representative: Mike N Papanicolaou
Tel: +27 21 534 2251
michael@unionsteel.co.za
www.unionsteel.co.za

STEEL MERCHANTS & SERVICE CENTRES**Gauteng****Allied Steelrode (Pty) Ltd**

Representative: Justin Dax Cloete
Tel: +27 10 216 0189
justinc@alliedsteelrode.co.za
www.alliedsteelrode.com

Aveng Trident Steel**A division of Aveng Africa (Pty) Ltd**

Representative: Eileen Pretorius
Tel: +27 11 861 7102
eileen.pretorius@trident.co.za
www.avengtridentsteel.co.za

BSi Steel (Pty) Ltd

Representative: Keith Whiting
Tel: +27 11 861 7603
keith.whiting@bsisteel.com
www.bsisteel.com

Macsteel Service Centres SA (Pty) Ltd

Representative: Granville Rolfe
Tel: +27 11 871 4677
granville.rolfe@mactrading.co.za
www.macsteel.co.za

Macsteel VRN

Representative: Jimmy Muir
Tel: +27 11 861 5200
jimmy.muir@vrn.co.za
www.vrnsteel.co.za

NJR Steel Services (Pty) Ltd

Representative: Greg Mollett
Tel: +27 11 477 5515
gmollett@njrsteel.co.za
www.njrsteel.co.za

Stewarts & Lloyds Holdings (Pty) Ltd

Representative: Mandy de Oliveira
Tel: +27 11 553 8500
mandyd@sltrading.co.za
www.stewartsandlloyds.co.za

TW Profile Services (Pty) Ltd

Representative: Leon Coetzee
Tel: +27 894 3031
leonc@twprofile.co.za
www.twprofile.co.za

KwaZulu-Natal**Macsteel Trading Durban**

Representative: Marcus Nel
Tel: +27 31 913 2600
marcus.nel@mactrading.co.za

Western Cape**Macsteel Trading Cape Town**

Representative: Maria Francis
Tel: +27 21 950 5506
maria.francis@mactrading.co.za

STEEL PRODUCT MANUFACTURERS**Amanzi Storage Solutions (Pty) Ltd**

Representative: Duane Ramos
Tel: +27 11 493 1197
duane@amanziss.co.za

Augusta Steel (Pty) Ltd

Representative: Nico Erasmus
Tel: +27 11 914 4628
nico@augustasteel.co.za
www.augustasteel.co.za

COLVIC Marketing & Engineering (Pty) Ltd

Representative: Vic Hall
Tel: +27 11 457 8500
vich@colvic.co.za
www.colvic.co.za

George Stott & Co (Pty) Ltd

Representative: Johan Venter
Tel: +27 11 474 9150
johanv@geostott.co.za
www.geostott.co.za

Mentis Sales

Representative: Dean Weil
Tel: +27 11 255 3200
deanw@mentis.co.za
www.mentis.co.za

Robor (Pty) Ltd

Representative: Ann Julle
Tel: +27 11 971 2102
annj@robor.co.za
www.robor.co.za

SBS Corporate Services (Pty) Ltd

Representative: Hlengiwe Matiwane
Tel: +27 31 716 1820
hlengiwe@sbstanks.co.za
www.sbstanks.co.za

Swasap (Pty) Ltd

Representative: Derek Anderson
Tel: +27 11 873 6666
derek@swasap.com
www.swasap.co.za

Urethane Moulded Products (Pty) Ltd

Representative: Trevor Carolin
Tel: +27 11 452 1000
trevor@ump.co.za
www.ump.co.za

Vital Engineering & Angus Mcleod (Pty) Ltd

Representative: Glen Pringle
Tel: +27 11 898 8500
glen@gratings.co.za
www.gratings.co.za

Void Pro Manufacturing (Pty) Ltd

Representative: Andries Botha
Tel: 0861 106 275
info@voidcon.co.za
www.voidcon.co.za

CORROSION & FIRE PROTECTION TO STEEL**ARMCO Superlite (Pty) Ltd**

Representative: Anthonie de Wit
Tel: +27 11 974 8511
dewit.anthonie@armco.co.za
www.armco.co.za

Corrosion Institute of Southern Africa

Representative: Donovan Slade
Tel: +27 10 224 0761
president@corrisa.org.za
www.corrisa.org.za

Hot Dip Galvanizers Association of SA

Representative: Robin Clarke
Tel: +27 11 456 7960
hdgasa@icon.co.za
www.hdgasa.org.za

CRANES**RGM Cranes**

Representative: Ian O'Hara
Tel: +27 11 422 3690
ian@rgm.co.za
www.rgmcranes.com

CONSULTING ENGINEERS, DETAILERS & PROJECT MANAGERS**Gauteng****AECOM SA (Pty) Ltd**

Representative: Lara Lombard
Tel: +27 12 421 3832
Lara.Lombard@aecom.com
www.aecom.co.za

Anglo Operations Ltd

Representative: Kurt Waelbers
Tel: +27 11 638 9111
kurt.waelbers@angloamerican.com
www.angloamerican.com

Aurecon South Africa (Pty) Ltd

Representative: OJ Ajayi
Tel: +27 11 214 4500
OJ.Ajayi@aurecongroup.com
www.aurecongroup.com

Arup (Pty) Ltd

Representative: Kimon Comninos
Tel: +27 11 218 7739
kimon.comninos@arup.com
www.arup.com

Bigen Africa Services (Pty) Ltd

Representative: Daneel Strydom
Tel: +27 12 842 8840
daneel.strydom@bigenafrica.com
www.bigenafrica.com

CND Structural Services (Pty) Ltd

Representative: Claudio Correia
Tel: +27 82 353 3818
claudio@cnd-ss.com
www.cnd-ss.com

Clearspan Structures (Pty) Ltd

Representative: Jeff Montjoie
Tel: +27 11 823 2402
jmo@clearspan.co.za
www.clearspan.co.za

Consultaurie Design (Pty) Ltd

Representative: Mark Phillips
Tel: +27 11 234 6787
mark@ctauri.com

DRA Projects (Pty) Ltd

Representative: Ryan Males
Tel: +27 11 086-2325
ryan.males@draglobal.com
www.draglobal.com

EDS Engineering Design Services (Pty) Ltd

Representative: Hergen Fekken
Tel: +27 12 991 1205
hergen@edseng.co.za
www.edseng.co.za

Fluor South Africa (Pty) Ltd

Representative: Colin Morris
Tel: +27 11 519 6000
colin.morris@fluor.com
www.fluor.com

Hatch Africa (Pty) Ltd

Representative: Morne Fourie
Tel: +27 11 239 5422
morne.fourie@hatch.com
www.hatch.com

Imbabala Contractors

Representative: Michael Mamotte
Tel: +27 11 902 2952
mikem@imbacontra.co.za
www.imbacontra.co.za

International Drafting Services (Pty) Ltd

Representative: Frans Vivier
Tel: +27 11 472 4466
frans@idrafting.co.za

KRU Detailing cc

Representative: Johann Strauss
Tel: +27 11 462 8296
johann@kru.co.za
www.steeldetailing.co.za

Malani Padayachee and Associates (Pty) Ltd

(shortened version MPA (Pty) Ltd)
Representative: Malani Padayachee-Saman
Tel: +27 11 781 9710
admin@mpaconsulting.co.za
www.mpaconsulting.co.za

NAKO LBE

Representative: Nolan Pillay
Tel: +27 12 665 3102
nolan.pillay@nakogroup.com
www.nakogroup.com

Roytec Global (Pty) Ltd

Representative: Dewalt Sadie
Tel: +27 11 608 0000
Dewalt.Sadie@roytec.co.za
www.roytec.co.za

Tenova TAKRAF Africa

Representative: Leon Olwage
Tel: +27 11 201 2542
leon.olwage@tenova.com
www.takraf.com

VLE Draughting (Pty) Ltd

Representative: Benandi Page
Tel: +27 65 876 8840
benandi@vledraughting.co.za
www.vledraughting.co.za

WorleyParsons RSA

Representative: Ian Robinson
Tel: +27 11 218 3000
ian.robinson@worleyparsons.com
www.worleyparsons.com

WSP Group Africa (Pty) Ltd

Representative: John Truter
Tel: +27 11 300 6000
john.truter@wspgroup.co.za
www.wspgroup.co.za

KwaZulu-Natal**DMV Richards Bay (Pty) Ltd**

Representative: Le Roux Fourie
Tel: +27 35 789 1828
admin@dmvrb.co.za

Gavin R Brown & Associates

Representative: Gavin R Brown
Tel: +27 31 202 5703
gavbrown@global.co.za
www.gavbrown.co.za

Inqubeko Consulting Engineers

Representative: Freek Pretorius
Tel: +27 35 772 1592
freek@inqubeko.co.za
www.inqubeko.co.za

SDN Drawing Services cc

Representative: Sagren Govender
Tel: +27 31 464 8186
sdndrawings@gmail.com

Young & Satharia Structural & Civil Engineering

Representative: Rob Young
Tel: +27 31 207 7252
rob@yands.co.za
www.yands.co.za

Mpumalanga**Bulkcon cc**

Representative: Desmond Enslin
Tel: +27 17 811 7520
desmond@bulkcon.co.za
www.bulkcon.co.za

Ijubane Projects (Pty) Ltd

Representative: Willie Greyling
Tel: +27 13 243 4390
willie@glps.co.za
www.glps.co.za

J.A.M.S. Geological Services cc

Representative: Pieter Vermeulen
Tel: +27 17 632 2990
pieter.vermeulen130969@gmail.com

Strydom & Malan Incorporated

Representative: Pieter Strydom
Tel: +27 13 653 6340
pstry@mweb.co.za

North West**Greyhorn Engineering (Pty) Ltd**

Representative: Justin Kahari
Tel: +27 18 462 0346
justin@greyhorneng.co.za
www.greyhorneng.co.za

Western Cape**By Design Consulting Engineers**

Representative: Barend Oosthuizen
Tel: +27 83 287 1995
barend@bydesign.org.za
www.bydesign.org.za

Kantey & Templer (Pty) Ltd

Representative: Chris Von Geusau
Tel: +27 21 405 9600
chrisvg@kanteys.co.za
www.kanteys.co.za

KLS Structural (Pty) Ltd

Representative: Gerrit Steyn
Tel: +27 21 948 0900
gerrit@kls.co.za
www.kls.co.za

Mondo Cane cc

Representative: Rob Chalmers
Tel: +27 21 852 2447
rob@mondocane.co.za
www.mondocane.co.za

SMEC South Africa (Pty) Ltd

Representative: John Anderson
Tel: +27 21 417 2900
john.anderson@smec.com
www.smec.com

International**Walsh Draughting Services**

Representative: Donal Walsh
Tel: 00 353 57 8624913
walshds@eircom.net
www.walshds.ie

CIVIL ENGR CONTRACTORS**Maccaferri SA (Pty) Ltd**

Representative: Adriano Gilli
Tel: 087 742 2710
Adriano.gilli@maccaferri.co.za
www.maccaferri.co.za

SUPPLIERS OF GOODS AND SERVICES TO THE INDUSTRY**C. Steinweg Bridge**

Representative: Willem Fourie
Tel: +27 11 625 3000
Willem.Fourie@za.steinweg.com

Cadex Systems SA (Pty) Ltd

Representative: John Swallow
Tel: +27 11 463 1857
johnswallow@cadexsa.com
www.cadexsa.com

Dram Industrial Painting Contractors

Representative: Martin Gossayn
Tel: +27 11 660 7594
admin@dram.co.za
www.dram.co.za

BSE Distributors cc

Representative: Elliot Marcinko
Tel: +27 11 609 4987
elliott@bsedistributors.co.za

First Cut (Pty) Ltd

Representative: Anthony Lezar
Tel: +27 11 614 1112
anthonyl@firstcut.co.za
www.firstcut.co.za

Industrial Painting Services (Pty) Ltd

Representative: Sean Bemelman
Tel: +27 11 421 0314
onsitepainting@worldonline.co.za
www.onsitepainting.co.za

Lindapter International

Representative: Louise Foster
Tel: +44 (0) 1274 521444
lfoster@lindapter.com
www.lindapter.com

Retecon (Pty) Ltd

Representative: Hans-Peter Neth
Tel: +27 11 976 8600
neth@retecon.co.za
www.retecon.co.za

SGS Metlab (Pty) Ltd

Representative: Jacoline Botha
Tel: +27 11 917 5173
jacoline.botha@sgs.com
www.metlab.co.za

Southey Holdings (Pty) Ltd

Representative: Viloshini Pillay
Tel: +27 11 579 4600
vpillay@southey.co.za
www.southeycontracting.co.za

Timrite (Pty) Ltd

Representative: Deon Kruger
Tel: +27 11 475 1600
d.kruger@timrite.co.za
www.timrite.co.za

EMERGING/ DEVELOPING**Four Tops Engineering Service cc**

Representative: Essau Motloun
Tel: +27 14 558 2031
essau@fourtops.co.za

ISILO Steel

Representative: Michael Perimal
Tel: +27 11 861 7612
michael.perimal@isilosteel.co.za
www.isilosteel.co.za

WEP Engineering (Pty) Ltd

Representative: Alisha Wepener
Tel: +27 11 967 1574
alisha.wep@gmail.com
www.steelstructureswep.co.za

Zamani Engineering Services cc

Representative: David Nkosi
Tel: + 27 13 690 1978
david@zamaniengineering.co.za

SASFA MEMBERS**MAJOR MATERIAL SUPPLIERS****ArcelorMittal South Africa**

Representative: Melvin Hickers
Tel: +27 16 889 4046
Melvin.hickers@arcelormittal.com
www.arcelormittal.com

Marley Building Systems

Representative: Garry Powell
Tel: +27 11 389 4500
garry.powell@etexgroup.com

OTHER MATERIAL AND COMPONENT SUPPLIERS**Avax SA 407 cc t/a Steel Cliscoes, Doorframes and Roofing**

Representative: Jerred Micholson
Tel: +27 31 705 2411
jerred-izinga@avaxwd.co.za
https://izinga-sa.wixsite.com/izinga-sa

Harvey Roofing Products

Representative: Albie Jordaan
Tel: +27 11 741 5600
albie.jordaan@macroofing.co.za
www.harveyroofingproducts.co.za

Kare Industrial Suppliers

Representative: Reitze Hylkema
Tel: +27 11 941 3170
reitze@kare.co.za
www.kare.co.za

LSFB MANUFACTURERS**AV Light Steel**

Representative: Vincent Bender
Tel: +27 79 954 1374
vincent@avlightsteel.co.za
www.avlightsteel.co.za

Dezzo Roofing (Pty) Ltd

Representative: Brandon Harding
Tel: 087 057 8550
brandon@dezzoroofing.co.za
www.dezzoroofing.co.za

Impoqo Trading cc

Representative: Mpumelelo Nhlapo
Tel: +27 11 868 1132
mpumi@impoqo.co.za

Kwikspace Modular Buildings Ltd

Representative: Con de Villiers
Tel: +27 11 617 8000
condevilliers@kwikspace.co.za
www.kwikspace.co.za

MiTek Industries South Africa (Pty) Ltd

Representative: Uwe Schluter
Tel: +27 11 237 8700
marketing@mittek.co.za
www.mii.com/southafrica

Rajan Harinarain Construction (Pty) Ltd

Representative: Rajan Harinarain
Tel: +27 74 184 8881
rhconstruction1@gmail.com
www.rhconstruction1.co.za

Razorbill Properties 127 (Pty) Ltd

Representative: Vernon van der Westhuizen
Tel: +27 16 423 1749/50
vernon@razorb.co.za
www.razorb.co.za

Simmers and Jack (Pty) Ltd

Representative: Daniel Watson
Tel: +27 11 706 6552
daniel.w@simmers.co.za
www.simmers.co.za

Siteform Roofing and Framing

Representative: Johan Fourie
Tel: +27 51 451 2166
info@siteform.co.za
www.siteform.co.za

Trumod (Pty) Ltd

Representative: Peter Thompson
Tel: +27 11 363 1960
peter@trumod.co.za
www.trumod.co.za

Zambezi Roofing & Steel

Representative: David Gale
Tel: +260 211 287684/ +27 76 301 5096
david.gale@zambezi-roofing.com
www.zambezi-roofing.com

SERVICE CENTRES AND DISTRIBUTORS**Framecad**

Representative: Sello Tshotlhamajoe
Tel: +27 11 064 5759
SelloT@framecad.com
www.framecad.com

Global Specialised Systems KZN (Pty) Ltd

Representative: Thys Visagie
Tel: +27 31 468 1234
gmknzn@globaldbn.co.za
www.globalsystems.co.za

Scottsdale

Representative: Steve Cullender
Tel: +27 11 486 4195
steve.cullender@scottsdalesteelframes.com
www.scottsdalesteelframes.com

DESIGN CONSULTANTS**Bapedi Civil and Structural Consultants**

Representative: Tumi Kunutu
Tel: +27 11 326 3227
tumi@bapediconsult.co.za
www.bapediconsult.co.za

By Design Consulting Engineers

Representative: Barend Oosthuizen
Tel: +27 21 883 3280
barend@bydesign.org.za

C-Plan Structural Engineers (Pty) Ltd

Representative: Cassie Grobler
Tel: +27 11 472 4476
cassie@cplanstruc.co.za
www.cplan.co.za

Hage Projects (Pty) Ltd

Representative: Gert Visser
Tel: +27 16 933 0195
gert@hage.co.za

Hull Consulting Engineers cc

Representative: Mike Hull
Tel: +27 11 468 3447
hull@iafrica.com

Martin & Associates

Representative: Ian Upton
Tel: +27 31 266 0755
ibu@martinmw.co.za

ASSOCIATE MEMBERS**AAAMSA Group**

Representative: Hans Schefferlie
Tel: +27 11 805 5002
aaamsa@iafrica.com

ABSA Bank

Representative: Deon Brits
Tel: +27 11 350 3287
deonbr@absa.co.za

CSIR (Built Environment)

Representative: Llewellyn Van Wyk
Tel: +27 12 841 2677
lvwyk@csir.co.za
www.csir.co.za

HDGASA

Representative: Robin Clarke
Tel: +27 11 456 7960
robin@hdgasa.org.za
www.hdgasa.org.za

IZASA

Representative: Rob White
Tel: +27 83 456 4989
robwhite@icon.co.za
www.izasa.org

NASH New Zealand

Representative: Gordon Barratt
www.nashnz.org.nz

NASH Australia

Representative: Ken Watson
www.nash.asn.au

Pretoria Institute for Architecture

Representative: Maureen Van Wyk
Tel: +27 12 341 3204
admin.pia@saia.org.za
www.saia.org.za

Standard Bank

Representative: Johann Strydom
Tel: +27 11 631 5977
Johanjj.strydom@standardbank.co.za

Steel Framing Alliance (USA)

Representative: Mark Nowak
www.steel framingalliance.com

**University of Cape Town
Dept of Civil Engineering**

Representative: Sebastian Skatulla
Tel: +27 21 650 2595
sebastian.skatulla@uct.ac.za

**University of Pretoria
Faculty of Engineering**

Representative: Riaan Jansen
Tel: +27 12 420 4111
riaan.jansen@up.ac.za

**University of the Witwatersrand
School of Mechanical Engineering**

Representative: Terrance Frangakis
Tel: +27 11 717 7333
terrance.frangakis@wits.ac.za

BUILDING INDUSTRY**Ambient Contracting Services (Pty) Ltd**

Representative: Carlos Ferreira
Tel: +27 11 663 9100
acstenders@ambient.co.za
www.abecontracting.co.za

Container Consumables & Industrial Supplies

Representative: Leslie Sivasunker
Tel: +27 32 533 2266
lez@containerconsumables.co.za

Delca Systems (Pty) Ltd

Representative: Dr Mercy Mafara
Tel: +27 31 266 5900
info@delca.co.za
www.delca.co.za

Futurecon

Representative: Gerrit Burger
Tel: +27 82 826 0948
gerrit@futurecon.co.za

Group Five Housing (Pty) Ltd

Representative: Paul Thiel
Tel: +27 10 060 1555
pthiel@groupfive.co.za
www.groupfive.co.za

Halifax Projects

Representative: Marc Barnfather
Tel: +27 79 852 8572
marc@umgeniprjects.co.za

Lakeshore Trading 102 cc

Representative: Linky Delisile
Tel: +27 31 706 3695
deli@lakeshore.co.za

Ohlhorst Africa LBS (Pty) Ltd

Representative: Sergio Ferreira
Tel: +27 12 327 2411
info@ohlhorst.co.za
www.ohlhorst.co.za

Rancor

Representative: Charl van Zyl
Tel: +27 82 881 6879
charl@rancor.co.za
www.rancor.co.za

Shospec (Pty) Ltd

Representative: Bjorn Kahler
Tel: +27 33 386 0100
bjorn@shospec.co.za
www.shospec.co.za

SMC Africa

Representative: Andrew Dewar
Tel: +27 82 491 2717
andrew@smcafrica.com
www.smcafrica.com

Stag Homes cc

Representative: John Schooling
Tel: +27 21 794 0904
lindsayb@stagafrican.com
www.stagprop.com

Zamadunga Business Enterprise

Representative: Thandi Ngcobo
Tel: +27 31 701 5431
info@zamadunga.co.za

Zookie Construction and Projects

Representative: Reshoketswe Nakene
Tel: +27 12 767 8820
zookiecp@gmail.com

SAMCRA MEMBERS**ALLIED PRODUCTS****Ash & Lacy South Africa (Pty) Ltd**

Representative: Dion Marsh
Tel: +27 11 792 9283
dion.marsh@ashandlacy.com

Kare Industrial Suppliers (Pty) Ltd

Representative: Reitze Hylkema
Tel: +27 11 334 0922
reitze@kare.co.za
www.kare.co.za

Rigifoam

Representative: Lyle Jeffery
Tel: +27 11 421 0313
lyle@rigifoam.com
www.rigifoam.com

Saint Gobain Construction Products**South Africa (Pty) Ltd****Isover Division**

Representative: Bernard Asquith
Tel: +27 12 657 2800
bernard.asquith@saint-gobain.com
www.isover.co.za

CONTRACTOR**Chartwell Roofing (Pty) Ltd**

Representative: Mike Read
Tel: +27 83 625 1557
mike@chartwellroofing.co.za
www.chartwellroofing.co.za

Monro Roof Sheeting

Representative: David Monro
Tel: +27 84 606 2110
dave@monrosheeting.co.za
www.monrosheeting.co.za

Tate & Nicholson

A division of Southey Holdings (Pty) Ltd
Representative: Martin Bakker
Tel: +27 11 464 0910
mbakker@tn.co.za
www.southey.co.za

PRODUCER/ MILL**ArcelorMittal South Africa**

Representative: Jan Kotze
Tel: +27 16 889 9111
jan.kotze@arcelormittal.com
www.arcelormittal.com

SAFAL Steel (Pty) Ltd

Representative: Sally Stromnes/
Willem van Heerden
Tel: +27 11 944 6800/ 31 782 5500
sally.stromnes@safalgroup.com/
willem.vanheerden@safalgroup.com
www.safalgroup.com

PROFILER/ MANUFACTURER**Global Roofing Solutions
a Division of Consolidated Steel
Industries (Pty) Ltd**

Representative: Johan van der
Westhuizen
Tel: +27 11 898 2902
johan@globalroofs.co.za
www.global-roofing-solutions.co.za

Macsteel Roofing

Representative: Lance Comber
Tel: +27 11 878 7500
Lance.Comber@macroofing.co.za

Safintra South Africa (Pty) Ltd

Representative: Rainer Straussner
Tel: 0861 723 542
rainer.straussner@safalgroup.com
www.safintra.co.za

REPAIR AND MAINTENANCE**GCF Projects**

Representative: Dale McLeod
Tel: +27 11 855 1243
info@gcfprojects.co.za
www.gcfprojects.co.za

PROPERTY DEVELOPER**NAMRU 89 cc**

Representative: David Sauermann
Tel: +27 11 868 4105
dsauermann@albertsdal4.co.za
www.namru89.co.za

POLASA MEMBERS**Ablon Construction cc**

Representative: Mel Steyn
Tel: +27 57 352 1081
mel@ablon.co.za
www.ablon.co.za

ACTOM Electrical Products

Representative: Mike Ulyett
Tel: +27 11 878 3050
mike.ulyett@actom.co.za
www.actom.co.za

Avlock International

Representative: Tommy Holmes
Tel: +27 11 748 7000
tommy@avlock.co.za
www.avlock.co.za

BASH Electrical Contractors cc

Representative: Shane Bennett
 Tel: +27 11 494 5480
shane@bashelec.co.za
www.bashelec.co.za

Bolt Corporation

Representative: Paul O'Rourke
 Tel: +27 11 955 4480
paul@boltcorp.co.za
www.boltcorp.co.za

Carbo Ferrum (Pty) Ltd

Representative: Wayne Nash
 Tel: +27 43 555 0435
wayne@carboferrum.co.za

CIS Engineering

Representative: Christo Marais
 Tel: +27 16 422 0082
christo@cisengineering.co.za
www.cisengineering.co.za

Consolidated Power Projects

Representative: Mduduzi Mabaso
 Tel: +27 11 805 4281
Mduduzi.Mabaso@concogrp.com
www.conco.co.za

Cullin Africa

Representative: Krish Chetty
 Tel: +27 11 848 1400
krish@cullin.co.za
www.cullin.co.za

Down Low Construction & Projects 56 cc

Representative: Calvin Mutize
 Tel: +27 84 993 5599
dlc56projects@gmail.com
www.dlcgroup.co.za

EBM

Representative: Roger Martin
 Tel: +27 11 2880000
roger@ebm.co.za
www.ebm.co.za

IMAB Power

Representative: Fleming Adamson
 Tel: +27 11 814 6248
fleming.adamson@imab.co.za
www.imab.co.za

Jewll Industries (Pty) Ltd

Representative: Wilhelm van der Lingen
 Tel: (086) 153-9550
wim@jewll.co.za
www.jewll-flameproof.com

Jyoti Structures Africa

Representative: Bruno DalBianco
 Tel: +27 11 586 0100
bdalbianco@jyotiafrica.com
www.jsl.co.in

KEC International Limited

Representative: Sherwin Chetty
 Tel: +27 11 018 4000
chettysb@kecrpg.com
www.kecrpg.com

Larsen & Toubro Limited

Representative: Nick van der Mescht
 Tel: +27 11 317 9218
nickv@Intecc.com
www.Intecc.com

McWade Productions

Representative: Marc Hindle
 Tel: +27 11 316 2262
march@mcwade.co.za
www.mcwade.co.za

Metpress

Representative: Sagren Moodley
 Tel: +27 11 825 5334
sagren@metpress.co.za
www.metpress.co.za

Mkhulu Electro Distribution Projects

Representative: Zola Hlatshwayo
 Tel: +27 11 814 4169
systems@mkhulu-edp.co.za

Murray & Roberts Power & Energy

Representative: Gordon Sneddon
 Tel: +27 11 372 8585
gordon.sneddon@murrob.com
www.murrob.com

Pfisterer

Representative: Geoff Myburgh
 Tel: +27 33 397 5409
geoff.myburgh@pfisterer.co.za
www.pfisterer.co.za

Preformed Line Products

Representative: John Buyers
 Tel: +27 33 397 5800
johnb@preformedsa.co.za
www.preformedsa.co.za

SCAW South Africa (Pty) Ltd

Representative: Morgan Pillay
 Tel: +27 11 620 0241
mpillay@scaw.co.za

Siyazama Professional Management Services

Representative: Enrica Furlan
 Tel: +27 11 814 4169
info@siyazama-training.co.za

Structa Technology

Representative: Hercules Rossouw
 Tel: +27 16 362 9100
hercules@structa.co.za
www.structa.co.za

Tel-Screw Products

Representative: Ronald Teleng
 Tel: +27 11 917 9710
info@telscrew.co.za
ronnieteleng@me.com
www.telscrew.co.za

TESMEC SA

Representative: Simone Fiorini
 Tel: +27 11 397 2386
info@tesmecsa.co.za
www.tesmecsa.co.za

The Aluminium Federation of South Africa

Representative: Mark Krieg
 Tel: +27 11 455 5553
markk@afsa.org.za
www.afsa.org.za

Trans-Design

Representative: Robin Page
 Tel: +27 83 254 6598
robin@trans-design.co.za

TRM Piling (Pty) Ltd

Representative: Robert Marsden
 Tel: +27 74 310 1111
rob@trmpiling.com
www.trm.at

Tricom Structures - A subsidiary of Robor

Representative: Sam van Aswegen
 Tel: (011) 971 2013
samv@robor.co.za
www.tricom1.co.za

ASTPM MEMBERS**Augusta Steel (Pty) Ltd**

Representative: Paul Bowman/ Nico Erasmus
 Tel: +27 11 914 4628
paulb@augustasteel.co.za
www.augustasteel.co.za

Aveng Trident Steel Tube Division

Representative: Peter Curr
 Tel: +27 11 389 8752
peter.curr@trident.co.za
www.avengsteel.com

Barnes Tubing Industries (Pty) Ltd

Representative: Andy Smith
 Tel: +27 11 923 7340
andy@barnestubing.co.za
www.barnestubing.co.za

Hall Longmore (Pty) Ltd

Representative: Kenny Van Rooyen
 Tel: +27 11 874 7300
kenny.vanrooyen@hall-longmore.co.za
www.hall-longmore.co.za

Honingcraft (Pty) Ltd

Representative: Gerhard Hauptfleisch
 Tel: +27 11 824 5320
gerhard@honingcraft.co.za
www.honingcraft.co.za

LB Pipes (Pty) Ltd

Representative: Gerald Blackburn
Tel: +27 21 386 1923
gblackburn@groupfivepipe.co.za
www.g5p.co.za

Macsteel Tube and Pipe (Pty) Ltd

Representative: Franco Mordini
Tel: +27 11 897 2100
franco.mordini@macsteel.co.za
www.macsteel.co.za

New Concept Mining

Representative: Charles Hart/
Morne Smuts
Tel: +27 11 494 6000
charlesh@ncm.co.za
www.ncm.co.za

Pro Roof Steel Merchants (Pty) Ltd

Representative: Peter Potgieter
Tel: +27 16 450 5800
peter@prorooft.co.za
www.prorooft.co.za

STEASA MEMBERS

Arcelor Mittal South Africa

Representative: Hannes Basson
Tel: +27 16 889 3419
hannes.basson@arcelormittal.com
www.arcelormittalsa.com

Augusta Steel (Pty) Ltd

Representative: Paul Bowman/
Nico Erasmus
Tel: +27 11 914 4628
paulb@augustasteel.co.za
www.augustasteel.co.za

Aveng Trident Steel

Tube Division

Representative: Peter Curr
Tel: +27 11 389 8752
peter.curr@trident.co.za
www.avengsteel.com

Barnes Tubing Industries (Pty) Ltd

Representative: Andy Smith
Tel: +27 11 923 7340
andy@barnestubing.co.za
www.barnestubing.co.za

Connect-It

Representative: Leon Malan
Tel: +2712 004 0774
leon@connect-it.cc
www.connect-it.cc

Garsin Engineering

Representative: Walter Novelli
Tel: +27 11 828 9732
walter@garsin.co.za
www.garsin.co.za

Hall Longmore (Pty) Ltd

Representative: Kenny Van Rooyen
Tel: +27 11 874 7300
kenny.vanrooyen@hall-longmore.co.za
www.hall-longmore.co.za

Honingcraft (Pty) Ltd

Representative: Gerhard Hauptfleisch
Tel: +27 11 824 5320
gerhard@honingcraft.co.za
www.honingcraft.co.za

LB Pipes (Pty) Ltd

Representative: Gerald Blackburn
Tel: +27 21 386 1923
gblackburn@groupfivepipe.co.za
www.g5p.co.za

New Concept Mining

Representative: Charles Hart/
Morne Smuts
Tel: +27 11 494 6000
charlesh@ncm.co.za
www.ncm.co.za

Pro Roof Steel Merchants (Pty) Ltd

Representative: Peter Potgieter
Tel: +27 16 450 5800
peter@prorooft.co.za
www.prorooft.co.za



MACSTEEL



• Architectural • Commercial • Industrial • Extraordinary • Award Winning

**Whatever your design needs...
we've got the solution!**

Tel: 011 871 4600

Cnr Simon Bekker and Crompton Rd, Germiston South
email: design@mactrading.co.za or axel.kayoka@mactrading.co.za



**TRADING
CELLULAR BEAMS**

MACSTEEL Africa's leading steel supplier



Total Workflow Optimization at Your Fingertips

TEKLA SOFTWARE THE FOR STEEL INDUSTRY

Thanks to Tekla BIM software, more profitable projects are now within your reach. The office, fabrication and site teams all benefit from the detailed, constructible model. The Tekla model provides everything needed to coordinate design, optimize and automate fabrication and plan site operations for an efficient workflow preventing costly errors.

Learn more at: www.tekla.com/steel



TRULY CONSTRUCTIBLE.



Cadex SA
Tekla Structures Partner

info@CadexSA.com www.CadexSA.com